

SOIL VOLUME NUMBER	Location (City ROW, private property)	Soil Area (m <sup>2</sup> )	Soil Depth(m <sup>3</sup> )	Soil Volume (m <sup>3</sup> )	Tree Quantity	Soil Volume per tree (m <sup>3</sup> )	Irrigation provided (Yes/No)
1	Private	374.65	0.9	337.185	12	28.10	Yes
2	Private	668.99	0.9	602.091	10	60.21	Yes
3	Private	626.97	0.9	564.273	9	62.70	Yes
4	Private	464.86	0.9	418.374	13	32.18	Yes
5	Private	44.13	0.9	39.717	2	19.86	Yes
6	Private	65.18	0.9	58.662	1	58.66	Yes
7	Private	36.7	0.9	33.03	1	33.03	Yes
8	Private	29.33	0.9	26.397	1	26.40	Yes
9	Private	120.26	0.9	108.234	1	108.23	Yes
10	Private	771.12	0.9	694.008	6	115.67	Yes
11	Private	83.83	0.9	75.447	1	75.45	Yes
Totals				2957.418			Yes

\* Soil depth excludes drainage layer  
SOIL VOLUME LIST

**GENERAL NOTES:**  
**MAINTENANCE and ACCEPTANCE:**  
• ALL PLANT MATERIAL SHALL BE MAINTAINED BY THE CONTRACTOR IMMEDIATELY AFTER ANY PLANTING HAS BEEN COMPLETED AND SHALL CONTINUE UNTIL THE DATE OF FINAL ACCEPTANCE.  
• ALL PLANTING SHALL INCLUDE ALL MEASURES TO PROTECT AND MAINTAIN ALL PLANTS IN AN ACCEPTABLE MANNER AND HEALTHY GROWING CONDITION INCLUDING CULTIVATING AND WEEDING, WATERING WHEN REQUIRED, PRUNING AND MAINTENANCE OF ALL ACCESSORIES.  
• AT TIME OF INSPECTION FOR INITIAL & FINAL ACCEPTANCE ALL PLANTING BEDS AND TREE PITS SHALL BE FRESHLY CULTIVATED, FREE OF WEEDS, LEAVES, BROKEN BRANCHES AND RUBBER AND SHALL BE IN A NEAT AND TIDY CONDITION.  
• ALL PLANT MATERIAL TO BE GUARANTEED FOR A PERIOD OF 2 (TWO) YEARS FROM THE DATE OF LOCAL AUTHORITY UNLESS OTHERWISE NOTED.  
• MAINTAIN PLANTING BEDS AND TREE PITS FREE OF DEBRIS THROUGHOUT THE GUARANTEE PERIOD.  
• THE DEVELOPER SHALL REGULARLY REMOVE DEBRIS FROM THE WETLAND UNTIL THE COMPLETION OF ALL BUILDING CONSTRUCTION WITHIN THE DEVELOPMENT.  
**UTILITIES:**  
• APPLICANT IS RESPONSIBLE FOR OBTAINING NECESSARY APPROVAL FROM THE UTILITY COMPANIES FOR WORKS WITHIN THE MUNICIPAL BOUNDARY.  
• ALL UTILITIES WITHIN THE BOUNDARIES MUST BE LOCATED PRIOR TO COMMENCING CONSTRUCTION WITHIN THE BOUNDARY.

**RODENT PROTECTION:**  
• THE CONTRACTOR SHALL BE RESPONSIBLE FOR THE PROTECTION OF ALL TREES AND SHRUBS FROM RODENT INJURY FOR THE DURATION OF THE GUARANTEED PERIOD.  
• PROTECTIVE WIRE MESH GUARDS SHALL BE EMPLOYED AROUND ALL DECIDUOUS TREES. GUARDS SHALL BE INSTALLED PRIOR TO THE APPLICATION OF MULCH AND SHOULD BE PLACED A MINIMUM OF 50mm OUT FROM THE TREE TRUNK ON ALL SIDES. SUFFICIENT MESH SHOULD BE CUT TO COMPLETE THIS CIRCUMFERENCE AS WELL AS TO PROVIDE A MINIMUM OF 25mm OVERLAP.  
• THE WIRE MESH GUARD MUST BE GALVANIZED STEEL 12mm SQUARE MESH, 19 GAUGE AND SUPPLIED IN 600mm ROLLS. THE WIRE MESH CAN BE FASTENED WITH ANY ACCEPTABLE GALVANIZED WIRE TIE. ALL SHRUBS AND CONIFEROUS TREES SHALL HAVE AN APPLICATION OF "SHOOT OR APPROVED EQUIVALENT RODENT FORMULA" TO BE APPLIED AT THE END OF OCTOBER. FOLLOW MANUFACTURER'S DIRECTIONS FOR APPLICATION.  
**SODDING:**  
• PREPARE A MINIMUM 100mm DEPTH OF TOPSOIL WITH A 50:40:10 COMMERICAL FERTILIZER AT 7.3kg/100sqm, AND SUPER PHOSPHATE AT 3kg/100sqm. ALL PROPORTIONS SHOULD BE SUBJECT TO ADJUSTMENT DEPENDING ON TOPSOIL ANALYSIS.  
• LAY NO. 1 NURSERY SOD ON ALL AREAS OF THE PROJECT NOT COVERED BY BUILDING OR PAVING. IMMEDIATELY AFTER INSTALLATION, SOD MUST BE WATERED AND ROLLED.

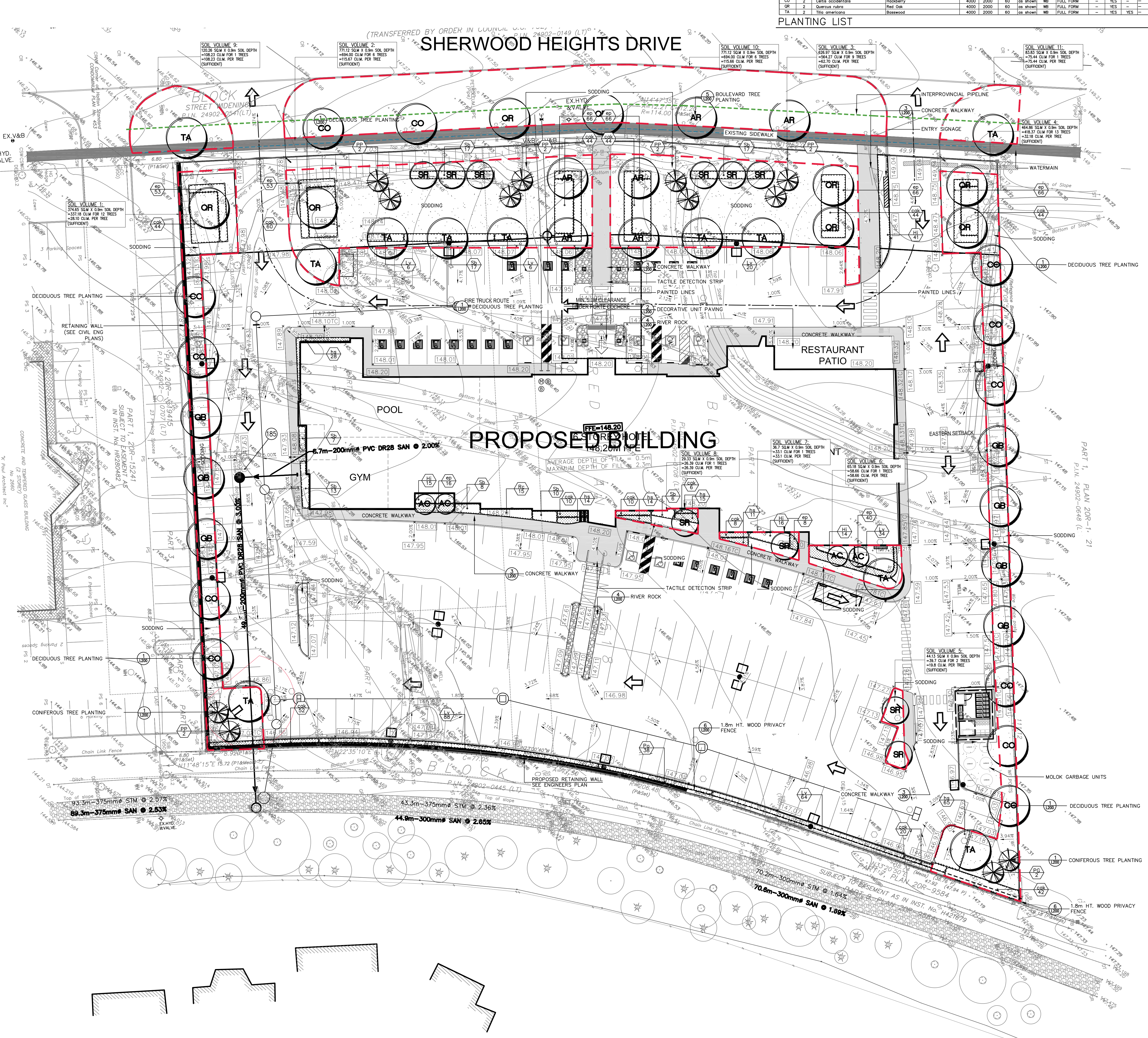
**TOPSOIL:**  
• USE EVENLY MIXED TOPSOIL OF FERTILE, FRABLE NATURAL LOAM CONTAINING NOT LESS THAN 4% ORGANIC MATTER FOR SAND LOAMS AND 2% MINIMUM ORGANIC MATTER FOR SAND LOAMS WITH AN ACIDITY RANGE OF 5.5 TO 7.5 pH.  
• ALL TOPSOIL SHOULD BE FREE OF SUBSOLS, CLAY, STONES, ROOTS, EXCESS WATER, FROST AND OTHER EXTRANEOUS MATTER.  
**TREE LOCATION:**  
• NO TREES SHALL BE PLANTED UNDER OVERHEAD WIRES OR OVER UNDERGROUND SERVICES.  
• TREES ARE NOT TO BE PLANTED LESS THAN 1M FROM CURBS, UNDERGROUND UTILITIES, SIDEWALKS AND DRIVEWAYS.  
• 2M FROM FIRE HYDRANTS AND TRANSFORMERS, AND 4m FROM LIGHT STANDARDS.  
• THE CONTRACTOR IS TO STAKE OUT LOCATIONS OF TREE PITS. THIS STAKE OUT IS TO BE INSPECTED BEFORE THE EXCAVATION OF ANY TREE PITS.  
• BEFORE THIS STAKE OUT, THE CONTRACTOR IS TO REQUEST A STAKE OUT ALL UNDERGROUND SERVICES.  
• THE LANDSCAPE ARCHITECT AND THE MUNICIPALITY MAY, AT THEIR DISCRETION REDISTRIBUTE TREE LOCATIONS, PRIOR TO PLANTING IN ORDER TO MINIMIZE CONFLICTS WITH UTILITIES, DRIVEWAYS AND INTERSECTION VISIBILITY.

**PLANTING:**  
(UNLESS OTHERWISE SPECIFIED)  
• PREPARE PLANTING SOIL BY EVENLY MIXING FOUR PARTS SAND, TOPSOIL, ONE PART ORGANIC SOIL, ADDITIVE WITH 500g BONE MEAL AND 750g COMMERCIAL FERTILIZER PER CUBIC METER. THE RESULTING MIXTURE IS SUBJECT TO ADJUSTMENT ON BASIS OF TOPSOIL ANALYSIS REPORT.  
• PLANTING DETAILS:  
• PROVIDE ALL SHRUBS AND TREES ACCORDING TO THE GUIDE SPECIFICATIONS FOR NURSERY STOCK OF THE CANADIAN NURSERY TRADE ASSOCIATION WITH REGARD TO QUALITY AND GRADING AND SIZED AS PER PLANT SPECIFICATIONS.  
• SPRAY ALL PLANTINGS IN LEAF WITH ANTI-DESICCANT. PROMOTE TREES WITH STAKES.  
• PLANTS ARE TO BE NO. 1 NURSERY GROWN, UNDER PROPER CULTURAL PRACTICES IN PARTICULAR WITH RESPECT TO AMPLE SPACING, PEST AND DISEASE CONTROL, AND BRANCH AND ROOT PRUNING.  
• TREES ARE TO HAVE STURDY, STRAIGHT TRUNKS.  
• TREES SHALL BE WELL BRANCHED AND BALANCED WITH A STRONG CENTRAL LEADER.  
• DECIDUOUS SHRUBS, TREES SHALL BE FREE OF BEHAVIOUR THAT IS UNDESIRABLE TO THE GROUND.  
• ALL SHRUBS ARE TO BE PLANTED IN CONTIGUOUS BEDS.  
• DO NOT SOD BETWEEN PLANTS. EXCAVATE ENTIRE AREA OF SHRUB BED UNIFORM TO SPECIFIED DEPTH AND FILL WITH SPECIFIED PLANTING SOIL.

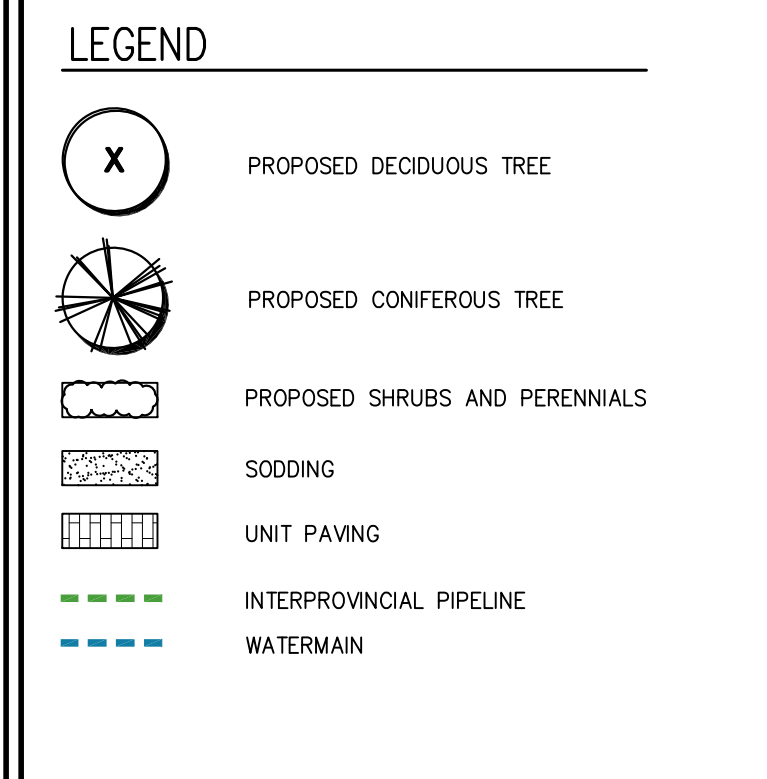
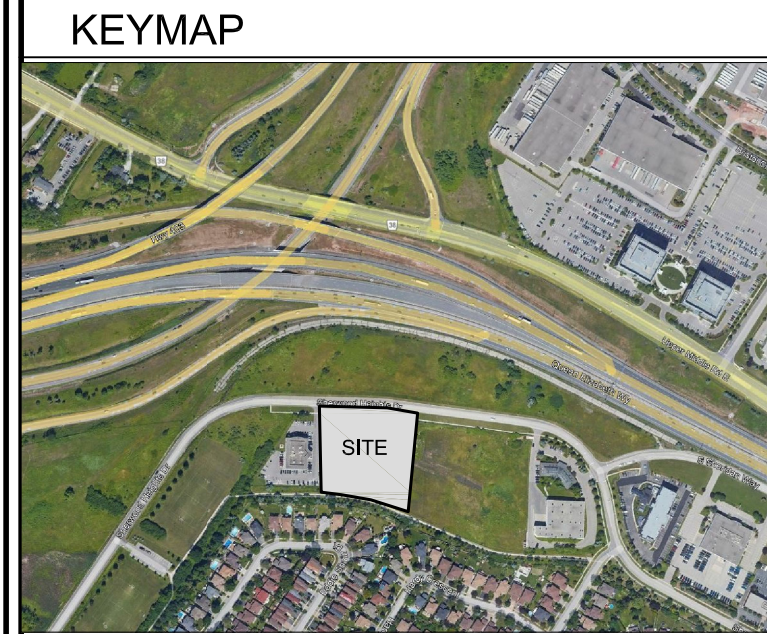
**UNIT PAVING:**  
• PAVERS SHALL BE PRECAST CONCRETE UNIT PAVERS WITH MIN. 58.85 M.P.A. (8000 P.S.I.) COMPRESSIVE STRENGTH AND A WATER ABSORPTION NOT EXCEEDING 0.8% AND A FRICTION-TWAIN RESISTANCE EQUAL TO C.S.A.-A683 (1997).  
• SETTING BED SHALL CONSIST OF SHARP, CLEAN, GROUPED STONE OR ROCK.  
• CONCRETE SAND OR APPROVED LIMESTONE SCREENINGS. SAND FOR JOINTS SHALL BE A CLEAN, NATURAL GRAVEL.  
• INSTALL GRANULAR BASE AND COMPACT TO A MINIMUM 88% STANDARD PROCTOR DENSITY UNTIL THE MIN. SPECIFIED DEPTH AS DETAILED, HAS BEEN THROUGHOUT.  
• MAINTAIN JOINTS UNIFORM AND CLOSELY BUTTED.  
• WHERE NECESSARY, SAW CUT PAVERS TO PRODUCE A SHARP, VERTICAL CUT WITHOUT DAMAGED EDGES, AND TO FIT ACCURATELY.  
• AFTER COMPLETION OF INSTALLATION, COMPACT PAVING BY MEANS OF A VIBRATING PLATE TAMPER.  
• FILL JOINTS WITH FINE SAND, BY BRUSHING AND SWEEPING, JOINT PAVING WITH FINE WATER SPRAY.

**PLANTING LIST**

DECIDUOUS TREES	EVY	QUANT	BOTANICAL NAME	COMMON NAME	HEIGHT	SPREAD	CALIPER	SPACING	COND.	REMARKS	DT	ON	PO	CAUTION
AR	4	Amelanchier canadensis	Honeyberry	Red Maple	2000	1500	50	10m	WB	FULL FORM	-	YES	YES	-
AR	4	Asar rubrum	Red Maple	Red Maple	4000	2000	60	10m	WB	FULL FORM	-	YES	YES	-
CO	10	Carya occidentalis	Hickory	White Spruce	4000	2000	60	10m	WB	FULL FORM	-	YES	YES	-
GB	10	Grassia nitida	Grassia nitida	Grassia nitida	4000	2000	60	10m	WB	FULL FORM	-	YES	YES	-
OR	6	Quercus rubra	Red Oak	Red Oak	4000	2000	60	10m	WB	FULL FORM	-	YES	YES	-
SR	10	Syringa reticulata	Japanese Tree Lilac	Japanese Tree Lilac	4000	2000	60	10m	WB	FULL FORM	-	YES	YES	-
TA	9	Tilia americana	Basswood	Basswood	4000	2000	60	10m	WB	FULL FORM	-	YES	YES	-

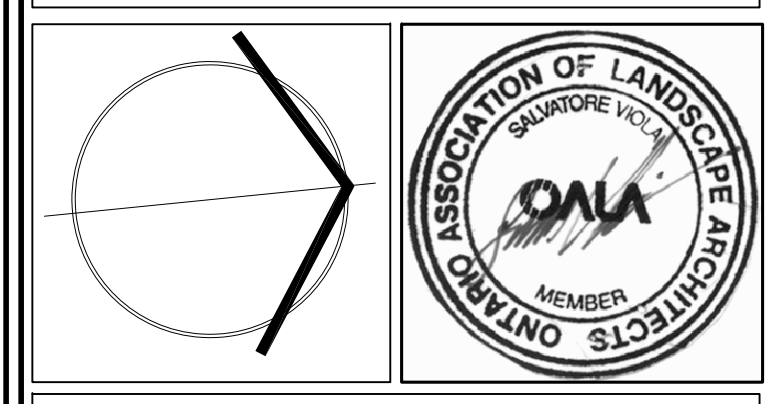


**GENERAL NOTES**  
• VERIFY ALL DIMENSIONS.  
• DO NOT SCALE DRAWINGS.  
• REPORT ANY DISCREPANCIES, DISCOVERED ERRORS, OR OMISSIONS TO THE LANDSCAPE ARCHITECT BEFORE PROCEEDING.  
• IT IS ADVISED THAT CONTRACTORS CONTACT THE LANDSCAPE ARCHITECT PRIOR TO CONSTRUCTION TO ENSURE THE USE OF THE LATEST REVISED DRAWINGS.  
• DRAWINGS AND SPECIFICATIONS ARE THE PROPERTY OF THE LANDSCAPE ARCHITECT.



No.	DATE	REVISION	BY
9.	OCT 31 2024	REVISED AS PER LATEST CIVIL PLANS	S.V.
8.	MAY 15 2024	ISSUED FOR REVIEW	S.V.
7.	MAR 25 2024	REVISED AS PER NEW SITEPLAN	S.V.
6.	NOV 01 2023	ISSUED FOR REVIEW	S.V.
5.	OCT 30 2023	REVISED AS PER NEW SITEPLAN	S.V.
4.	OCT 04 2023	ISSUED FOR REVIEW	S.V.
3.	AUG 21 2023	REVISED AS PER NEW SITEPLAN	S.V.
2.	JULY 31 2023	ISSUED FOR REVIEW	S.V.
1.	JULY 26 2023	ISSUED FOR REVIEW	S.V.

It is the responsibility of the Contractor and/or Owner to ensure that the drawings with the latest revisions are used for construction.



**SBK** 5770 HURONTARIO STREET, SUITE 320  
MISSISSAUGA, ONTARIO, L5R 3K5  
T: 416.695.4949 F: 905.712.3101  
WWW.STRYBOS.COM

**STRYBOS BARRON KING**  
LANDSCAPE ARCHITECTURE

PROJECT:  
2650 SHERWOOD HEIGHTS DR  
OAKVILLE, ON  
SITE PLAN FILE #: SPA.1503.025/01

DRAWING TITLE:  
LANDSCAPE CONCEPT

SCALE: 1:250 PROJECT No. 5938  
DATE: JULY 26 2023  
DRAWN BY: S.D. DRAWING No. L100  
CHECKED BY: S.V.



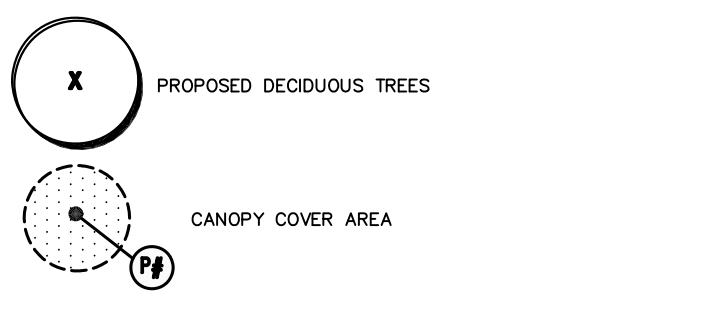
**GENERAL NOTES**

- VERIFY ALL DIMENSIONS.
- DO NOT SCALE DRAWINGS.
- REPORT ANY DISCREPANCIES, DISCOVERED ERRORS, OR OMISSIONS TO THE LANDSCAPE ARCHITECT BEFORE PROCEEDING.
- IT IS ADVISED THAT CONTRACTORS CONTACT THE LANDSCAPE ARCHITECT PRIOR TO CONSTRUCTION TO ENSURE THE USE OF THE LATEST REVISED DRAWINGS.
- DRAWINGS AND SPECIFICATIONS ARE THE PROPERTY OF THE LANDSCAPE ARCHITECT.

**KEYMAP**

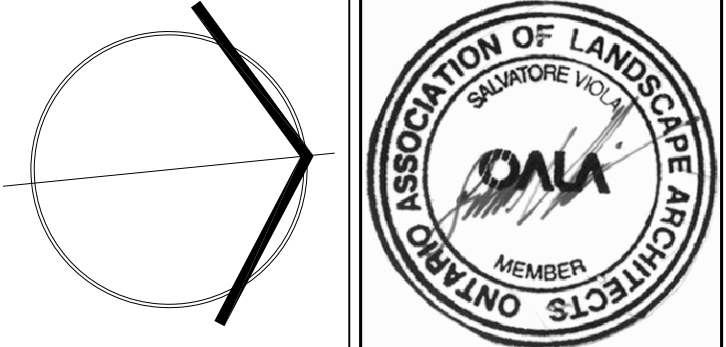


**LEGEND**



No.	DATE	REVISION	BY
1	JULY 26 2023	ISSUED FOR REVIEW	S.V.
2	JULY 31 2023	ISSUED FOR REVIEW	S.V.
3	AUG 21 2023	REVISION AS PER NEW SITEPLAN	S.V.
4	OCT 04 2023	ISSUED FOR REVIEW	S.V.
5	OCT 30 2023	REVISION AS PER NEW SITEPLAN	S.V.
6	NOV 01 2023	ISSUED FOR REVIEW	S.V.
7	MAY 25 2024	REVISION AS PER NEW SITEPLAN	S.V.
8	MAY 15 2024	REVISION AS PER LATEST CIVIL PLANS	S.V.

It is the responsibility of the Contractor and/or Owner to ensure that the drawings with the latest revisions are used for construction.



**SBK** 5770 HURONTARIO STREET, SUITE 320  
MISSISSAUGA, ONTARIO, L5R 3G5  
T: 416.695.4949 F: 905.712.3101  
WWW.STRYBOS.COM

**STRYBOS BARRON KING**  
LANDSCAPE ARCHITECTURE

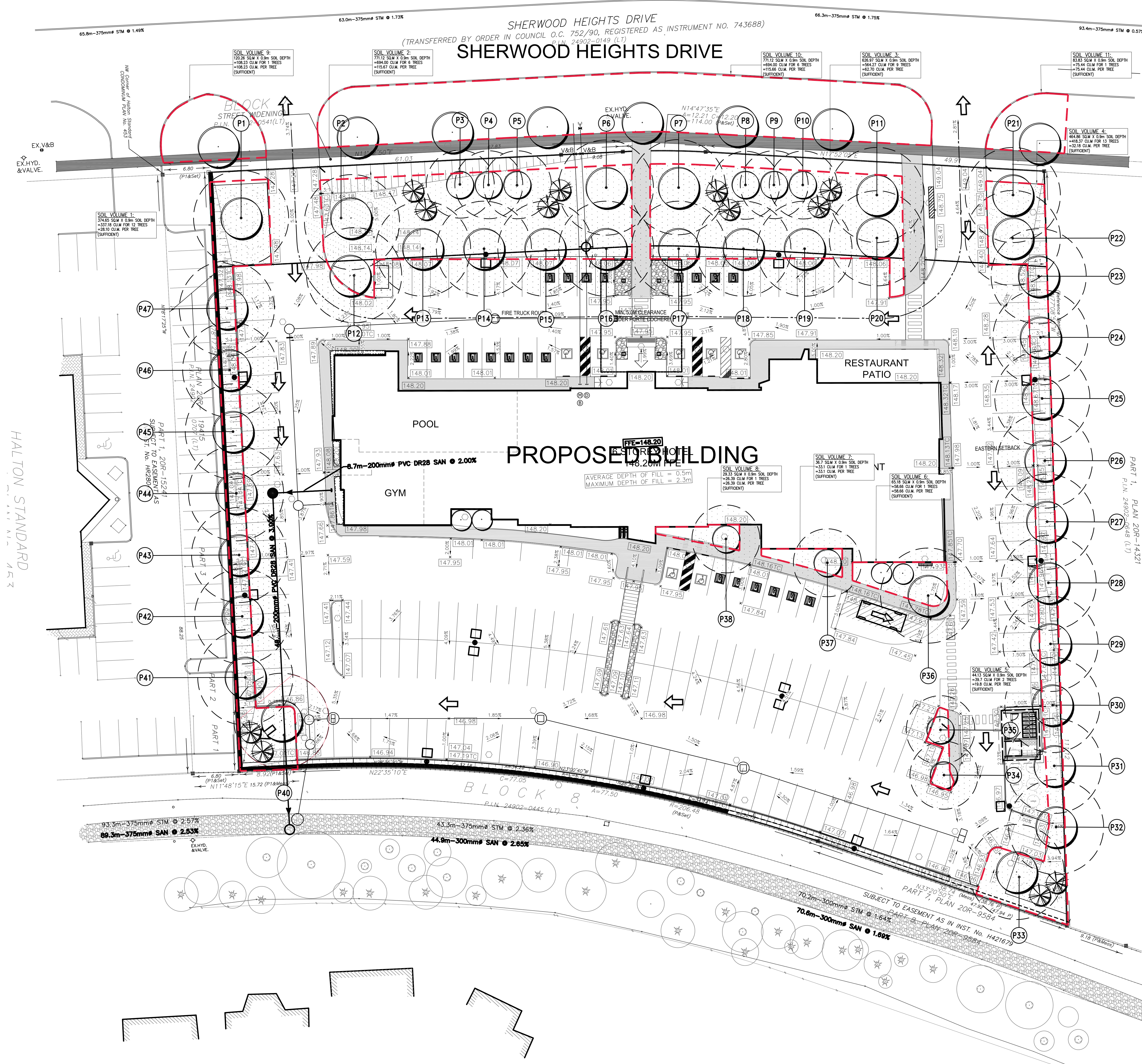
PROJECT:  
**2650 SHERWOOD HEIGHTS DR**

OAKVILLE, ON

SITE PLAN FILE #: SPA.1503.025/01

DRAWING TITLE:  
**CANOPY COVER PLAN (DRAFT)**

SCALE:	1:250	PROJECT No.	5938
DATE:	JULY 26 2023	DRAWN BY:	S.D.
CHECKED BY:	S.V.	DRAWING No.	L101



**CANOPY CALCULATION CHART - PROPOSED BUILDING ADDITION, 750 REDWOOD SQUARE**

TREE #	TREE SPECIES	# OF TREES	SOIL VOLUME (m³)	CROWN AREA (m²)	CANOPY AREA (m²)	TREE #
<b>Large Stature Trees (14 m spread)</b>						
P1	QUERCUS RUBRA	1	28.1	154	119.4	P1
P2	QUERCUS RUBRA	1	60.2	154	110.8	P2
P6	ACER RUBRUM	1	60.2	154	87.5	P6
P7	ACER RUBRUM	1	62.7	154	86.4	P7
P11	QUERCUS RUBRA	1	62.7	154	78.4	P11
P12	TILIA AMERICANA	1	60.2	154	127.9	P12
P13	TILIA AMERICANA	1	60.2	154	121.8	P13
P14	TILIA AMERICANA	1	60.2	154	102	P14
P15	TILIA AMERICANA	1	60.2	154	101.3	P15
P16	ACER RUBRUM	1	60.2	154	110.8	P16
P17	ACER RUBRUM	1	62.7	154	112.8	P17
P18	TILIA AMERICANA	1	62.7	154	104.5	P18
P19	TILIA AMERICANA	1	62.7	154	109.1	P19
P20	QUERCUS RUBRA	1	62.7	154	113.4	P20
P21	QUERCUS RUBRA	1	32.18	78.5	58.1	P21
P22	QUERCUS RUBRA	1	32.18	78.5	82	P22
P23	CELTIS OCCIDENTALIS	1	32.18	78.5	52.8	P23
P24	CELTIS OCCIDENTALIS	1	32.18	78.5	69.6	P24
P25	CELTIS OCCIDENTALIS	1	32.18	78.5	70.3	P25
P26	GINKGO BILOBA	1	32.18	78.5	69.1	P26
P27	GINKGO BILOBA	1	32.18	78.5	68.9	P27
P28	GINKGO BILOBA	1	32.18	78.5	68.9	P28
P29	GINKGO BILOBA	1	32.18	78.5	69	P29
P30	CELTIS OCCIDENTALIS	1	32.18	78.5	68.9	P30
P31	CELTIS OCCIDENTALIS	1	32.18	78.5	69	P31
P32	CELTIS OCCIDENTALIS	1	32.18	78.5	62.6	P32
P33	TILIA AMERICANA	1	32.18	154	120.6	P33
P36	TILIA AMERICANA	1	58.66	154	154	P36
P40	TILIA AMERICANA	1	28.1	154	130.5	P40
P41	CELTIS OCCIDENTALIS	1	28.1	154	62.4	P41
P42	CELTIS OCCIDENTALIS	1	28.1	154	72.3	P42
P43	GINKGO BILOBA	1	28.1	154	72.6	P43
P44	GINKGO BILOBA	1	28.1	154	73	P44
P45	GINKGO BILOBA	1	28.1	154	72.5	P45
P46	CELTIS OCCIDENTALIS	1	28.1	154	73.2	P46
P47	CELTIS OCCIDENTALIS	1	28.1	154	84.9	P47
<b>SUBTOTAL</b>					<b>3211.3</b>	
<b>Medium Stature Trees (10 to 13 m spread)</b>						
P3	SYRINGA RETICULATA	1	60.2	78.5	40.5	P3
P4	SYRINGA RETICULATA	1	60.2	78.5	26.6	P4
P5	SYRINGA RETICULATA	1	60.2	78.5	43.8	P5
P8	SYRINGA RETICULATA	1	62.7	78.5	42.1	P8
P9	SYRINGA RETICULATA	1	62.7	78.5	30.1	P9
P10	SYRINGA RETICULATA	1	62.7	78.5	44	P10
P34	SYRINGA RETICULATA	1	19.8	78.5	69.7	P34
P35	SYRINGA RETICULATA	1	19.8	78.5	71.1	P35
P37	SYRINGA RETICULATA	1	33.1	78.5	78.5	P37
P38	SYRINGA RETICULATA	1	26.39	78.5	78.5	P38
<b>SUBTOTAL</b>					<b>524.9</b>	
<b>CANOPY SUMMARY</b>					<b>Total # of trees</b>	<b>46</b>
<b>Site Area (m²)</b>					<b>11,757.90</b>	
<b>Site Canopy Cover</b>					<b>31.8%</b>	
<b>Site Canopy Cover Target</b>					<b>25%</b>	
<b>Total Canopy Area (m²)</b>					<b>3736.2</b>	

HALTON STANDARD