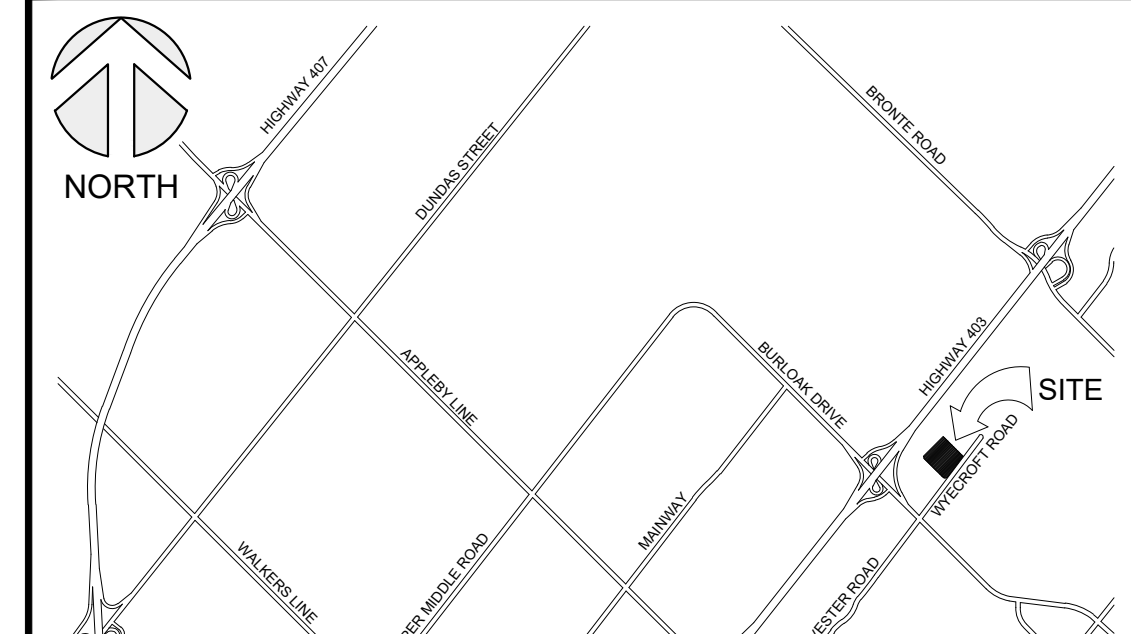




OAKVILLE, ONTARIO
NEW WAREHOUSE AND FUEL FACILITY

**COSTCO
WHOLESALE
CORPORATION**

999 LAKE DRIVE
ISSAQUAH, WA 98027
T: 425.313.8100
Costco.com

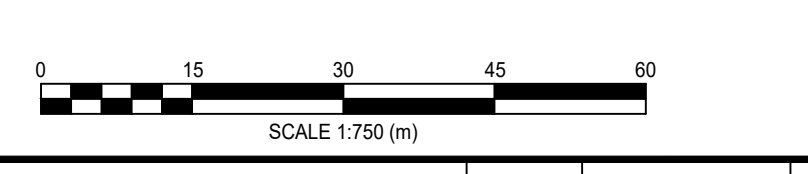


KEY PLAN
NTS

PROJECT DATA

PROJECT ADDRESS: 3471, 3487, 3505, 3509, 3513, 3517 & 3521 WYECROFT ROAD OAKVILLE, ONTARIO
SITE AREA: 63,726.9m² (6.37 ha) / 15.75 ac
ZONING: C3 - CORE COMMERCIAL
JURISDICTION: CITY OF OAKVILLE
BOUNDARY INFORMATION: THIS DRAWING IS BASED ON A SURVEY FROM J.D. BARNES LIMITED, DATED DEC. 3, 2021.

BUILDING DATA (WM REFERENCE FILE - JUNE 10, 2024)	AREA
TOTAL WAREHOUSE LEVEL GFA	15,662.6m ² 168,591ft ²
TOTAL WAREHOUSE LEVEL NFA	14,794.9m ² 159,251ft ²
FUEL FACILITY MECHANICAL ENCLOSURE	11.6m ² 125ft ²
FUEL FACILITY WARMING HUT	1.4m ² 15ft ²
BUILDING HEIGHT	10.744m
SITE DATA	
LOT COVERAGE	24.6% 15,662.6m ²
LANDSCAPE OPEN SPACE	18.3% 11,654.9m ²
PAVED PARKING AREA	57.1% 36,409.4m ²
PARKING DATA	
TOTAL PARKING REQUIRED (@ 1 STALL / 18.0m ² OF NFA)	822
BARRIER FREE PARKING REQUIRED (@ 1% OF 868 * 11)	20
SURFACE PARKING:	
NUMBER OF 3.05m WIDE PARKING SPACES PROVIDED	673
NUMBER OF 3.81m WIDE ACCESSIBLE PARKING SPACES PROVIDED	16
UNDERGROUND PARKING:	
NUMBER OF 2.8m WIDE PARKING SPACES PROVIDED	305
NUMBER OF 3.81m WIDE ACCESSIBLE PARKING SPACES PROVIDED	6
TOTAL COSTCO PARKING PROPOSED	1,000
BICYCLE PARKING REQUIRED (@ 1 / 1,000m ² OF NFA)	15
BICYCLE PARKING PROPOSED	16



REVISIONS	BY	DATE	APPR.

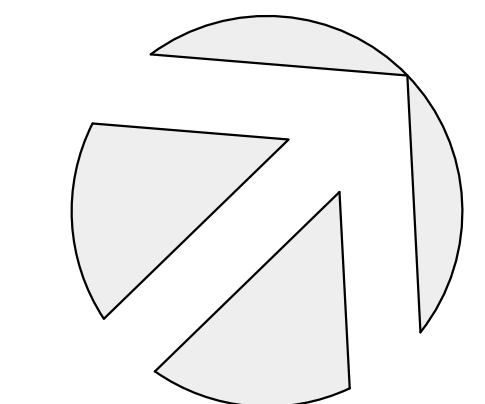
ISSUED FOR APPROVAL, NOT FOR CONSTRUCTION
ALL PREVIOUS ISSUES OF THIS DRAWING ARE SUPERSEDED

SHEET TITLE
SITE PLAN



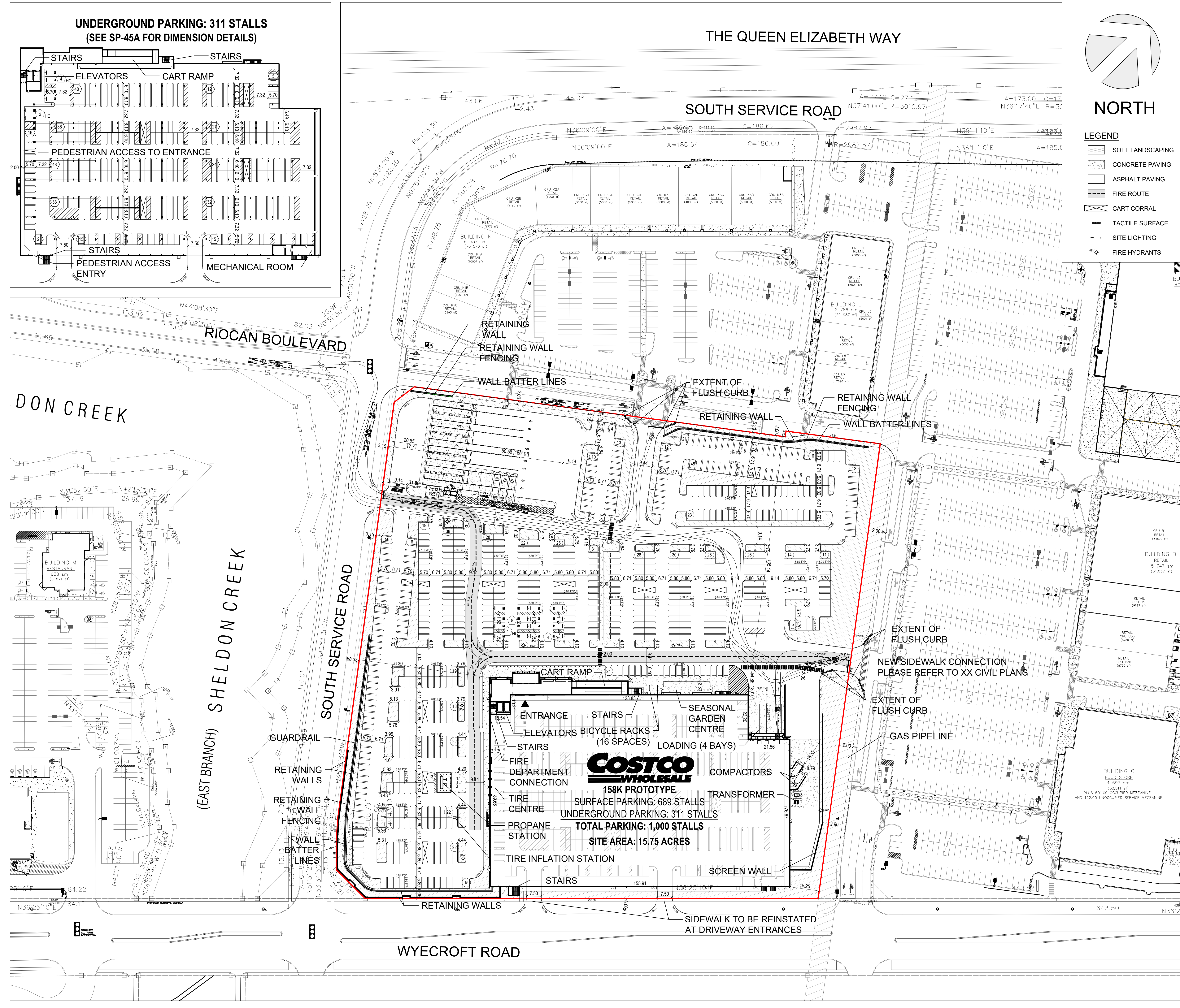
DESIGNED CJM/DSB	DRAWN CJM	CHECKED DSB
SCALE 1:750	DATE JULY 18, 2024	DWG. NUMBER SP-45
PROJECT NUMBER 211-08276-00-P01		

THE QUEEN ELIZABETH WAY



NORTH

- LEGEND**
- SOFT LANDSCAPING
 - CONCRETE PAVING
 - ASPHALT PAVING
 - FIRE ROUTE
 - CART CORRAL
 - TACTILE SURFACE
 - SITE LIGHTING
 - FIRE HYDRANTS



FILENAME: W:\Users\Creston\211-08276-00 - Costco Oakville (Wycroft)\DWG\2024 07\Oakville (Wycroft) SP-45.dwg
PLOT DATE: Jul 26, 2024 1:34pm