

PLAN OF SURVEY ILLUSTRATING TOPOGRAPHY OF
PART OF LOT 17, CONCESSION 3
 SOUTH OF DUNDAS STREET
 (GEOGRAPHIC TOWNSHIP OF TRAFALGAR)
 TOWN OF OAKVILLE
 REGIONAL MUNICIPALITY OF HALTON
 SCALE 1 : 250

J.D. BARNES LIMITED
 © COPYRIGHT
 METRIC DISTANCES AND/OR COORDINATES SHOWN ON THIS PLAN ARE IN METRES AND CAN BE CONVERTED TO FEET BY DIVIDING BY 0.3048

ELEVATION NOTES
 ELEVATIONS SHOWN ON THIS PLAN ARE RELATED TO GEODETIC DATUM AND HAVE BEEN DERIVED FROM TOWN OF OAKVILLE BENCHMARK NO. 30, WITH A PUBLISHED ELEVATION = 89.817m

LOCAL BENCHMARK
 LOCAL BENCHMARK No. 1: CUT CROSS IN CONCRETE CURB ON THE SOUTH SIDE OF GARDEN DRIVE LOCATED MEDIALLY WEST OF THE ENTRANCE TO No. 128 GARDEN DRIVE. ELEVATION = 87.84m
 LOCAL BENCHMARK No. 2: CUT CROSS ON CONCRETE PAD FOR HYDRO TRANSFORMER LOCATED ON THE SOUTH SIDE OF GARDEN DRIVE. ELEVATION = 87.34m

NOTES
 BEARINGS ARE UTM GRID, DERIVED FROM OBSERVED REFERENCE POINTS A AND B, BY REAL TIME NETWORK (RTN) OBSERVATIONS, UTM ZONE 17, NAD83 (CSRS) (2010.0).
 DISTANCES ARE GROUND AND CAN BE CONVERTED TO GRID BY MULTIPLYING BY THE COMBINED SCALE FACTOR OF 0.999733.
 FOR BEARING COMPARISONS, A ROTATION OF "05600S" COUNTER-CLOCKWISE WAS APPLIED TO BEARINGS ON P-3.

INTEGRATION DATA

OBSERVED REFERENCE POINTS (ORPs):	UTM ZONE 17, NAD83 (CSRS) (2010.0)	
COORDINATES TO URBAN ACCURACY PER SECTION 14 (2) OF O.REG 216/10.		
POINT ID	EASTING	NORTHING
ORP (A)	606 843.06	4 810 237.53
ORP (B)	606 956.39	4 810 125.85

COORDINATES CANNOT, IN THEMSELVES, BE USED TO RE-ESTABLISH CORNERS OR BOUNDARIES SHOWN ON THIS PLAN.

LEGEND

■	DENOTES SURVEY MONUMENT FOUND
□	DENOTES SURVEY MONUMENT SET
SSB	DENOTES SHORT STANDARD IRON BAR
IB	DENOTES IRON BAR
CC	DENOTES CUT CROSS
CCB	DENOTES CUT CROSS BAR
WT	DENOTES WITNESS
P1	DENOTES HALTON COMMON ELEMENTS CONDOMINIUM PLAN No. 696
P2	DENOTES SURVEYOR'S REAL PROPERTY REPORT BY J.D. BARNES LIMITED, DATED MAY 24, 2017. FILE No. 17-30-077-00.
P3	DENOTES PLAN 20R-6837
P4	DENOTES HALTON CONDOMINIUM PLAN No. 627
P5	DENOTES BUILDING LOCATION SURVEY BY FRED G. CUNNINGHAM, O.L.S., DATED MAY 15, 1989. FILE No. 89.61.
D1	DENOTES INSTRUMENT No. 793162
D2	DENOTES INSTRUMENT No. 715722
D3	DENOTES INSTRUMENT No. 667098
D4	DENOTES INSTRUMENT No. 767113
D5	DENOTES INSTRUMENT No. 805376
D6	DENOTES INSTRUMENT No. 333503
MEAS	DENOTES MEASURED

N=NORTH / S=South / E=East / W=West
 ALL FOUND SURVEY MONUMENTS WERE ORIGINALLY SET BY J.D. BARNES LIMITED, UNLESS NOTED OTHERWISE.

ALL SET SSB AND PB MONUMENTS WERE USED DUE TO LACK OF OVERBURDEN AND/OR PROXIMITY OF UNDERGROUND UTILITIES IN ACCORDANCE WITH SECTION 11 (4) OF O.R.E.G. 525/91.
 PRIMARY CONTOURS ARE AT 1.00m INTERVALS.
 SECONDARY CONTOURS ARE AT 0.25m INTERVALS.
 ALL CURB ELEVATIONS ARE FROM THE TOP OF CURB.

TOPOGRAPHIC LEGEND

□	DENOTES CATCHBASIN
+ BV	DENOTES BREATHER VALVE
■ GK	DENOTES GAS KEY
● HW	DENOTES HANDWELL
○ MMH	DENOTES HYDRO MANHOLE
○ MH	DENOTES MANHOLE
○ SAN MH	DENOTES SANITARY MANHOLE
○ STM MH	DENOTES STORM MANHOLE
○ BH	DENOTES BORE HOLE
● MW	DENOTES MONITORING WELL
● HP	DENOTES HYDRO POLE
● LS	DENOTES LIGHT STANDARD
□ TUB	DENOTES TELEPHONE JUNCTION BOX
▬ TPED	DENOTES TELEPHONE PEDAL
□ CPED	DENOTES CABLE TV PEDAL
⊕ H	DENOTES FIRE HYDRANT
⊕ WK	DENOTES WATER KEY
⊕ WV	DENOTES WATER VALVE
⊕ SAN	DENOTES UNDERGROUND SANITARY SEWER
⊕ STM	DENOTES UNDERGROUND STORM SEWER
⊕ G	DENOTES UNDERGROUND GAS LINE
⊕ W	DENOTES UNDERGROUND WATER LINE
⊕ UE	DENOTES UNDERGROUND HYDRO LINE
⊕ UC	DENOTES UNDERGROUND CABLE LINE
⊕ UT	DENOTES UNDERGROUND HYDRO LINE

ADDITIONAL FIELDWORK WAS COMPLETED ON 12th DAY OF JUNE, 2024.

SURVEYOR'S CERTIFICATE

I CERTIFY THAT:
 1. THIS SURVEY AND PLAN ARE CORRECT AND IN ACCORDANCE WITH THE SURVEY ACT, THE SURVEYORS ACT AND THE REGULATIONS MADE UNDER THEM.
 2. THE SURVEY WAS COMPLETED ON THE 8th DAY OF DECEMBER, 2020.

MAY 3, 2019
 DATE
 SUNIL PERERA
 ONTARIO LAND SURVEYOR

J.D. BARNES SURVEYING & MAPPING
 LAND INFORMATION SPECIALISTS
 401 WHEELABRATOR WAY, SUITE A, MILTON, ON L7V 3C1
 T: (905) 875-9955 F: (905) 875-9956 www.jdbarnes.com

DRAWN BY: RSO/CE/IE/AP CHECKED BY: AB REFERENCE NO.: 17-30-077-01-A
 FILE: G:\17-30-077\01\Drawing\17-30-077-01-A.dgn DATED: DECEMBER 16th, 2020
 PLOTTED: 6/18/2024

SEWER INVERT DATA TABLE

CB#	DIRECTION	DIAMETER	INVERT	TOP OF LID/GRADE ELEVATION
CB#1	S	250	1.27	87.02
CB#2	E	250	1.22	86.98
CB#3	SW	250	1.33	85.82
CB#4	NE	250	1.26	85.71
CB#5	E	450	2.17	85.95
CB#6	NW	300	3.67	86.51
CB#7	SE	300	1.33	85.98
CB#8	NW	300	1.38	86.00
CB#9	SE	300	1.29	85.33
CB#10	N	300	1.30	87.58
CB#10	W	200	1.10	87.58
STM MH#1	N	250	2.99	87.03
STM MH#1	SE	250	3.05	87.03
STM MH#1	SW	250	3.02	87.03
STM MH#1	W	250	3.09	87.03
STM MH#2	NW	450	2.52	87.77
STM MH#2	SE	450	2.55	87.77
STM MH#2	W	300	2.35	87.77
STM MH#3	NW	450	2.60	85.52
STM MH#3	SE	450	2.60	85.52
STM MH#3	SW	450	2.60	85.52
STM MH#3	W	450	2.60	85.52
STM MH#4	N	450	1.92	87.66
STM MH#4	E	300	1.90	87.66
SAN MH#1	NW	300	3.10	87.19
SAN MH#1	SE	250	3.09	87.19
SAN MH#2	NW	250	1.83	86.01
SAN MH#2	S	30	1.00	86.01

UNDERGROUND UTILITY NOTES
 THE UTILITY DATA DEPICTED ON THIS DRAWING WERE ACQUIRED IN ACCORDANCE WITH ASSC STANDARD 38-02. THE INFORMATION IS SHOWN BY ATTRIBUTED QUALITY LEVELS WHICH ARE DEFINED AS FOLLOWS.

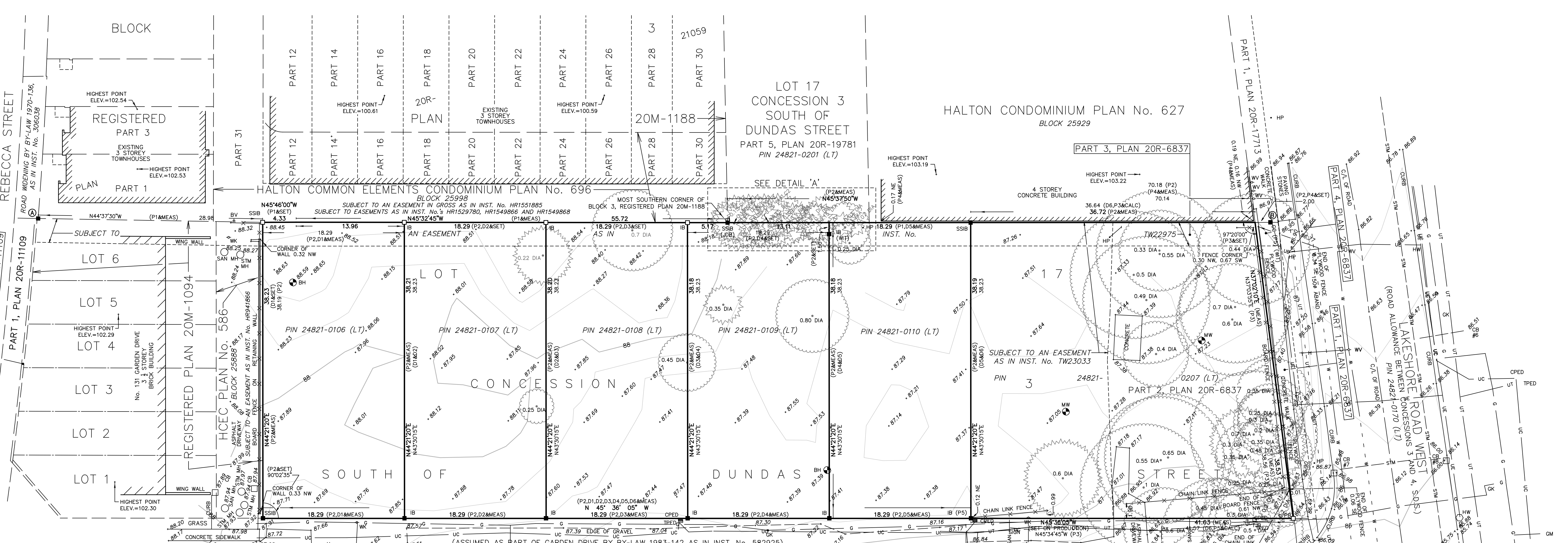
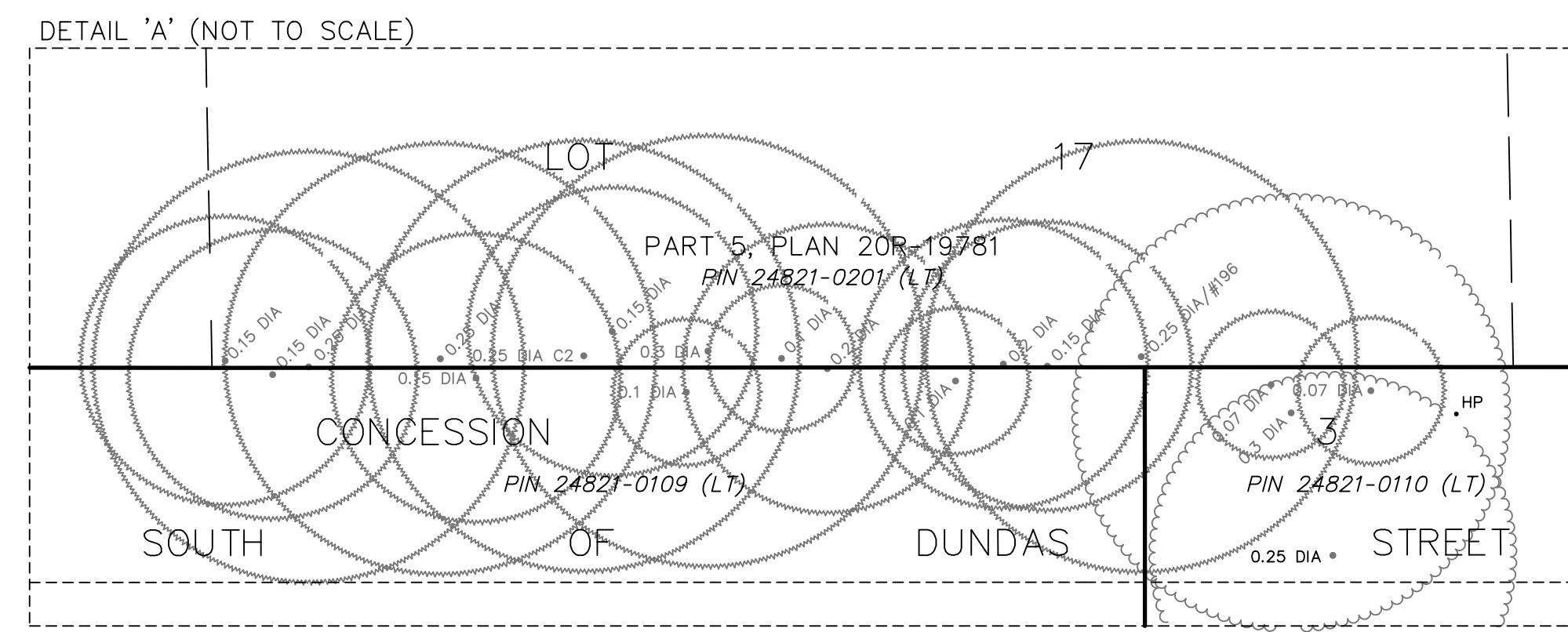
DATA QUALITY LEVEL

HIGHEST QUALITY: QUALITY LEVEL A
 QUALITY LEVEL B
 QUALITY LEVEL C
 QUALITY LEVEL D
LOWEST QUALITY: QUALITY LEVEL D

QUALITY LEVEL "A" - INFORMATION OBTAINED BY ACTUAL PHYSICAL EXPOSURE OF TARGETED UTILITIES AND SUBSEQUENT MEASUREMENT OF THE EXPOSED PRECISE HORIZONTAL AND VERTICAL POSITION.
 QUALITY LEVEL "B" - INFORMATION OBTAINED USING GEOSPHERICAL LOCALIZATION TECHNIQUES TO IDENTIFY THE EXISTENCE AND APPROXIMATE HORIZONTAL POSITION OF THE DESIGNATED UTILITIES.
 QUALITY LEVEL "C" - INFORMATION OBTAINED BY SURVEYING AND PLOTTING VISIBLE UTILITY FEATURES AND BY USING PROFESSIONAL JUDGMENT IN CORRELATING THIS INFORMATION TO THE QUALITY "D" INFORMATION OBTAINED.
 QUALITY LEVEL "D" - INFORMATION DERIVED FROM UTILITY RECORDS OR VERBAL RECOLLECTIONS, UNLESS NOTED OTHERWISE.
 ALL SERVICES ARE QUALITY "D" UNLESS NOTED OTHERWISE.
 LEVEL "D" RECORD INFORMATION SHOWN ON THIS PLAN HAS BEEN PLOTTED APPROXIMATELY AS PER THE RECORDS FOUND AND COULD NOT BE FIELD VERIFIED WITHIN THE SCOPE OF THIS PROJECT. IF FURTHER VERIFICATION IS REQUIRED, IT IS SUGGESTED THAT LEVEL "A" METHODOLOGIES BE EMPLOYED.
 QUALITY LEVEL "D" INFORMATION OBTAINED FROM TOWN OF OAKVILLE MUNICIPAL DRAWING No R-481-11 AND No O-8919 UNION GAS JOB #2019155142, BELL CANADA MUNICIPAL OPERATIONS CENTRE MARK UP #75954.

IT IS THE RESPONSIBILITY OF THE CONTRACTOR TO VERIFY THAT LOCAL BENCHMARKS HAVE NOT BEEN ALTERED OR DISTURBED AND THAT THE RELATIVE ELEVATIONS AGREE WITH THE INFORMATION SHOWN ON THIS PLAN.

CAUTION: CALL BEFORE YOU DIG
 THIS PLAN IS INTENDED FOR DESIGN PURPOSES ONLY. OTHER BURIED UTILITIES MAY EXIST WHICH ARE NOT SHOWN DUE TO INSUFFICIENT INFORMATION OR IMPROPER INSTALLATION. CONTACT ALL POTENTIAL OWNERS OF UNDERGROUND UTILITIES PRIOR TO CONSTRUCTION OR BREAKING GROUND.
 IT IS THE RESPONSIBILITY OF THE CONTRACTOR/BUILDER TO ENSURE THE APPROPRIATE LEGAL REQUIREMENTS ARE MET.



INFORMATION OBTAINED FROM RECORDS PROVIDED BY TOWN OF OAKVILLE MUNICIPAL DRAWING No R-481-11. NOT FIELD VERIFIED BY J.D. BARNES LTD. OR OTHER LOCALITIES INC. METRIC - REGISTERED INSTRUMENT - ACCURATE MEASUREMENT COULD NOT BE OBTAINED