



NHS AREA

FUTURE RESIDENTIAL CONDOMINIUM

PUBLIC R.O.W.  
OWLSNEST WAY

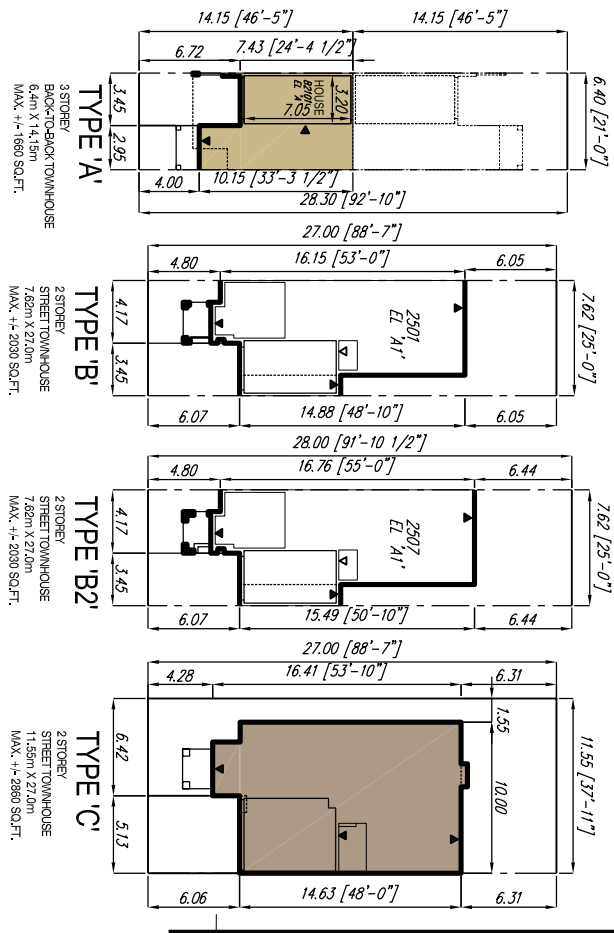
PUBLIC R.O.W.  
OWLSNEST WAY

7.0m CONDO ROAD

7.0m CONDO ROAD

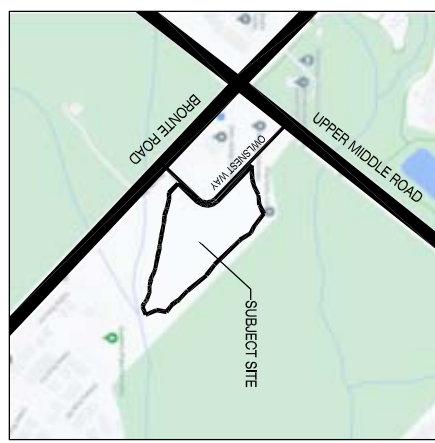
**UNIT TYPES**

SCALE 1:500



**KEYMAP**

N.T.S.



**SITE STATISTICS**

1. SITE AREAS		HECTARE	ACRE
PART 'A'		1.9045	4.7061
NET DEVELOPMENT AREA		1.9045	4.7061

**2. UNIT COUNT**

UNIT TYPE	#
TYPE 'A' - 6.4m, 3 STOREY, BACK TO BACK TOWNHOUSE	38
TYPE 'B' - 7.62m, 2 STOREY, CONN. TOWNHOUSE (1 CAR)	29
TYPE 'C' - 11.55m, 2 STOREY, CONN. TOWNHOUSE (2 CAR)	9
<b>TOTAL</b>	<b>76</b>

**3. DENSITY**

# OF UNITS / NET DEV. AREA	UNITS / HECTARE	UNITS / ACRE
	39.91	16.15

**4. RESIDENT PARKING**

UNIT COUNT	REQUIRED	PROVIDED
76.00	2.00	152.00
	PER UNIT	PER UNIT
	TOTAL	TOTAL

**5. VISITOR PARKING**

UNIT COUNT	REQUIRED	PROVIDED
76.00	0.25	19.00
	PER UNIT	PER UNIT
	TOTAL	TOTAL



DESIGN ASSOCIATES INC.  
WWW.HUNTDG.COM

**FERNBROOK HOMES - 223033**  
BRONTE RD., OAKVILLE, ONTARIO

8966 Woodbine Ave, Markham, ON L3R 0J7 | T. 905.757.5133 | MAY. 2023 | VG | 223033DSP01

CONCEPTUAL SITE PLAN SCALE 1:750

All drawings specifications, related documents and design are the copyright property of Hunt Design Associates (H.D.A.). Reproduction of this property in whole or in part is strictly prohibited without H.D.A.'s written permission.

## Fernbrook Homes - 223033

**Bronte Rd.**  
**Oakville, Ontario**  
**February 2, 2024**  
**DL: Nadine Z PM: TBD**

<b>Energy Efficiency Package:</b>			A6	
<b>Lots:</b>	76	<b>Blocks:</b>	10	
<b>Ceiling Hgt:</b>	Bsmt.	Grnd.	Sec.	Third
<b>Towns -</b>	9'1"	9'1"	9'1"	0'0"
<b>Singles -</b>				

### DESIGN NET AREA CALCULATION

<u>21' B2B Towns</u>	<u>Elev. 'A1'</u>	<u>Elev. 'A2'</u>	<u>Fin. Foyer</u>	<u>W/ Opt. Roof Terr.</u>	
2101	1637 sf End – 1683 sf			1863 sf End - 1918 sf	The Cartier
2102	1626 sf End – 1672 sf			1798 sf End – 1848 sf	The Omega
2103C	1718 sf	1714 sf		A1 -1938 sf A2 -1934 sf	The Rolex
2104C – lot 29 & 66	1683 sf	1683 sf		A1-1903 sf A2- 1903 sf	
<u>25' Street Towns</u>	<u>Elev. 'A1'</u>	<u>Elev. 'A2'</u>	<u>Fin. Foyer</u>		<u>Model Names</u>
2501	2074 sf	2074 sf	90 sf		The Yacht
2502	2071 sf		90 sf		The Golf
2503 – Lot 22	2281 sf		95 sf		
2504 – Lot 11	2431 sf		95 sf		The Pendant
2505 – Lot 16 & 17	2263 sf		95 sf		The Sterling
2506 – Lot 76	2270 sf		82 sf		
2507 – Lot 2, 27	1992 sf	1992 sf	90 sf		
2508 – Lot 3,	1989 sf		90 sf		
<u>36' Street</u>	<u>Elev. 'A1'</u>	<u>Elev. 'A2'</u>			<u>Model Names</u>
3601 – Lot 10	3049 sf		115 sf		The Bentley
3602 – Lot 23	2789 sf		115 sf		The Charter
3603 – Lot 28	2838 sf		116 sf		
3604C – Lot 1	3151 sf		127 sf		
3605C – Lot 71	3200 sf		108 sf		The Polo
3606 – Lot 4	2465 sf		91 sf		
3607 – Lot 67	2440 sf		78 sf		
3608 – Lot 5	3342 sf		94 sf		The Tiffany
3609 – Lot 70	3196 sf		86 sf		