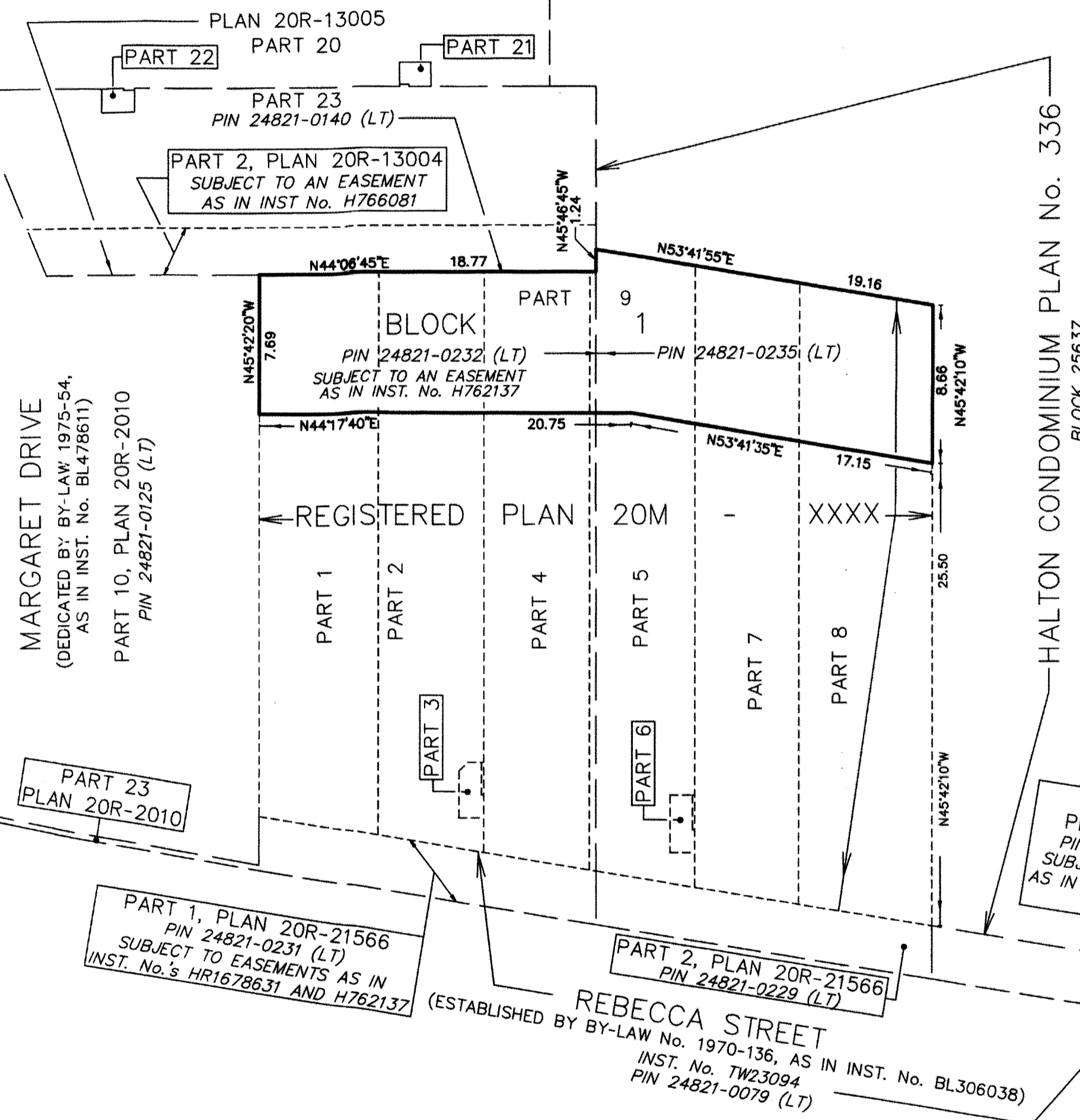


BLOCK 2  
REGISTERED PLAN 20M-709



DRAFT PLAN OF COMMON ELEMENTS CONDOMINIUM  
**PART OF BLOCK 1**  
**REGISTERED PLAN 20M-XXXX**  
TOWN OF OAKVILLE  
REGIONAL MUNICIPALITY OF HALTON  
SCALE 1 : 250  
J.D. BARNES LIMITED

**METRIC** DISTANCES AND COORDINATES SHOWN ON THIS PLAN ARE IN METRES AND CAN BE CONVERTED TO FEET BY DIVIDING BY 0.3048.

**ADDITIONAL INFORMATION REQUIRED UNDER SECTION 51 (17) OF THE PLANNING ACT.**

- FOR A, B, C, E, F, G AND J SEE DRAFT PLAN AND KEY PLAN
- D EACH PARCEL OF TIED LAND IS SINGLE RESIDENTIAL, THE OWNER OF WHICH HAS OUTRIGHT OWNERSHIP.
- H MUNICIPAL WATER IS AVAILABLE ON ADJACENT STREETS
- I CLAY LOAM
- K MUNICIPAL STORM AND SANITARY SEWERS ARE AVAILABLE ON ADJACENT STREETS.
- L ALL EASEMENTS AFFECTING THE SUBJECT SITE ARE SHOWN ON THE FACE OF THIS PLAN.

**OWNER'S CERTIFICATE**

I HEREBY CONSENT TO THE SUBMISSION OF THIS PLAN FOR APPROVAL.  
**2667711 ONTARIO INC.**

July 20/2022  
DATE ANITA DHARAMSHI

**SURVEYOR'S CERTIFICATE**

I HEREBY CERTIFY THAT THE BOUNDARIES OF THE LAND TO BE DEVELOPED AS SHOWN ON THIS PLAN AND THEIR RELATIONSHIP TO THE ADJACENT LANDS, ARE ACCURATELY AND CORRECTLY SHOWN.

June 21, 2022  
DATE G. T. Stidwill  
G. T. STIDWILL  
ONTARIO LAND SURVEYOR

**J.D. BARNES LIMITED**  
SURVEYING MAPPING GIS  
LAND INFORMATION SPECIALISTS  
401 WHEELABRATOR WAY, SUITE A, MILTON, ON L9T 3C1  
T: (905) 875-9955 F: (905) 875-9956 www.jdbarnes.com

DRAWN BY: CE	CHECKED BY: GS	REFERENCE NO.: 13-30-540-11
FILE: G:\13-30-540\11\Drawing\13-30-540-11.dgn		DATED: SEPT. 15, 2021