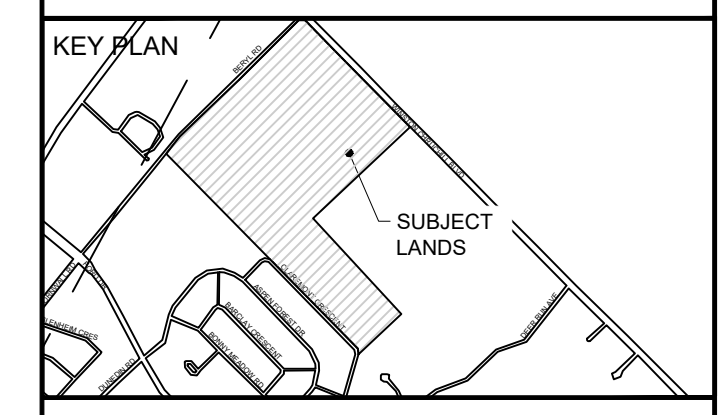


CLIENT
772 WINSTON CHURCHILL LIMITED PARTNERSHIP
 2710-333 BAY STREET TORONTO, ON M5H 2R2

COPYRIGHT
 This drawing has been prepared solely for the intended use, thus any reproduction or distribution for any purpose other than authorized by Arcadis is forbidden. Written dimensions shall have precedence over scaled dimensions. Contractors shall verify and be responsible for all dimensions and conditions on the job, and Arcadis shall be informed of any variations from the dimensions and conditions shown on the drawing. Shop drawings shall be submitted to Arcadis for general conformance before proceeding with fabrication.

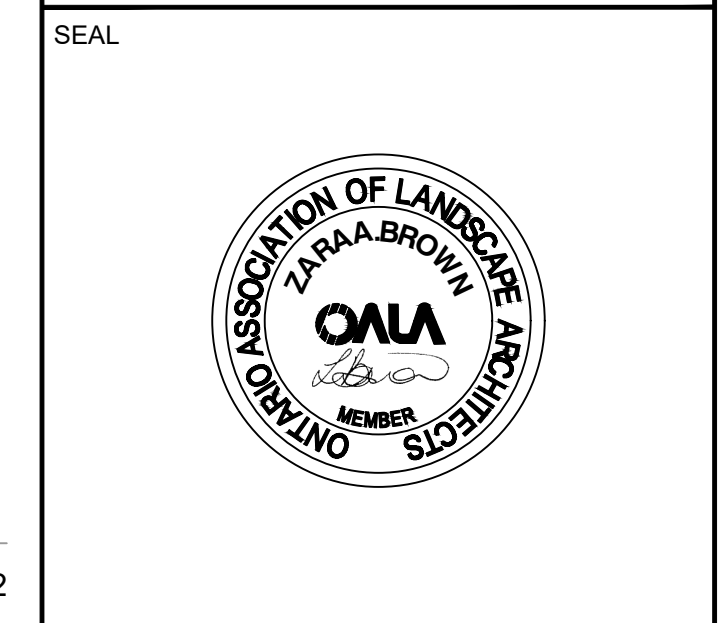
Arcadis Professional Services (Canada) Inc.
Formerly IBI Group Professional Services (Canada) Inc.

ISSUES		
No.	DESCRIPTION	DATE
1	SPA SUBMISSION	2021-05-31
2	REISSUED FOR SPA	2021-11-10
3	REISSUED FOR SPA	2022-12-15
4	SANITARY EASEMENT SUBMISSION	2023-09-26
5	4th SPA SUBMISSION	2023-11-30
6	5th SPA SUBMISSION	2024-05-10



CONSULTANTS

NOT FOR CONSTRUCTION



PRIME CONSULTANT
ARCADIS
 360 James Street North - Suite 200
 Hamilton ON L8L 1H5 Canada
 tel 905 546 1010
 www.arcadis.com

PROJECT
WAREHOUSE DEVELOPMENT
 772 WINSTON CHURCHILL BLVD
 OAKVILLE, ONTARIO

PROJECT NO:
 133366
 DRAWN BY:
Z. BROWN
 PROJECT MGR:
A. MINNS
 CHECKED BY:
T. O'BRIEN
 APPROVED BY:
T. O'BRIEN

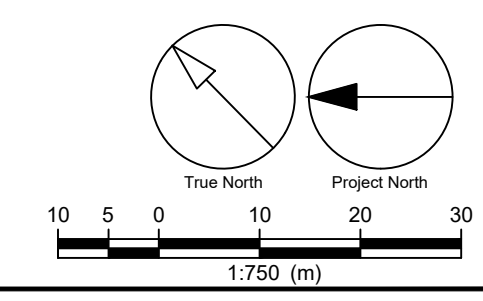
SHEET TITLE
TREE PROTECTION PLAN

SHEET NUMBER
TPP-1
 ISSUE
6

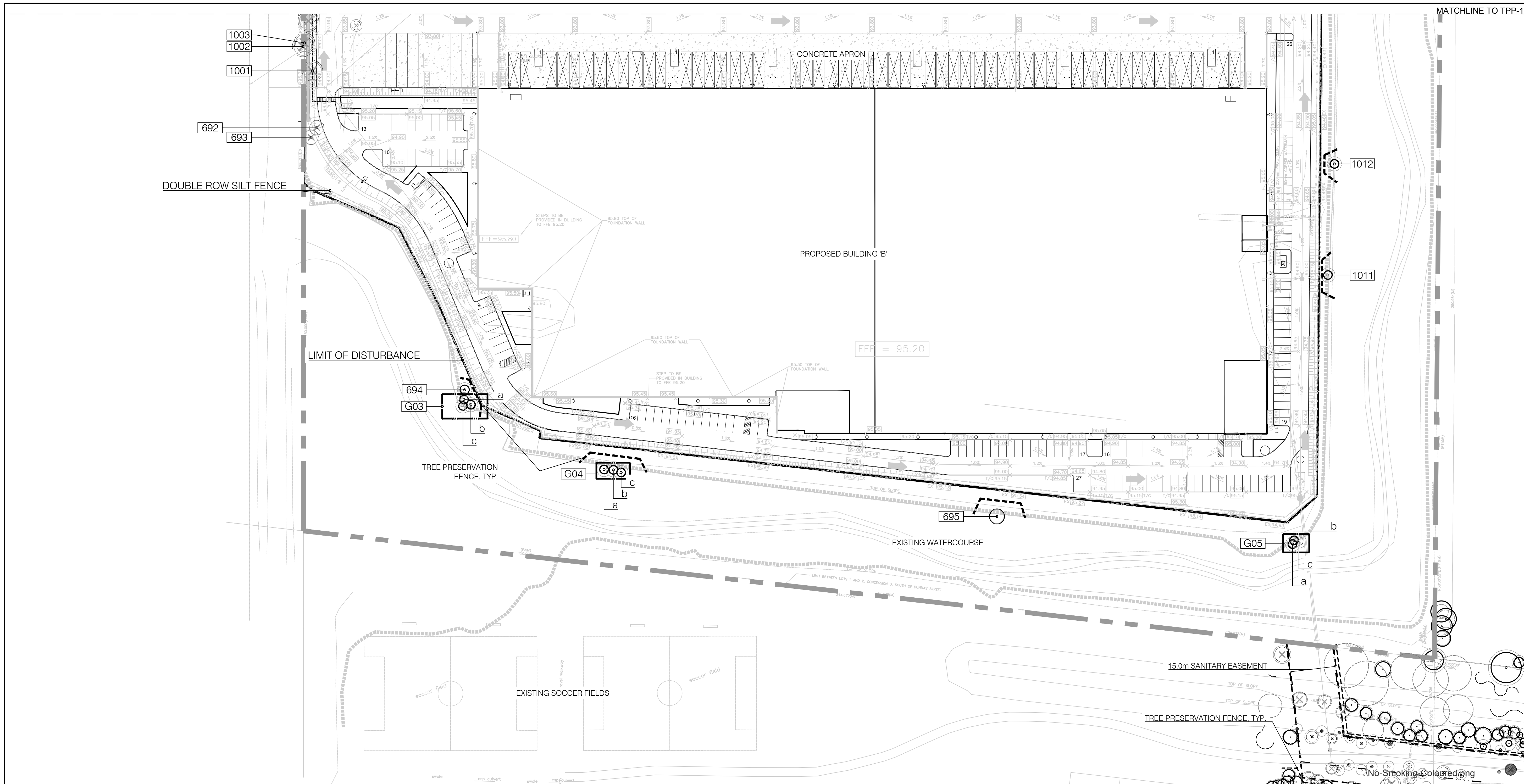
LEGEND

- MINIMUM PROTECTION ZONE
- EX. DECIDUOUS TREE TO REMAIN
- EX. CONIFEROUS TREE TO REMAIN
- EX. DECIDUOUS TREE TO BE REMOVED
- TREE PROTECTION BARRIER, SEE DETAIL 1, TPD-3
- TREE GROUP
- TREE TAG / IDENTIFICATION

FOR EXISTING TREE IDENTIFICATION TABLE AND TREE PROTECTION DETAILS REFER TO TPD-1 - TPD-3



File Location: \\133366_772_Winst7_0_Production\7_03_Design\05_Landscape\Sheets\133366_TPP.dwg
 Last Saved: May 14, 2024, by Taylor Kemp
 Plotted: Tuesday, May 14, 2024 11:06:03 AM by Taylor Kemp
 1/16



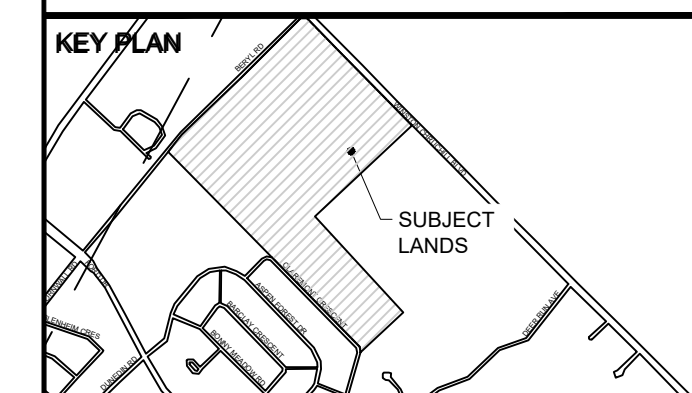
MATCHLINE TO TPP-1

CLIENT
772 WINSTON CHURCHILL LIMITED PARTNERSHIP
 2710-333 BAY STREET TORONTO, ON M5H 2R2

COPYRIGHT
 This drawing has been prepared solely for the intended use, thus any reproduction or distribution for any purpose other than authorized by Arcadis is forbidden. Written dimensions shall have precedence over scaled dimensions. Contractors shall verify and be responsible for all dimensions and conditions on the job, and Arcadis shall be informed of any variations from the dimensions and conditions shown on the drawing. Shop drawings shall be submitted to Arcadis for general conformance before proceeding with fabrication.

Arcadis Professional Services (Canada) Inc.
 formerly IBI Group Professional Services (Canada) Inc.

ISSUES		
No.	DESCRIPTION	DATE
1	SPA SUBMISSION	2021-05-31
2	REISSUED FOR SPA	2021-11-10
3	REISSUED FOR SPA	2022-12-15
4	SANITARY EASEMENT SUBMISSION	2023-09-26
5	4th SPA SUBMISSION	2023-11-30
6	5th SPA SUBMISSION	2024-05-10



CONSULTANTS

NOT FOR CONSTRUCTION



PRIME CONSULTANT
ARCADIS
 360 James Street North - Suite 200
 Hamilton ON L8L 1H5 Canada
 tel 905 546 1010
 www.arcadis.com

PROJECT
WAREHOUSE DEVELOPMENT
 772 WINSTON CHURCHILL BLVD
 OAKVILLE, ONTARIO

PROJECT NO:
 133366
 DRAWN BY:
Z. BROWN
 PROJECT MGR:
A. MINNS
 CHECKED BY:
T. O'BRIEN
 APPROVED BY:
T. O'BRIEN

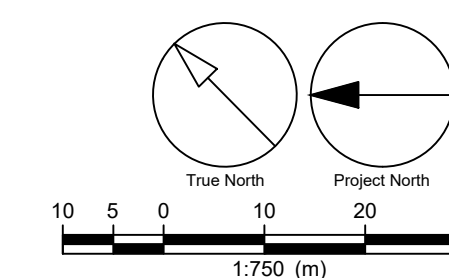
SHEET TITLE
TREE PROTECTION PLAN

SHEET NUMBER
TPP-2
 ISSUE
6

LEGEND

- MINIMUM PROTECTION ZONE
- EX. DECIDUOUS TREE TO REMAIN
- EX. CONIFEROUS TREE TO REMAIN
- EX. DECIDUOUS TREE TO BE REMOVED
- TREE PROTECTION BARRIER, SEE DETAIL 1, TPD-3
- TREE GROUP
- TREE TAG / IDENTIFICATION

FOR EXISTING TREE IDENTIFICATION TABLE AND TREE PROTECTION DETAILS REFER TO TPD-1 - TPD-3



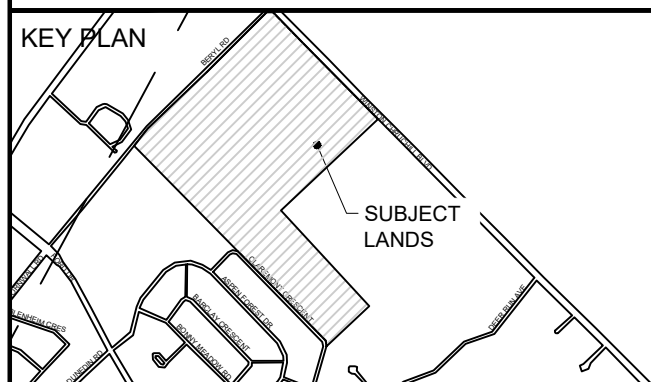
File Location: \\1133366_772_Winst7_0_Production\7_03_Design\05_Landscape\Sheet\133366_TPP.dwg
 Last Saved: May 14, 2024, by Taylor Kemp
 Plotted: Tuesday, May 14, 2024 11:02:38 AM by Taylor Kemp
 1 in

COPYRIGHT
 This drawing has been prepared solely for the intended use, thus any reproduction or distribution for any purpose other than authorized by Arcadis is forbidden. Written dimensions shall have precedence over scaled dimensions. Contractors shall verify and be responsible for all dimensions and conditions on the job, and Arcadis shall be informed of any variations from the dimensions and conditions shown on the drawing. Shop drawings shall be submitted to Arcadis for general conformance before proceeding with fabrication.

Arcadis Professional Services (Canada) Inc.
Formerly IBI Group Professional Services (Canada) Inc.

ISSUES

No.	DESCRIPTION	DATE
1	SPA SUBMISSION	2021-05-31
2	REISSUED FOR SPA	2021-11-10
3	REISSUED FOR SPA	2022-12-15
4	SANITARY EASEMENT SUBMISSION	2023-09-26
5	4th SPA SUBMISSION	2023-11-30
6	5th SPA SUBMISSION	2024-05-10



CONSULTANTS

NOT FOR CONSTRUCTION

SEAL



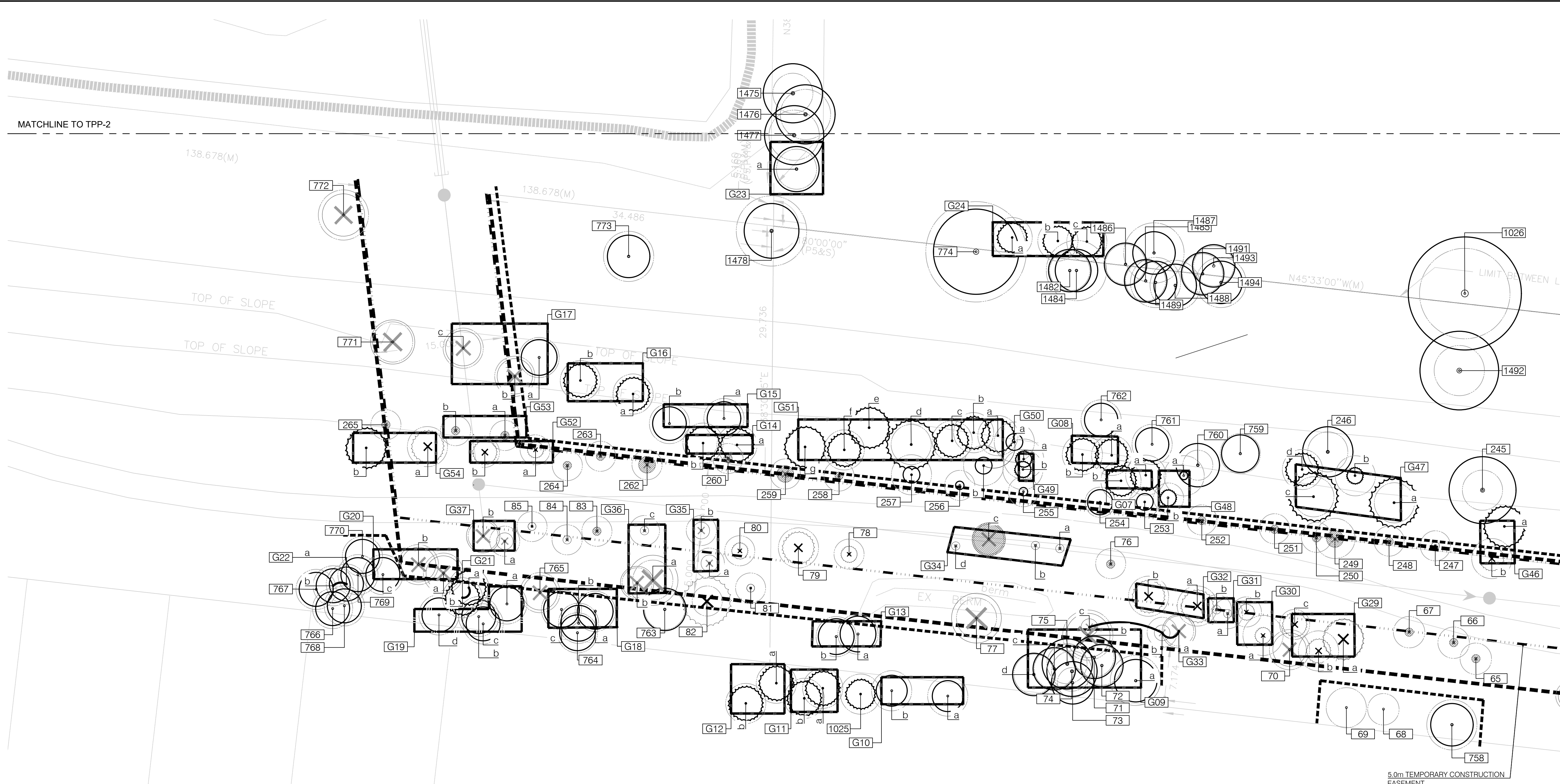
PRIME CONSULTANT
ARCADIS
 360 James Street North - Suite 200
 Hamilton ON L8L 1H5 Canada
 tel 905 546 1010
 www.arcadis.com

PROJECT
WAREHOUSE DEVELOPMENT
 772 WINSTON CHURCHILL BLVD
 OAKVILLE, ONTARIO

PROJECT NO:
 133366
DRAWN BY:
 Z. BROWN
CHECKED BY:
 T. O'BRIEN
PROJECT MGR:
 A. MINNS
APPROVED BY:
 T. O'BRIEN

SHEET TITLE
TREE PROTECTION PLAN

SHEET NUMBER
TPP-3
ISSUE
6

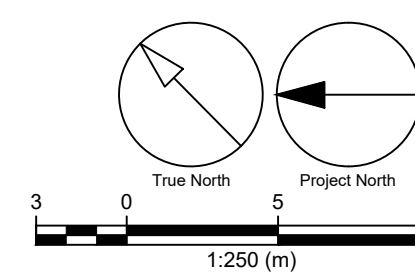


LEGEND

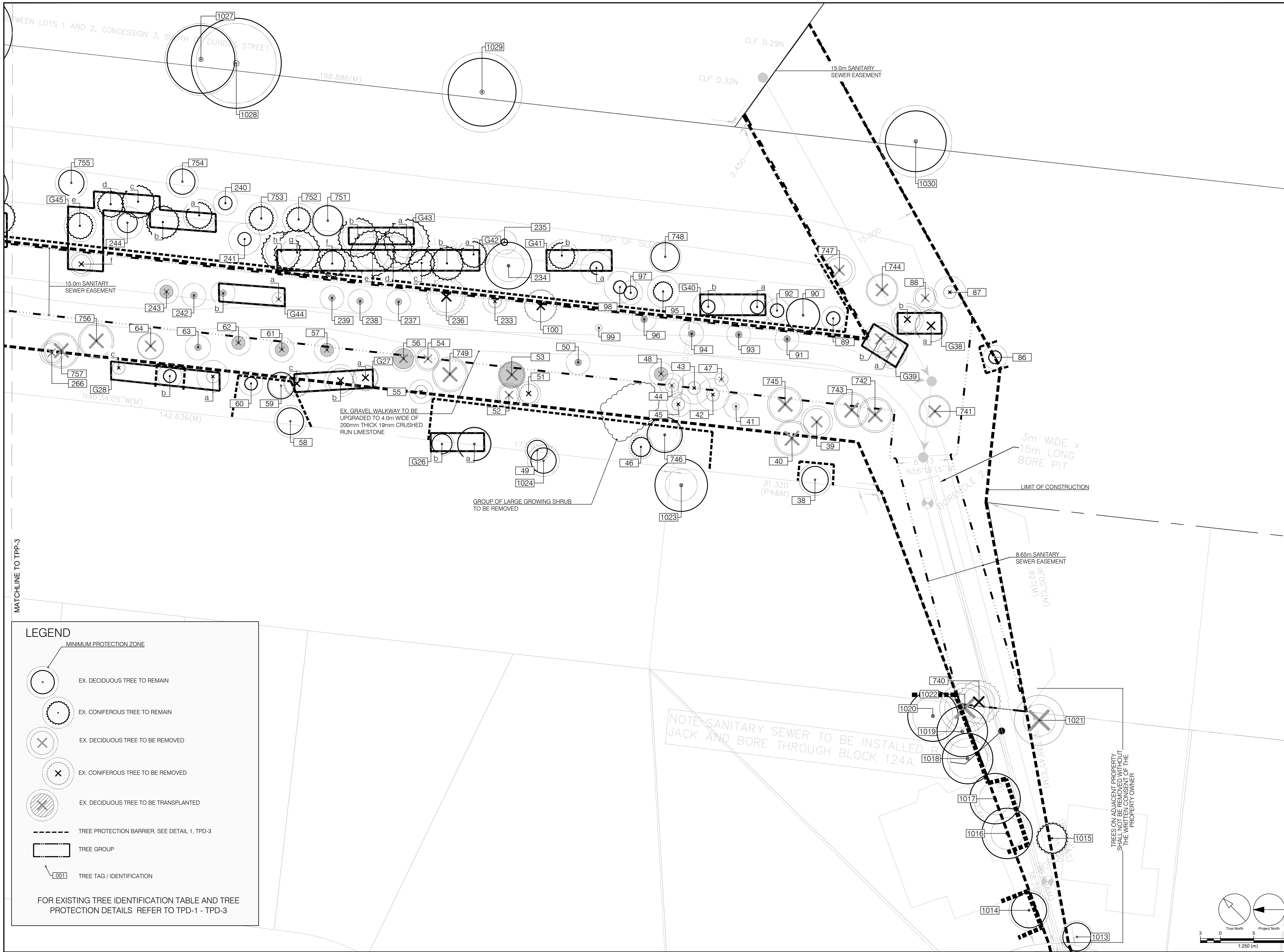
MINIMUM PROTECTION ZONE

- EX. DECIDUOUS TREE TO REMAIN
- EX. CONIFEROUS TREE TO REMAIN
- EX. DECIDUOUS TREE TO BE REMOVED
- EX. CONIFEROUS TREE TO BE REMOVED
- EX. DECIDUOUS TREE TO BE TRANSPLANTED
- TREE PROTECTION BARRIER, SEE DETAIL 1, TPD-3
- TREE GROUP
- TREE TAG / IDENTIFICATION

FOR EXISTING TREE IDENTIFICATION TABLE AND TREE PROTECTION DETAILS REFER TO TPD-1 - TPD-3



File Location: I:\133366_772_Winstn7_0_Production\7_03_Design\05_Landscape\Sheets\133366_TPP.dwg
 Last Saved: May 14, 2024, by Taylor Kemp
 Plotted: Tuesday, May 14, 2024 11:08:23 AM by Taylor Kemp
 1 in



MATCHLINE TO TPP-3

LEGEND

- MINIMUM PROTECTION ZONE
- EX. DECIDUOUS TREE TO REMAIN
- EX. CONIFEROUS TREE TO REMAIN
- EX. DECIDUOUS TREE TO BE REMOVED
- EX. CONIFEROUS TREE TO BE REMOVED
- EX. DECIDUOUS TREE TO BE TRANSPLANTED
- TREE PROTECTION BARRIER, SEE DETAIL 1, TPD-3
- TREE GROUP
- TREE TAG / IDENTIFICATION

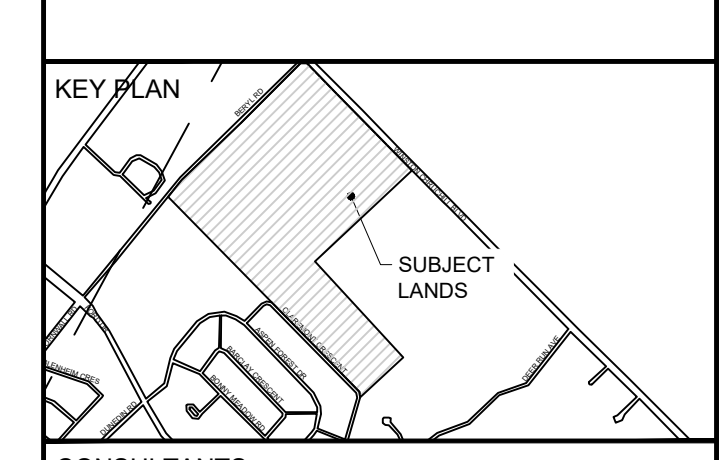
FOR EXISTING TREE IDENTIFICATION TABLE AND TREE PROTECTION DETAILS REFER TO TPD-1 - TPD-3

CLIENT
772 WINSTON CHURCHILL LIMITED PARTNERSHIP
 2710-333 BAY STREET TORONTO, ON M5H 2R2

COPYRIGHT
 This drawing has been prepared solely for the intended use, thus any reproduction or distribution for any purpose other than authorized by Arcadis is forbidden. Written dimensions shall have precedence over scaled dimensions. Contractors shall verify and be responsible for all dimensions and conditions on the job, and Arcadis shall be informed of any variations from the dimensions and conditions shown on the drawing. Shop drawings shall be submitted to Arcadis for general conformance before proceeding with fabrication.

Arcadis Professional Services (Canada) Inc.
Formerly IBI Group Professional Services (Canada) Inc.

ISSUES		
No.	DESCRIPTION	DATE
1	SPA SUBMISSION	2021-05-31
2	REISSUED FOR SPA	2021-11-10
3	REISSUED FOR SPA	2022-12-15
4	SANITARY EASEMENT SUBMISSION	2023-09-26
5	4th SPA SUBMISSION	2023-11-30
6	5th SPA SUBMISSION	2024-05-10



CONSULTANTS

NOT FOR CONSTRUCTION

SEAL

PRIME CONSULTANT
ARCADIS
 360 James Street North - Suite 200
 Hamilton ON L8L 1H5 Canada
 tel 905 546 1010
 www.arcadis.com

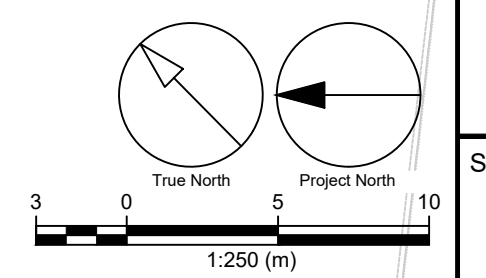
PROJECT
WAREHOUSE DEVELOPMENT
 772 WINSTON CHURCHILL BLVD
 OAKVILLE, ONTARIO

PROJECT NO:
 133366

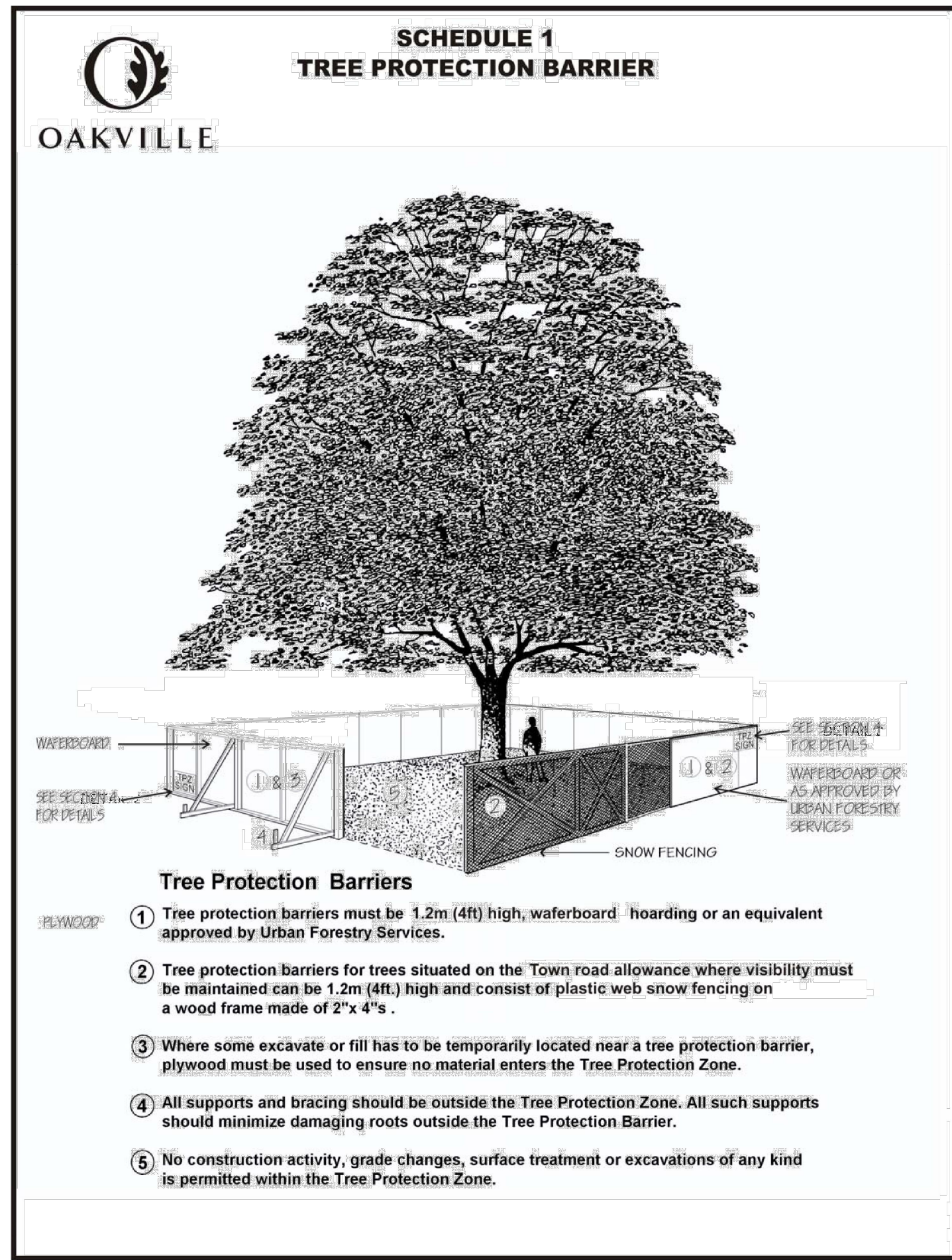
DRAWN BY: Z. BROWN	CHECKED BY: T. O'BRIEN
PROJECT MGR: A. MINNS	APPROVED BY: T. O'BRIEN

SHEET TITLE
TREE PROTECTION PLAN

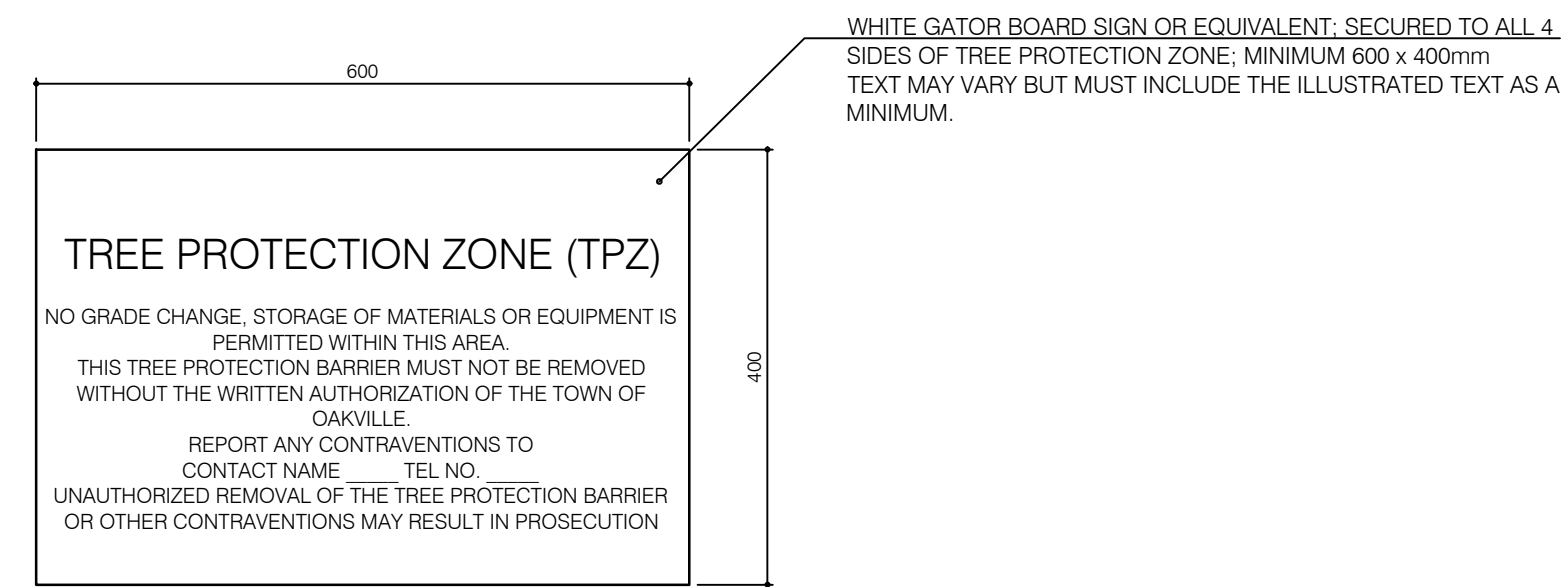
SHEET NUMBER TPP-4	ISSUE 6
------------------------------	-------------------



File Location: \\1133366_772_Winstn7_0_Production\7_03_Design\05_Landscape\Sheet\133366_TPP.dwg Last Saved: May 14, 2024, by Taylor Kemp Printed: Tuesday, May 14, 2024 11:08:57 AM by Taylor Kemp



1 TREE PROTECTION BARRIER DETAIL
TPD-3 N.T.S



2 TPZ SIGN DETAIL
TPD-3 N.T.S

Trunk Diameter (DBH) ²	Minimum Protection Distances Required ³
<10 cm	1.8 m
10-30 cm	2.4 m
31-50 cm	3.0 m
51-60 cm	3.6 m
61-70 cm	4.2 m
71-80 cm	4.8 m
81-90 cm	5.4 m
91-100 cm	6.0 m

3 MINIMUM TREE PROTECTION ZONE (MPTZ) REQUIRED
TPD-3 N.T.S

TREE PROTECTION NOTES:

- The Tree Protection Zone
The Tree Protection Zone (TPZ) is the minimum setback required to maintain the structural integrity of the tree's anchor roots, based on generally accepted arboricultural principles. If trees are protected to the TPZ then the tree's anchor root structure is expected to be maintained.
No unauthorized activities may take place within the TPZ of a tree covered under any municipal permit process or agreement. The chart (Detail 4 above) shows the TPZ. Some trees and site conditions may require a greater setback at the Town's discretion.
 - For trees over 100 cm DBH, add 10 cm. to the TPZ for every one centimetre of DBH.
 - Roots can extend from the trunk to 2-3 times the distance of the drip line (see Detail 1 for further information).
 - Diameter at breast height (DBH) measurement of tree trunk taken at 1.37 metres above ground.
 - Tree Protection Zone distances are to be measured from the outside edge of the tree base towards the drip line and may be limited by an existing paved surface, provided the existing paved surface remains intact throughout the construction work.
- Tree Protection Barriers
Trees within or adjacent to a construction site must be protected during construction by means of a barrier installed in accordance with the table in section 1 and meet the following specifications:
 - Tree protection barriers must be erected prior to the commencement of any construction activity that may injure a tree on the site and are to remain in place throughout the entire duration of the project. The applicant shall notify the appropriate Town department in writing prior to commencing any such activities to confirm that the tree protection barriers are in place.
 - The tree protection barriers specified herein must remain in a condition satisfactory to the Town until all site activities including landscaping are complete.
 - Authorization from the appropriate Town department must be obtained prior to the removal of tree protection barriers.
 - If some fill or excavated material must be temporarily located near the tree protection barrier, a wooden barrier must be used to ensure no material enters the TPZ.
 - A sign, provided by the Town that is similar to the illustration above (Detail 2) will be paid for by the application and mounted on one side of a tree protection barrier for the duration of the project.
- Tree protection permit and/or agreement - authorization from the town
For trees covered under this procedure, written authorization from the town is required in the form of either a Tree Protection Agreement, or a Tree Protection Zone Encroachment Permit or a Tree Permit, and the applicant is required to have a town approved tree service raise the crown of all branches to provide adequate clearance for construction equipment.
 - Tree Protection Agreement (TPA): The applicant is required to enter into a Tree Protection Agreement when construction activities take place outside of the TPZ area as determined by Town Forester or designate. Should the town determine that a tree protection agreement is required, a tree protection agreement fee shall be charged to the applicant in accordance with the established town fees.
 - Tree Protection Zone Encroachment Permit (TPZEP) - Schedule 2 (Application)
 - It is recognized that there are cases where existing or proposed utilities, capital infrastructure or buildings are located within the TPZ of a tree impacted by construction. The expectation is for the project design to respect the TPZ, however, in cases where the proposed construction impacts the area within the TPZ, the applicant shall demonstrate, with appropriate supporting documentation, that the impact on the structural integrity of the anchor roots will be within acceptable limits to avoid creating a hazardous tree.
 - A Tree Protection Zone Encroachment Permit is required when construction activities take place within the TPZ. An Application for TPZEP must be submitted to the Town of Oakville prior to anticipated construction start date. No other permit, agreement and/or consent issued by the Town authorizes working inside the tree protection zone of a Town Tree.
 - An arborist must be present on site at all times when work is within the TPZ. The schedule of inspections must comply with Section 7 set out herein. Above ground clearance for overhanging branches in the work zone must be taken into consideration. The applicant is required to have a Town approved tree service raise the crown of all branches to provide adequate clearance for construction equipment.
 - The Town specifies the non-invasive methods of excavation including but not limited to air spade, hydro vac, hand digging to minimize the damage to the health and structure of the trees.
 - Root pruning in open trench methods of construction is required under the direction of - and along with - written approval of an arborist. The objective is to minimize severance of anchor roots, which provide upright support for the tree, thereby minimizing potential hazards.
 - Emergency repairs due to underground utilities are permitted to commence immediately. However, the utility company concerned is responsible for notifying the Town as soon as possible when Town trees are involved.
 - Tree Permit (TP): Where the impact on the structural integrity of anchor roots is beyond acceptable limits and may cause a hazardous tree:
 - the tree may be removed in accordance with the applicable by-law, or
 - in the case of a town tree, the applicant shall bear the cost of the tree and stump removal as well as payment of the amenity value of the tree as calculated in accordance with the most recent International Society of Arboriculture's Guide for Plan Appraisal.
- Compliance with this procedure
Failure to comply with this procedure may result in one or more of the following:
 - An Order to Comply
 - Loss of security in whole or in part
 - Prosecution under an applicable by-law
 - Additional remedial costs as determined by the town

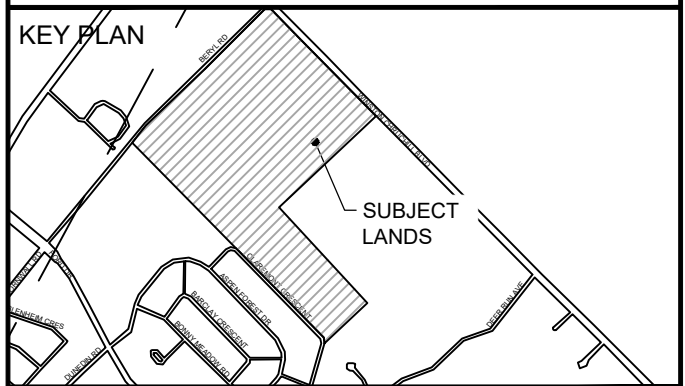
4 TREE PROTECTION NOTES (from EN-TRE-001-001)
TPD-3 N.T.S

CLIENT
**772 WINSTON
CHURCHILL LIMITED
PARTNERSHIP**
2710-333 BAY STREET TORONTO, ON
M5H 2R2

COPYRIGHT
This drawing has been prepared solely for the intended use, thus any reproduction or distribution for any purpose other than authorized by Arcadis is forbidden. Written dimensions shall have precedence over scaled dimensions. Contractors shall verify and be responsible for all dimensions and conditions on the job, and Arcadis shall be informed of any variations from the dimensions and conditions shown on the drawing. Shop drawings shall be submitted to Arcadis for general conformance before proceeding with fabrication.

Arcadis Professional Services (Canada) Inc.
Formerly B Group Professional Services (Canada) Inc.

No.	DESCRIPTION	DATE
1	SPA SUBMISSION	2021-05-31
2	REISSUED FOR SPA	2021-11-10
3	REISSUED FOR SPA	2022-12-15
4	SANITARY EASEMENT SUBMISSION	2023-09-26
5	4th SPA SUBMISSION	2023-11-30
6	5th SPA SUBMISSION	2024-05-10



CONSULTANTS

NOT FOR CONSTRUCTION



PRIME CONSULTANT
ARCADIS
360 James Street North - Suite 200
Hamilton ON L8L 1H5 Canada
tel 905 546 1010
www.arcadis.com

PROJECT
WAREHOUSE DEVELOPMENT
772 WINSTON CHURCHILL BOULEVARD
OAKVILLE, ONTARIO

PROJECT NO:
123558
DRAWN BY: ZARA BROWN
PROJECT MGR: ASHLEY MINNS
CHECKED BY: TIM O'BRIEN
APPROVED BY: TIM O'BRIEN

SHEET TITLE
TREE PROTECTION DETAILS

SHEET NUMBER
TPD-3
ISSUE
6