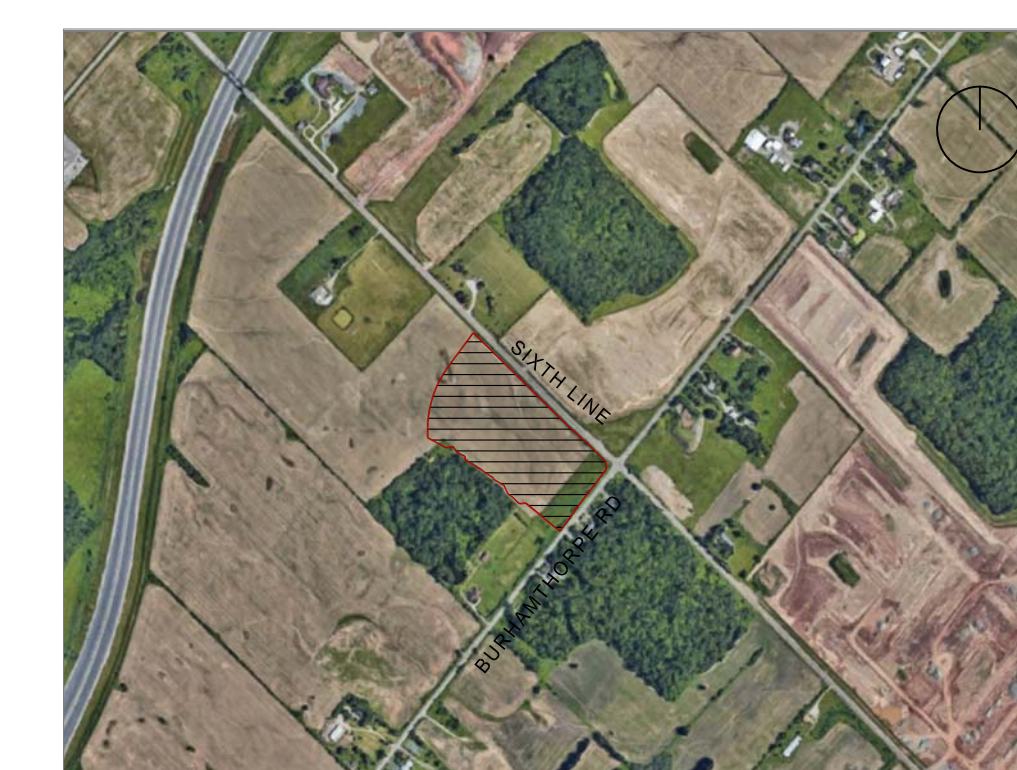


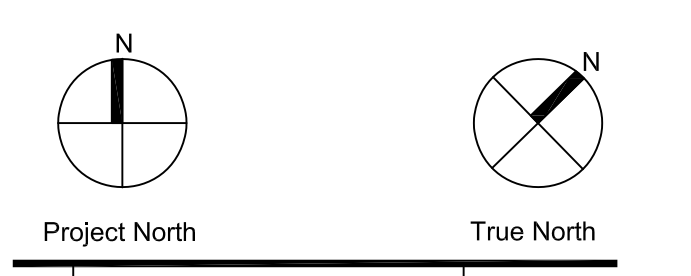
1 SITE PLAN
A101 1:500



2 AERIAL IMAGE OF SITE
A101 NTS

SITE STATISTICS	
Lot Area	6.14 Ha / 61445.1 m ²
Lot Frontage	155 m
Bldg Area (School+Fieldhouse)	6395 m ²
Lot Coverage (School+Fieldhouse)	9.9%
School Building	
Front Yard setback-South (m)	7.58
Flankage yard setback-East (m)	20.86
Int Side Yard setback-West (m)	46.58
Rear Yard setback-North (m)	221.3
Future Sports Dome	
Flankage yard setback-East (m)	20.95
Int Side Yard setback-West (m)	31.87
Rear Yard setback-North (m)	13.15
Established grade (m)	188.97
PARKING STATISTICS	
Total spaces	205
Barrier free spaces	8
Surface Parking Flankage setback	3 m
Surface Parking Int side yard setback	3.8 m
Bike Parking Spaces	54
BUILDING STATISTICS	
School Building	
GFA	14373 m ²
High School - Classrooms	71
(Includes 18 future portables)	
Number of storeys	3 + 1 lower storey
Building Ht from Established grade	16.3 m
Childcare GFA (incl in school GFA)	759 m ²
Childcare licensed spaces	88
Fieldhouse (Future Development)	
GFA	286 m ²
Number of storeys	1
Building Ht from Established grade	8.63m
Sports Dome (Future Development)	
GFA	8235 m ²
Building Ht from Established grade	28.53 m

ESTABLISHED GRADE CALCULATION
(BASED ON RAND ENG DWG RCD 2023 11 02)
MID-PT OF E LOT LINE (SIXTH LINE) = 192.27
MID-PT OF S LOT LINE (BURHAMTHORPE RD) = 185.57
ESTB GRADE = 188.97



No.	Revisions	Date
2.	Issued for SPA Re-Submission	2024 01 17
1.	Issued for SPA Submission	2022 05 15

General Contractor shall check and verify all dimensions and report all errors and omissions to the architect. Do not scale the drawings. Drawings shall not be used for construction purposes until issued by the Architect for construction.

Drawing Title:

SITE PLAN

Scale: 1:500 Date: 2022 12 19

Drawn by: AG Checked by: AG

Job No. Drawing No.

2201 A101

This drawing is issued for 30x40 inch size. If not the above size, interpret the drawing accordingly.