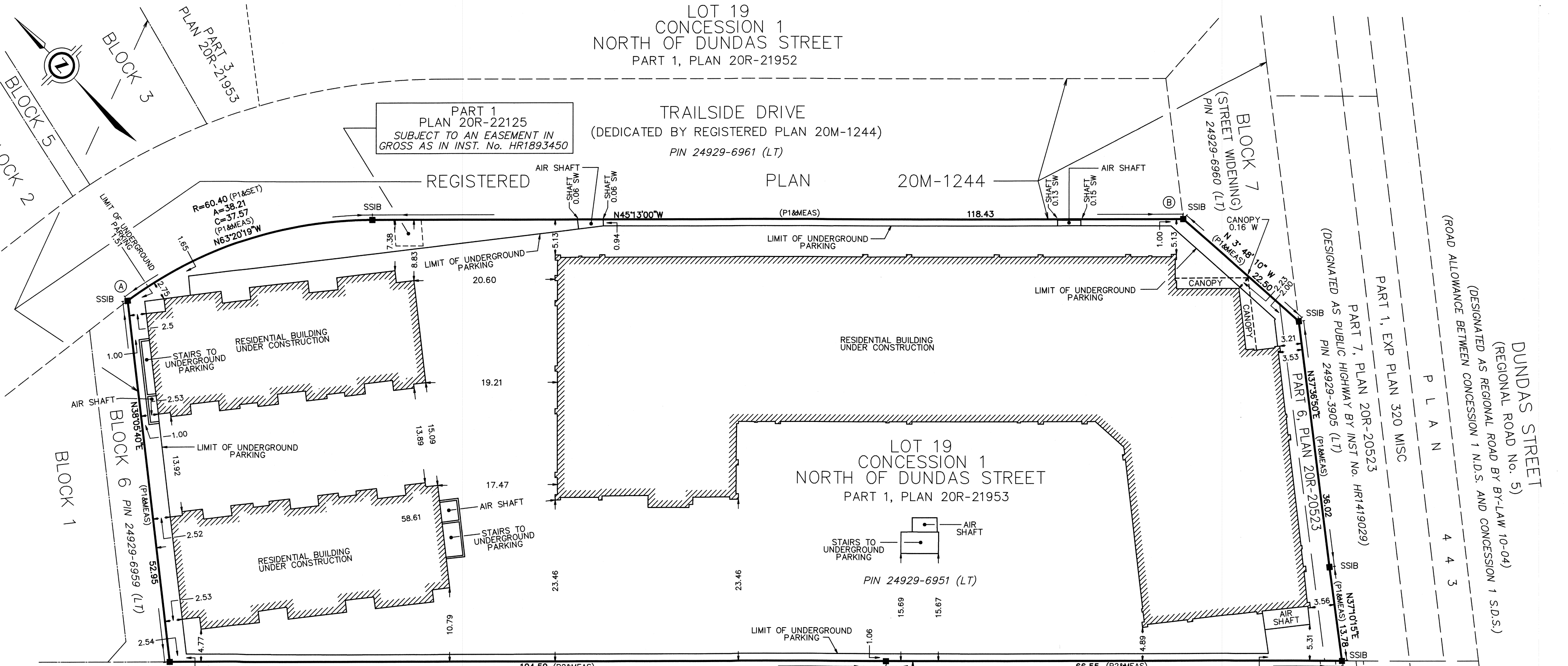


LOT 19  
CONCESSION 1  
NORTH OF DUNDAS STREET  
PART 1, PLAN 20R-21952



PLAN OF SURVEY OF  
**PART OF LOT 19, CONCESSION 1  
NORTH OF DUNDAS STREET**  
GEOGRAPHIC TOWNSHIP OF TRAFALGAR  
TOWN OF OAKVILLE  
REGIONAL MUNICIPALITY OF HALTON

SCALE 1 : 400  
0 10 20 30 metres

THE INTENDED PLOT SIZE OF THIS PLAN IS 762mm IN WIDTH BY 356mm IN HEIGHT WHEN PLOTTED AT A SCALE OF 1:400

J.D. BARNES LIMITED  
© COPYRIGHT

**METRIC** DISTANCES AND COORDINATES SHOWN ON THIS PLAN ARE IN METRES AND CAN BE CONVERTED TO FEET BY DIVIDING BY 0.3048.

- LEGEND**
- DENOTES SURVEY MONUMENT FOUND
  - DENOTES SURVEY MONUMENT SET
  - SIB DENOTES STANDARD IRON BAR
  - SSIB DENOTES SHORT STANDARD IRON BAR
  - IB DENOTES IRON BAR
  - MEAS DENOTES MEASURED
  - P1 DENOTES REGISTERED PLAN 20M-1244
  - P2 DENOTES PLAN 20R-21952
  - RPE DENOTES RADY-PENTEK & EDWARD SURVEYING LTD.
  - N=NORTH / S=SOUTH / E=EAST / W=WEST

ALL FOUND SURVEY MONUMENTS ARE J.D. BARNES LTD., UNLESS OTHERWISE NOTED.

**ASSOCIATION OF ONTARIO  
LAND SURVEYORS  
PLAN SUBMISSION FORM  
2194775**

**THIS PLAN IS NOT VALID  
UNLESS IT IS AN EMBOSSED  
ORIGINAL COPY  
ISSUED BY THE SURVEYOR  
In accordance with  
Regulation 1026, Section 29(3).**

**SURVEYOR'S CERTIFICATE**

- I CERTIFY THAT:
- THIS SURVEY AND PLAN ARE CORRECT AND IN ACCORDANCE WITH THE SURVEYS ACT, THE SURVEYORS ACT AND THE REGULATIONS MADE UNDER THEM.
  - THE SURVEY WAS COMPLETED ON JULY 12th, 2022.

JULY 14, 2022  
DATE

*R.S. Querubin*  
R.S. QUERUBIN  
ONTARIO LAND SURVEYOR

**J.D. BARNES LIMITED**  
LAND INFORMATION SPECIALISTS  
401 WHEELABRATOR WAY, SUITE A, MILTON, ON L9T 3C1  
T: (905) 875-9955 F: (905) 875-9956 www.jdbarnes.com

**SURVEYING  
MAPPING  
GIS**

DRAWN BY: ML CHECKED BY: RSQ REFERENCE NO.: 17-30-127-15-A  
PLOTTED: 2022-07-14 DATED: JULY 12, 2022

**NOTES**

BEARINGS ARE UM GRID, DERIVED FROM OBSERVED REFERENCE POINTS A AND B, BY REAL TIME NETWORK (RTN) OBSERVATIONS, UM ZONE 17 NAD83 (CSRS) (2010.0).

DISTANCES ARE GROUND AND CAN BE CONVERTED TO GRID BY MULTIPLYING BY THE COMBINED SCALE FACTOR OF 0.999708.

**INTEGRATION DATA**

| POINT ID | EASTING    | NORTHING     |
|----------|------------|--------------|
| ORP (A)  | 601 658.45 | 4 813 702.29 |
| ORP (B)  | 601 776.05 | 4 813 602.03 |

COORDINATES CANNOT, IN THEMSELVES, BE USED TO RE-ESTABLISH CORNERS OR BOUNDARIES SHOWN ON THIS PLAN.

THE RESULTANT TIE BETWEEN ORP (A) AND ORP (B) IS 154.58 N 49°33'05" W