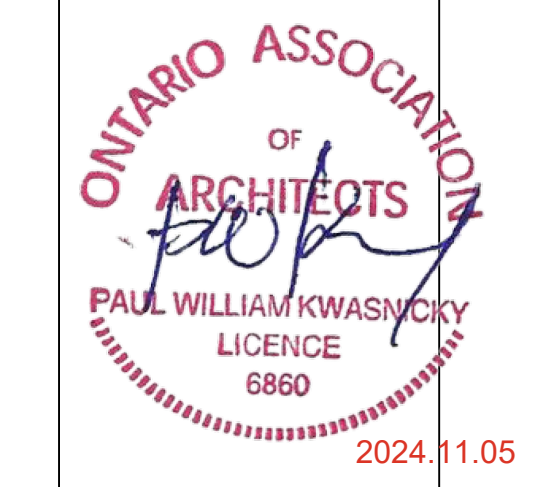
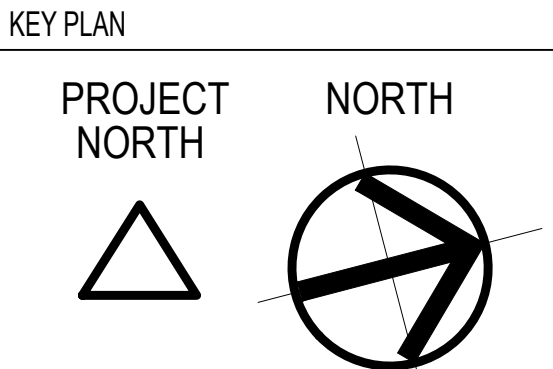
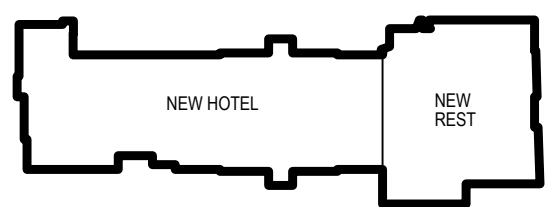


The drawings and documents are the property of Pacific Coast Architecture Inc. and shall not be reproduced in any manner without written consent. We warrant that the drawings and documents are the property of Pacific Coast Architecture Inc. and shall not be reproduced in any manner without written consent. We warrant that the drawings and documents are the property of Pacific Coast Architecture Inc. and shall not be reproduced in any manner without written consent.



3	REVISED PER CITY COMMENTS	11.01.2024
2	ISSUED FOR SITE PLAN PREAPPLICATION	-
1	ISSUED FOR PRE-CONSULTATION	08.23.2023
No.	Revision/Issue	Date
		mm.dd.yyyy

Pacific Coast
Architecture Inc.
501-3292 Production Way
Burnaby, B.C.
Canada, V5A 3K3
office: 604-349-8515

PROPOSED SIGNATURE HOTEL
SHERWOOD HEIGHTS DRIVE
OAKVILLE EAST ONTARIO

HOTEL WEST ELEVATION

Scale: 1/8" = 1'-0"

Date: May 16th, 2024

Drawn: J.Mutis

Checked: -

DP-2.01

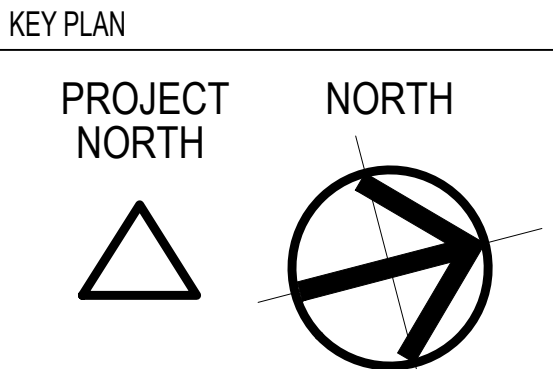
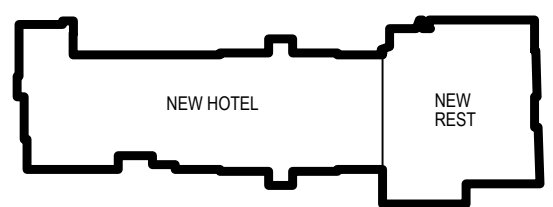
R2



1 HOTEL NORTH ELEVATION
SCALE: 1/8" = 1'-0"

OAKVILLE EAST EXTERIOR FINISHES		
HOTEL FINISHES		RESTAURANT FINISHES
H1 HARDIPANELS C/W REVEALS 'PEARL GRAY'	H12 METAL CAP FLASHING PAINTED COLOR TO MATCH SURROUNDING WALL	M1 FEATURE ENTRY METAL DOOR ON PIVOTING HARDWARE
H2 HARDIPANELS C/W REVEALS 'AGED PEWTER'	H13 SANDBLASTED CONCRETE FINISH	M2 METAL PANEL CLADDING COLOR: 'REGAL WHITE'
H3 BRICK VENEER SYSTEM - RUNNING BOND COLOR: 'LIGHT BROWN'	H14 'C' CHANNEL AWNING PAINTED 'BLACK JACK' 2133-20	M3 WOOD GRAIN PATTERN METAL SIDING COLOR: '140601-716 LIGHT CHERRY' OR EQUIVALENT
H4 BRICK VENEER SYSTEM - RUNNING BOND COLOR: 'IRONSTONE' MD 2140	H15 LUXLAP V-GROOVE STEEL WOODGRAIN PATTERN COLOR 'SUEDE' OR EQUIVALENT	M4 'CLOUD GRAY' TINTED GLAZING IN BLACK POWDER-COATED ALUMINUM WINDOW FRAMES
H5 CLEAR GLASS WINDOW IN BLACK ALUMINUM FRAME		M5 SURFACE MOUNTED UP LIGHT
H6 CLEAR GLAZED DOOR IN BLACK ALUM FRAME		M6 DECORATIVE OUTDOOR RAILING COLOR: 'BLACK'
H7 DOWN LIGHT *TO CONFORM WITH 'DARK NIGHT SKY' REQUIREMENTS*		M7 MULTI-SLIDE GLASS WALL SYSTEM WITH BLACK POWDER COATED ALUMINUM FRAMEWORK
H8 ILLUMINATED SIGNAGE		M8 'STARLIGHT' FIXTURE
H9 A/C UNIT OR EXHAUST COVERS PAINTED TO MATCH SURROUNDING WALL		M9 SANDBLASTED CONCRETE FINISH
H10 DOOR PAINTED TO MATCH SURROUNDING WALL		M10 'C' CHANNEL AWNING PAINTED 'BLACK JACK' 2133-20
H11 PAINTED HARDIPANELS C/W REVEALS BENJAMIN MOORE BLACK JACK 2133-20		M11 STEEL CHANNEL SECTION PAINTED 'BLACK JACK' 2133-20

The drawings and documents are and shall be, all in respect of the property of Pacific Coast Architecture Inc. and shall be used or reproduced in any manner without written consent. We warrant that the drawings and documents are true and correct as of the date of issue and that the drawings and documents shall be used for the purposes intended and that the drawings and documents shall be used for the purposes intended and that the drawings and documents shall be used for the purposes intended.



No.	Revision/Issue	Date
3	REVISED PER CITY COMMENTS	11.01.2024
2	ISSUED FOR SITE PLAN PREAPPLICATION	-
1	ISSUED FOR PRE-CONSULTATION	08.23.2023

Pacific Coast
Architecture Inc.
501-3292 Production Way
Burnaby, B.C.
Canada V5A 3K3
office: 604-349-8515

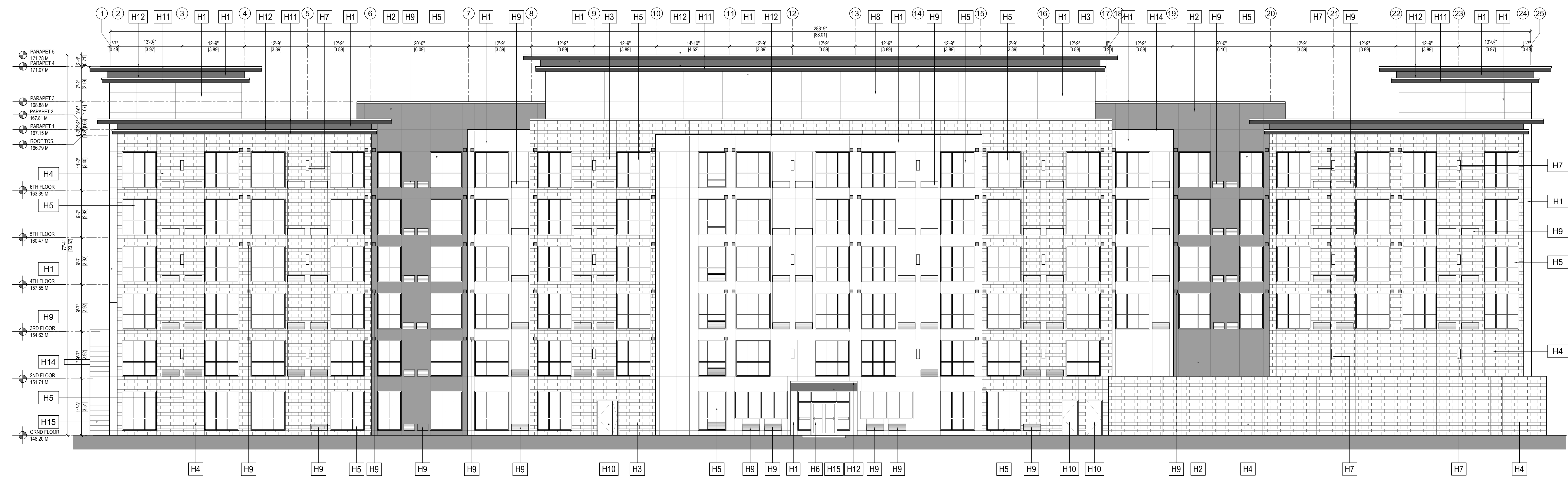
PROPOSED SIGNATURE HOTEL
SHERWOOD HEIGHTS DRIVE
OAKVILLE EAST ONTARIO

HOTEL EAST ELEVATION

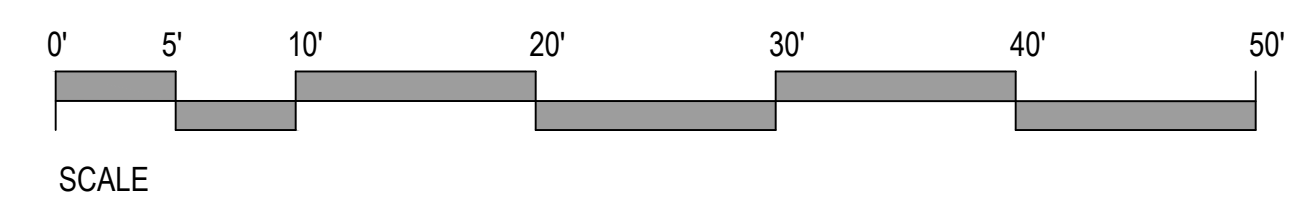
Scale: 1/8" = 1'-0"
Date: May 16th, 2024
Drawn: J.Mutis
Checked: -

DP-2.02

R2

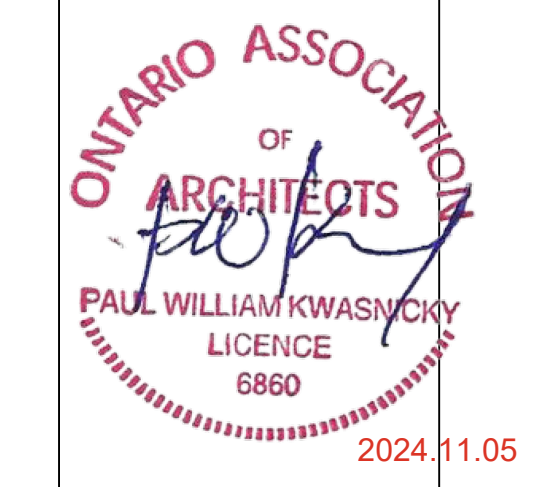
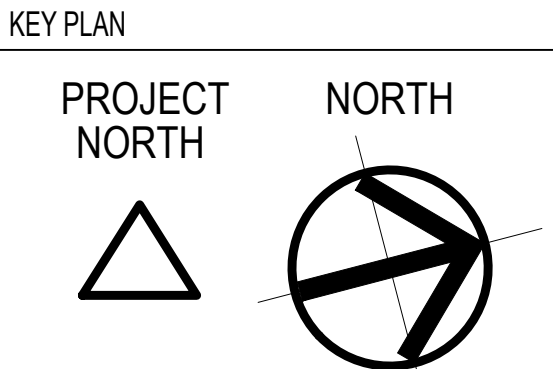
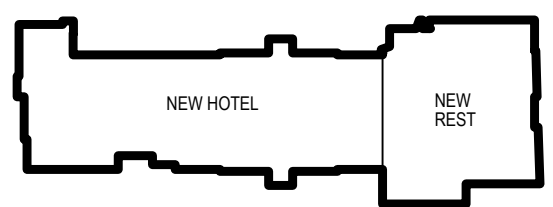


HOTEL SOUTH ELEVATION
SCALE: 1/8" = 1'-0"



OAKVILLE EAST EXTERIOR FINISHES		
HOTEL FINISHES		RESTAURANT FINISHES
H1 HARDIPANELS C/W REVEALS 'PEARL GRAY'	H12 METAL CAP FLASHING PAINTED COLOR TO MATCH SURROUNDING WALL	M1 FEATURE ENTRY METAL DOOR ON PIVOTING HARDWARE
H2 HARDIPANELS C/W REVEALS 'AGED PEWTER'	H13 SANDBLASTED CONCRETE FINISH	M2 METAL PANEL CLADDING COLOR: 'REGAL WHITE'
H3 BRICK VENEER SYSTEM - RUNNING BOND COLOR: 'LIGHT BROWN'	H14 'C' CHANNEL AWNING PAINTED 'BLACK JACK' 2133-20	M3 WOOD GRAIN PATTERN METAL SIDING COLOR: '1406/01-716 LIGHT CHERRY' OR EQUIVALENT
H4 BRICK VENEER SYSTEM - RUNNING BOND COLOR: 'IRONSTONE' MD 2140	H15 LUXLAP V-GROOVE STEEL WOODGRAIN PATTERN COLOR 'SUEDE' OR EQUIVALENT	M4 'CLOUD GRAY' TINTED GLAZING IN BLACK POWDER-COATED ALUMINUM WINDOW FRAMES
H5 CLEAR GLASS WINDOW IN BLACK ALUMINUM FRAME		M5 SURFACE MOUNTED UP LIGHT
H6 CLEAR GLAZED DOOR IN BLACK ALUM FRAME		M6 DECORATIVE OUTDOOR RAILING COLOR: 'BLACK'
H7 DOWN LIGHT <i>*TO CONFORM WITH 'DARK NIGHT SKY' REQUIREMENTS*</i>		M7 MULTI-SLIDE GLASS WALL SYSTEM WITH BLACK POWDER COATED ALUMINUM FRAMEWORK
H8 ILLUMINATED SIGNAGE		M8 'STARLIGHT' FIXTURE
H9 A/C UNIT OR EXHAUST COVERS PAINTED TO MATCH SURROUNDING WALL		M9 SANDBLASTED CONCRETE FINISH
H10 DOOR PAINTED TO MATCH SURROUNDING WALL		M10 'C' CHANNEL AWNING PAINTED 'BLACK JACK' 2133-20
H11 PAINTED HARDIPANELS C/W REVEALS BENJAMIN MOORE BLACK JACK 2133-20		M11 STEEL CHANNEL SECTION PAINTED 'BLACK JACK' 2133-20

The drawings and details are and shall be the property of Pacific Coast Architecture Inc. and shall be used or reproduced in any manner without written consent. We have dimensions shall have precedence over verbal dimensions. Contractors shall verify and be responsible for dimensions and conditions in the field and any variations shall be referred to any variations from the dimensions and conditions are shown on the drawings.



3	REVISED PER CITY COMMENTS	11.01.2024
2	ISSUED FOR SITE-PLAN PREAPPLICATION	-
1	ISSUED FOR PRE-CONSULTATION	08.23.2023
No.	Revision/Issue	Date
		mm.dd.yyyy

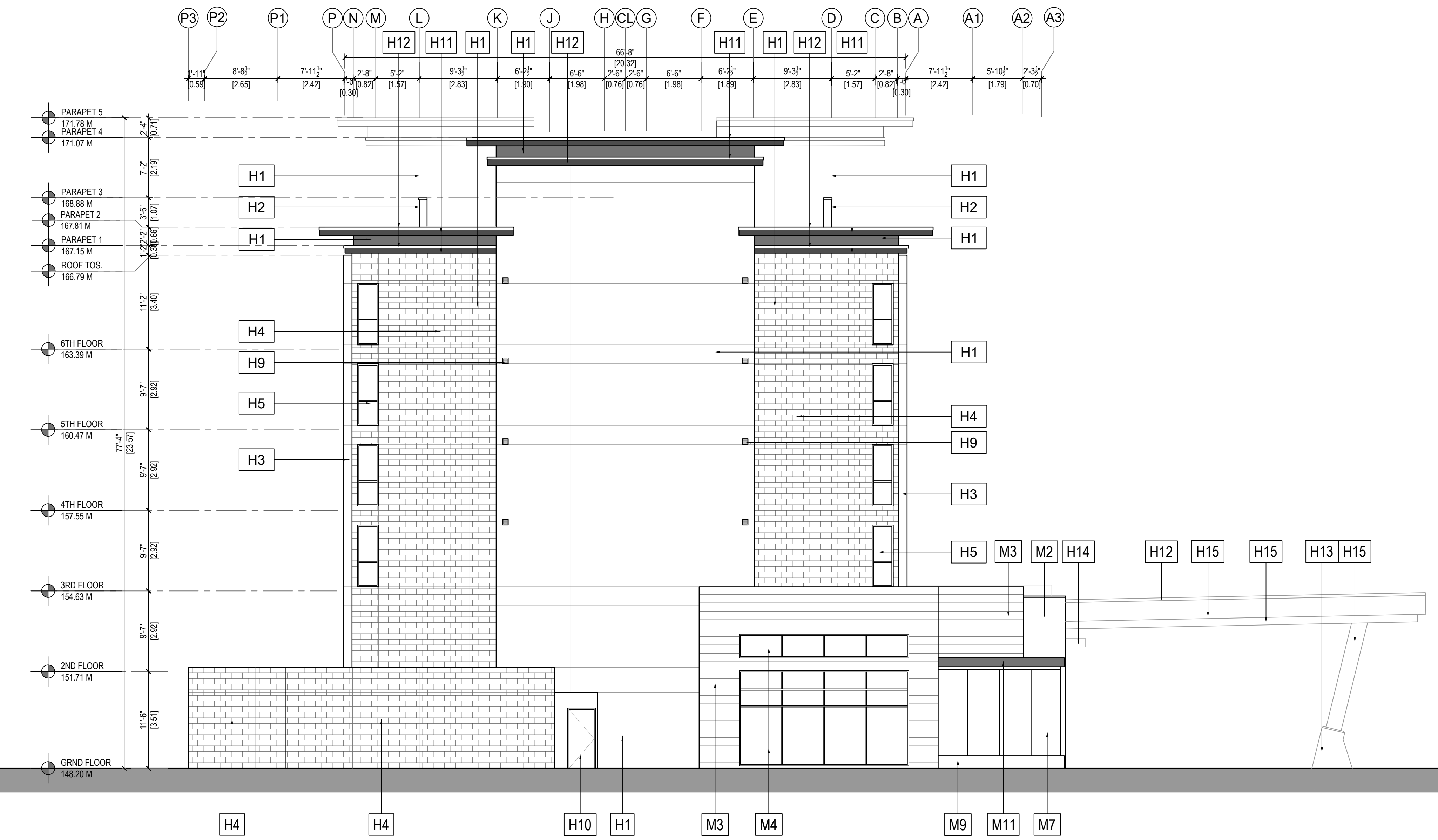
Pacific Coast
Architecture Inc.
501-3292 Production Way
Burnaby, B.C.
Canada V5A 3K3
office 604-349-8515

PROPOSED SIGNATURE HOTEL
SHERWOOD HEIGHTS DRIVE
OAKVILLE EAST ONTARIO

HOTEL NORTH & SOUTH ELEVATIONS

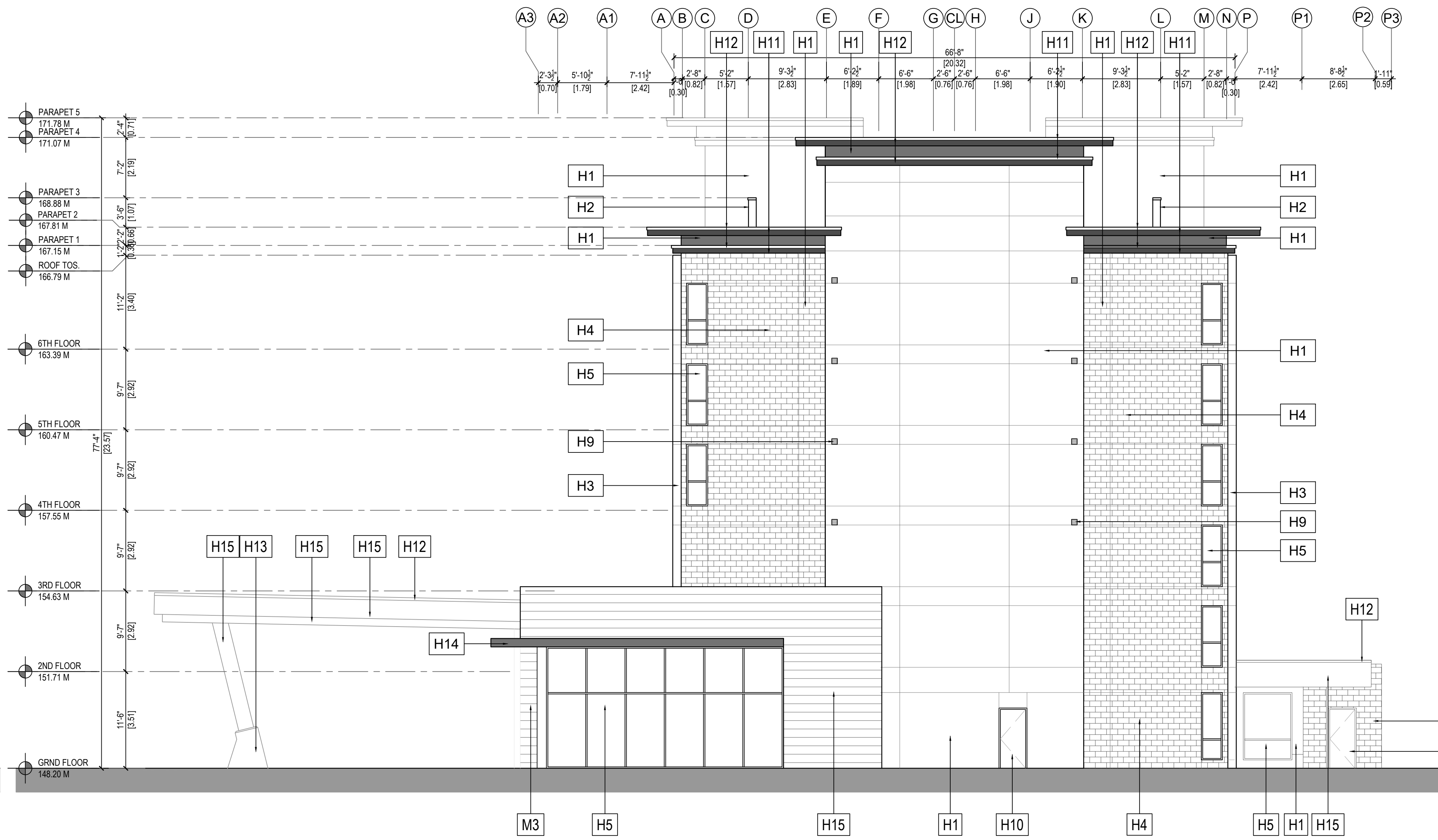
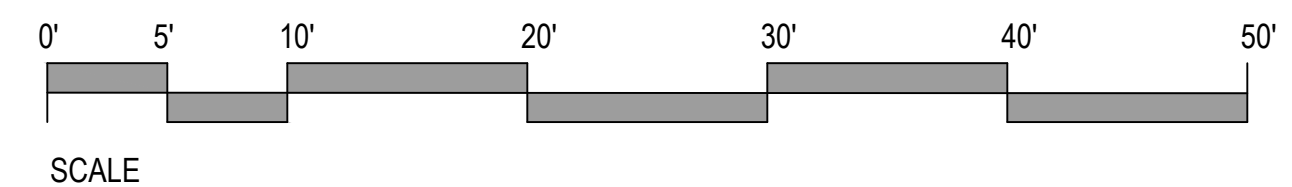
Scale 1/8" = 1'-0"
Date May 16th, 2024
Drawn J.Mutis
Checked -

DP-2.03
R2



1 HOTEL EAST ELEVATION

SCALE: 1/8" = 1'-0"



2 HOTEL WEST ELEVATION

SCALE: 1/8" = 1'-0"

OAKVILLE EAST EXTERIOR FINISHES		
HOTEL FINISHES		RESTAURANT FINISHES
H1 HARDPANELS C/W REVEALS 'PEARL GRAY'	H12 METAL CAP FLASHING PAINTED COLOR TO MATCH SURROUNDING WALL	M1 FEATURE ENTRY METAL DOOR ON PIVOTING HARDWARE
H2 HARDPANELS C/W REVEALS 'AGED PEWTER'	H13 SANDBLASTED CONCRETE FINISH	M2 METAL PANEL CLADDING COLOR: 'REGAL WHITE'
H3 BRICK VENEER SYSTEM - RUNNING BOND COLOR: 'LIGHT BROWN'	H14 'C' CHANNEL AWNING PAINTED 'BLACK JACK' 2133-20	M3 WOOD GRAIN PATTERN METAL SIDING COLOR: '140601-716 LIGHT CHERRY' OR EQUIVALENT
H4 BRICK VENEER SYSTEM - RUNNING BOND COLOR: 'IRONSTONE' MD 2140	H15 LUXLAP V-GROOVE STEEL WOODGRAIN PATTERN COLOR: 'SUEDE' OR EQUIVALENT	M4 "CLOUD GRAY" TINTED GLAZING IN BLACK POWDER-COATED ALUMINUM WINDOW FRAMES
H5 CLEAR GLASS WINDOW IN BLACK ALUMINUM FRAME		M5 SURFACE MOUNTED UP LIGHT
H6 CLEAR GLAZED DOOR IN BLACK ALUM FRAME		M6 DECORATIVE OUTDOOR RAILING COLOR: 'BLACK'
H7 DOWN LIGHT *TO CONFORM WITH 'DARK NIGHT SKY' REQUIREMENTS*		M7 MULTI-SLIDE GLASS WALL SYSTEM WITH BLACK POWDER COATED ALUMINUM FRAMEWORK
H8 ILLUMINATED SIGNAGE		M8 'STARLIGHT' FIXTURE
H9 A/C UNIT OR EXHAUST COVERS PAINTED TO MATCH SURROUNDING WALL		M9 SANDBLASTED CONCRETE FINISH
H10 DOOR PAINTED TO MATCH SURROUNDING WALL		M10 'C' CHANNEL AWNING PAINTED 'BLACK JACK' 2133-20
H11 PAINTED HARDPANELS C/W REVEALS BENJAMIN MOORE BLACK JACK 2133-20		M11 STEEL CHANNEL SECTION PAINTED 'BLACK JACK' 2133-20