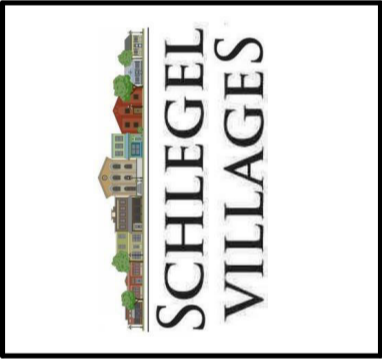


102-320 Thames St. London ON Canada N6A 0E1
 P. 519 432 6644 F. 519 432 6737
 cornerstonearchitecture.ca

© 2024 Cornerstone Architecture Incorporated. All Rights Reserved.

CORNERSTONE
 A R C H I T E C T U R E

Issued for ALTC Preliminary Design ReSubmission
 2024-01-12
 Issued for Site Plan Application
 2024-01-18
 Issued for Final Design Approval Submission #3
 2024-09-30



Schlegel Villages Oakville LTC
 2150 William Hallon Parkway W., Oakville, ON

SCHLEGEL VILLAGES
 Project No.: 835
 Drawn By: JVO
 Plot Date: 2024-10-02
 YYYY-MM-DD

EXTERIOR ELEVATIONS



1 NORTH ELEVATION
 P-08
 0 2 5 10m
 1:200 WHEN PLOTTED ON A1 SHEET SIZE



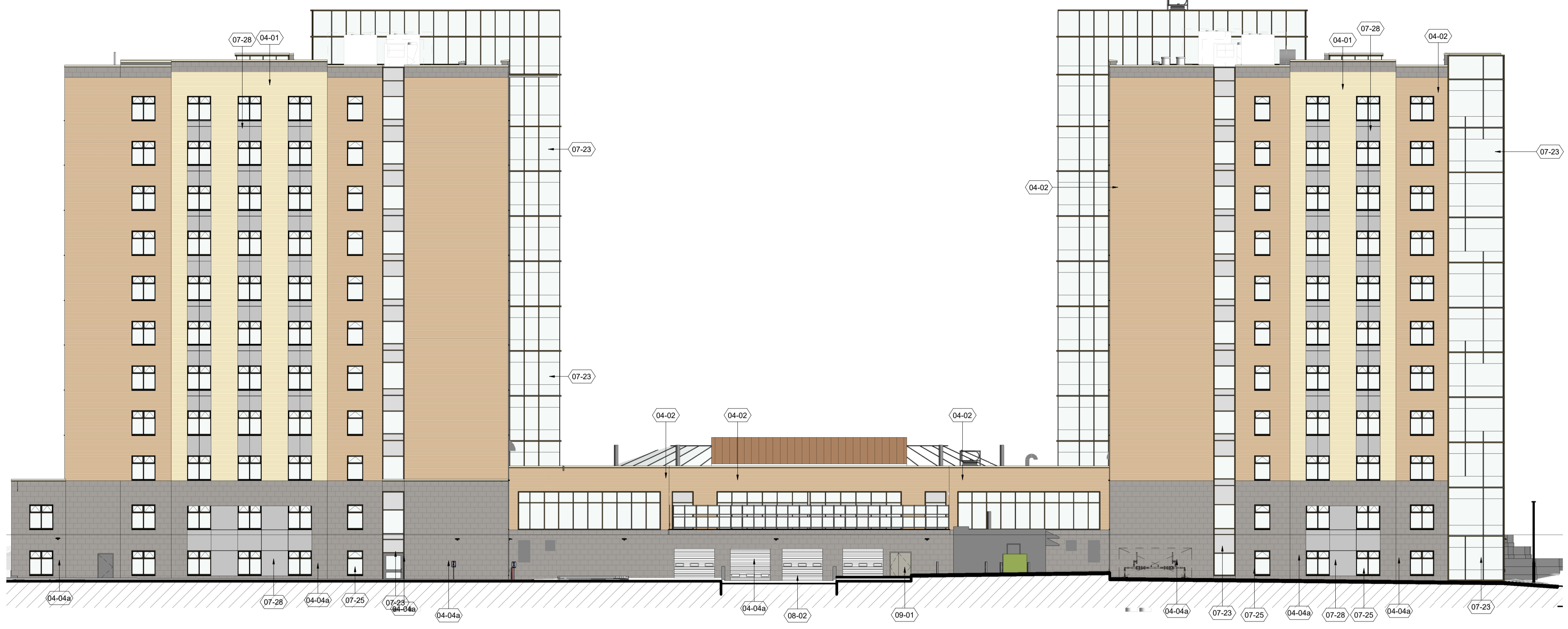
2 EAST ELEVATION
 P-08
 0 2 5 10m
 1:200 WHEN PLOTTED ON A1 SHEET SIZE

TAG	MATERIAL DESCRIPTION	TAG	MATERIAL DESCRIPTION	TAG	MATERIAL DESCRIPTION	EXTERIOR ELEVATIONS GENERAL NOTES, ABBREVIATIONS & LEGEND			
04-01	BRICK VENEER TYPE 1	08-02	OVERHEAD INSULATED GARAGE DOOR	AS-06	TPO FLAT ROOF ON METAL DECK (MECHANICALLY FASTENED)	GLAZING	VERTICAL SLIDER	WINDOW TYPE - SEE EXTERIOR ELEVATIONS & WINDOW SCHEDULE	REFINISHED EXHAUST WALL BOX COVER
04-02	BRICK VENEER TYPE 2	09-01	EXTERIOR HM DOORS	AS-08	SUSPENDED CEILING	GLAZING PROTECTED FROM FIRE BY WINDOW SPRINKLER	OPEN CURTAIN WALL SECTION	DOOR / INTERIOR WINDOW NUMBER - SEE DOOR + FRAME SCHEDULE IN SPEC	
04-04a	ARCH. BLOCK TYPE 1 - SMOOTH (400x600)	AS-01	POURED CONCRETE SLAB ON GRADE	AS-09	ROOF TERRACE ABOVE INSUL. SPACE	FL	25mm FIRE LITE GLAZING	MATERIAL IDENTITY - REFER TO MATERIALS SCHEDULE FOR MANUFACTURER & COLOUR	
04-04c	ARCH. BLOCK TYPE 2 - ROCK-STONE (400x600)	AS-02	PRECAST FLOOR	AS-10	TYPICAL SLOPED ROOF ASSEMBLY	GL	FIRE LITE GLAZING		
05-02	DECORATIVE METAL FENCING WITH POWDER COAT FINISH	AS-03	TERRACE FLOOR			FS	FRAME SIZE		
07-23	ALUMINUM CURTAIN WALL FRAMING	AS-04	TUB AND SHOWER RM FLOOR (DROPPED FLOOR SLAB)			RO	ROUGH OPENING		
07-25	ALUMINUM WINDOW	AS-05	TPO FLAT ROOF ON PRECAST (MECHANICALLY FASTENED)						
07-28	COMPOSITE METAL PANEL								

NOTE: REFER TO SPECIFICATIONS FOR ADDITIONAL INFORMATION

P-08

- 203.600 PENTHOUSE
- 200.800 ELE. MACH. ROOM
- 199.300 L/P RHA ROOF
- 195.400 10TH FLOOR
- 192.000 9TH FLOOR
- 188.600 8TH FLOOR
- 185.200 7TH FLOOR
- 181.800 6TH FLOOR
- 178.400 5TH FLOOR
- 175.000 4TH FLOOR
- 171.600 3RD FLOOR
- 168.200 2ND FLOOR
- 164.500 1ST FLOOR
- 161.000 BASEMENT



1 SOUTH ELEVATION
0 2 5 10m
1:200 WHEN PLOTTED ON A1 SHEET SIZE

- 203.600 PENTHOUSE
- 200.800 ELE. MACH. ROOM
- 199.300 L/P RHA ROOF
- 195.400 10TH FLOOR
- 192.000 9TH FLOOR
- 188.600 8TH FLOOR
- 185.200 7TH FLOOR
- 181.800 6TH FLOOR
- 178.400 5TH FLOOR
- 175.000 4TH FLOOR
- 171.600 3RD FLOOR
- 168.200 2ND FLOOR
- 164.500 1ST FLOOR
- 161.000 BASEMENT



2 WEST ELEVATION
0 2 5 10m
1:200 WHEN PLOTTED ON A1 SHEET SIZE

TAG	MATERIAL DESCRIPTION	TAG	MATERIAL DESCRIPTION	TAG	MATERIAL DESCRIPTION
04-01	BRICK VENEER TYPE 1	08-02	OVERHEAD INSULATED GARAGE DOOR	AS-06	TPO FLAT ROOF ON METAL DECK (MECHANICALLY FASTENED)
04-02	BRICK VENEER TYPE 2	09-01	EXTERIOR HM DOORS	AS-08	SUSPENDED CEILING
04-04a	ARCH. BLOCK TYPE 1 - SMOOTH (400x600)	AS-01	POURED CONCRETE SLAB ON GRADE	AS-09	ROOF TERRACE ABOVE INSUL. SPACE
04-04c	ARCH. BLOCK TYPE 2 - ROCK-STONE (400x600)	AS-02	PRECAST FLOOR	AS-10	TYPICAL SLOPED ROOF ASSEMBLY
05-02	DECORATIVE METAL FENCING WITH POWDER COAT FINISH	AS-03	TERRACE FLOOR		
07-23	ALUMINUM CURTAIN WALL FRAMING	AS-04	TUB AND SHOWER RM FLOOR (DROPPED FLOOR SLAB)		
07-25	ALUMINUM WINDOW	AS-05	TPO FLAT ROOF ON PRECAST (MECHANICALLY FASTENED)		
07-28	COMPOSITE METAL PANEL				

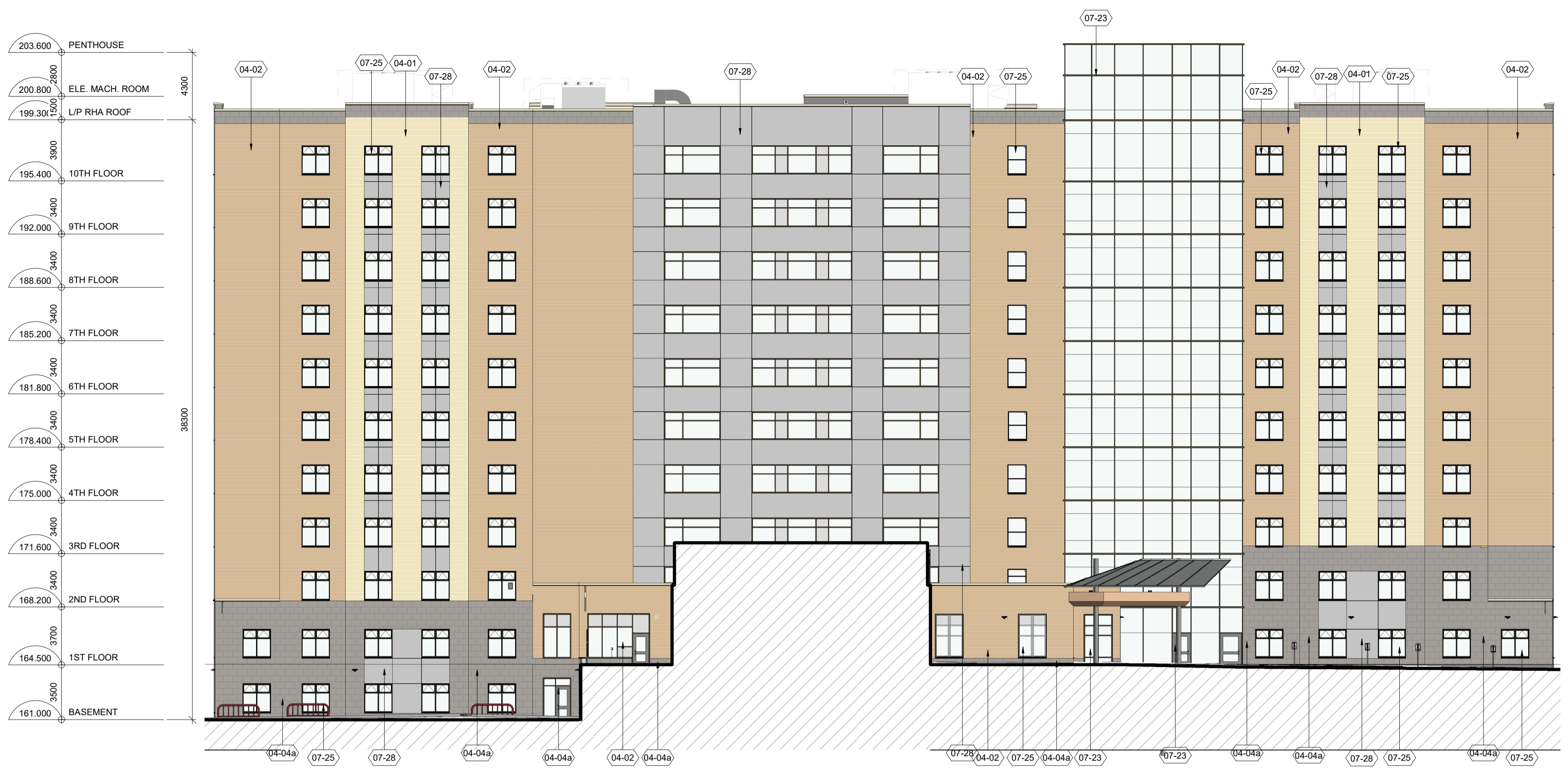
NOTE: REFER TO SPECIFICATIONS FOR ADDITIONAL INFORMATION

EXTERIOR ELEVATIONS GENERAL NOTES, ABBREVIATIONS & LEGEND

- ELEVATIONS ARE SHOWN PERPENDICULAR TO EACH BUILDING.
- ALL GLAZING IS FIXED UNLESS NOTED OTHERWISE.
- LIMIT OPENING OF OPERABLE SASH TO 100mm PER O.B.C. 3.3.4.8.
- USING MANUFACTURER'S RECOMMENDED HARDWARE / STOPS.
- VERIFY ACTUAL ROUGH OPENING (RO) SIZES ON SITE, PRIOR TO FABRICATION.

ABBREVIATIONS:
 FL FIRE LITE GLAZING
 FS FRAME SIZE
 RO ROUGH OPENING

GLAZING	VERTICAL SLIDER	WINDOW TYPE - SEE EXTERIOR ELEVATIONS & WINDOW SCHEDULE	PREFINISHED EXHAUST WALL BOX COVER
GLAZING PROTECTED FROM FIRE BY WINDOW SPRINKLER	OPEN CURTAIN WALL SECTION	DOOR / INTERIOR WINDOW NUMBER - SEE DOOR + FRAME SCHEDULE IN SPEC	
25mm FIRE LITE GLAZING	SPANDREL GLAZING	MATERIAL IDENTITY - REFER TO MATERIALS SCHEDULE FOR MANUFACTURER & COLOUR	



1 EAST ELEVATION - WEST LTC
1:200 WHEN PLOTTED ON A1 SHEET SIZE



2 WEST ELEVATION - EAST LTC
1:200 WHEN PLOTTED ON A1 SHEET SIZE

TAG	MATERIAL DESCRIPTION	TAG	MATERIAL DESCRIPTION	TAG	MATERIAL DESCRIPTION	EXTERIOR ELEVATIONS GENERAL NOTES, ABBREVIATIONS & LEGEND		GLAZING		WINDOW TYPE - SEE EXTERIOR ELEVATIONS & WINDOW SCHEDULE		PREFINISHED EXHAUST WALL BOX COVER	
04-01	BRICK VENEER TYPE 1	08-02	OVERHEAD INSULATED GARAGE DOOR	AS-06	TPO FLAT ROOF ON METAL DECK (MECHANICALLY FASTENED)	1.	ELEVATIONS ARE SHOWN PERPENDICULAR TO EACH BUILDING.	GL	25mm FIRE LITE GLAZING	WX	WINDOW TYPE - SEE EXTERIOR ELEVATIONS & WINDOW SCHEDULE		
04-02	BRICK VENEER TYPE 2	09-01	EXTERIOR HM DOORS	AS-08	SUSPENDED CEILING	2.	ALL GLAZING IS FIXED UNLESS NOTED OTHERWISE	GL	GLAZING PROTECTED FROM FIRE BY WINDOW SPRINKLER	5901	DOOR / INTERIOR WINDOW NUMBER - SEE DOOR + FRAME SCHEDULE IN SPEC		
04-04a	ARCH. BLOCK TYPE 1 - SMOOTH (400x600)	<varies>		AS-09	ROOF TERRACE ABOVE INSUL. SPACE	3.	LIMIT OPENING OF OPERABLE SASH TO 100mm PER O.B.C. 3.3.4.8.	FL		04-05	MATERIAL IDENTITY - REFER TO MATERIALS SCHEDULE FOR MANUFACTURER & COLOUR		
04-04c	ARCH. BLOCK TYPE 2 - ROCK-STONE (400x600)	AS-01	POURED CONCRETE SLAB ON GRADE	AS-10	TYPICAL SLOPED ROOF ASSEMBLY	4.	VERIFY ACTUAL ROUGH OPENING (RO) SIZES ON SITE, PRIOR TO FABRICATION.	FL					
05-02	DECORATIVE METAL FENCING WITH POWDER COAT FINISH	AS-02	PRECAST FLOOR			ABBREVIATIONS:		FL					
07-23	ALUMINUM CURTAIN WALL FRAMING	AS-03	TERRACE FLOOR			FL	FIRE LITE GLAZING	FL					
07-25	ALUMINUM WINDOW	AS-04	TUB AND SHOWER RM FLOOR (DROPPED FLOOR SLAB)			FS	FRAME SIZE	GL					
07-28	COMPOSITE METAL PANEL	AS-05	TPO FLAT ROOF ON PRECAST (MECHANICALLY FASTENED)			RO	ROUGH OPENING	GL					