

TREE #	TREE SPECIES	# OF TREES	SOIL VOLUME (m³) (SHARED)	CROWN AREA (m²)	CANOPY AREA (m²)
Large Stature Trees (14 m spread)					
P01	Black Tupelo	1	18.38m³	154	91.5
P02	Black Tupelo	1	18.38m³	154	154
P03	Black Tupelo	1	18.38m³	154	35.3
P04	Black Tupelo	1	18.38m³	154	94
P05	Black Tupelo	1	18.38m³	154	154
P06	Sugar Maple	1	18.38m³	154	95.6
P10	Sugar Maple	1	18.38m³	154	154
P11	Sugar Maple	1	19.08m³	154	154
P12	Tulip Tree	1	24.5m³	154	127.6
P14	Tulip Tree	1	24.5m³	154	9.7
P18	Tulip Tree	1	24.5m³	154	67.7
P24	Tulip Tree	1	24.5m³	154	87.8
P27	Tulip Tree	1	24.5m³	154	15.6
P30	Tulip Tree	1	24.5m³	154	154
P35	Sugar Maple	1	15.0m³	154	154
SUBTOTAL					1548.8
Medium Stature Trees (10-13 m spread)					
P13	Princeton Sentry Ginkgo Biloba	1	24.5m³	78.5	64.4
P15	Princeton Sentry Ginkgo Biloba	1	24.5m³	78.5	76
P16	Princeton Sentry Ginkgo Biloba	1	24.5m³	78.5	78.5
P17	Princeton Sentry Ginkgo Biloba	1	24.5m³	78.5	78.5
P22	Chanticleer Pear	1	19.08m³	78.5	64.9
P23	Chanticleer Pear	1	15.0m³	78.5	78.5
P25	Bowhall Maple	1	24.5m³	78.5	78.5
P26	Bowhall Maple	1	24.5m³	78.5	78.5
P28	Bowhall Maple	1	24.5m³	78.5	35.7
P29	Bowhall Maple	1	24.5m³	78.5	22.4
SUBTOTAL					655.9
Small Stature Trees (3-9 m spread)					
P07	Ironwood	1	18.38m³	7	1.6
P08	Ironwood	1	18.38m³	7	7
P09	Ironwood	1	18.38m³	7	0
P19	Ironwood	1	19.08m³	7	0
P20	Ironwood	1	19.08m³	7	0
P21	Ironwood	1	19.08m³	7	7
P31	Ironwood	1	15.0m³	7	7
P32	Ironwood	1	15.0m³	7	7
P33	Ironwood	1	15.0m³	7	7
P34	Ironwood	1	15.0m³	7	2.4
P36	Eastern Redbud	1	15.0m³	7	0
P37	Eastern Redbud	1	15.0m³	7	7
P38	Eastern Redbud	1	15.0m³	7	7
P39	Eastern Redbud	1	15.0m³	7	7
P40	Eastern Redbud	1	15.0m³	7	7
SUBTOTAL					74
Existing Trees Overhanging Site					
E01	Thuja occidentalis	1			20
SUBTOTAL OF EXISTING OVERHANGING CANOPY					20
Total # of trees		41	Total Canopy Area (m²)		2298.7
CANOPY SUMMARY					
Site Area (m²)		4989			
Site Canopy Cover		46.1%			
Site Canopy Cover Target		20%			

1 CANOPY COVER CHART

KEY	BOTANICAL NAME	COMMON NAME	HEIGHT	SPREAD	CALIPER
ASB	Acer saccharum	Sugar Maple	4000	2000	60
COB	Celtis occidentalis	Hackberry	4000	2000	60
PAB	Platanus x acerifolia	London Planetree	3500	1000	60
LTB	Liriodendron tulipifera	Tulip Tree	4000	2000	60

KEY	BOTANICAL NAME	COMMON NAME	HEIGHT	SPREAD	CALIPER
AS	Acer saccharum	Sugar Maple	4000	2000	60
AR	Acer rubrum "Bowhall"	Bowhall Red Maple	4000	2000	60
GB	Ginkgo biloba "Princeton Sentry"	Princeton Sentry Ginkgo Biloba	4000	2000	60
LT	Liriodendron tulipifera	Tulip Tree	4000	2000	60
OV	Ostrya virginiana	Ironwood	4000	2000	60
PC	Pyrus calleryana	Chanticleer Pear	3500	1000	60
AC	Amelanchier canadensis	Serviceberry	2000	1500	50
CC	Cercis canadensis	Eastern Redbud	3000	1500	50
CF	Cornus alternifolia	Pagoda Dogwood	3000	1500	50
CK	Cornus kousa "Wolf Eyes"	Wolf Eyes Japanese Dogwood	3000	1500	50

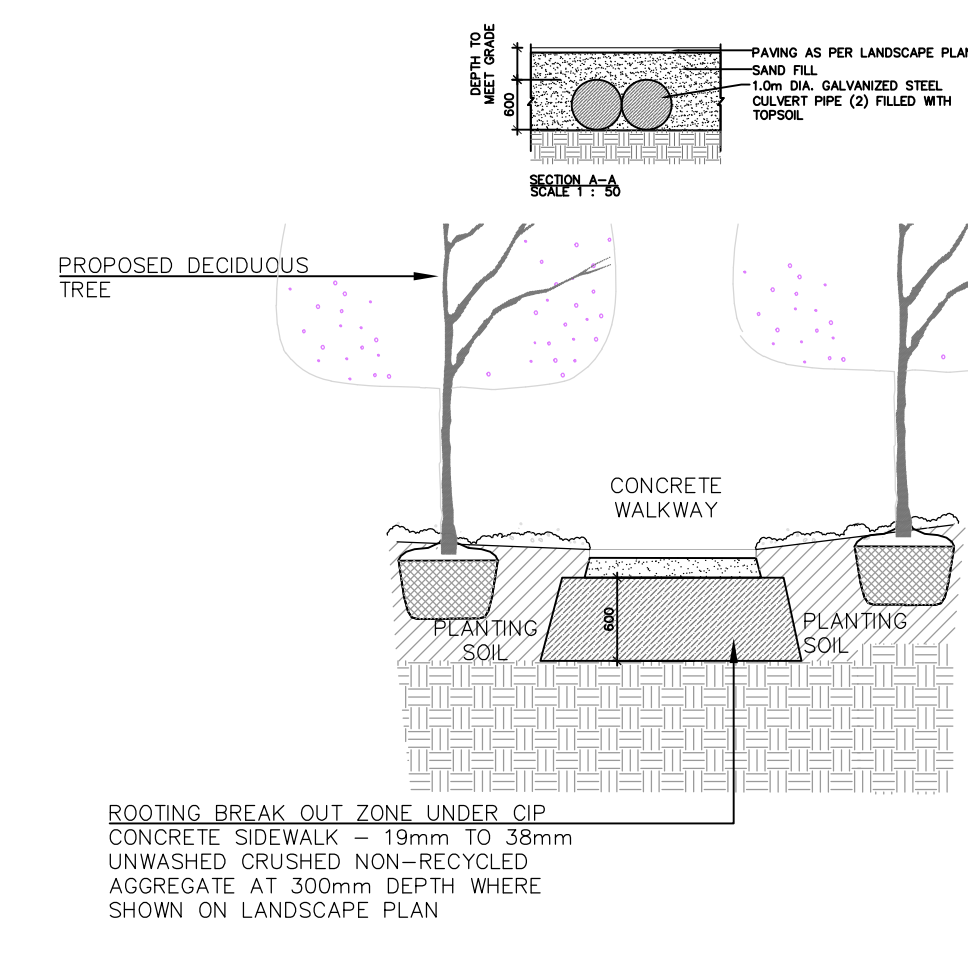
KEY	BOTANICAL NAME	COMMON NAME	HEIGHT	SPREAD	CALIPER
PG	Picea glauca	White Spruce	1750	1500	-

KEY	BOTANICAL NAME	COMMON NAME	HEIGHT	SPREAD	CALIPER
CS	Cornus sericea	Red Osier Dogwood	600	600	-
DI	Dierilla lonicera	Bush Honeysuckle	600	-	-
HK	Hypericum kalmianum	Pot O Gold	600	-	-
HP	Hydrangea paniculata "Little Lime Punch"	Little Lime Punch Hydrangea	700	-	-
RS	Rhus aromatica "Gro-Low"	Gro Low Sumac	600	-	-
SI	Spiraea japonica "Lemon Princess"	Lemon Princess Spiraea	600	-	-
SA	Symphoricarpos albus	Snowberry	600	-	-

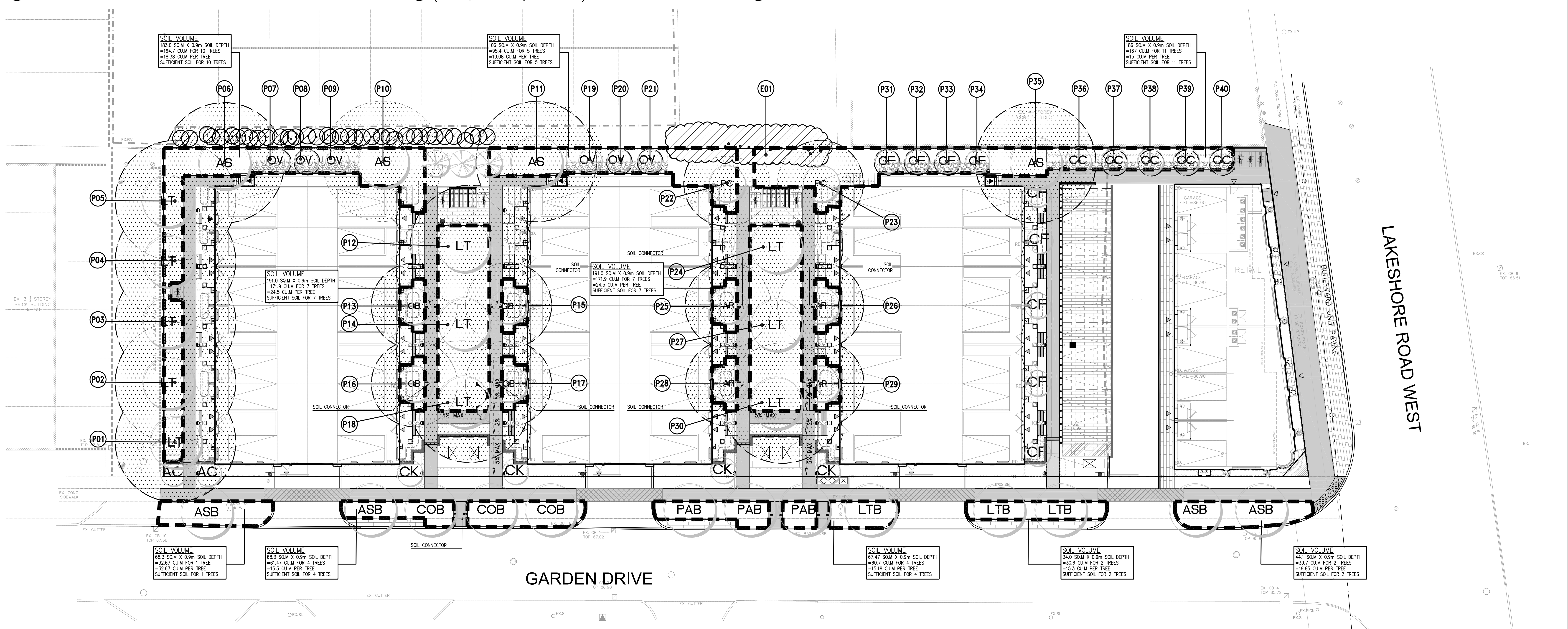
KEY	BOTANICAL NAME	COMMON NAME	HEIGHT	SPREAD	CALIPER
TC	Taxus cuspidata "Capitata"	Pyramidal Japanese Yew	600	-	-
TM	Taxus x media "Hill"	Hills Yew	700	-	-

KEY	BOTANICAL NAME	COMMON NAME	HEIGHT	SPREAD	CALIPER
AT	Asclepias tuberosa	Butterfly Milkweed	-	-	-
EP	Echinacea purpurea	Purple Coneflower	-	-	-
GM	Geranium x "Rozanne"	Rozanne Cranebills	-	-	-
HG	Hosta "Golden Variegated"	Golden Variegated Hosta	-	-	-
HM	Hakonechloa macro	Hakone Grass	-	-	-
HP	Hemerocallis "Purple D'Oro"	Purple D'Oro Daylily	-	-	-
HT	Hosta "Touch of Class"	Touch of Class Hosta	-	-	-
OC	Obsidian Coral Bells	Obsidian Coral Bells	-	-	-
PV	Panicum virgatum	Switch Grass	-	-	-
RH	Rudbeckia hirta	Black Eyed Susan	-	-	-
SG	Sedum "Garnet Brocade"	Garnet Brocade Stonecrop	-	-	-
SS	Shizanthus scapularium	Little Bluestem	-	-	-
SH	Sporobolus heterolepis	Prarie Dropseed	-	-	-

2 PROPOSED PLANT LIST (FOR QUANTITIES, SEE L100)



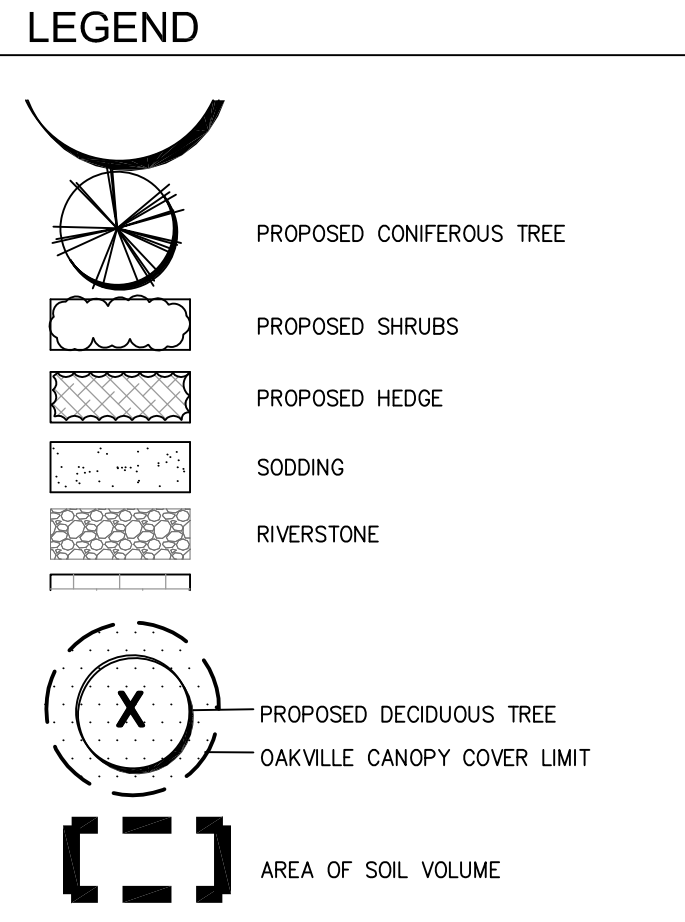
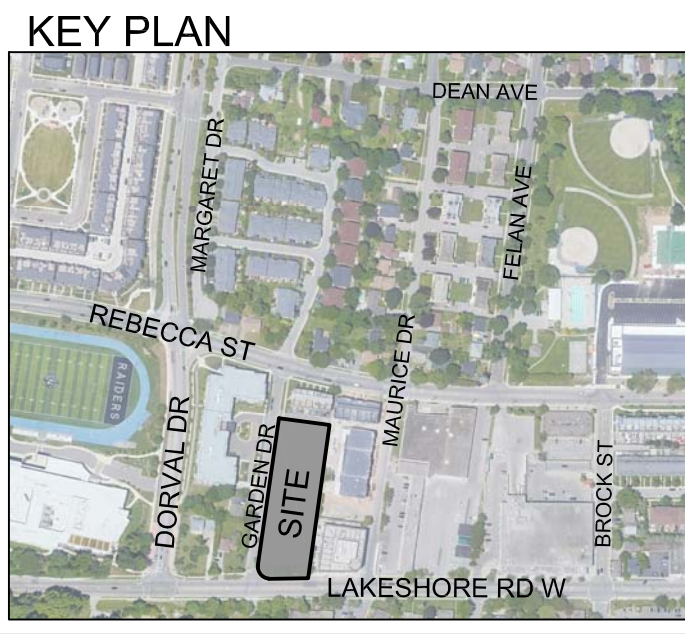
3 SOIL CONNECTOR



GARDEN DRIVE

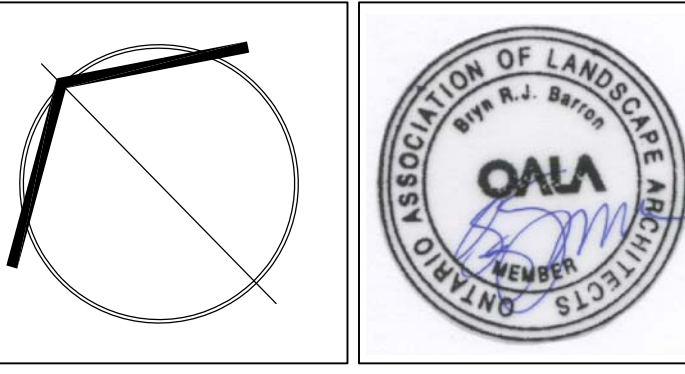
LAKESHORE ROAD WEST

GENERAL NOTES
 - VERIFY ALL DIMENSIONS.
 - DO NOT SCALE DRAWINGS.
 - REPORT ANY DISCREPANCIES, DISCOVERED ERRORS, OR OMISSIONS TO THE LANDSCAPE ARCHITECT BEFORE PROCEEDING.
 - IT IS ADVISED THAT CONTRACTORS CONTACT THE LANDSCAPE ARCHITECT PRIOR TO CONSTRUCTION TO ENSURE THE USE OF THE LATEST REVISED DRAWINGS.
 - DRAWINGS AND SPECIFICATIONS ARE THE PROPERTY OF THE LANDSCAPE ARCHITECT.



No.	DATE	REVISION	BY
5	NOV 20th, 2024	ISSUED FOR ZBA SUBMISSION	BB
4	NOV 8th, 2024	ISSUED FOR ZBA RESUBMISSION/ SPA 1st SUBMISSION	BB
3	AUG 1st, 2024	ISSUED FOR SPA SUBMISSION	BB
2	JULY 3rd, 2024	ISSUED FOR SUBMISSION	BB
1	MAY 24, 2024	ISSUED FOR COORDINATION	BB

It is the responsibility of the Contractor and/or Owner to ensure that the drawings with the latest revisions are used for construction.



SBK 5770 HURONTARIO STREET, SUITE 320
 MISSISSAUGA, ONTARIO, L4R 3G5
 T: 416.695.4949 F: 905.712.3101
 WWW.STRYBOS.COM

STRYBOS BARRON KING
 LANDSCAPE ARCHITECTURE

PROJECT: **PROPOSED MIXED USE DEVELOPMENT**
 OAKVILLE GARDEN RESIDENCES CORP
 109 GARDEN DRIVE
 OAKVILLE, ONTARIO

DRAWING TITLE: **CANOPY COVER PLAN**

SCALE:	PROJECT No.
DATE: MAY 2024	24-6010
DRAWN BY: T.S./S.S.	DRAWING No. L101
CHECKED BY: B.B.	