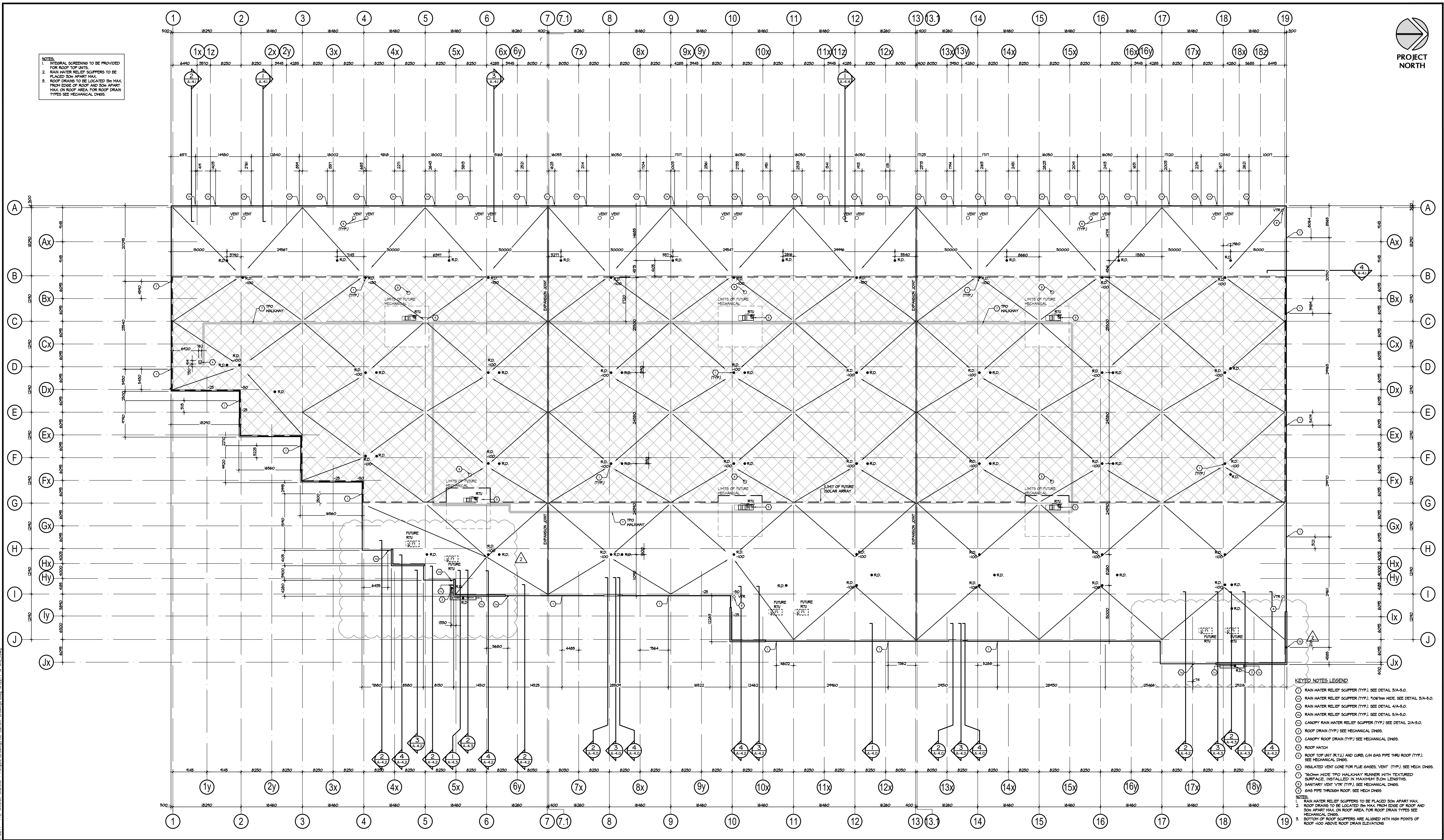


- NOTES:**
- INTEGRAL SCREENING TO BE PROVIDED FOR ROOF TOP UNITS.
  - RAIN WATER RELIEF SCUPPERS TO BE PLACED 50M APART MAX.
  - ROOF DRAINS TO BE LOCATED 5M MAX FROM EDGE OF ROOF AND 50M APART MAX ON ROOF AREA. FOR ROOF DRAIN TYPES SEE MECHANICAL SHEETS.



- KEYED NOTES LEGEND**
- ① RAIN WATER RELIEF SCUPPER (TYP.) SEE DETAIL 3/A-5.0.
  - ② RAIN WATER RELIEF SCUPPER (TYP.) 100mm WIDE. SEE DETAIL 3/A-5.0.
  - ③ RAIN WATER RELIEF SCUPPER (TYP.) SEE DETAIL 4/A-5.0.
  - ④ RAIN WATER RELIEF SCUPPER (TYP.) SEE DETAIL 5/A-5.0.
  - ⑤ CANOPY RAIN WATER RELIEF SCUPPER (TYP.) SEE DETAIL 2/A-5.0.
  - ⑥ ROOF DRAIN (TYP.) SEE MECHANICAL SHEETS.
  - ⑦ CANOPY ROOF DRAIN (TYP.) SEE MECHANICAL SHEETS.
  - ⑧ ROOF HATCH
  - ⑨ ROOF TOP UNIT (RTU) AND CURB, CAN GAS PIPE THRU ROOF (TYP.) SEE MECHANICAL SHEETS.
  - ⑩ INSULATED VENT CONE FOR FLUE GASES, VENT (TYP.) SEE MECH. SHEETS.
  - ⑪ 160mm WIDE TPO WALKWAY RUNNER WITH TEXTURED SURFACE, INSTALLED IN MAXIMUM 5.0M LENGTHS.
  - ⑫ SANITARY VENT (TYP.) SEE MECHANICAL SHEETS.
  - ⑬ GAS PIPE THROUGH ROOF. SEE MECH SHEETS.
- NOTES:**
- RAIN WATER RELIEF SCUPPERS TO BE PLACED 50M APART MAX.
  - ROOF DRAINS TO BE LOCATED 5M MAX FROM EDGE OF ROOF AND 50M APART MAX ON ROOF AREA. FOR ROOF DRAIN TYPES SEE MECHANICAL SHEETS.
  - BOTTOM OF ROOF SCUPPERS ARE ALIGNED WITH HIGH POINTS OF ROOF +0.07 ABOVE ROOF DRAIN ELEVATIONS.

No.	ISSUED	DATE
1	ISSUED FOR COORDINATION	MAR. 30, 2021
2	ISSUED FOR SPA	APR. 9, 2021
3	RE-ISSUED FOR SPA	DEC. 15, 2021
4	RE-ISSUED FOR SPA	DEC. 16, 2022
5	ISSUED FOR STEEL AND PRECAST TENDER	FEB. 17, 2023

6	REISSUED FOR STEEL TENDER	SEPT. 18, 2023
7	REISSUED FOR SPA	DEC. 19, 2023
8	REISSUED FOR CITY REVIEW	MAY 10, 2024

No.	REVISION	DATE
1	REVISED AS NOTED	NOV. 10, 2023

**BALDASSARRA**  
Architects Inc.

30 Great Gulf Drive, Unit 20 | Concord ON | L4K 0K7  
T. 905.660.0722 | www.baldassarra.ca

OWNERS INFORMATION:



**FENGATE**  
772 Winston Churchill Blvd.  
Oakville, Ontario

**ROOF PLAN Building A**

DATE: MAR. 2021 | DRAWN BY: HP | CHECKED: | SCALE: 1:450

PROJECT No. | DRAWING No. 22-77 A | **A-2.1**