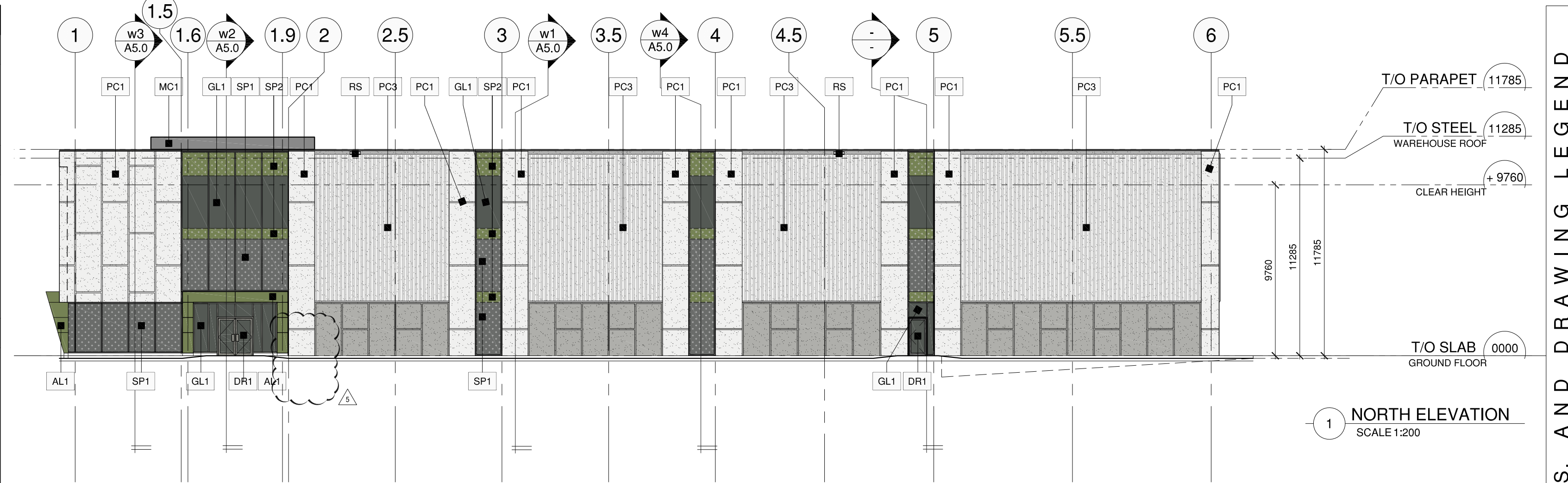


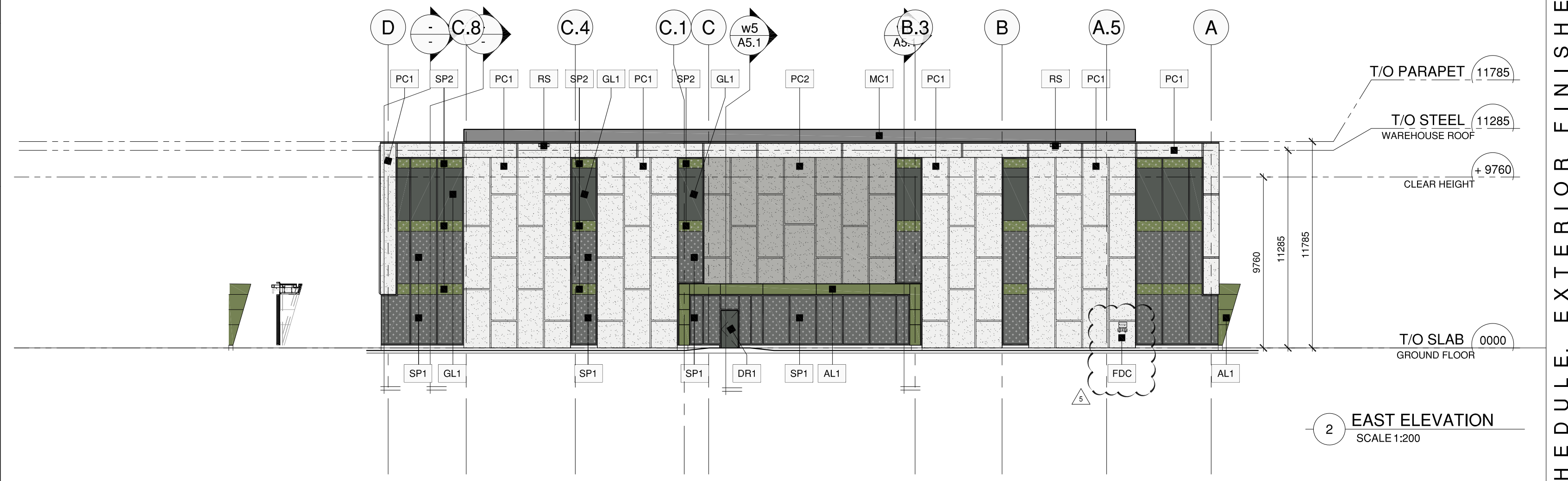
MATERIAL AND ASSEMBLY TYPE SCHEDULE cont'd	
DR	EXTERIOR MAN-DOORS
DR1	ALUMINUM EXTERIOR ENTRANCE DOOR(S) IN FR1 TYPE: 40A INSULATED, 1X185W (SINGLE) / 2x185W (DOUBLE) X 215SH FINISH: TO MATCH FR1 PULL: 183MM LONG "STAINLESS STEEL" (EXTERIOR ONLY) PUSH: WIDTH OF DOOR "STAINLESS STEEL" (INTERIOR ONLY) BY: ALUMICOR OR EQUAL
DR2	PREFINISHED EXTERIOR INSULATED HOLLOW METAL DOOR IN THERMALLY BROKEN INSULATED METAL FRAME, 1X185W X 215SH DOOR IN 50MM FRAMES WITH GLASS VISION PANEL AT LOCATIONS AS ILLUSTRATED FINISH: PAINT FINISH "SEMI-GLOSS" COLOUR: TO MATCH ADJACENT WALL
OH	EXTERIOR OVERHEAD - DOORS
OH1	PREFINISHED, INSULATED DOCK LEVEL OVERHEAD DOOR W. VISION PANEL SECTIONAL STEEL, ELECTRICALLY OPERATED VERTICAL LIFT, WEATHER STRIPPED AND LOCKABLE 2440MM WIDE X 3050MM HIGH (8'W X 10'H) CLEAR OPENING FINISH: "WHITE" TO MATCH PC1 R-20 MIN. FOR EACH DOOR: PROVIDE DOCK LEVELER, SEALS, BUMPERS HYDRAULICALLY OPERATED DOCK LEVELER PLATFORM COMPLETE WITH 405MM HINGED LIP 100X25X330 MM MOLDED LAMINATED RUBBER BUMPER / 2 PER DOOR SIZE: 183MM WIDE X 2440MM DEEP, 40,000 LB CAPACITY WEATHER SEAL BRUSH, 2 WHEEL CHOCKS PER DOOR BLUE GIANT OR EQUAL 40 mm W/VEL COVERED DOCK SEAL WITH 305MM COMPRESSION HEAD, "STANDARD BLACK" BY BLUE GIANT OR EQUAL PROVIDE 2 x 8" DIA. INTERIOR CONCRETE FILLED STEEL PIPE BOLLARDS W. CONC. FOUNDATIONS, PAINT FINISH COLOUR: TBD
ST	EXTERIOR STAIRS
ST1	- GALVANIZED STEEL STAIRSLANDING WITH STEEL PIPE HANDGUARD RAIL WITH 38MM Ø STEEL PIPE TOP & BOTTOM RAILS AND POSTS (POSTS SPACED @ MAX 1200 C/C) - 13MM Ø STEEL PICKETS SPACED @ MAX 100MM CLEAR OPENING - STEEL CHANNEL STRINGER WITH - OPEN GRATE LANDING / TREADS ON STEEL CLIP ANGLES - PROVIDE STEEL PLATE PADS FOR STRINGER AT CONCRETE APRON - NUMBER OF TREADS/RISERS TO SUIT GRADE - MINIMUM TREAD: 280MM MAXIMUM RISE: 180MM - NON-SLIP NOSING IN CONTRASTING COLOUR ON TREADS - TACTILE ATTENTION INDICATOR
MF	METAL FLASHINGS
MF1	TYPE: PREFINISHED METAL COLOUR: "GREY" TO MATCH "FR1" BY: VICWEST, AGWAY, OR EQUAL
MC	METAL CLADDING ASSEMBLIES
MC1	38 RIBBED PROFILE METAL SINGL, VICWEST CG6225 OR APPROVED ALTERNATE HORIZONTAL ORIENTATION ON 38 GALVANIZED METAL FURRING CHANNELS WELDED TO STRUCTURAL FRAMING MATCHING PREFINISHED TRIMS FLASHINGS AS REQUIRED REFER TO ELEVATIONS FOR EXTENTS COLOUR: REGENT GREY C02606

MATERIAL AND ASSEMBLY TYPE SCHEDULE cont'd	
PC	PRECAST CONCRETE PANEL ASSEMBLIES
PC1	TYPE: 255MM INSULATED ARCHITECTURAL PRECAST CONCRETE SANDWICH PANELS 1 HR FIRE RATED SANDWICH PANELS REQUIRED, EXTENTS AS INDICATED ON DRAWINGS. 30MM REQUIRED FOR EQUIVALENT THICKNESS (O.B.C. SB 2 Table 2.1.1) MIN. R-7.5 TEXTURE, COLOUR AND FINISH AS NOTED BELOW. REFER TO ELEVATIONS FOR EXTENTS BY: PRE-CON OR EQUAL
PC2	FINISH: LIGHT SANDBLAST FINISH COLOUR: WHITE TO EXTENTS AS INDICATED ON DRAWINGS 75MM WIDE HORIZONTAL / VERTICAL REVEALS AT LOCATIONS AS ILLUSTRATED
PC3	WITH 50mm RIBS FINISH: LIGHT SANDBLAST FINISH COLOUR: WHITE TO EXTENTS AS INDICATED ON DRAWINGS AS ILLUSTRATED
AL	ALUMINUM COMPOSITE METAL PANEL ASSEMBLIES
AL1	51 MM PREFINISHED ALUMINUM COMPOSITE METAL PANEL WITH 8 MM SHIM SPACE VENTED DRY JOINT CONSTRUCTION VERTICAL-HORIZONTAL JOINTS AT LOCATIONS AS ILLUSTRATED PROFILE: SMOOTH CW 13 MM REVEALS FINISH: COLOUR: CUSTOM GREEN COLOUR TBD BY ALPOLIC, ALUCOBOND, OR APPROVED EQUAL

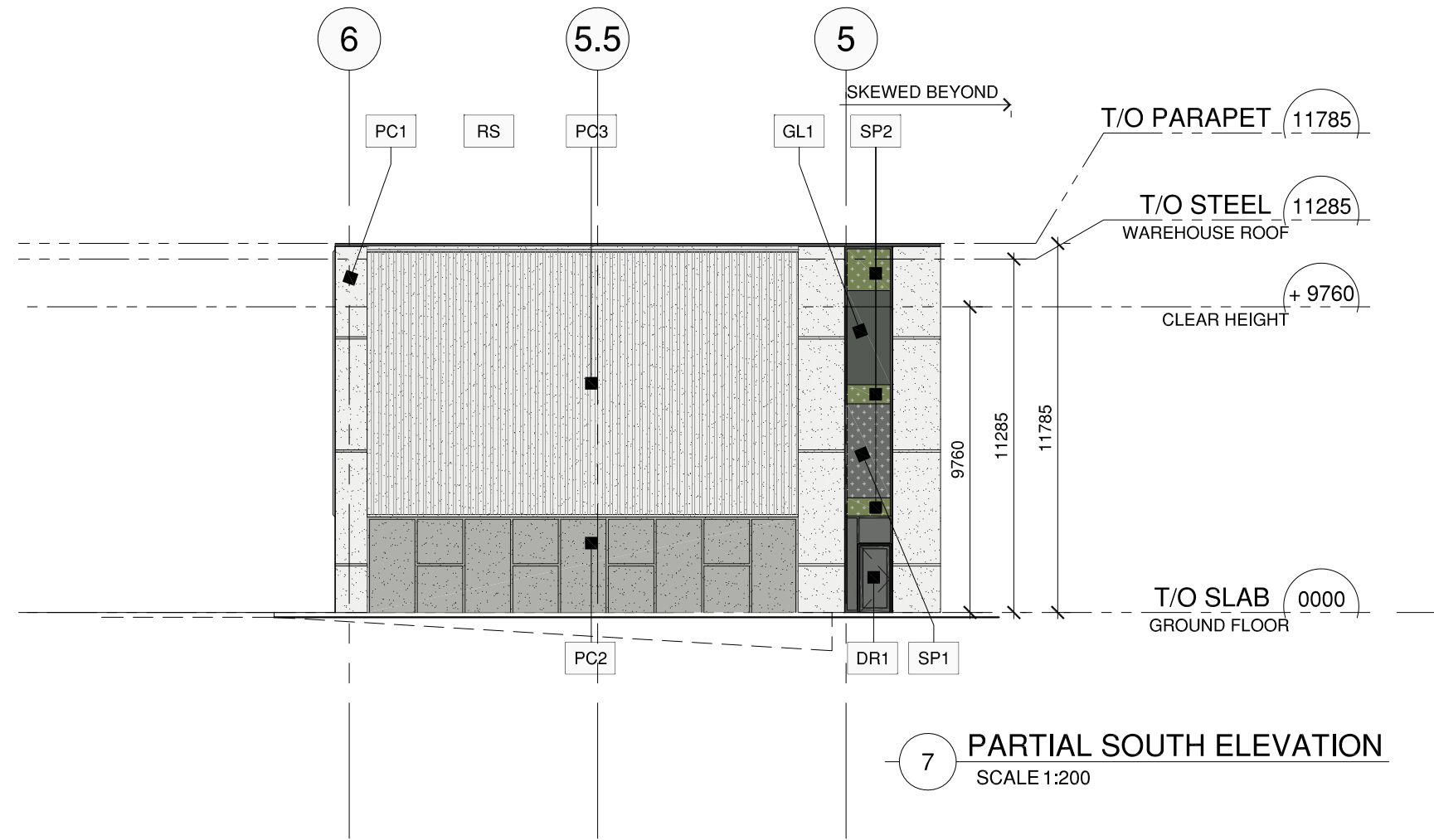
MATERIAL AND ASSEMBLY TYPE SCHEDULE	
FR	FRAMING TYPES
FR1	TYPE: THERMAWALL 2000 SERIES ALUMINUM FRAMING 133MM FRAME BODY SSG JOINTS (AS PER DRAWINGS) 19MM CAPS (AS PER DRAWINGS) FINISH: CLEAR ANODIZED ALUMINUM MULLIONS AND DURANAR SUNSTORM GREY VELVET CAPS BY: ALUMICOR OR EQUAL
GL	GLAZING TYPES
GL1	SEALED GLAZED VISION GLASS UNITS IN FR1 6MM TINTED LIGHT GREY "VITRO OPTIGRAY" HEAT STRENGTHENED AND TEMPERED EXTERIOR PANE 6MM CLEAR HEAT STRENGTHENED AND TEMPERED INTERIOR PANE SURFACE 1: PPG SOLARBAN 60 LOW-E COATING SURFACE 2: ARGON FILLED WARM EDGE SPACERS SURFACE 3: SSG JOINTS (LOCATIONS AS ILLUSTRATED) EXTERIOR CAPS AT LOCATIONS AS ILLUSTRATED BY: PPG INDUSTRIES OR EQUAL
GL2	SEALED SPANDREL GLASS UNITS IN FR1 6MM TINTED "VITRO OPTIGRAY" HEAT STRENGTHENED AND TEMPERED EXTERIOR PANE 6MM CLEAR HEAT STRENGTHENED AND TEMPERED INTERIOR PANE SURFACE 1: LOW-E COATING SURFACE 2: ARGON FILLED WARM EDGE SPACERS SURFACE 3: SSG JOINTS (LOCATIONS AS ILLUSTRATED) EXTERIOR CAPS AT LOCATIONS AS ILLUSTRATED BY: PPG INDUSTRIES OR EQUAL
GL3	SEALED SPANDREL GLASS UNITS IN FR1 6MM CLEAR HEAT STRENGTHENED AND TEMPERED EXTERIOR PANE 6MM CLEAR HEAT STRENGTHENED AND TEMPERED INTERIOR PANE SURFACE 1: LOW-E COATING SURFACE 2: ARGON FILLED WARM EDGE SPACERS SURFACE 3: SSG JOINTS (LOCATIONS AS ILLUSTRATED) EXTERIOR CAPS AT LOCATIONS AS ILLUSTRATED BY: PPG INDUSTRIES OR EQUAL
GL4	SEALED SPANDREL GLASS UNITS IN FR1 6MM CLEAR HEAT STRENGTHENED AND TEMPERED EXTERIOR PANE 6MM CLEAR HEAT STRENGTHENED AND TEMPERED INTERIOR PANE SURFACE 1: LOW-E COATING SURFACE 2: ARGON FILLED WARM EDGE SPACERS SURFACE 3: SSG JOINTS (LOCATIONS AS ILLUSTRATED) EXTERIOR CAPS AT LOCATIONS AS ILLUSTRATED BY: PPG INDUSTRIES OR EQUAL
GL5	SEALED SPANDREL GLASS UNITS IN FR1 6MM CLEAR HEAT STRENGTHENED AND TEMPERED EXTERIOR PANE 6MM CLEAR HEAT STRENGTHENED AND TEMPERED INTERIOR PANE SURFACE 1: LOW-E COATING SURFACE 2: ARGON FILLED WARM EDGE SPACERS SURFACE 3: SSG JOINTS (LOCATIONS AS ILLUSTRATED) EXTERIOR CAPS AT LOCATIONS AS ILLUSTRATED BY: PPG INDUSTRIES OR EQUAL



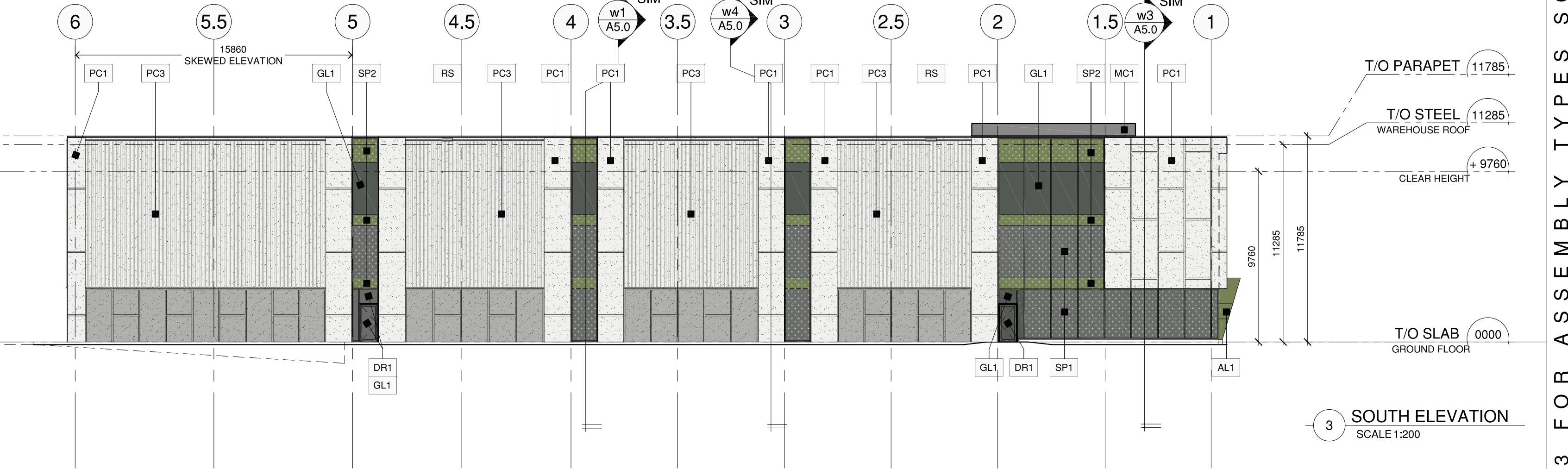
1 NORTH ELEVATION SCALE 1:200



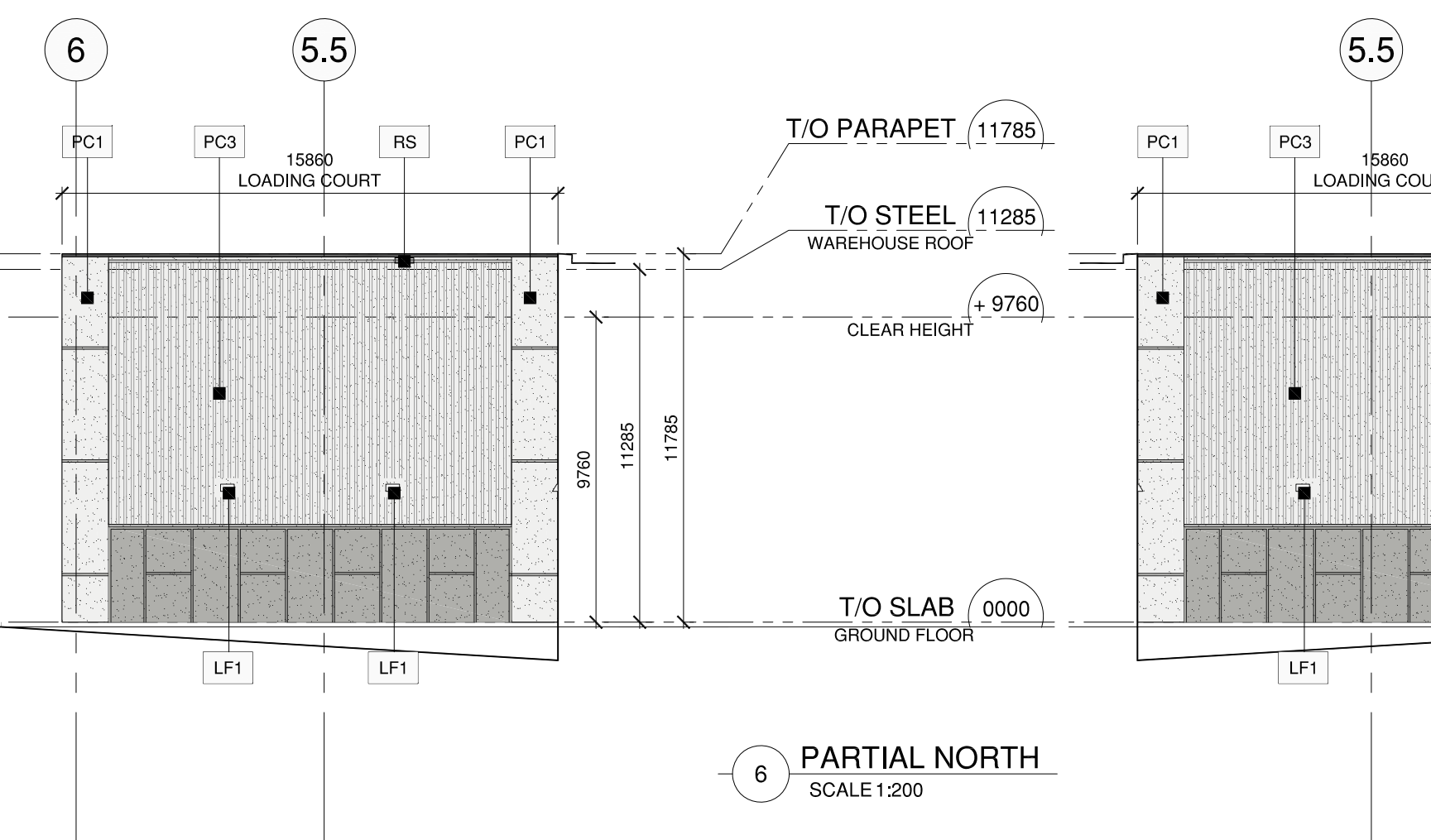
2 EAST ELEVATION SCALE 1:200



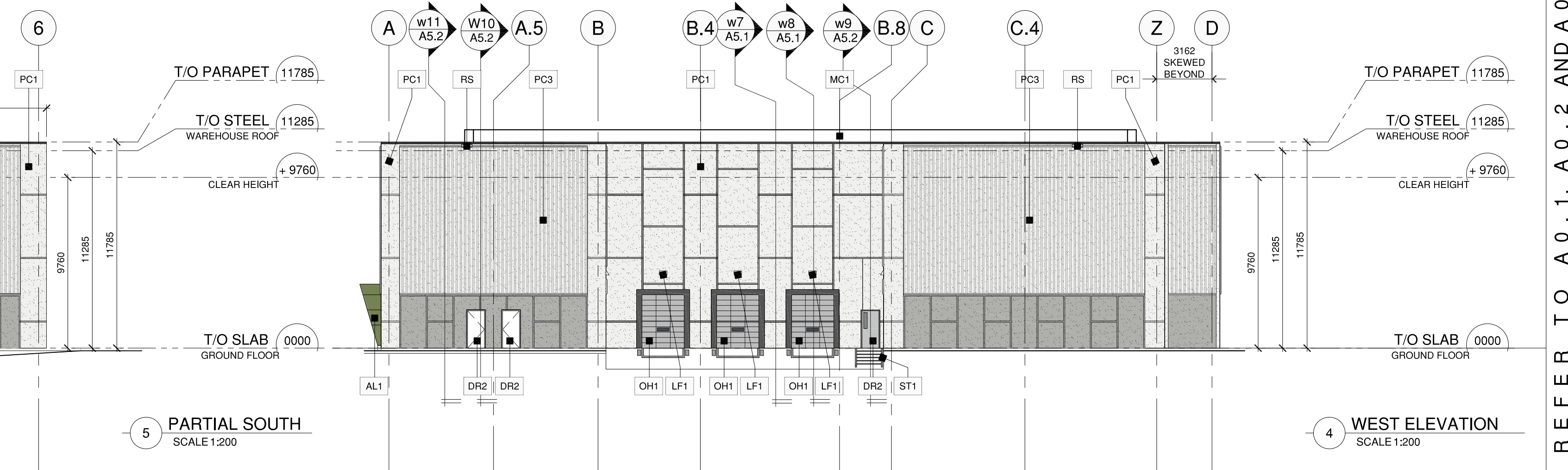
7 PARTIAL SOUTH ELEVATION SCALE 1:200



3 SOUTH ELEVATION SCALE 1:200



6 PARTIAL NORTH SCALE 1:200



4 WEST ELEVATION SCALE 1:200

REFER TO A 0.1, A 0.2 AND A 0.3 FOR ASSEMBLY TYPES SCHEDULE, EXTERIOR FINISHES, AND DRAWING LEGEND

Pearce McCluskey Architects
2203 Durwin Drive • Mississauga, Ontario • L5L 1X2
www.pmarchitects.ca 1.905.607.2444

ALLIANCE OF ARCHITECTS
PEARCE MCCLUSKEY
LICENCE 5612

This drawing is not to be used for construction unless signed by partner in charge.
Contractors must verify all dimensions and be responsible for same, report any discrepancies to the architect before commencing the work.
Prints are not to be scaled.
All drawings and related documents are the sole copyright property of the architects and must be returned upon request, any reproduction of drawings and related documents in part or in whole is forbidden without the architect's written permission.

OWNER:
KANEFF GROUP OF COMPANIES
15501 Mississauga Road
Brampton | Ontario | L6Y 5G8

REISSUED FOR SITE PLAN APPROVAL 04 JUN 24
REISSUED FOR SITE PLAN APPROVAL 27 MAR 24
REISSUED FOR SITE PLAN APPROVAL 22 AUG 23
ISSUED FOR SITE PLAN APPROVAL 15 JUN 23
ISSUED FOR COORDINATION 05 May 23

New 1-Storey Warehouse Building

2360 Bristol Circle
Oakville, Ontario

OVERALL ELEVATIONS

Project Number:
22029

Drawn By: MS
Checked By: JP
Date: May 2023
Scale: 1:200
Sheet Number:
A3.0