

1 V100 TREE PROTECTION HOARDING

KEY SPECIES	Common Name	Botanical Name	DBH (cm)	CROWN (metres)	HEALTH	STRUCTURE	COMMENTS	OWNERSHIP	PRESERVATION	TREE CATEGORY	MIN. TPZ (m)	KEY
190	Crimson King Maple	Acer platanoides	38	10	Good	Broad	Branching to grade, 2x4 nailed to trunk at 3m ht.	Private	Remove	1	3.0	190
191	White Spruce	Picea glauca	30	8	Poor	Irregular	Elevated crown, poor pruning, deadback in lower branches, declining	Private	Preserve	1	2.4	191
192	American Elm	Ulmus americana	55	14	Fair	Double Leader	Stem union at 5m ht., minor deadwood, broken branches, crown overhanging adjacent property.	Private	Preserve	1	3.6	192
193	White Mulberry	Morus alba	39.40	12	Poor-Fair	Multi-Stem	Stem union at 1m ht., vine entangled, minor epicormic growth, crowded branching, included bark	Private	Remove	1	3.0	193
194	Colorado Spruce	Picea pungens	40	6	Fair	Pyramidal	Elevated crown, crowded by adjacent tree	Private	Remove	1	3.0	194
195	Norway Maple	Acer platanoides	102	20	Fair-Good	Broad	Multi leader, included bark, mature tree, minor deadwood, crowded by adjacent tree	Private	Remove	1	10.2	195
196	Hedge Cedar	Thuja occidentalis	15-24	Varies	Fair-Good	Hedge	10 stems, minor deadwood, crowded by adjacent	Private	Preserve	1	2.4	196
197	Norway Maple	Acer platanoides	22	4	Fair	One-Sided	Crowded by adjacent tree, leaning	Private	Remove	1	2.4	197
198	Malus Species	Malus spp.	17.24	8	Fair	Multi-Stem	2 stems, epicormic growth, crowded	Private	Remove	1	2.4	198
199	White Mulberry	Morus alba	30	8	Poor	Cut Leader	90% dead, major deadwood, pruned leader	Private	Remove	1	2.4	199
200	White Mulberry	Morus alba	41	8	Poor	Cut Leader	90% dead, major deadwood, pruned leader	Private	Remove	1	3.0	200
201	Black Walnut	Juglans nigra	52	12	Fair-Good	High Crown	Crowded by adjacent tree, one-sided, minor deadwood	Private	Remove	1	3.6	201
202	Black Walnut	Juglans nigra	53	12	Fair-Good	High Crown	Crowded by adjacent tree, one-sided, minor deadwood	Private	Remove	1	3.6	202
203	Magnolia	Magnolia Stellata	25.29	10	DEAD	Multi-Stem	2 stems	Private	Remove	1	2.4	203
204	Black Locust	Robinia pseudoacacia	68	12	Fair-Good	Leaning	Double leader, union at 1m ht, broken branches, minor deadwood, crowded by adjacent tree, broken branches	Private	Remove	1	4.2	204
205	Mulberry	Morus alba	19.31.32	12	Fair	One-Sided	Multi leader, 3 stems, crowded by adjacent tree, leaning, minor deadwood, crowded branching	Private	Remove	1	3.0	205
206	Juniper	Juniperus	57	12	Fair	One-Sided	Crowded by adjacent, minor deadwood, included bark	Private	Remove	1	3.6	206
207	Austrian Pine	Pinus nigra	26	10	Poor-Fair	One-Sided	Crowded by adjacent, elevated crown, broken branches	Private	Remove	1	2.4	207
208	Austrian Pine	Pinus nigra	32	10	Poor-Fair	One-Sided	Crowded by adjacent, elevated crown, broken branches	Private	Remove	1	3.0	208
209	White Mulberry	Morus alba	26	8	Poor-Fair	Leaning	Crowded by adjacent, epicormic growth, branching to grade	Private	Remove	1	2.4	209
210	Juniper	Juniperus	22	8	Poor-Fair	Double Leader	Crowded by adjacent, union at 3m ht., broken branches	Private	Remove	1	2.4	210
211	Manitoba Maple	Acer negundo	15	8	Poor	Leaning	Crowded by adjacent, epicormic growth, adjacent to sidewalk	Private	Remove	1	2.4	211
212	White Mulberry	Morus alba	18.21	10	Poor-Fair	Multi-Stem	2 stems, crowded by adjacent tree, union at base	Private	Remove	1	2.4	212
213	Black Locust	Robinia pseudoacacia	17.23.27	14	Fair	Multi-Stem	3 stems, crowded by adjacent tree, leaning, union at base, one-sided, canopy overhanging Garden Drive	Public	Remove	4	2.4	213
214	Green Ash	Fraxinus pennsylvanica	29	12	Fair-Good	High Crown	Elevated crown, epicormic growth, minor deadwood	Public	Remove	4	2.4	214
215	Black Locust	Robinia pseudoacacia	49	12	Fair	Double Leader	Crowded by adjacent tree, leaning, one-sided, canopy overhanging Garden Drive	Public	Remove	4	3.0	215
216	Siberian Elm	Ulmus pumila	28	8	Fair	Multi-Leader	Crowded branching, tree base and root covered with asphalt, poor pruning	Public	Remove	4	2.4	216
217	Black Locust	Robinia pseudoacacia	58.69	12	Fair	Multi-Stem	2 stems, crowded by adjacent tree, exposed roots, union at base, broken branches, minor deadwood	Private	Remove	1	3.6	217
218	Black Locust	Robinia pseudoacacia	58.60	12	Fair	Multi-Stem	2 stems, crowded by adjacent tree, exposed roots, union at base, minor deadwood, girdling roots, fluting bodies present	Private	Remove	1	3.6	218
219	Colorado Spruce	Picea pungens	51	10	Fair	Pyramidal	Crowded by adjacent tree, minor deadwood, deadback in lower branches, poor pruning	Private	Remove	1	3.6	219
220	White Cedar	Thuja occidentalis	<10	varies	Fair	Hedge	15 stems, located on neighbouring property, adjacent to precast wall with wood screen	Private	Preserve	2	1.8	220

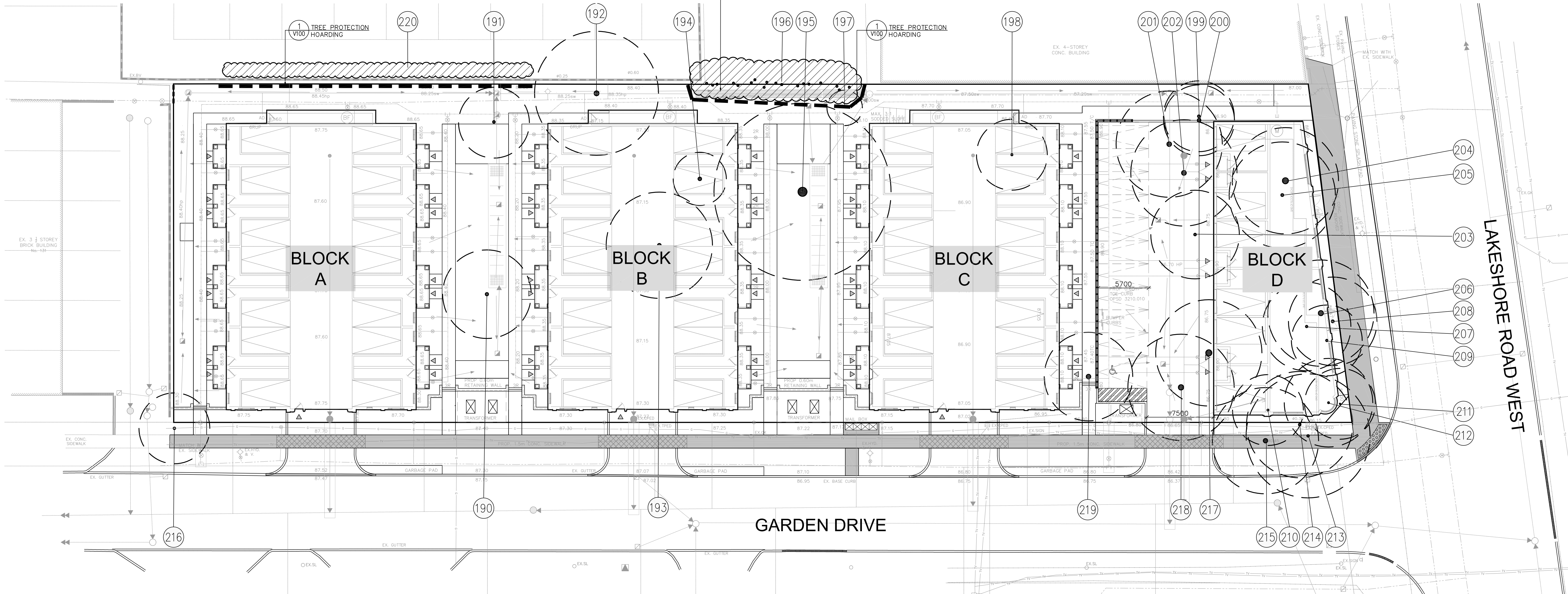
2 V100 EXISTING TREE INVENTORY LIST

TREE CATEGORIES	DESCRIPTION
1	Trees with diameters of 15cm or more, situated on private property, on the subject site
2	Trees with diameters of 15cm or more, situated on private property, within 6m of the subject site
3	Trees of all diameters situated on Town owned Parkland within 6m of the subject site
4	Trees of all diameters situated within the City road allowance adjacent to the subject site
Exempt	Trees that are less than 15cm diameter and located on private property.

NOTE:  
NEIGHBOURING TREES AND/OR BOUNDARY TREES HAVE BEEN FIELD MEASURED TO CONFIRM THE DRIP LINE DISTANCE FROM THE PROPERTY LINE AND/OR DEVELOPMENT LIMIT

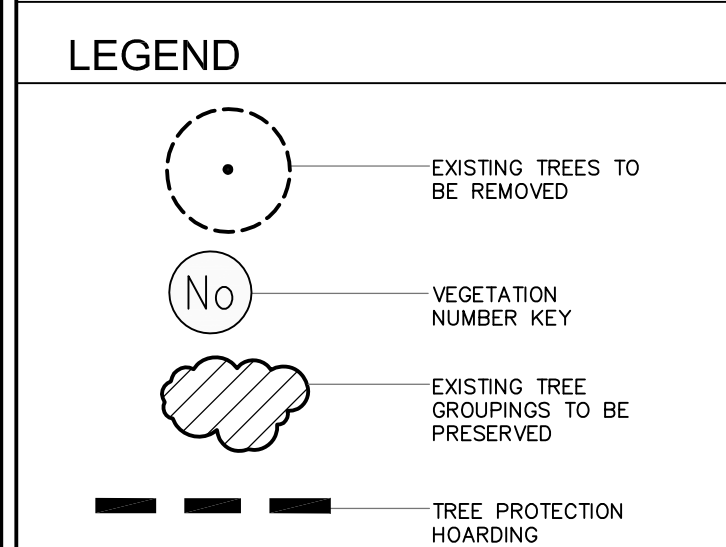
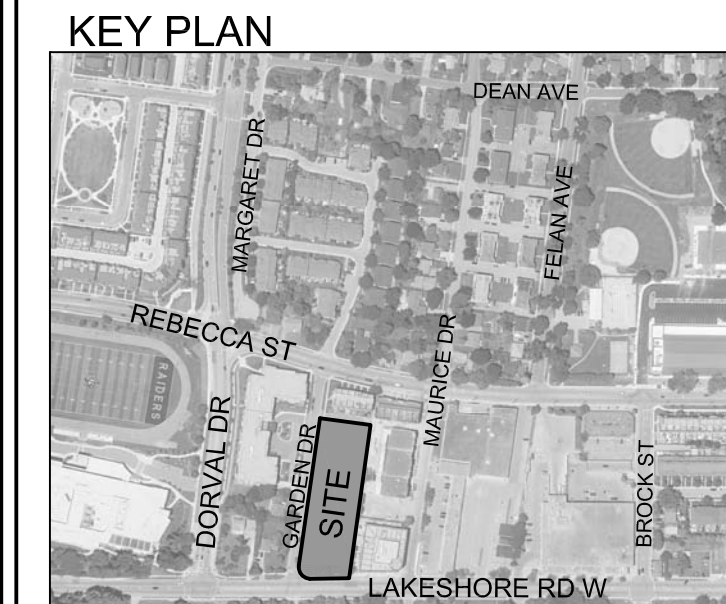
CONSENT FROM ADJACENT PROPERTY OWNERS IS REQUIRED PRIOR TO ANY HAZARDOUS TREE REMOVAL OR MITIGATION WORKS ON NEIGHBOURING TREES.

STORM SEWER TO BE INSTALLED WITH AUGERING EQUIPMENT TO AVOID DAMAGE TO EXISTING TREES



**GENERAL NOTES**

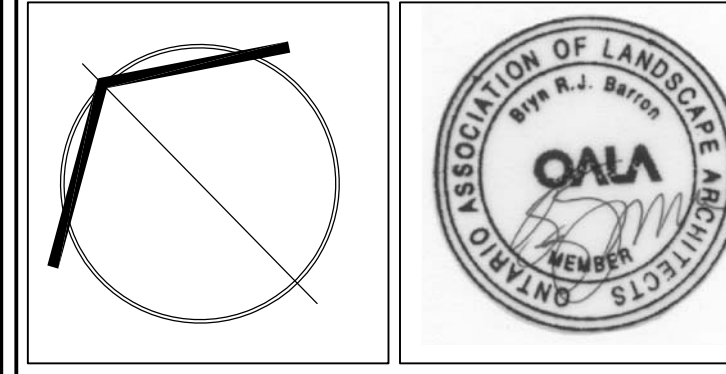
- VERIFY ALL DIMENSIONS.
- DO NOT SCALE DRAWINGS.
- REPORT ANY DISCREPANCIES, DISCOVERED ERRORS, OR OMISSIONS TO THE LANDSCAPE ARCHITECT BEFORE PROCEEDING.
- IT IS ADVISED THAT CONTRACTORS CONTACT THE LANDSCAPE ARCHITECT PRIOR TO CONSTRUCTION TO ENSURE THE USE OF THE LATEST REVISED DRAWINGS.
- DRAWINGS AND SPECIFICATIONS ARE THE PROPERTY OF THE LANDSCAPE ARCHITECT.



*Matthew C. Gerbes*  
**MATTHEW C. GERBES**  
 International Society of Arboriculture  
 Certified Arborist #0N-1144  
 Date: JULY 3rd, 2024

No.	DATE	REVISION	BY
2	JULY 3rd, 2024	ISSUED FOR SUBMISSION	BB
1	MAY 24, 2024	ISSUED FOR COORDINATION	BB

It is the responsibility of the Contractor and/or Owner to ensure that the drawings with the latest revisions are used for construction.



**SBK** 5770 HURONTARIO STREET, SUITE 320  
 MISSISSAUGA, ONTARIO, L4R 3G5  
 T: 416.695.4949 F: 905.712.3101  
 WWW.STRYBOS.COM

**STRYBOS BARRON KING**  
 LANDSCAPE ARCHITECTURE

PROJECT:  
**PROPOSED MIXED USE DEVELOPMENT**  
 PLAZACORP  
 109 GARDEN DRIVE  
 OAKVILLE, ONTARIO

DRAWING TITLE:  
**EXISTING TREE INVENTORY & PRESERVATION PLAN**

SCALE: 1:200	PROJECT No. 24-6010
DATE: MAY 23, 2024	DRAWING No. V100
DRAWN BY: T.S.	
CHECKED BY: B.B.	