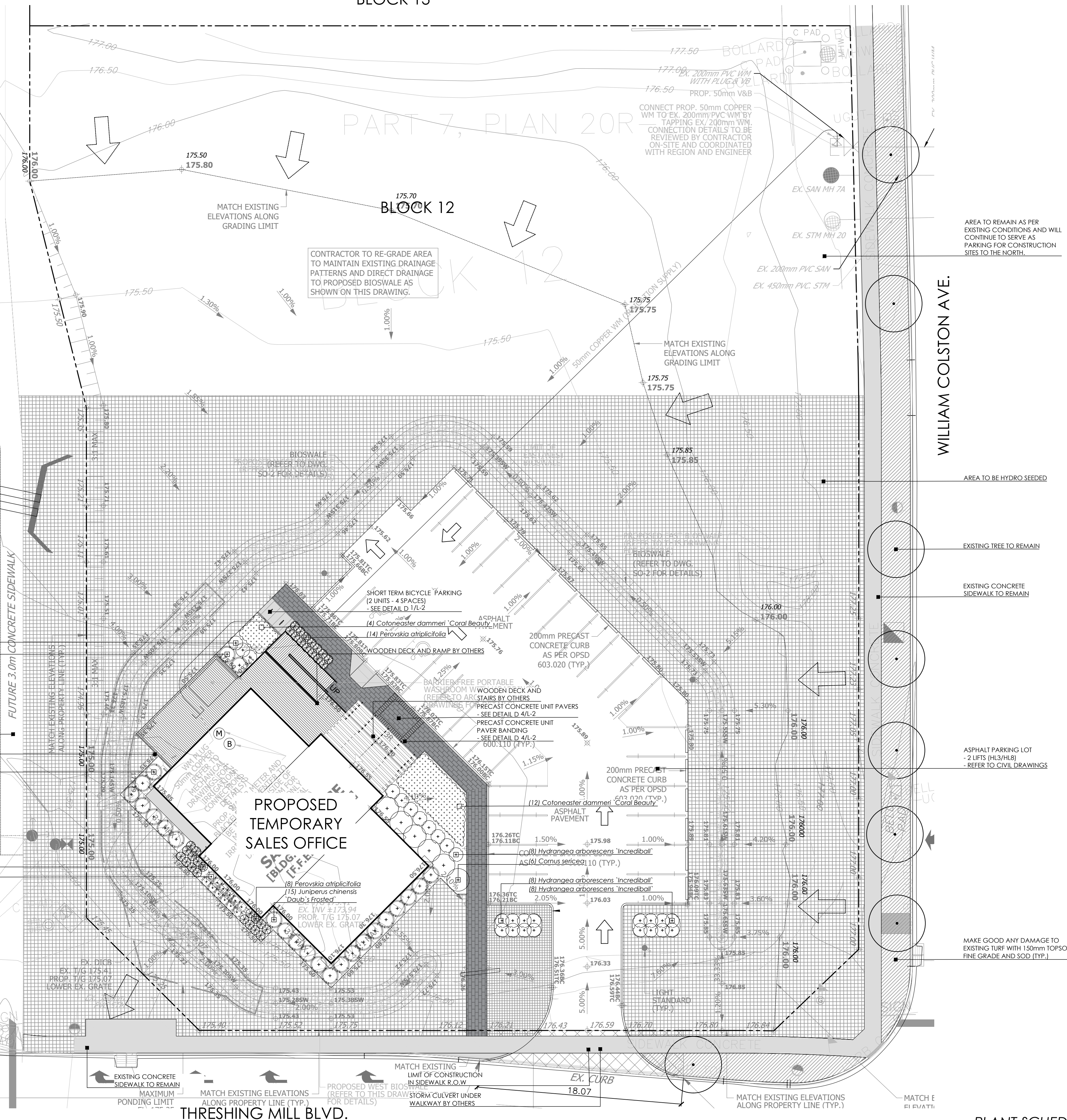


TRAFALGAR ROAD

BLOCK 13

PART 7, PLAN 20R

WILLIAM COLSTON AVE.



- (3) Hydrangea arborescens 'Incrediball'
(2) Juniperus chinensis 'Daub's Frosted'
REFER TO SITE PLAN FOR CONDITIONS OUTSIDE OF PROPERTY LINE
PERIMETER WALL SCREENING BY OTHERS
(7) Juniperus chinensis 'Daub's Frosted'
(10) Perovskia atriplicifolia
(12) Deschampsia cespitosa

THRESHING MILL BLVD.

LANDSCAPE NOTES:

- 1. All work to be carried out in accordance with by-laws and codes having jurisdiction over site location.
2. Complete all work to the satisfaction of the Landscape Architect.
3. Report any changes, discrepancies or substitutions to the Landscape Architect for review. Obtain approval from the Landscape Architect before proceeding.
...
25. For lighting information and power distribution refer to the electrical consultant's drawings.

HYDROSEED NOTES:

- 1. Areas to be hydroseeded with seed mix shall receive an application of naturalization seed at the rate of 25-30 kg/hectare or 2 kg/100m² for spot applications, in the following mixture:

Table with 3 columns: Seed Type, Percentage, and Notes. Includes Perennial Rye, Kentucky Bluegrass, and Creeping Red Fescue.

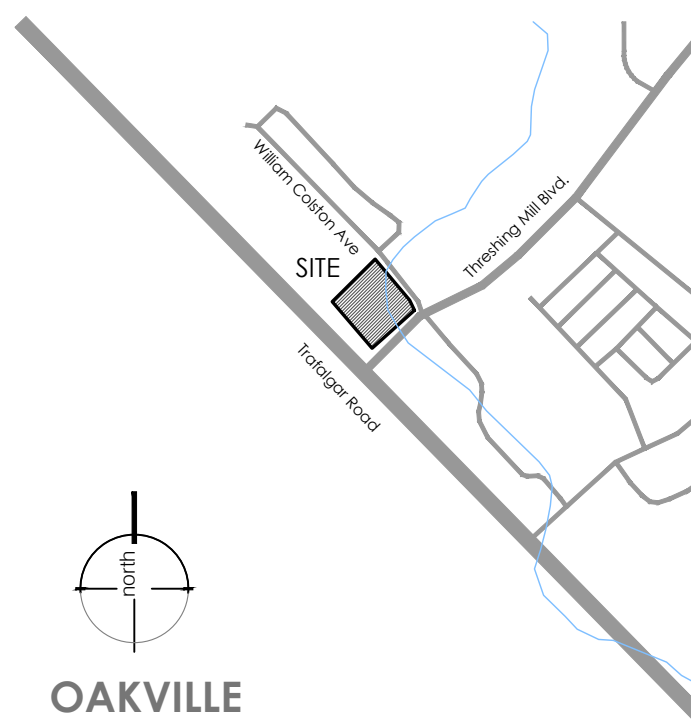
Supplied by: Ontario Seed Company (or approved equal)
P: 1-519-886-0557
W: www.osseeds.com

- 2. Contractor responsible for soil test to determine fertilizer rates. Results of soil test shall be provided to the Landscape Architect for review and approval.
3. Hydraulic mulch to be approved by the Landscape Architect shall be applied at the rate of 2100kg per hectare.
...
10. Latest date for seeding is October 15th. Areas seeded in fall will be accepted in following spring, one month after start of growing season provided acceptance conditions are fulfilled.

PLANT SCHEDULE

Table with 9 columns: Shrub/Perennial/Ground Covers, Botanical Name, Common Name, Size, and Remarks. Lists plants like Cotoneaster dammeri, Hydrangea arborescens, etc.

KEY MAP - N.T.S.



OAKVILLE

LEGEND

- property line
proposed deciduous tree
proposed shrub
proposed perennial
existing elevation
proposed elevation
min. 150mm topsoil, fine grade & hydro seed
precast concrete unit pavers

NOT FOR CONSTRUCTION
ISSUED FOR REVIEW & COMMENTS ONLY

REVISIONS/ SUBMISSIONS

Table with 3 columns: #, DATE, DESCRIPTION. Shows revision history from 1 to 6.

STAMP



CLIENT: Branthaven Homes

MUNICIPALITY: Town of Oakville

PROJECT: Block 23-24
Oakville Sales Centre
Oakville, ON

MUNICIPAL FILE NUMBER

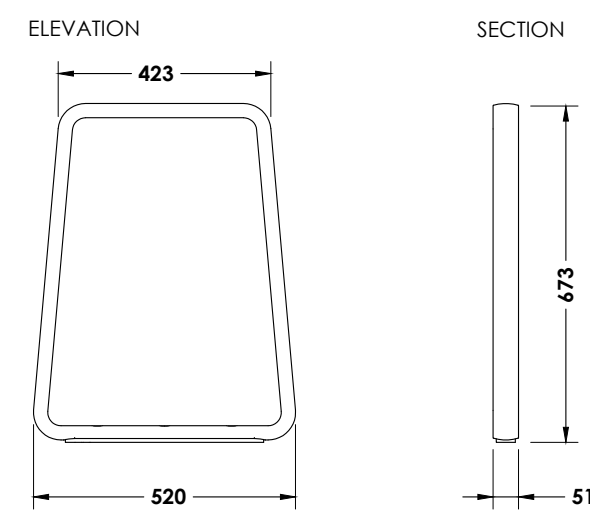
SHEET: Landscape Plan

L-1

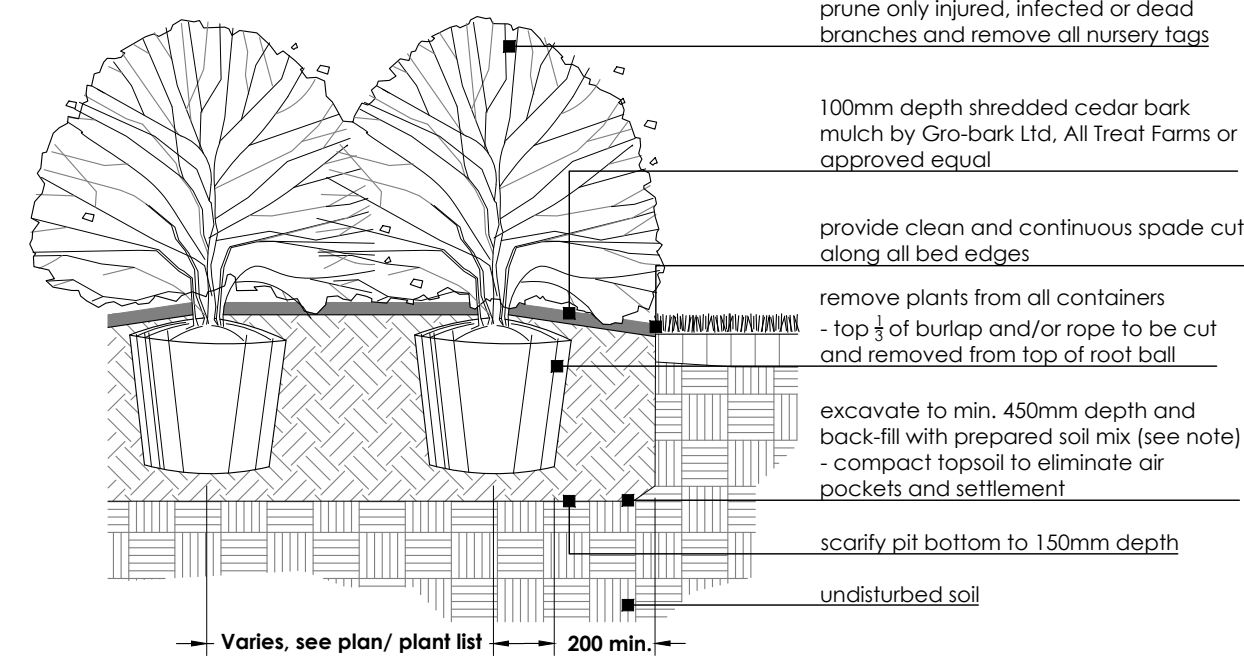
adesso design inc.
landscape architecture



69 John Street South, Suite 250
Hamilton, ON L8N 2B9
t. 905.526.8876
www.adessodesigninc.ca



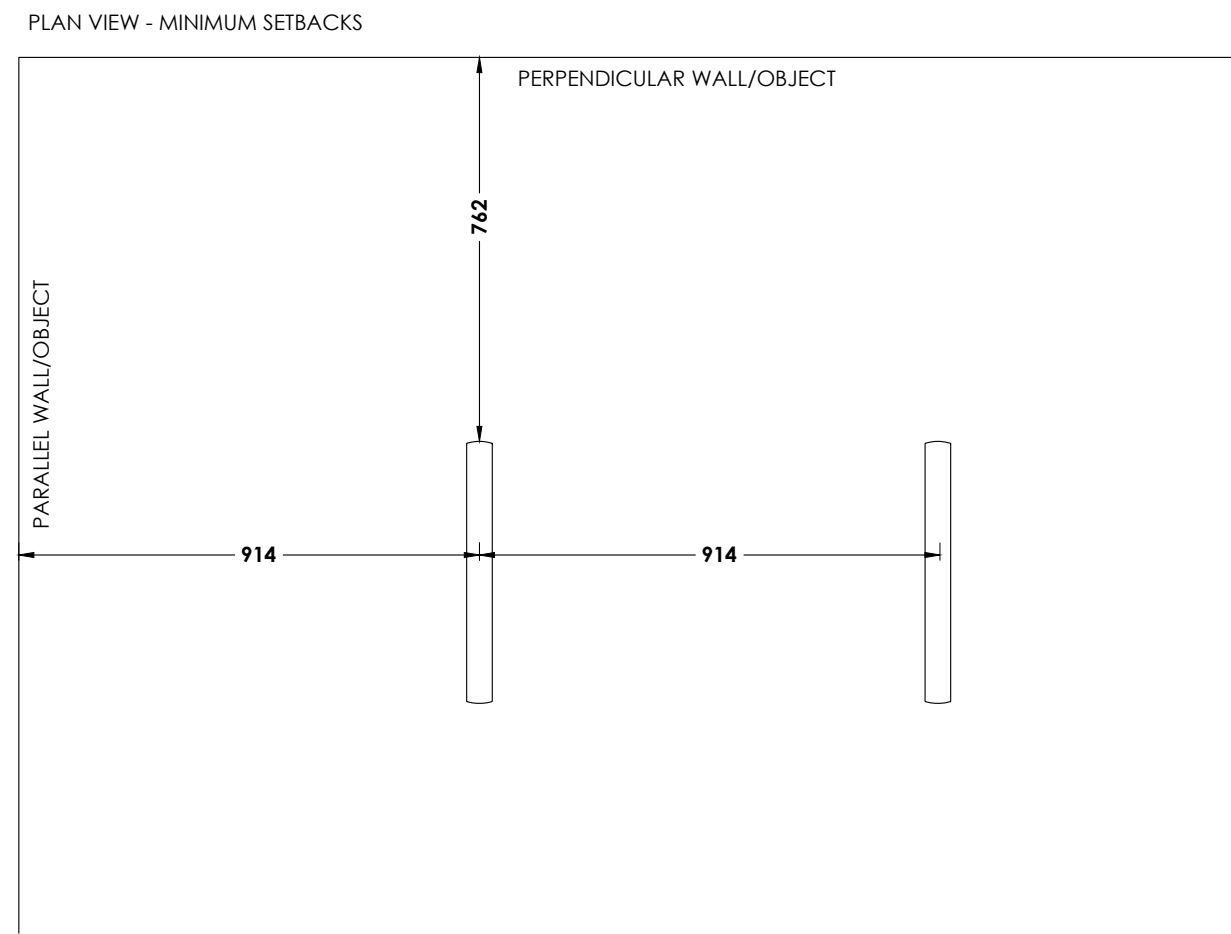
Maglin Bicycle Rack - ICONIC - MBR 2300-0001  
 COLOUR: Black (or approved equal)  
 UNITS: 2, see landscape plan for layout  
 CAPACITY: 2 Bikes  
 INSTALLATION: To be surface mounted. Refer to manufactures specifications.  
 SUPPLIED BY: Maglin Furniture Systems Ltd.  
 Woodstock, ON  
 T: 1.800.716.5506  
 E: sales@maglin.com



CONTAINER GROWN SHRUB

N.T.S.

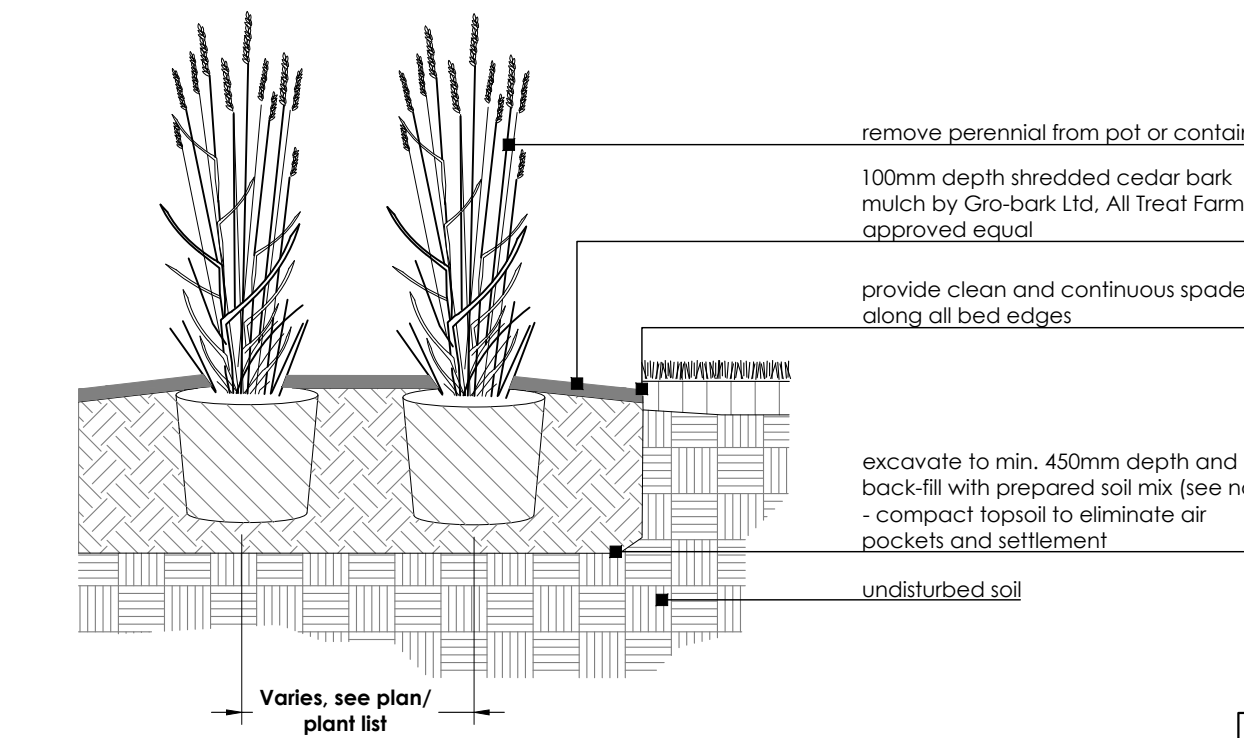
2  
L-2



ICONIC BIKE RACK BY MAGLIN (OR APPROVED EQUAL)

N.T.S.

1  
L-2



CONTAINER GROWN PERENNIAL

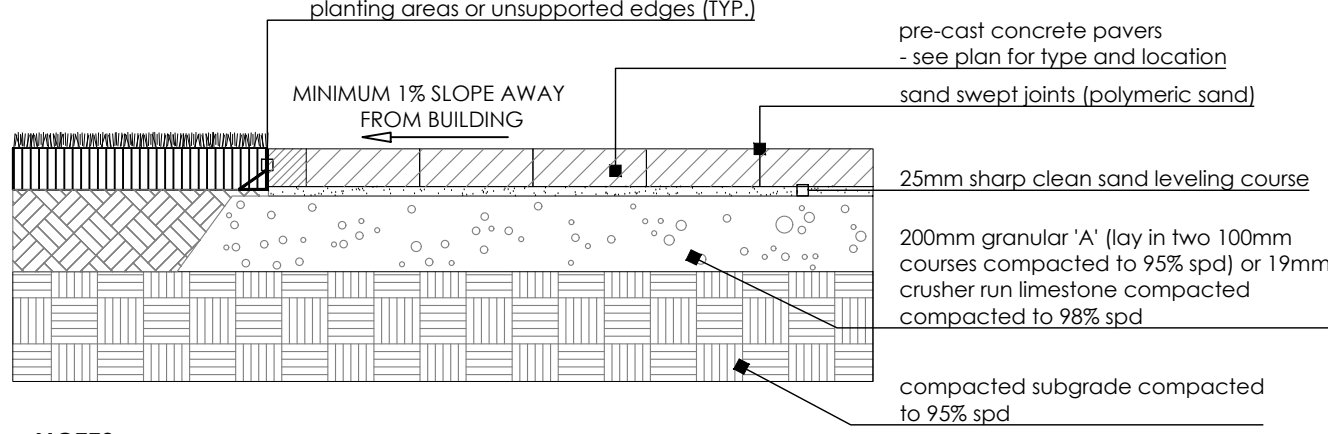
N.T.S.

3  
L-2

PLANTING NOTES:

- Soil mixture: four (4) parts native soil, one (1) part well rotted compost. If existing soil is not suitable provide triple mix topsoil or approved equal.
- Saucer shall be soaked with water and mulched immediately following planting.
- Matted shrubs shall be planted in continuous mulched beds unless otherwise noted.
- Staking schedule:
  - < 30mm caliper size/ 2500mm ht. - one stake
  - > 30mm caliper size/ 2500mm ht. - two stakes
  - > 70mm caliper - three stakes
- All support systems must be removed once tree is established.
- All trees to be straight and planted vertically regardless of slope.
- Top of root flare shall be positioned 50mm above grade.
- The following depths of soil are required for planting:
  - 15cm topsoil for sod;
  - 30cm of topsoil for perennials;
  - 45cm of topsoil for shrubs;
  - 90cm of topsoil for trees

SECTION

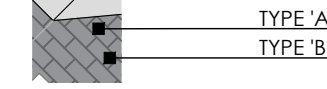


NOTES:

- Paver types are as follows (or approved equal):

TYPE	DESCRIPTION	PATTERN	SIZE	COLOUR
'A'	Industria Paver 200 Series by Techo-bloc	Linear Pattern 01	200 x 400	Onyx Black
'B'	Industria Paver 600 Series by Techo-bloc	Linear Pattern 02	300 x 600	Greyed Nickel

- Unit pavers are 100mm thick. Contractor to provide samples on site to be approved by Landscape Architect and/or Owner.



PRECAST CONCRETE PAVERS

N.T.S.

4  
L-2

NOT FOR CONSTRUCTION  
 ISSUED FOR REVIEW & COMMENTS ONLY

REVISIONS/ SUBMISSIONS

#	DATE	DESCRIPTION
1	2024-02-21	Issued for review
2	2024-02-28	Issued for review
3	2024-03-20	Issued for review
4	2024-04-01	Issued for preconsultation submission
5	2024-06-19	Issued for first SPA submission
6	2024-10-11	Issued for second SPA submission

STAMP



CLIENT  
 Branthaven Homes

MUNICIPALITY  
 Town of Oakville

PROJECT  
 Block 23-24  
 Oakville Sales Centre  
 Oakville, ON

MUNICIPAL FILE NUMBER

SHEET  
 Details

L-2

adesso design inc.  
 landscape architecture



69 John Street South, Suite 250  
 Hamilton, ON L8N 2B9  
 t: 905.526.8876  
 www.adessodesigninc.ca