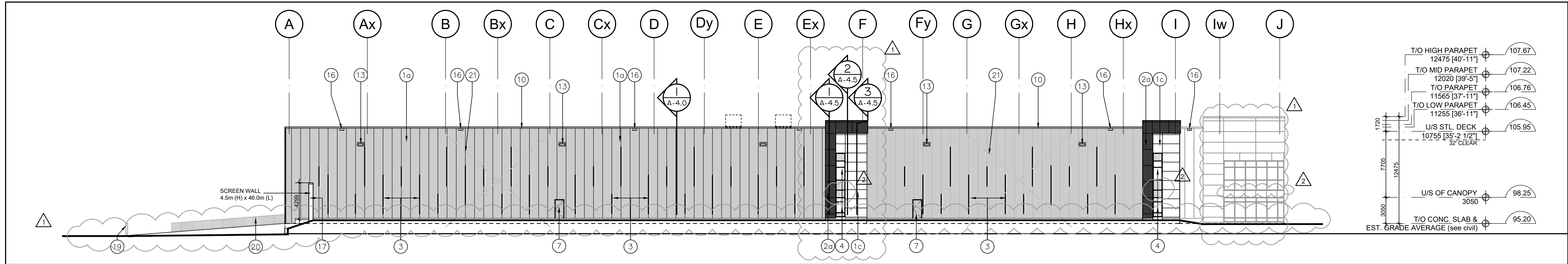
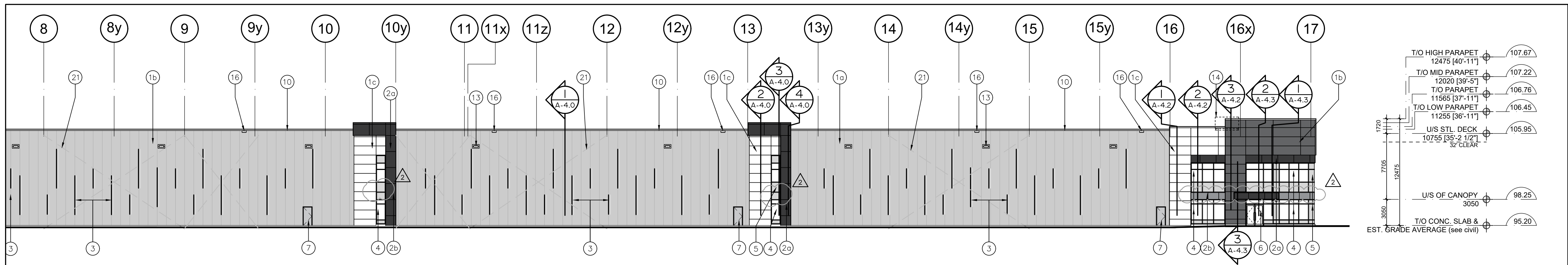


LEGEND

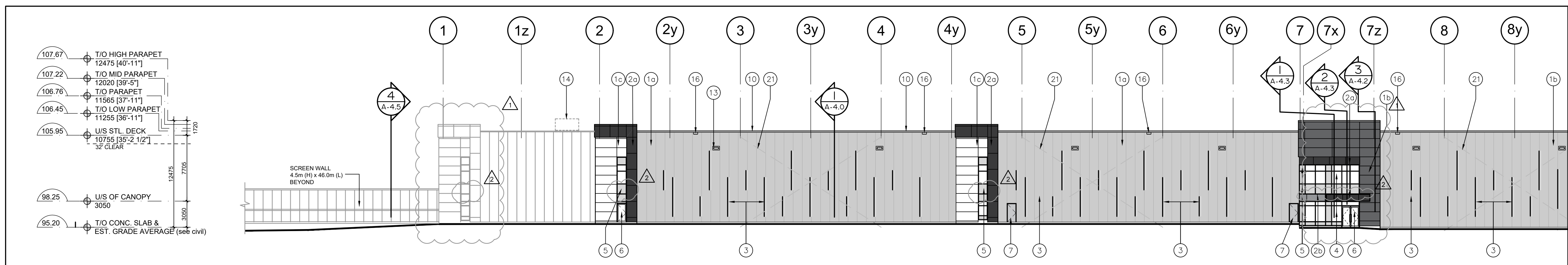
- 10a INSULATED METAL PANELS BY KINGSPAN KS SERIES WITH SHADOWLINE FINISH OR APPROVED EQUAL. COLOUR: LIGHT GREY. SAMPLE TO BE SUBMITTED FOR ARCHITECT'S APPROVAL.
- 10b INSULATED METAL PANELS BY KINGSPAN KS SERIES WITH SHADOWLINE FINISH OR APPROVED EQUAL. COLOUR: DARK GREY. SAMPLE TO BE SUBMITTED FOR ARCHITECT'S APPROVAL.
- 10c INSULATED METAL PANELS BY KINGSPAN KS SERIES WITH SHADOWLINE FINISH OR APPROVED EQUAL. COLOUR: WHITE. SAMPLE TO BE SUBMITTED FOR ARCHITECT'S APPROVAL.
- 20a PREFINISHED COMPOSITE ALUMINUM PANELS COLOUR: CHARCOAL
- 20b PREFINISHED COMPOSITE ALUMINUM PANELS COLOUR: LIGHT GREY
- 3 PREFINISHED METAL "FIN" (TWO LENGTHS -> 2250 or 4540mm). COLOUR: CHARCOAL GREY TO MATCH METAL PANELS.
- 4 WINDOW- THERMAL DOUBLE GLAZING (GREY TINT) IN PREFINISHED ALUMINUM CURTAIN WALL FRAMES. COLOUR OF CURTAIN WALL CAPS: BLACK ANODIZED ALUMINUM, CW BIRD-FRIENDLY VISUAL MARKERS
- 5 SPANDREL GLAZING IN PREFINISHED ALUMINUM CURTAIN WALL FRAMES. COLOUR OF SPANDREL: OPACI-COAT # 3-3747 COSMIC GREY; COLOUR OF CURTAIN WALL CAPS: BLACK ANODIZED ALUMINUM
- 6 CLEAR TEMPERED THERMAL GLASS AND ALUMINUM DOOR(S). COLOUR OF ALUMINUM TO MATCH CURTAIN WALL CAPS.
- 7 MAN DOOR - INSULATED HOLLOW METAL DOOR PAINT COLOUR: TO MATCH ADJACENT METAL PANEL
- 8 INSULATED HOLLOW METAL OVERHEAD DOOR C/W TEMPERED GLASS VIEW WINDOW. COLOUR TO BE GREY TO MATCH INSULATED METAL PANELS. C/W DOCK SEAL, DOCK LEVELLER AND DOCK BUMPERS.
- 9 INSULATED HOLLOW METAL OVERHEAD DOOR C/W TEMPERED GLASS VIEW WINDOW. COLOUR TO BE GREY TO MATCH INSULATED METAL PANELS.
- 10 PREFINISHED METAL CAP FLASHING. COLOUR TO MATCH METAL PANELS BELOW.
- 11 STEEL GRATE EXTERIOR STAIR. PRIMED & MARINE OIL BASE PAINTED GREY.
- 12 TINTED THERMAL GLAZING IN ALUMINUM CURTAIN WALL FRAMES. COLOUR OF GLASS AND FRAMES TO MATCH WINDOWS, TAG #4 (GL-1). CAPS TO BE 50.8mm WIDE.
- 13 LIGHTING - WALL PAC. REFER TO ELECTRICAL DWGS.
- 14 ROOF TOP UNITS. TO BE SCREENED FROM PUBLIC VIEW.
- 15 STEEL GRATE EXTERIOR LADDER AND PLATFORM FOR FUEL LINE ACCESS. PRIMED & MARINE OIL BASE PAINTED GREY.
- 16 RAIN WATER RELIEF SCUPPER.
- 17 RESERVED
- 18 STORM PROOF LOUVER. REFER TO MECHANICAL DRAWINGS.
- 19 PIPE BOLLARD, TYPE 'A' AS PER NOTE MS-25 ON SHEET A-0.0.
- 20 GALVANIZED GUARD SYSTEM. T/O GUARD SYSTEM @ 1070mm ABOVE TOP OF RETAINING WALL.
- 21 STRUCTURAL BRACING. REFER TO STRUCT. DWGS.



3 North Elevation
A-3.0 Scale = 1:250



2 Partial West Elevation
A-3.0 Scale = 1:250



1 Partial West Elevation
A-3.0 Scale = 1:250

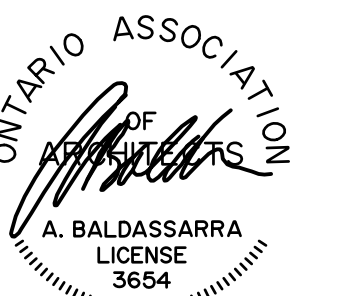
| No. | ISSUED | DATE |
|-----|-------------------------------------|----------------|
| 1 | ISSUED FOR COORDINATION | MAR. 30, 2021 |
| 2 | ISSUED FOR SPA | APR. 9, 2021 |
| 3 | RE-ISSUED FOR SPA | DEC. 15, 2021 |
| 4 | RE-ISSUED FOR SPA | DEC. 16, 2022 |
| 5 | ISSUED FOR STEEL AND PRECAST TENDER | FEB. 17, 2023 |
| 6 | REISSUED FOR STEEL TENDER | SEPT. 18, 2023 |
| 7 | REISSUED FOR SPA | DEC. 19, 2023 |
| 8 | REISSUED FOR CITY REVIEW | MAY 10, 2024 |

| | | |
|---|------------------|---------------|
| 2 | REVISED AS NOTED | AUG. 25, 2023 |
| 1 | REVISED AS NOTED | AUG. 04, 2023 |

| No. | REVISION | DATE |
|-----|----------|------|
|-----|----------|------|

BALDASSARRA
Architects Inc.

30 Great Gulf Drive, Unit 20 | Concord ON | L4K 0K7
T. 905.660.0722 | www.baldassarra.ca



OWNERS INFORMATION:

FENGATE

772 Winston Churchill Blvd.

Oakville, Ontario

ELEVATIONS
Building B

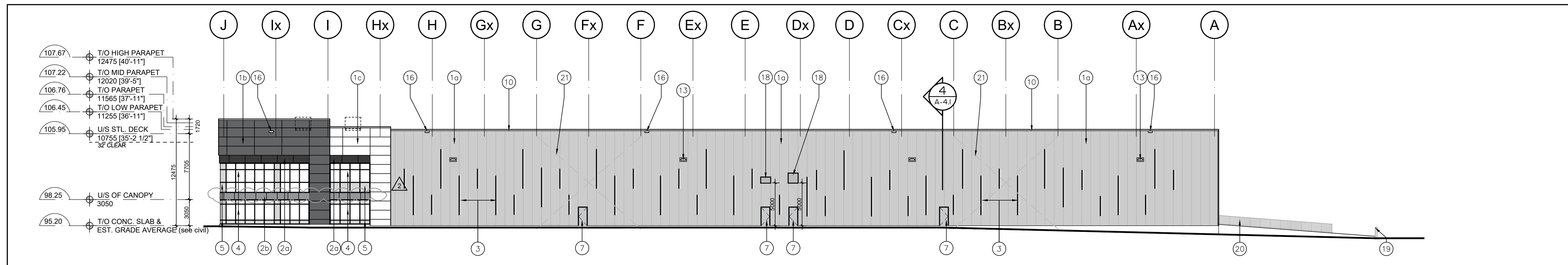
| DATE: | DRAWN BY: | CHECKED: | SCALE: |
|-----------|-----------|----------|----------|
| MAR. 2021 | HP | | AS NOTED |

PROJECT No. 22-77 B

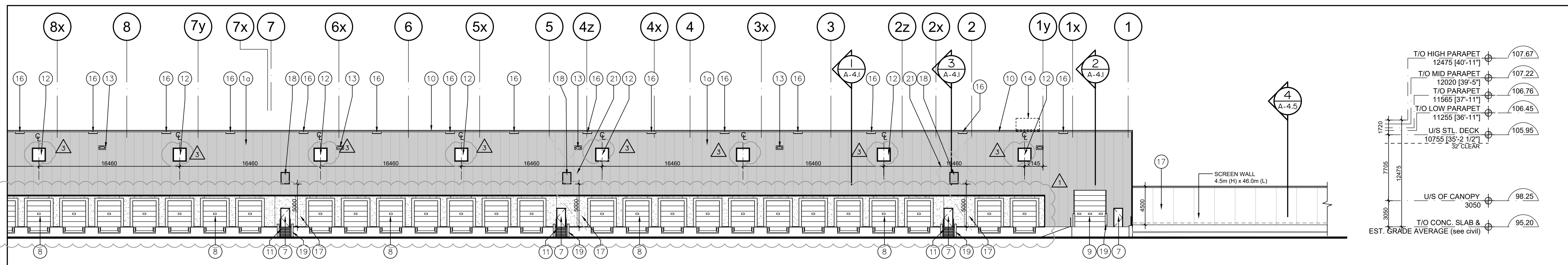
DRAWING No. A-3.0

LEGEND

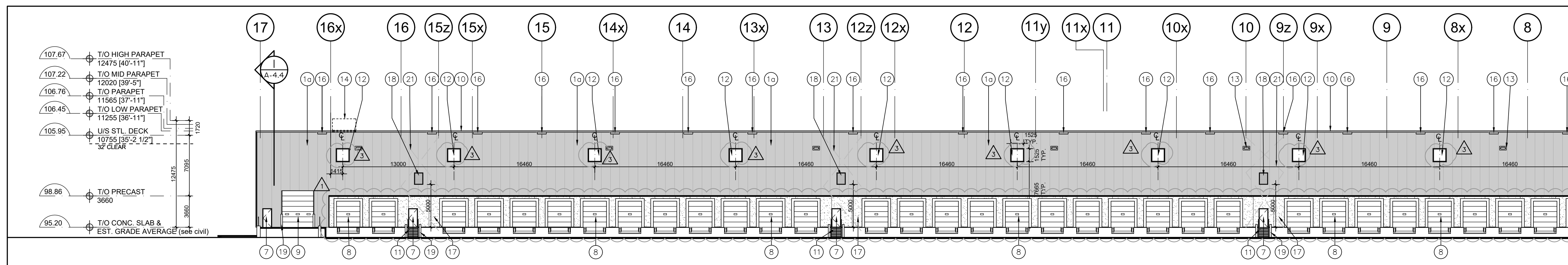
- 10a INSULATED METAL PANELS BY KINGSPAN KS SERIES WITH SHADOWLINE FINISH OR APPROVED EQUAL. COLOUR: LIGHT GREY. SAMPLE TO BE SUBMITTED FOR ARCHITECT'S APPROVAL.
- 10b INSULATED METAL PANELS BY KINGSPAN KS SERIES WITH SHADOWLINE FINISH OR APPROVED EQUAL. COLOUR: DARK GREY. SAMPLE TO BE SUBMITTED FOR ARCHITECT'S APPROVAL.
- 10c INSULATED METAL PANELS BY KINGSPAN KS SERIES WITH SHADOWLINE FINISH OR APPROVED EQUAL. COLOUR: WHITE. SAMPLE TO BE SUBMITTED FOR ARCHITECT'S APPROVAL.
- 20a PREFINISHED COMPOSITE ALUMINUM PANELS COLOUR: CHARCOAL
- 20b PREFINISHED COMPOSITE ALUMINUM PANELS COLOUR: LIGHT GREY
- 3 PREFINISHED METAL "FIN" (TWO LENGTHS -> 2250 or 4540mm). COLOUR: CHARCOAL GREY TO MATCH METAL PANELS.
- 4 WINDOW- THERMAL DOUBLE GLAZING (GREY TINT) IN PREFINISHED ALUMINUM CURTAIN WALL FRAMES. COLOUR OF CURTAIN WALL CAPS: BLACK ANODIZED ALUMINUM, CW BIRD-FRIENDLY VISUAL MARKERS
- 5 SPANDREL GLAZING IN PREFINISHED ALUMINUM CURTAIN WALL FRAMES. COLOUR OF SPANDREL: OPACI-COAT # 3-3747 COSMIC GREY; COLOUR OF CURTAIN WALL CAPS: BLACK ANODIZED ALUMINUM
- 6 CLEAR TEMPERED THERMAL GLASS AND ALUMINUM DOOR(S). COLOUR OF ALUMINUM TO MATCH CURTAIN WALL CAPS.
- 7 MAN DOOR - INSULATED HOLLOW METAL DOOR PAINT COLOUR: TO MATCH ADJACENT METAL PANEL
- 8 INSULATED HOLLOW METAL OVERHEAD DOOR C/W TEMPERED GLASS VIEW WINDOW. COLOUR TO BE GREY TO MATCH INSULATED METAL PANELS. C/W DOCK SEAL, DOCK LEVELLER AND DOCK BUMPERS.
- 9 INSULATED HOLLOW METAL OVERHEAD DOOR C/W TEMPERED GLASS VIEW WINDOW. COLOUR TO BE GREY TO MATCH INSULATED METAL PANELS.
- 10 PREFINISHED METAL CAP FLASHING. COLOUR TO MATCH METAL PANELS BELOW.
- 11 STEEL GRATE EXTERIOR STAIR. PRIMED & MARINE OIL BASE PAINTED GREY.
- 12 TINTED THERMAL GLAZING IN ALUMINUM CURTAIN WALL FRAMES. COLOUR OF GLASS AND FRAMES TO MATCH WINDOWS, TAG #4 (GL-1). CAPS TO BE 50.8mm WIDE.
- 13 LIGHTING - WALL PAC. REFER TO ELECTRICAL DWGS.
- 14 ROOF TOP UNITS. TO BE SCREENED FROM PUBLIC VIEW.
- 15 STEEL GRATE EXTERIOR LADDER AND PLATFORM FOR FUEL LINE ACCESS. PRIMED & MARINE OIL BASE PAINTED GREY.
- 16 RAIN WATER RELIEF SCUPPER.
- 17 RESERVED
- 18 STORM PROOF LOUVER. REFER TO MECHANICAL DRAWINGS.
- 19 PIPE BOLLARD, TYPE 'A' AS PER NOTE MS-25 ON SHEET A-0.0.
- 20 GALVANIZED GUARD SYSTEM. T/O GUARD SYSTEM @ 1070mm ABOVE TOP OF RETAINING WALL.
- 21 STRUCTURAL BRACING. REFER TO STRUCT. DWGS.



3 South Elevation
A-3.0 Scale = 1:250



2 Partial East Elevation
A-3.0 Scale = 1:250



1 Partial East Elevation
A-3.0 Scale = 1:250

| No. | ISSUED | DATE |
|-----|-------------------------------------|----------------|
| 1 | ISSUED FOR COORDINATION | MAR. 30, 2021 |
| 2 | ISSUED FOR SPA | APR. 9, 2021 |
| 3 | RE-ISSUED FOR SPA | DEC. 15, 2021 |
| 4 | RE-ISSUED FOR SPA | DEC. 16, 2022 |
| 5 | ISSUED FOR STEEL AND PRECAST TENDER | FEB. 17, 2023 |
| 6 | REISSUED FOR STEEL TENDER | SEPT. 18, 2023 |
| 7 | REISSUED FOR SPA | DEC. 19, 2023 |
| 8 | REISSUED FOR CITY REVIEW | MAY 10, 2024 |

| | | |
|---|------------------|---------------|
| 3 | REVISED AS NOTED | DEC. 22, 2023 |
| 2 | REVISED AS NOTED | AUG. 25, 2023 |
| 1 | REVISED AS NOTED | AUG. 04, 2023 |



30 Great Gulf Drive, Unit 20 | Concord ON | L4K 0K7
T. 905.660.0722 | www.baldassarra.ca



OWNERS INFORMATION:



772 Winston Churchill Blvd.

Oakville, Ontario

ELEVATIONS
Building B

| DATE: | DRAWN BY: | CHECKED: | SCALE: |
|-----------|-----------|----------|----------|
| MAR. 2021 | HP | | AS NOTED |

22-77 B A-3.1