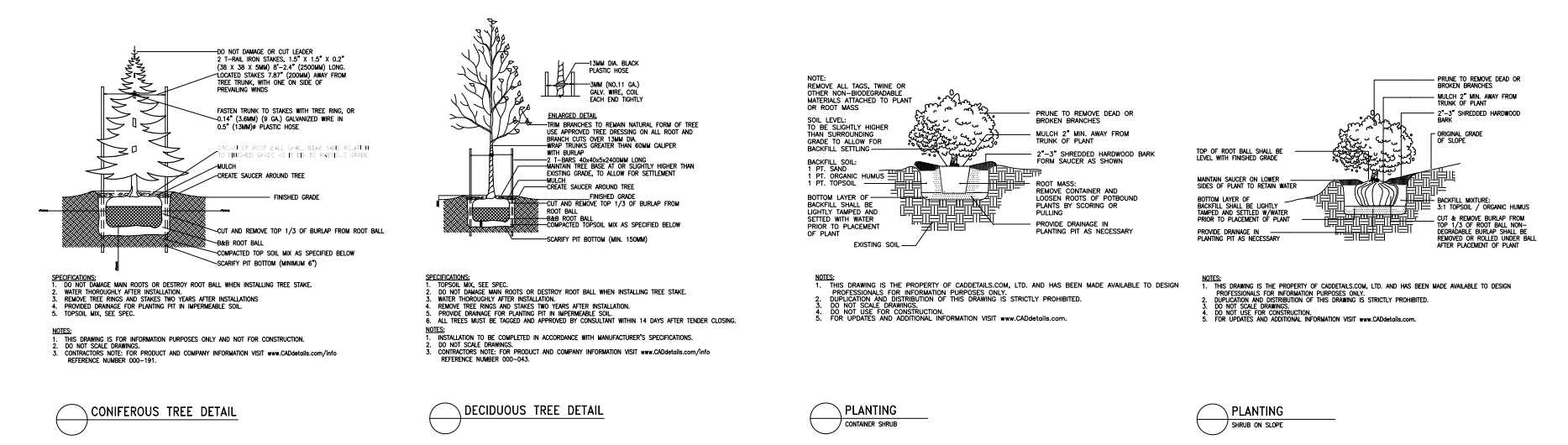
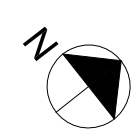
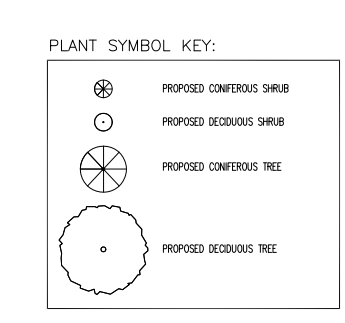


Issued:

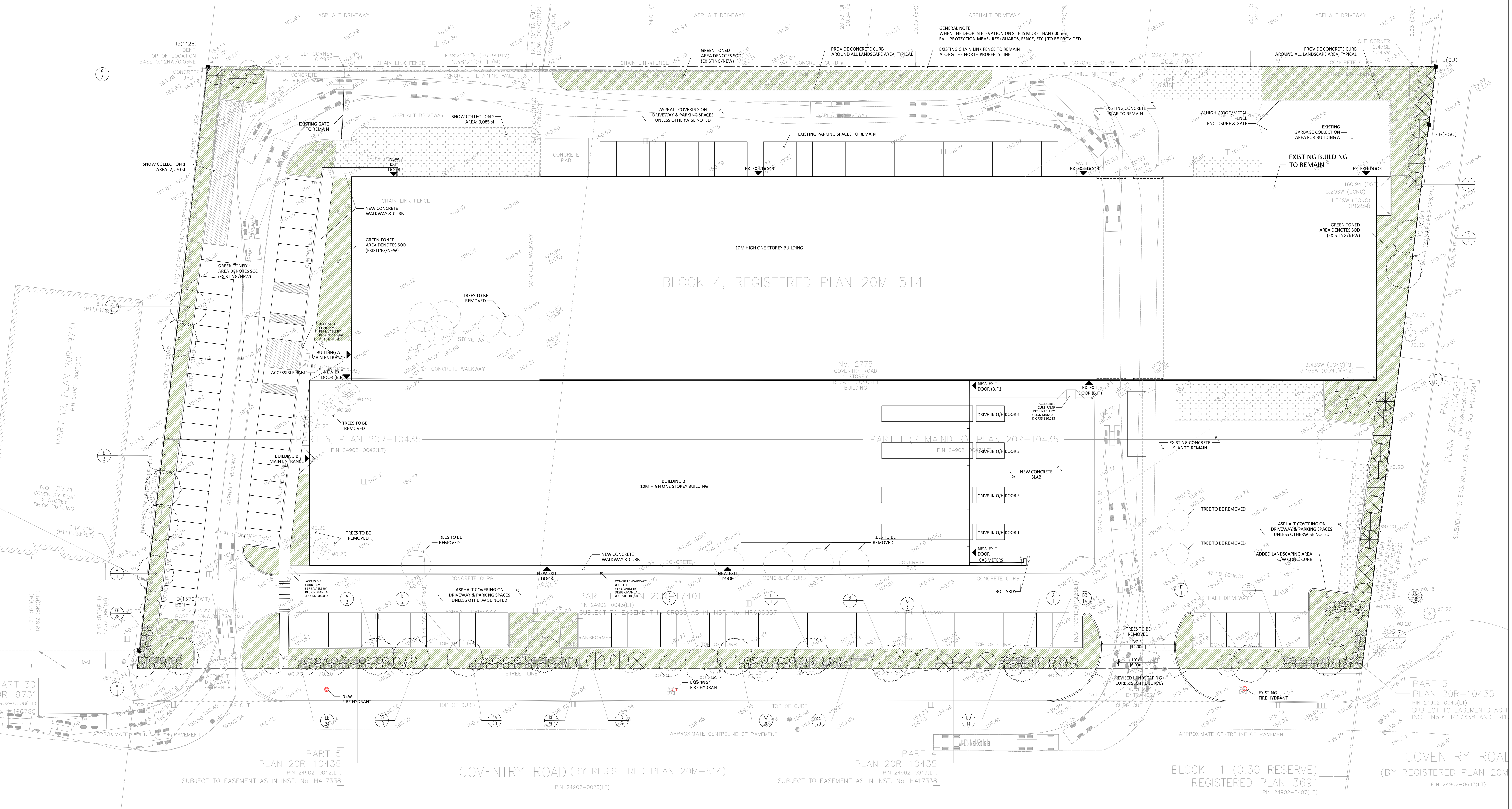
Revisions to SPA	Jan. 10, 2025
Issued for SPA	Sept. 13, 2024
Issued for Coordination	August 25, 2024
Issued for Coordination	July 8, 2024
Issued for Coordination	May 15, 2024
Issued for Coordination	Apr. 23, 2024
Issued for Coordination	Jan. 29, 2024
Description:	Date:



KEY	QTY	BOTANICAL NAME	COMMON NAME	SIZE & SPACING	REMARKS
A	7	ACER FRIEMANII	FRIEMANII	30mm CALIPER	WIDE BASKET
B	3	ACERUCIA GLABRA	SPICE BUCKLE	30mm CALIPER	WIDE BASKET
C	2	QUERCUS ROBUR	DOWNY HAWK	30mm CALIPER	WIDE BASKET
D	3	QUERCUS LIXA	YALOWOOD	30mm CALIPER	WIDE BASKET
E	3	FAUCIA GRANDIFLORA	AMERICAN BEECH	30mm CALIPER	WIDE BASKET
F	19	PIEA ALABICA	WHITE SPRUCE	200mm HEIGHT	WIDE BASKET
G	9	PIEA SYRABIA	WHITE PINE	200mm HEIGHT	WIDE BASKET
HA	40	CORNUS SERICEA	RED DOGWOOD	80mm HEIGHT, PLANT @ 100mm O.C.	CONCRETE
HB	32	EDONIA ALATA	BURNING BUSH	80mm HEIGHT, PLANT @ 100mm O.C.	CONCRETE
HC	18	HEBE ARBOREA	FLORING CORONAT	80mm HEIGHT, PLANT @ 100mm O.C.	CONCRETE
HD	34	JANQUETIA CHRYSOBOLUS	FRANGULA JARVIS	80mm SPREAD, PLANT @ 90mm O.C.	CONCRETE
HE	44	JANQUETIA SARMA	BUFFALO JARVIS	80mm SPREAD, PLANT @ 90mm O.C.	CONCRETE
HF	46	TOXUS MEDIA	DOGWOOD	80mm SPREAD, PLANT @ 90mm O.C.	CONCRETE



NOTE: ALL TREES AND SHRUBS SHALL BE CONTAINED IN PROPER PLANTING BEDS, ALL OTHER SOFT AREAS SHALL BE SODDED.



John A. Russo, OALA, CSLA
 Landscape Architect
 5 Weldrick Rd. W., Suite 108
 Richmond Hill, ONTARIO
 L4C 8S9
 Tel: 416-809-2641

General Notes:
 1. These Contract Documents are the property of the Architect. The Architect bears no responsibility for the interpretations of these documents by the Contractor. Upon written application the Architect will provide written clarification or supplementary information regarding the intent of the Contract Documents. The Architect will review Shop Drawings submitted by the Contractor for design conformance only.
 2. Drawings are not to be scaled for construction. Contractor to verify all existing conditions and dimensions required to perform the Work and report any discrepancies with the Contract Documents to the Architect before commencing work.
 3. Positions of exposed or finished mechanical or electrical devices, fittings, and fixtures are indicated on the Architectural drawings. The locations shown on the Architectural drawings govern over the Mechanical and Electrical drawings. Those items not clearly located will be located as directed by the Architect.

ALMA GROUP
ENGINEERING

3601 Highway 7 East, Unit 1004
 Markham, ON L3R 0M5
 Tel: 289-597-3911
 Email: info@alma-engineering.com
 www.alma-engineering.com

Rostami Atash

T. 416 230 3467
 www.rostamiatash.ca

RENOVATION & ADDITION TO MANUFACTURING FACILITY
 2775 Coventry Rd.,
 Oakville, Ontario
 L6H 5V9

PROPOSED LANDSCAPE PLAN

Project No.: 2401
 Scale: 1:300
 Date: Jan., 2024
 Drawn by: BA, HR

A1.11