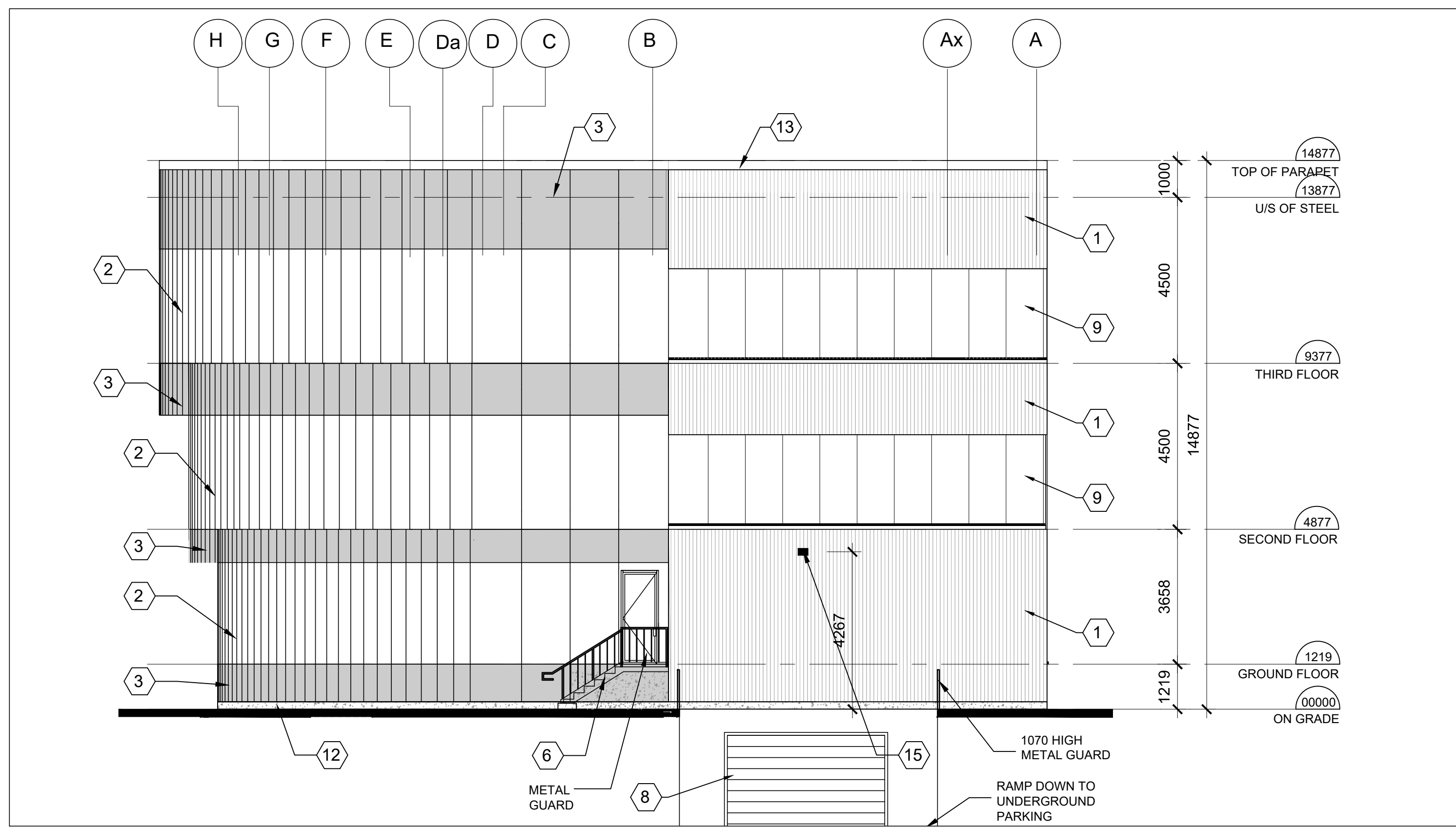
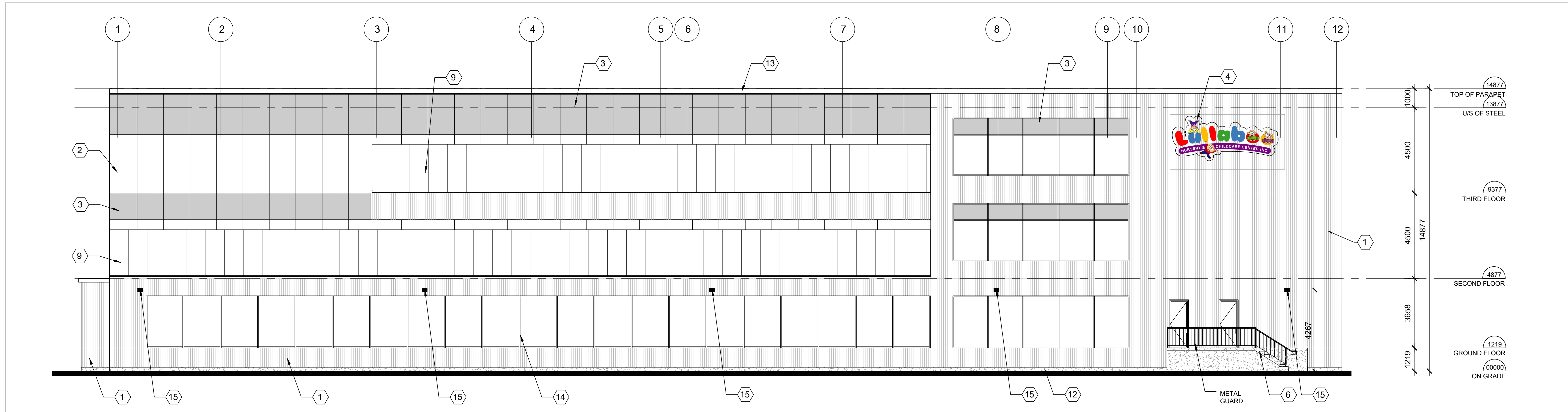


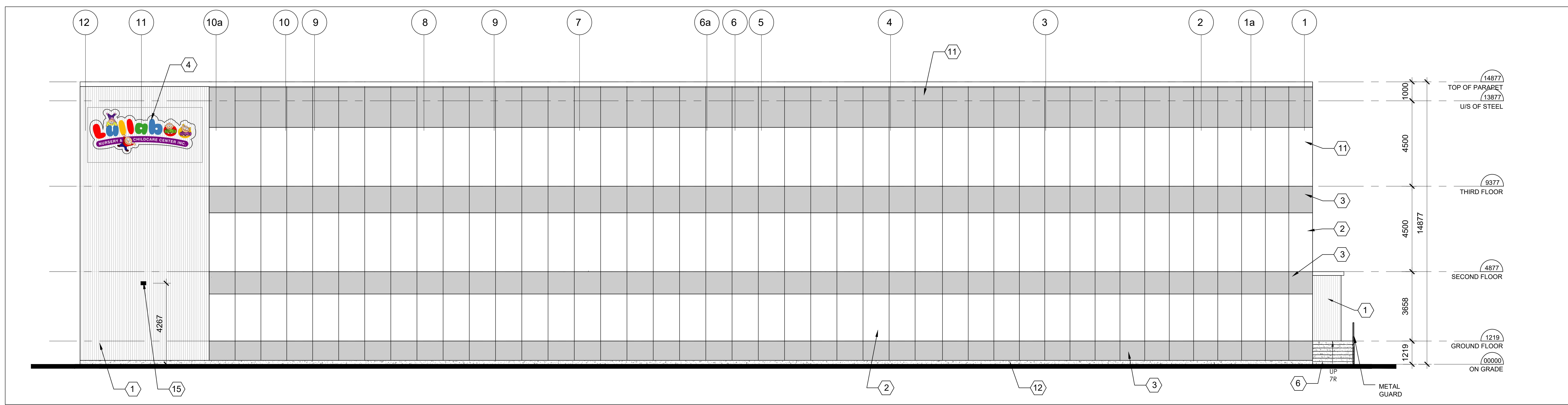
4 SOUTH ELEVATION FACING DUNDAS STREET
A-300 SCALE: 1:100



3 NORTH ELEVATION
A-300 SCALE: 1:100



2 WEST ELEVATION
A-300 SCALE: 1:100



1 EAST ELEVATION FACING SWEETWATER GATE
A-300 SCALE: 1:100

- EXTERIOR MATERIALS & FINISHES:**
- 1 NORWEGIAN FLUTED SIDING-PERUVIAN TEAK
 - 2 WHITE TINTED WINDOW KAWNEER 1600T SYSTEM
 - 3 WHITE TINTED SPANREL GLASS KAWNEER 1600T SYSTEM
 - 4 SIGNAGE BY TENANT
 - 5 DOUBLE 8'14" x 2'10" ANOD. ALUM. ENTRANCE DOORS
 - 6 LOW WHITE TINTED GLASS AND POWER DOOR OPERATOR
 - 7 CONCRETE STAIRS WITH METAL HANDRAIL
 - 8 WALL MOUNTED LIGHTING FIXTURE
 - 9 4270W x 4800W OVERHEAD DOOR (PAINTED)
 - 10 2400 HIGH GUARD RAIL
 - 11 WHITE TINTED GLASS DOOR
 - 12 PERFORATED METAL SCREEN
 - 13 CONCRETE BASE
 - 14 ALUMINUM TRIM
 - 15 WHITE TINTED GLAZING ALUMINUM WINDOW
 - 16 WALL MOUNTED LIGHTING FIXTURE

OWNER
LULLABOO NURSERY AND
CHILDCARE CENTRE INC.

NO.	DATE	REVISIONS	BY
2	NOV.14.24	ISSUED FOR RE-SUBMISSION	RA
1	AUG.31.24	ISSUED FOR 1ST SPA SUBMISSION	RA

DRAWING ISSUE

DATE	PARTICULARS	BY
	Issued for Design Approval	
	Issued for Site Plan Approval	
	Issued for Pricing and Budgeting	
	Issued for Building Permit	
	Issued for Tendering	
	Issued for Construction	
	Issued for Record Set of Drawg.	

This drawing, as an instrument of service, is provided by and is the property of Venchiarutti Gagliardi Architect Inc. The contractor must verify and accept responsibility for all dimensions and conditions on site and must notify Venchiarutti Gagliardi Architect Inc. of any variations from the supplied information.

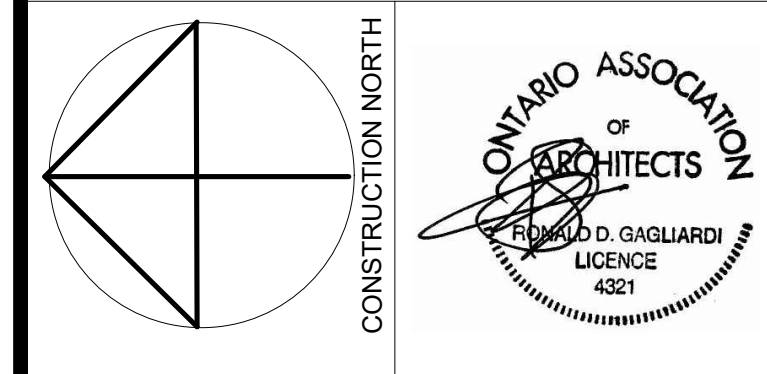
Venchiarutti Gagliardi Architect Inc. is not responsible for the accuracy of survey, structural, mechanical, electrical, etc. engineering information shown on this drawing. Refer to the appropriate engineering drawings before proceeding with the work.

Construction must conform to all applicable codes and requirements of authorities having jurisdiction. This drawing is not to be scaled.

Venchiarutti Gagliardi Architect Inc. is not responsible for any environmental conditions, geotechnical conditions or any pollutants found on site.

All architectural symbols indicated are graphic representations only.

This drawing is not to be used for construction purposes until the architectural seal is signed by the Architect of Record.



VGA Venchiarutti Gagliardi Architect Inc.
2651 John Street, Unit 18, Markham, ON L3R 2W5
T 905-477-1065 F 905-477-1067
www.vgarch.net

PROJECT
PROPOSED TWO STOREY DAYCARE
3010 SWEETWATER GATE
OAKVILLE, ONTARIO

DRAWING NAME
EXTERIOR ELEVATIONS

SCALE	DATE OF DWG.	PROJECT NO.
AS NOTED	NOV.18.2024	23019
DRAWN BY	SHEET NO.	
RA	A-300	SPA
CHKD BY	ET	

©2019 - The above Drawing/Document/Detail Drawing/2-D, 3-D, Architectural/Space/2024/11/18/24

LAST PLOTTING DATE: NOV/18/2024