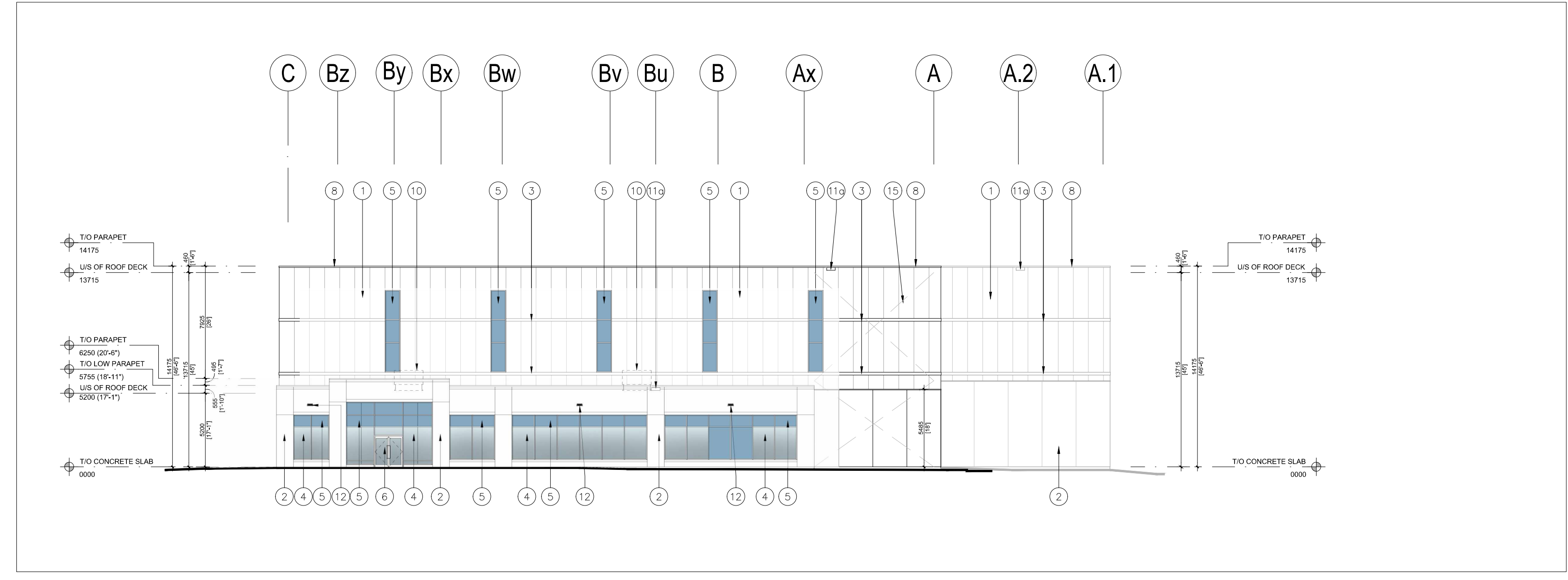
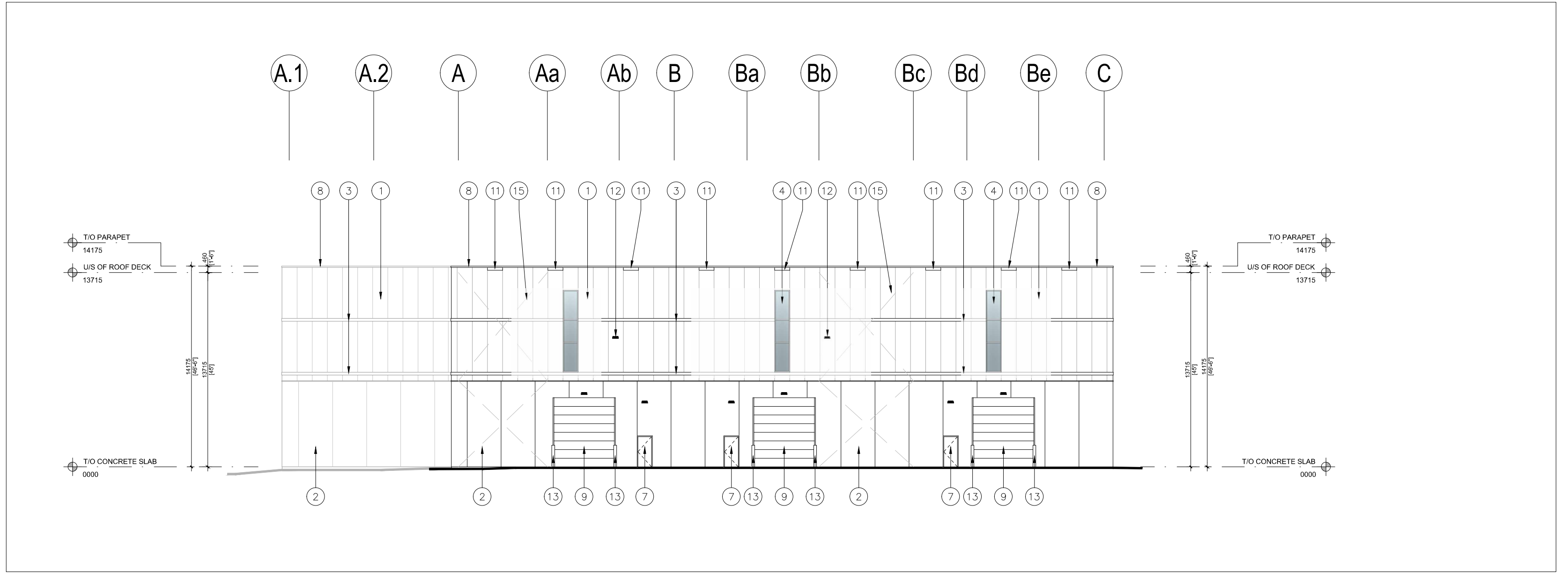


No.	ISSUED	DATE
1	ISSUED FOR SPA	AUG. 16, 2024
2	RE-ISSUED FOR SPA	OCT. 17, 2024

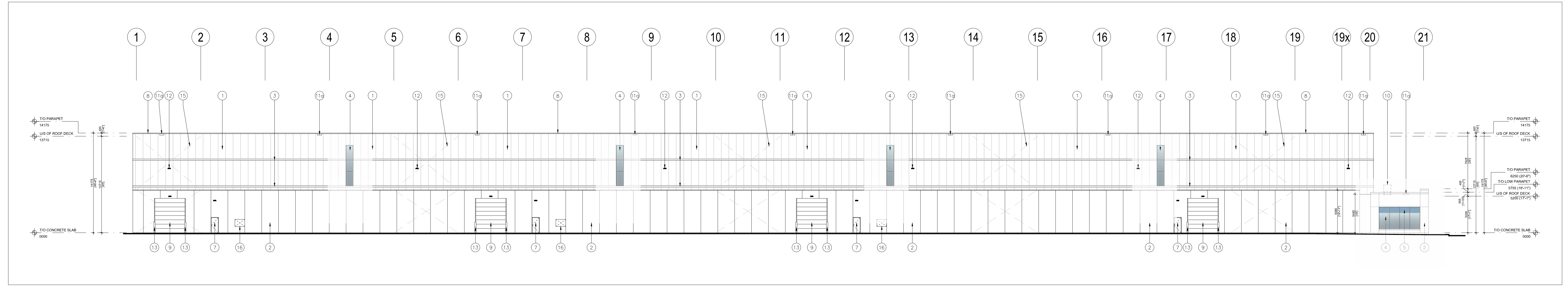
- LEGEND**
- ① INSULATED METAL PANELS. COLOUR TO BE WHITE. KINGSPAN OR APPROVED EQUAL.
 - ② PRECAST CONCRETE WITH EXPOSED AGGREGATE FINISH. COLOUR/FINISH TO BE WHITE GALCITE.
 - ③ ACCENT BAND. COLOUR TO BE WHITE.
 - ④ THERMAL DOUBLE GLAZING IN PREFINISHED ALUMINIUM CURTAIN WALL FRAMES.
 - ⑤ SPANDREL GLAZING IN PREFINISHED ALUMINIUM CURTAIN WALL FRAMES. COLOUR OF SPANDREL: BLUE.
 - ⑥ ALUMINIUM AND TEMPERED THERMAL GLASS DOORS IN ALUMINIUM CURTAIN WALL DOOR FRAMING SYSTEM. GLASS TO BE CLEAR. ALUMINIUM COLOUR TO MATCH WINDOW GLAZING SYSTEM ALUMINIUM COLOUR.
 - ⑦ INSULATED PREFINISHED METAL DOOR IN PRESSED STEEL THERMAL FRAME. DOOR AND FRAME PAINTED TO MATCH ADJACENT WALL COLOUR.
 - ⑧ PREFINISHED METAL COPING. COLOUR TO MATCH ADJACENT MATERIAL DIRECTLY BELOW.
 - ⑨ INSULATED PREFINISHED METAL OVERHEAD DOOR. COLOUR TO BE WHITE TO MATCH PRECAST AND INSULATED METAL PANELS.
 - ⑩ RTU (ROOF TOP UNITS), TO BE SCREENED BY HIGH PARAPETS FROM PUBLIC VIEW.
 - ⑪ RAIN WATER RELIEF SCUPPER. 1067mm WIDE.
 - ⑫ RAIN WATER RELIEF SCUPPER. 600mm WIDE.
 - ⑬ LIGHT FIXTURE. SEE ELECTRICAL DRAWINGS FOR MOUNTING HEIGHTS.
 - ⑭ STEEL PIPE BOLLARD FILLED WITH CONCRETE. TYPICAL, ONE BOLLARD EACH SIDE OF DRIVE-IN OVERHEAD DOORS. SEE NOTE MS-25 ON DRAWING SHEET A-0.3.
 - ⑮ STEEL GRATE EXTERIOR STAIR AND PLATFORM FOR FUEL LINE ACCESS.
 - ⑯ STRUCTURAL BRACING. REFER TO STRUCTURAL DRAWINGS.
 - ⑰ PASS-THRU OPENING.



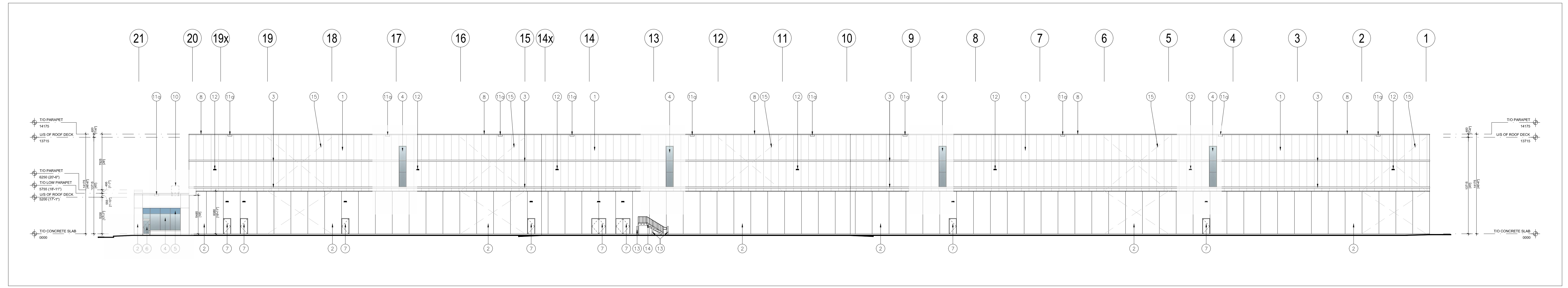
1 North Elevation
A-3.0 1:250



2 South Elevation
A-3.0 1:250



3 East Elevation
A-3.0 1:250



4 West Elevation
A-3.0 1:250

No.	REVISION	DATE
-----	----------	------

BALDASSARRA
Architects Inc.

30 Great Gulf Drive, Unit 20 | Concord ON | L4K 0K7
T. 905.660.0722 | www.baldassarra.ca



OWNERS INFORMATION:

Con Cast Oakville

3300 Superior Court
Oakville, ON

ELEVATIONS

DATE:	DRAWN BY:	CHECKED:	SCALE:
JUL. 2024	HP		AS NOTED
PROJECT No.	DRAWING No.		
K 2441	A-3.0		