

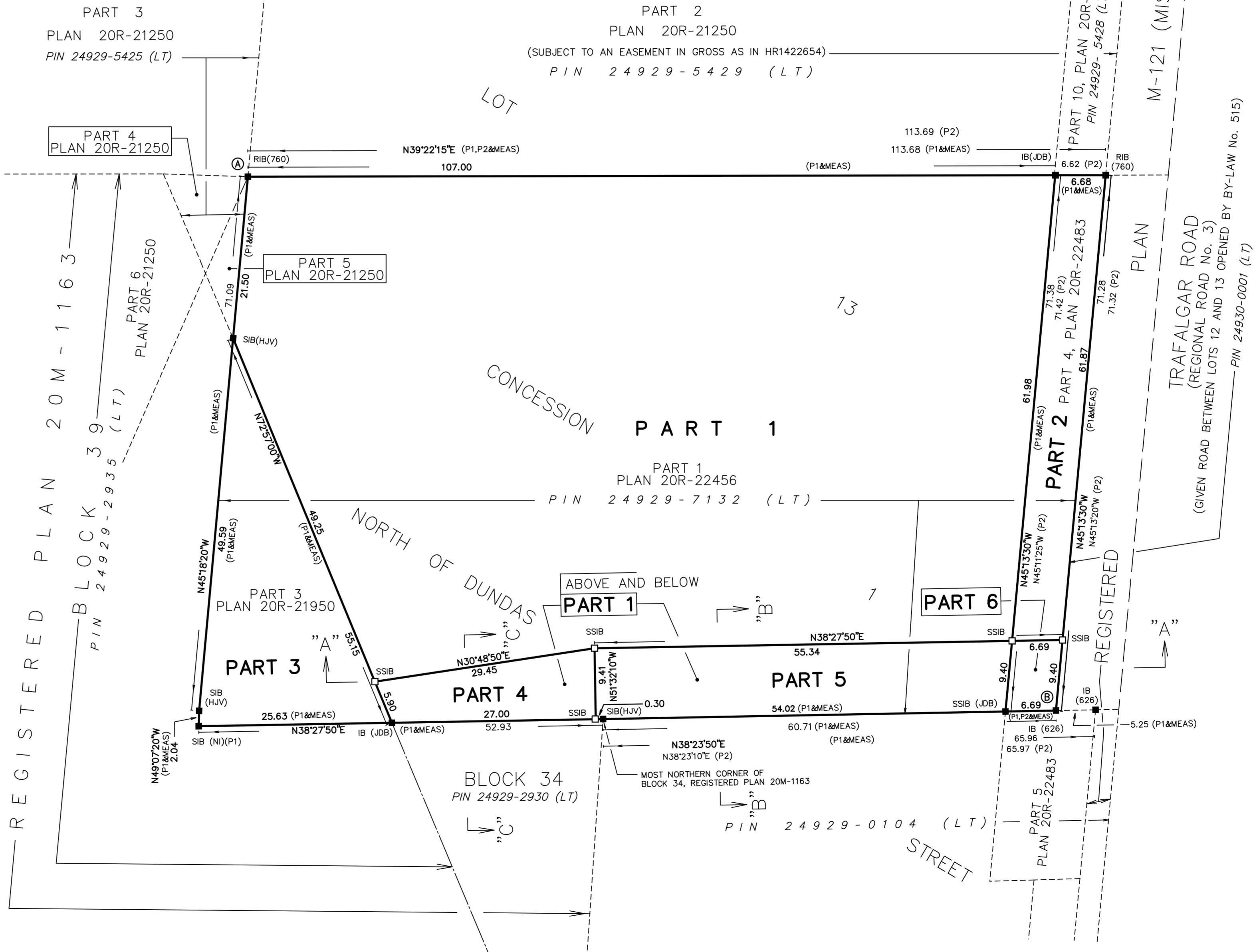
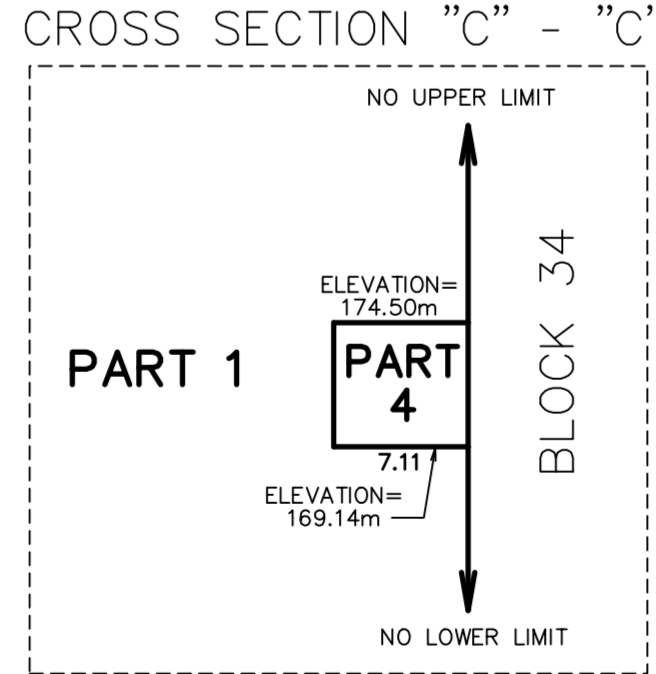
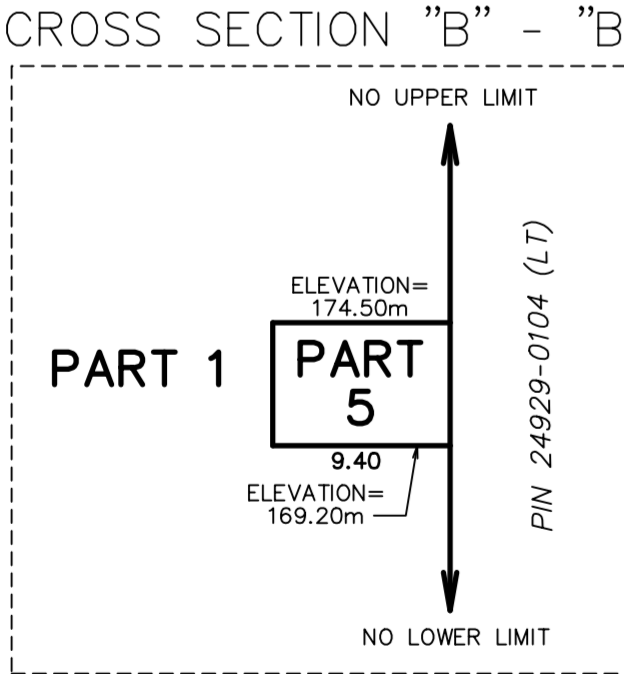
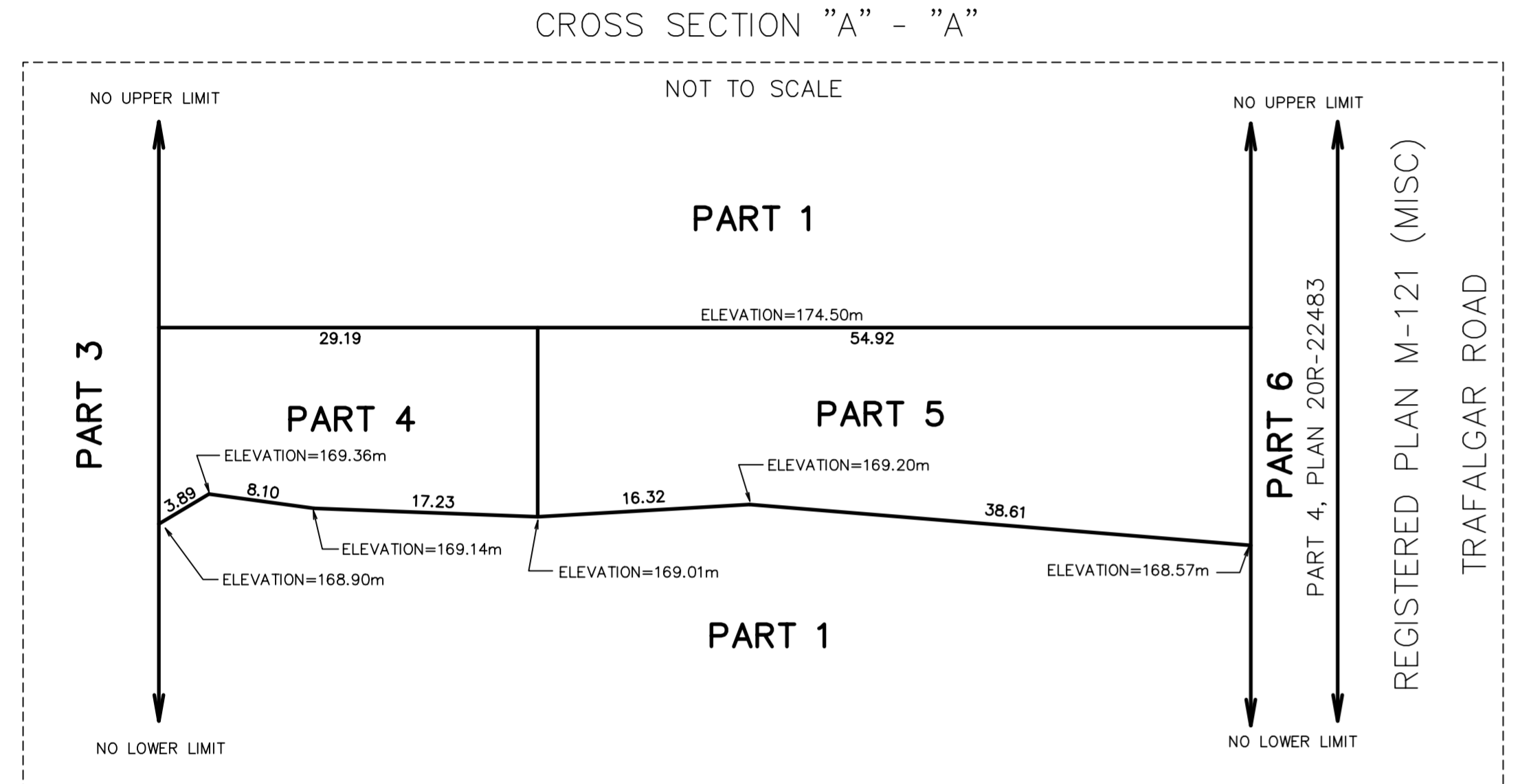
**NOTES**  
 BEARINGS ARE UTM GRID, DERIVED FROM OBSERVED REFERENCE POINTS A AND B, BY REAL TIME NETWORK (RTN) OBSERVATIONS, UTM ZONE 17, NAD83 (CSRS) (2010.0).  
 DISTANCES ARE GROUND AND CAN BE CONVERTED TO GRID BY MULTIPLYING BY THE COMBINED SCALE FACTOR OF 0.999709.  
**INTEGRATION DATA**  
 OBSERVED REFERENCE POINTS (ORPs): UTM ZONE 17, NAD83 (CSRS) (2010.0).  
 COORDINATES TO URBAN ACCURACY PER SECTION 14 (2) OF O.REG 216/10.

POINT ID	EASTING	NORTHING
ORP (A)	603 258.97	4 815 878.60
ORP (B)	603 381.65	4 815 916.27

COORDINATES CANNOT, IN THEMSELVES, BE USED TO RE-ESTABLISH CORNERS OR BOUNDARIES SHOWN ON THIS PLAN.  
 THE RESULTANT TIE BETWEEN ORP (A) AND ORP (B) IS 128.37 N 72°55'40" E

SCHEDULE			
PART	LOT	CONCESSION	PIN
1 TO 6 BOTH INCLUSIVE	PART OF LOT 13	CONCESSION 1 NORTH OF DUNDAS STREET	ALL OF PIN 24929-7132 (LT)

**PLAN 20R-22551**  
 Received and deposited  
 October 20<sup>th</sup>, 2023  
 Allison Turner  
 Representative for the  
 Land Registrar for the  
 Land Titles Division of  
 Halton (No.20)



STRATA PLAN OF SURVEY OF  
**PART OF LOT 13, CONCESSION 1**  
**NORTH OF DUNDAS STREET**  
 GEOGRAPHIC TOWNSHIP OF TRAFALGAR  
 TOWN OF OAKVILLE  
 REGIONAL MUNICIPALITY OF HALTON  
 SCALE 1 : 400  
 THE INTENDED PLOT SIZE OF THIS PLAN IS 915mm IN WIDTH BY 457mm IN HEIGHT WHEN PLOTTED AT A SCALE OF 1:400  
 J.D. BARNES LIMITED

**METRIC** DISTANCES AND COORDINATES SHOWN ON THIS PLAN ARE IN METRES AND CAN BE CONVERTED TO FEET BY DIVIDING BY 0.3048.

**LEGEND**

■	DENOTES	SURVEY MONUMENT FOUND
□	DENOTES	SURVEY MONUMENT SET
SIB	DENOTES	STANDARD IRON BAR
SSIB	DENOTES	SHORT STANDARD IRON BAR
RIB	DENOTES	ROUND IRON BAR
IB	DENOTES	IRON BAR
626	DENOTES	H.D. SCHELL, O.L.S.
760	DENOTES	K.H. MCCONNELL, O.L.S.
950	DENOTES	CUNNINGHAM MCCONNELL LTD.
HJV	DENOTES	HOLDING JONES VANDERVEEN INC.
JDB	DENOTES	J. D. BARNES LTD.
NI	DENOTES	NOT IDENTIFIABLE
P1	DENOTES	PLAN 20R-22456
P2	DENOTES	PLAN 20R-22483
MEAS	DENOTES	MEASURED

N=NORTH / S=SOUTH / E=EAST / W=WEST

SET SSIB MONUMENT WAS USED DUE TO LACK OF OVERBURDEN AND/OR PROXIMITY OF UNDERGROUND UTILITIES IN ACCORDANCE WITH SECTION 11 (4) OF O.REG. 525/91.

**ELEVATION NOTE**  
 ELEVATIONS SHOWN ON THIS PLAN ARE DERIVED FROM TOWN OF OAKVILLE BENCHMARK NUMBER 276 ON TOP OF NORTH END OF CONCRETE CULVERT 1.6 KM EAST OF BURNHAMTHORPE AND TRAFALGAR ROAD.  
 ELEVATION = 175.722 m

**SURVEYOR'S CERTIFICATE**  
 I CERTIFY THAT:  
 1. THIS SURVEY AND PLAN ARE CORRECT AND IN ACCORDANCE WITH THE SURVEYS ACT, THE SURVEYORS ACT AND THE LAND TITLES ACT AND THE REGULATIONS MADE UNDER THEM.  
 2. THE SURVEY WAS COMPLETED ON OCTOBER 5, 2023.

OCTOBER 5, 2023  
 DATE  
 R.S. QUERUBIN  
 ONTARIO LAND SURVEYOR

THIS PLAN OF SURVEY RELATES TO AOLS PLAN SUBMISSION FORM NUMBER 2207060

**J.D. BARNES** SURVEYING  
 LIMITED MAPPING  
 GIS  
 LAND INFORMATION SPECIALISTS  
 401 WHEELABRATOR WAY, SUITE A, MILTON, ON L9T 3C1  
 T: (905) 875-9955 F: (905) 875-9956 www.jdbarnes.com

DRAWN BY:	CHECKED BY:	REFERENCE NO.:
CE/DS	RSQ	17-30-168-02-B
FILE: G:\17-30-168\02\Drawing\17-30-168-02-B.dgn	DATED:	OCTOBER 5, 2023
	PLOTTED:	OCTOBER 5, 2023