

**STRATA PLAN OF SURVEY OF
BLOCK 146
PLAN 20M-1229 AND
BLOCK 20
PLAN 20M-1269
TOWN OF OAKVILLE
REGIONAL MUNICIPALITY OF HALTON**

SCALE 1:300
R-PE SURVEYING LTD., O.L.S.
THE INTENDED PLOT SIZE OF THIS PLAN IS 890 mm IN WIDTH BY 1183 mm IN HEIGHT WHEN PLOTTED AT A SCALE OF 1:300.
METRIC
DISTANCES AND COORDINATES SHOWN ON THIS PLAN ARE IN METRES AND CAN BE CONVERTED TO FEET BY DIVIDING BY 0.3048.

PLAN CONFIGURATION OF PARTS 1 TO 19, INCLUSIVE, AND 21 TO 24, INCLUSIVE, AT ELEVATION = XXX.XX metres

- NOTES AND LEGEND**
- DENOTES MONUMENT FOUND
 - DENOTES MONUMENT SET
 - SSB DENOTES SHORT STANDARD IRON BAR
 - SP DENOTES PLASTIC BAR
 - IB DENOTES IRON BAR
 - CD DENOTES CEMENT CONCRETE
 - PLN DENOTES PROPERTY IDENTIFIER NUMBER
 - PL1 DENOTES PLAN 20M-1269
 - PL2 DENOTES PLAN 20M-1229
 - PL3 DENOTES PLAN 20M-2209
 - PL4 DENOTES PLAN 20M-2278
 - PL5 DENOTES PLAN 20M-2291
 - MEAS DENOTES MEASUREMENT
 - SD DENOTES SIGHTED CONTROL POINT
 - LL DENOTES NO LOWER LIMIT AND NO UPPER LIMIT
 - VD DENOTES THE VERTICAL PLANE ESTABLISHED BY MEASUREMENT
 - HP DENOTES THE HORIZONTAL PLANE ESTABLISHED BY ELEVATION
 - SP DENOTES THE PLANE ESTABLISHED BY THE UPPER SURFACE OF THE CONCRETE SLAB
- ALL FOUND MONUMENTS ARE BY R-PE SURVEYING LTD., O.L.S. UNLESS NOTED OTHERWISE.
ALL VERTICAL PLANS ARE ESTABLISHED BY MEASUREMENT UNLESS NOTED OTHERWISE.

INTEGRATION NOTE
COORDINATES ARE UTM ZONE 17, NAD83 (ORIGINAL), TO URBAN ACCURACY PER SEC 14 (2) OF OREG. 20/70 AND CANONIC IN THEMSELVES, BE USED TO RE-ESTABLISH CORNERS ON BOUNDARIES SHOWN ON THIS PLAN.
BEARINGS ARE GRID, UTM ZONE 17, NAD83 (ORIGINAL), DERIVED FROM: SDP 1071990202 NORTH 481907.008 EAST 80261.222 SDP 0011633660 NORTH 481945.739 EAST 800361.085
DISTANCES ARE GROUND AND CAN BE CONVERTED TO GRID BY MULTIPLYING BY THE COMBINED SCALE FACTOR OF 0.999707.

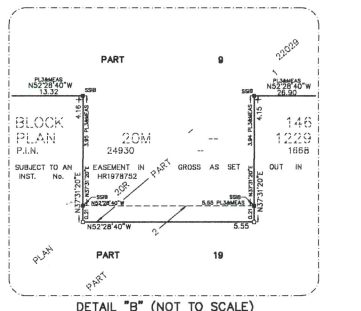
BENCHMARK NOTE
ELEVATIONS ARE GEODETIC AND ARE REFERRED TO MINISTRY OF TRANSPORTATION VERTICAL BENCHMARK NUMBER 0001981811 HAVING AN ORTHOMETRIC ELEVATION OF 175.722 METRES. ELEVATIONS ARE REFERENCED TO THE CANADIAN GEODETIC VERTICAL DATUM OF 1928, 1978 ADJUSTMENT (CGVD-1928/1978).
BRASS TABLE SET ON CONCRETE CULVERT UNDER BURNHAMTHORPE RD. 0.8 KM EAST OF THE JUNCTION OF BURNHAMTHORPE ROAD AND TRAFALGAR ROAD IN OAKVILLE 1.4 KM WEST OF THE JUNCTION OF BURNHAMTHORPE ROAD AND NORTH LINE ROAD, AND 0.6 METRES NORTH OF CENTRELINE OF BURNHAMTHORPE ROAD. TABLE IS SET VERTICALLY IN THE NORTH END OF CULVERT, 1.20 METRES SOUTH OF NORTH END OF CULVERT AND 73 CM EAST OF WEST FACE OF CULVERT.

SURVEYOR'S CERTIFICATE
I CERTIFY THAT:
1. THE STRUCTURES SHOWN ON THIS PLAN COMPRISING SHEETS 1, 2 AND 3 ARE IN EXISTENCE.
2. THE DIMENSIONS SHOWN ON THIS PLAN HAVE BEEN VERIFIED BY ACTUAL MEASUREMENTS.
DATE: _____, 2024.
A. U. KUMARAMAYAKE
ONTARIO LAND SURVEYOR

SURVEYOR'S CERTIFICATE
I CERTIFY THAT:
1. THIS SURVEY AND PLAN COMPRISING SHEETS 1, 2 AND 3 ARE CORRECT AND IN ACCORDANCE WITH THE SURVEYS ACT, THE SURVEYORS ACT AND THE LAND TITLES ACT AND THE REGULATIONS MADE UNDER THEM.
2. THE SURVEY WAS COMPLETED ON THE _____ DAY OF _____, 2024.
DATE: _____, 2024.
A. U. KUMARAMAYAKE
ONTARIO LAND SURVEYOR
THIS PLAN OF SURVEY RELATES TO ADSL PLAN SUBMISSION FORM NUMBER _____

SCHEDULE OF PART LOCATION

PART	SHEETS	CROSS SECTION
1	183	"NS2"- "NS2"
2	183	"NS2"- "NS2"
3	183	"NS2"- "NS2"
4	183	"NS1"- "NS1", "EW2"- "EW2", "EW1"- "EW1", "EW2"- "EW2"
5	1,283	"NS1"- "NS1", "NS2"- "NS2", "EW1"- "EW1", "EW2"- "EW2"
6	1,283	"NS2"- "NS2", "EW1"- "EW1"
7	1,283	"NS2"- "NS2"
8	1,283	"NS1"- "NS1", "NS2"- "NS2", "EW1"- "EW1", "EW2"- "EW2"
9	182	"EW1"- "EW1", "EW2"- "EW2", "EW1"- "EW1", "EW2"- "EW2"
10	182	"NS2"- "NS2", "EW1"- "EW1", "EW2"- "EW2", "EW1"- "EW1", "EW2"- "EW2"
11	182	"EW1"- "EW1", "EW2"- "EW2", "EW1"- "EW1", "EW2"- "EW2"
12	182	"NS2"- "NS2", "EW1"- "EW1", "EW2"- "EW2", "EW1"- "EW1", "EW2"- "EW2"
13	183	"EW1"- "EW1"
14	182	"EW1"- "EW1"
15	183	"NS2"- "NS2"
16	182	"NS2"- "NS2"
17	183	"EW1"- "EW1"
18	182	"EW1"- "EW1"
19	1,283	"NS2"- "NS2", "EW1"- "EW1"
20	283	"EW1"- "EW1"
21	1,283	"NS2"- "NS2"
22	182	
23	1	
24	183	"NS2"- "NS2"



STRATA PLAN OF SURVEY OF
 BLOCK 146
 PLAN 20M-1229 AND
 BLOCK 20
 PLAN 20M-1269
 TOWN OF OAKVILLE
 REGIONAL MUNICIPALITY OF HALTON

PLAN CONFIGURATION OF PARTS 5 TO 12, INCLUSIVE, 14, 16, 18 TO 22, INCLUSIVE, AT ELEVATION = XXX.XX metres

SCALE 1:300

R-PE SURVEYING LTD., O.L.S.
 THE INTENDED PLOT SIZE OF THIS PLAN IS 890 mm IN WIDTH BY 1183 mm IN HEIGHT WHEN PLOTTED AT A SCALE OF 1:300.

METRIC

DISTANCES AND COORDINATES SHOWN ON THIS PLAN ARE IN METRES AND CAN BE CONVERTED TO FEET BY DIVIDING BY 0.3048.

NOTES AND LEGEND

P.L.N. DENOTES PROPERTY IDENTIFIER NUMBER

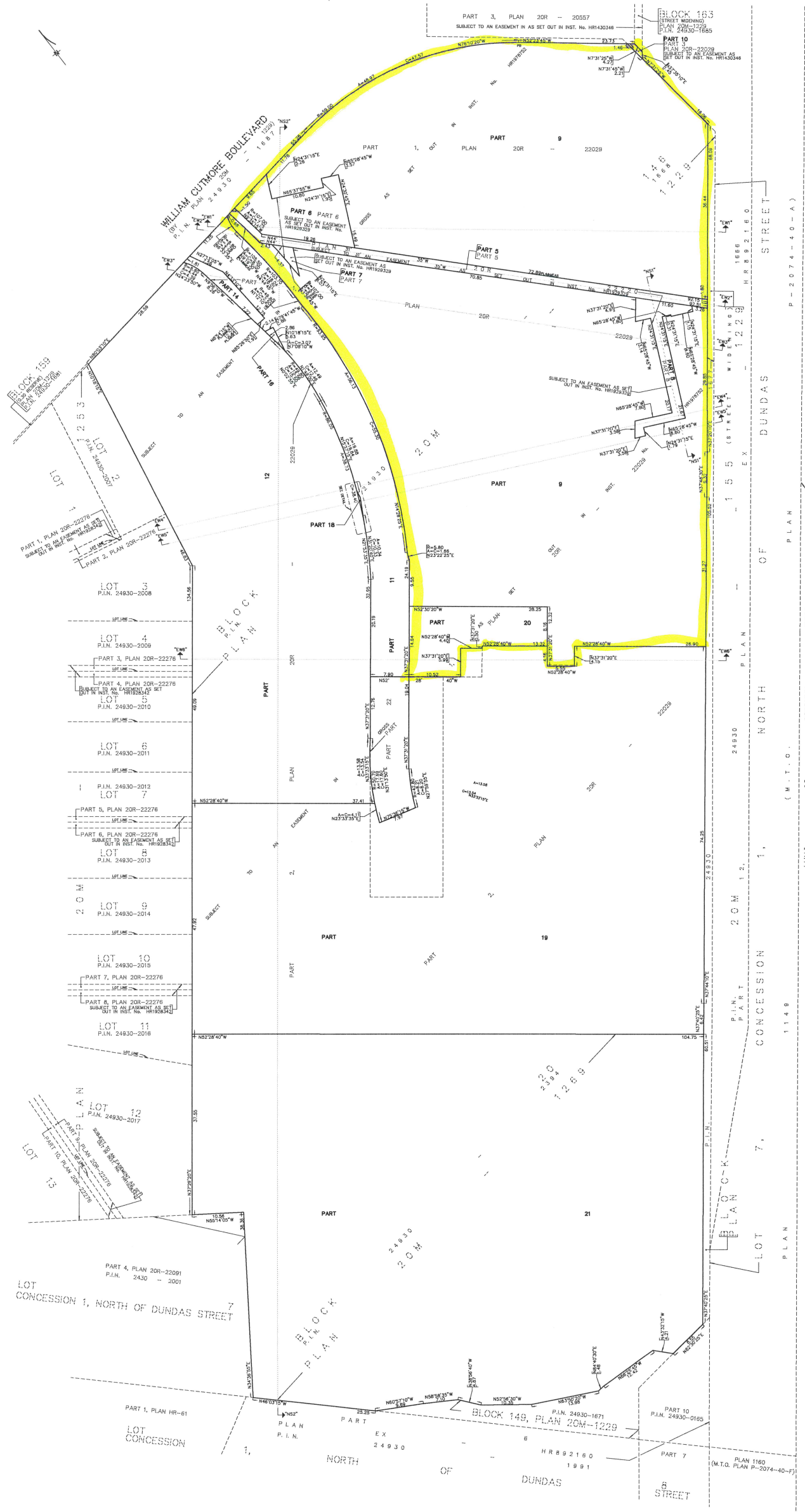
± DENOTES NO LOWER LIMIT AND NO UPPER LIMIT

± DENOTES THE VERTICAL PLANE ESTABLISHED BY MEASUREMENT

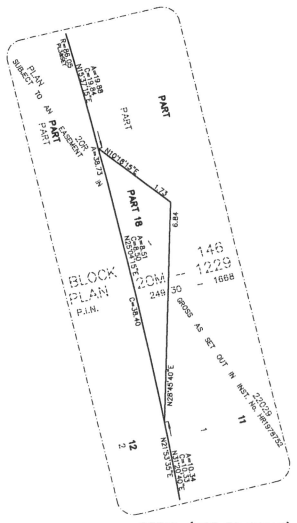
± DENOTES THE HORIZONTAL PLANE ESTABLISHED BY ELEVATION

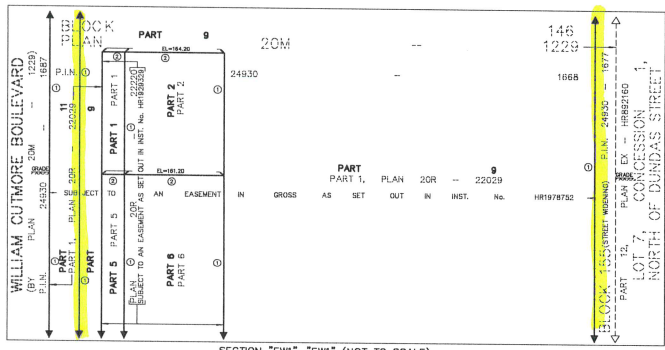
± DENOTES THE PLANE ESTABLISHED BY THE UPPER SURFACE OF THE CONCRETE SLAB

ALL VERTICAL PLANES ARE ESTABLISHED BY MEASUREMENT UNLESS NOTED OTHERWISE.

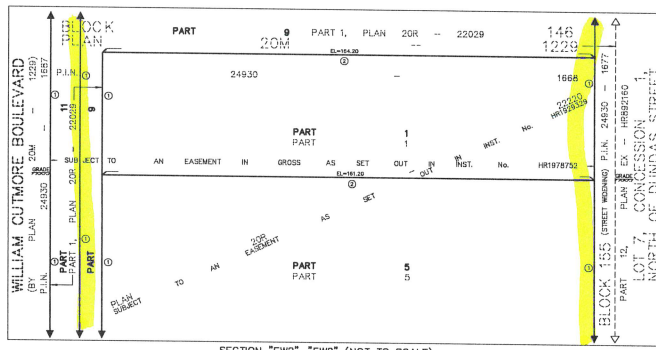


DUNDAS STREET (REGIONAL ROAD No. 5)
 REGIONAL ROAD BY PLAN 24930-0165 (M.T.O. PLAN P-2074-173A)
 (ROAD ALLOWANCE BETWEEN CONCESSION 1, NORTH OF DUNDAS STREET AND CONCESSION 1, SOUTH OF DUNDAS STREET)
 (PART 1, M.T.O. PLAN P-2074-173A)

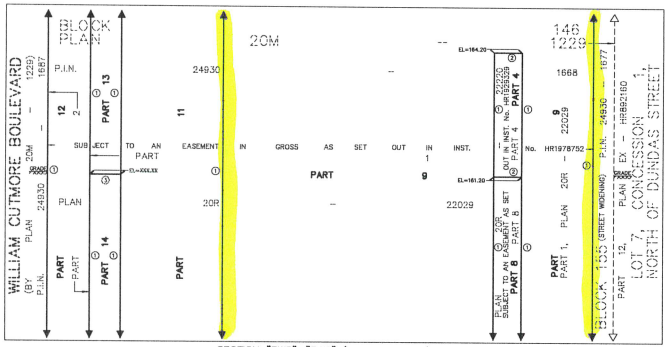




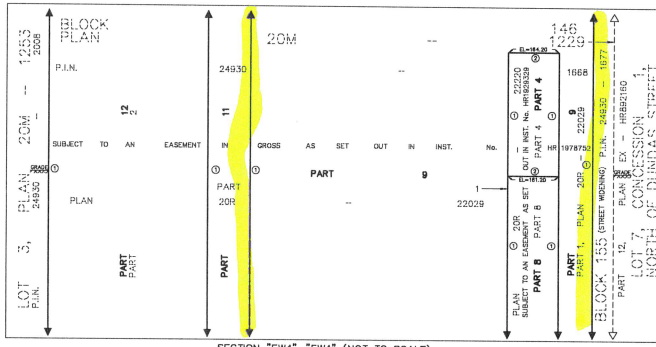
SECTION "EW1"-"EW1" (NOT TO SCALE)



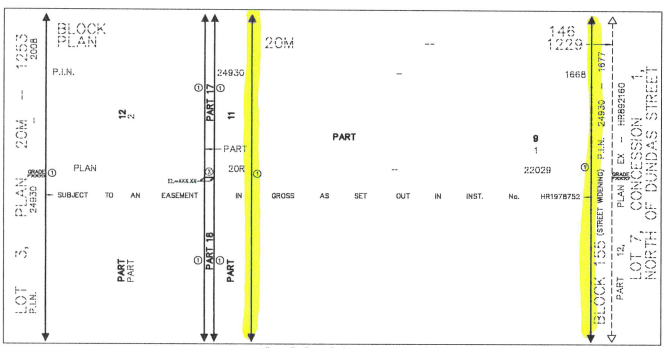
SECTION "EW2"-"EW2" (NOT TO SCALE)



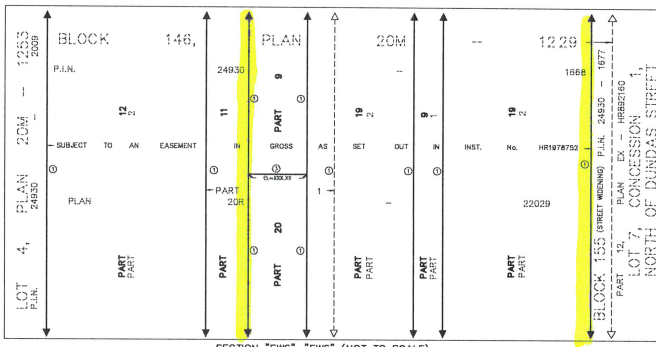
SECTION "EW3"-"EW3" (NOT TO SCALE)



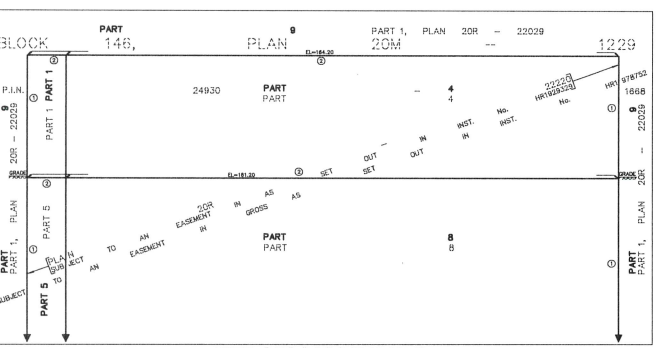
SECTION "EW4"-"EW4" (NOT TO SCALE)



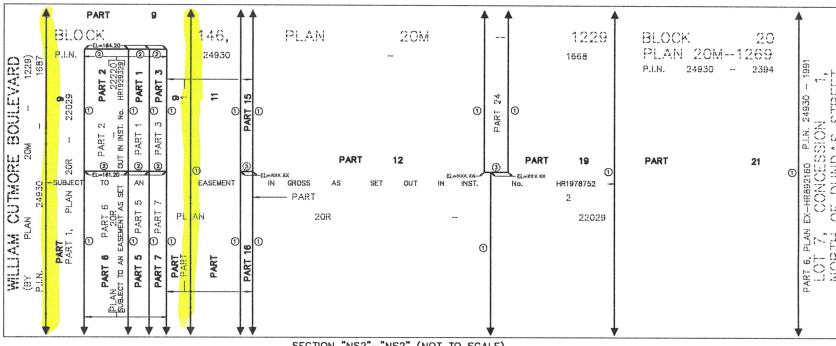
SECTION "EW5"-"EW5" (NOT TO SCALE)



SECTION "EW6"-"EW6" (NOT TO SCALE)



SECTION "NS1"-"NS1" (NOT TO SCALE)



SECTION "NS2"-"NS2" (NOT TO SCALE)

STRATA PLAN OF SURVEY OF
BLOCK 146
PLAN 20M-1229 AND
BLOCK 20
PLAN 20M-1269
TOWN OF OAKVILLE
REGIONAL MUNICIPALITY OF HALTON

SCALE AS SHOWN

NOTES

- P.I.N. DENOTES PROPERTY IDENTIFIER NUMBER
- E. DENOTES ELEVATION
- ± DENOTES NO LOWER LIMIT AND NO UPPER LIMIT
- ± DENOTES THE VERTICAL PLANE ESTABLISHED BY MEASUREMENT
- ± DENOTES THE HORIZONTAL PLANE ESTABLISHED BY ELEVATION
- ± DENOTES THE PLANE ESTABLISHED BY THE UPPER SURFACE OF THE CONCRETE SLAB
- ALL VERTICAL PLANS ARE ESTABLISHED BY MEASUREMENT UNLESS NOTED OTHERWISE.

BENCHMARK NOTE

ELEVATIONS ARE GEODETIC AND ARE REFERRED TO MINISTRY OF TRANSPORTATION VERTICAL BENCHMARK NUMBER "CGR88181" HAVING AN ORTHOMETRIC ELEVATION OF 175.722 METRES. ELEVATIONS ARE REFERENCED TO THE CANADIAN GEODETIC VERTICAL DATUM OF 1928. 1978 ADJUSTMENT (CGD00-1928.1978).
BRASS TABLET SET ON CONCRETE CULVERT UNDER BURHAMTHORPE RD. 1.6 KM EAST OF THE JUNCTION OF BURHAMTHORPE RD AND BRAMALAN RD IN OAKVILLE, 1.4 KM WEST OF THE JUNCTION OF BURHAMTHORPE RD AND BURHAMTHORPE RD. AS AN APPROXIMATE NORTH OF CURVE POINT OF BURHAMTHORPE RD. TABLET IS SET VERTICALLY IN THE NORTH END OF CULVERT 125 METRES SOUTH OF NORTH END OF CULVERT AND 0.73 METRES EAST OF WEST FACE OF CULVERT.