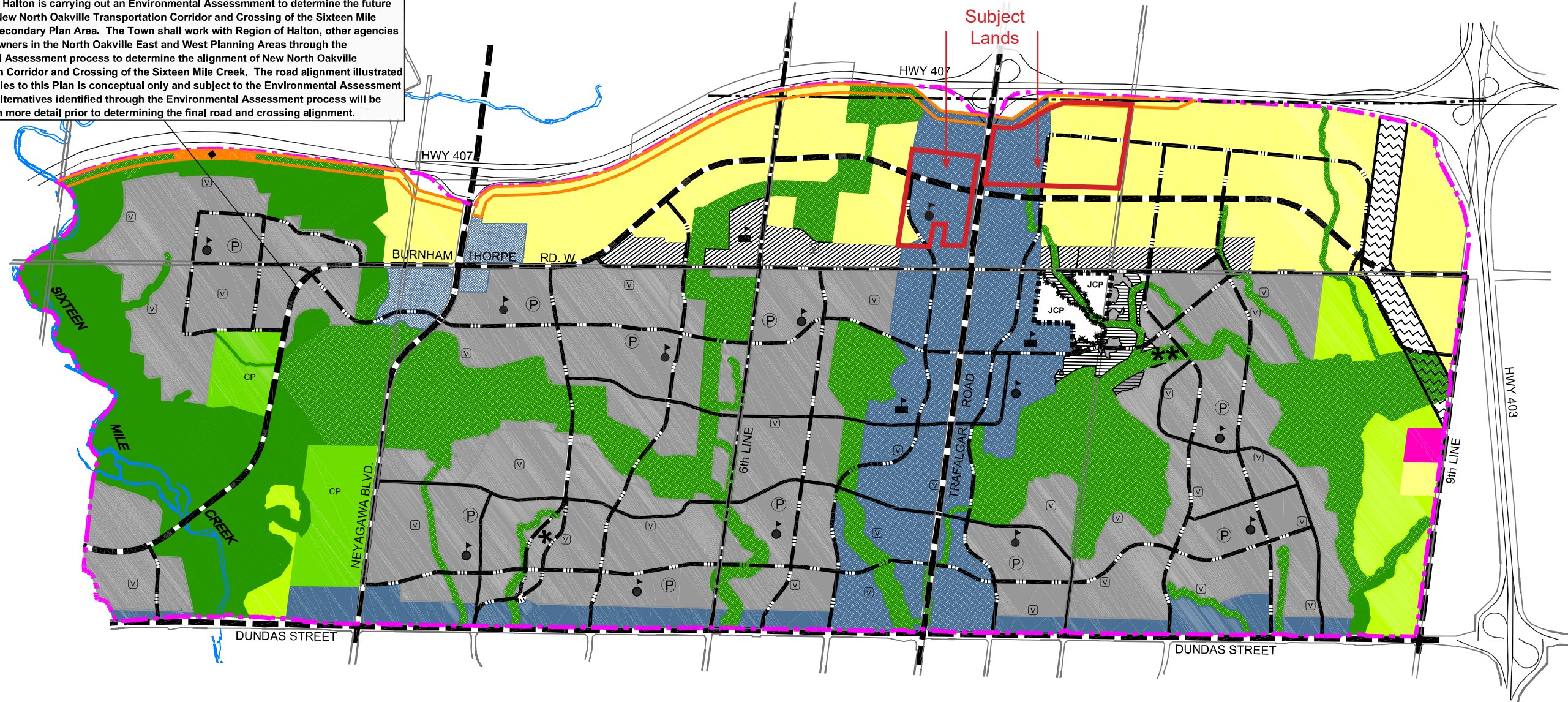


New North Oakville Transportation Corridor and Crossing of the Sixteen Mile Creek
 The Region of Halton is carrying out an Environmental Assessment to determine the future alignment of New North Oakville Transportation Corridor and Crossing of the Sixteen Mile Creek in the Secondary Plan Area. The Town shall work with Region of Halton, other agencies and the landowners in the North Oakville East and West Planning Areas through the Environmental Assessment process to determine the alignment of New North Oakville Transportation Corridor and Crossing of the Sixteen Mile Creek. The road alignment illustrated on the schedules to this Plan is conceptual only and subject to the Environmental Assessment process. All alternatives identified through the Environmental Assessment process will be investigated in more detail prior to determining the final road and crossing alignment.



NOTE: This Plan must be read in conjunction with NOE 1, NOE 3 & NOE 4

LEGEND

- | | | |
|--|--|--|
| <ul style="list-style-type: none"> --- SECONDARY PLAN AREA BOUNDARY --- OAKVILLE / MILTON MUNICIPAL BOUNDARY — PROVINCIAL FREEWAY — MAJOR ARTERIAL/TRANSIT CORRIDOR — MINOR ARTERIAL/TRANSIT CORRIDOR — AVENUE/TRANSIT CORRIDOR — CONNECTOR/TRANSIT CORRIDOR UTILITY CORRIDOR TRANSITWAY UNDERLYING LAND USE NOT DETERMINED subject to Section 7.4.7.1(b)(i) | <ul style="list-style-type: none"> DUNDAS URBAN CORE AREA NEYAGAWA URBAN CORE AREA TRAFALGAR URBAN CORE AREA TRANSITIONAL AREA EMPLOYMENT DISTRICT NATURAL HERITAGE SYSTEM AREA COMMUNITY PARK AREA JOSHUA CREEK COMMUNITY PARK AREA JOSHUA CREEK FLOODPLAIN AREA subject to Sections 7.4.13.1 & 7.6.17 | <ul style="list-style-type: none"> NEIGHBOURHOOD AREA CEMETERY AREA INSTITUTIONAL AREA SECONDARY SCHOOL SITE ELEMENTARY SCHOOL SITE NEIGHBOURHOOD PARK VILLAGE SQUARE SUBJECT TO SECTIONS 7.4.7.3c viii & 7.4.14.3 d) POLICY REFERENCE SEE POLICY SECTION 7.4.7.2 |
|--|--|--|

Town of Oakville
 North Oakville East of Sixteen Mile Creek Secondary Plan

FIGURE NOE 2
Land Use Plan

March 2023

