

PROJECT

**The Residences at Bronte Lakeside**  
85 Bronte Road  
Oakville, ON L6L 3B7

NO.	DATE	DESCRIPTION
1	2022/09/19	ISSUED FOR BUILDING PERMIT



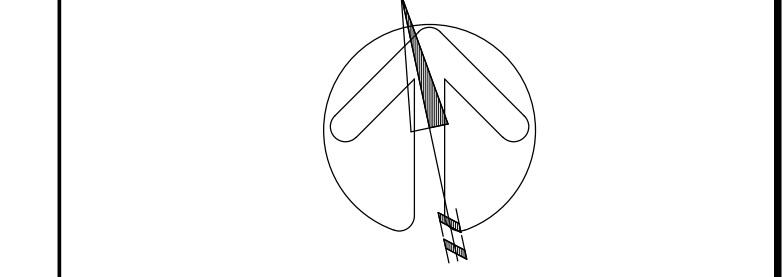
**1 SITE PLAN**  
A-0003 / Scale: 1:200

NO.	DATE	DESCRIPTION

DRAWING STATUS: \_\_\_\_\_  
 STATUS APPROVAL: \_\_\_\_\_  
 DATE: \_\_\_\_\_

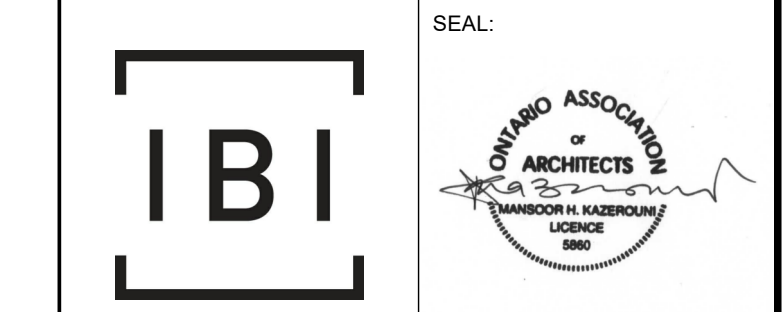
IBI GROUP ARCHITECTS (CANADA) LTD.  
 is a member of the IBI Group of companies.

CLIENT  
**Bronte Lakeside Limited**  
 3190 Harvester Road,  
 Suite 201A  
 Burlington, ON L7N 3T1



SHEET TITLE  
**SITE PLAN PHASE I**

DRAWN BY:	CHECKED BY:	DATE:	SCALE:
Author	Checker	04/11/22	1:200



IBI GROUP ARCHITECTS (CANADA) INC.  
 7th Floor - 15 St. Clair Avenue West  
 Toronto, Ontario M5V 2Y7, Canada  
 Tel: (416) 593-1500 Fax: (416) 593-0444  
 ibigroup.com

PROJECT NO: 125341 DWG NO: A-0003