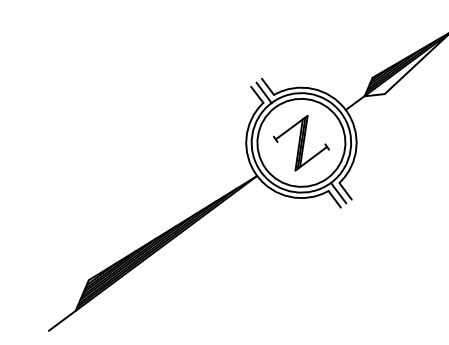
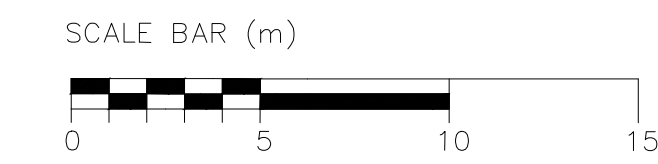


Migratory Birds Regulations, 2022

- This property is in nesting zone C2, with a nesting period of early April to late August
- During the nesting period, there is increased likelihood of nest occupancy
- Nests occupied by a live bird or viable egg are not to be disturbed
- In most cases, removing an unoccupied nest outside the nesting period is permitted
- The nests of 18 species listed in Schedule 1 of MBRs 2022 receive year-round protection, unless determined to be abandoned



TREE PRESERVATION PLAN

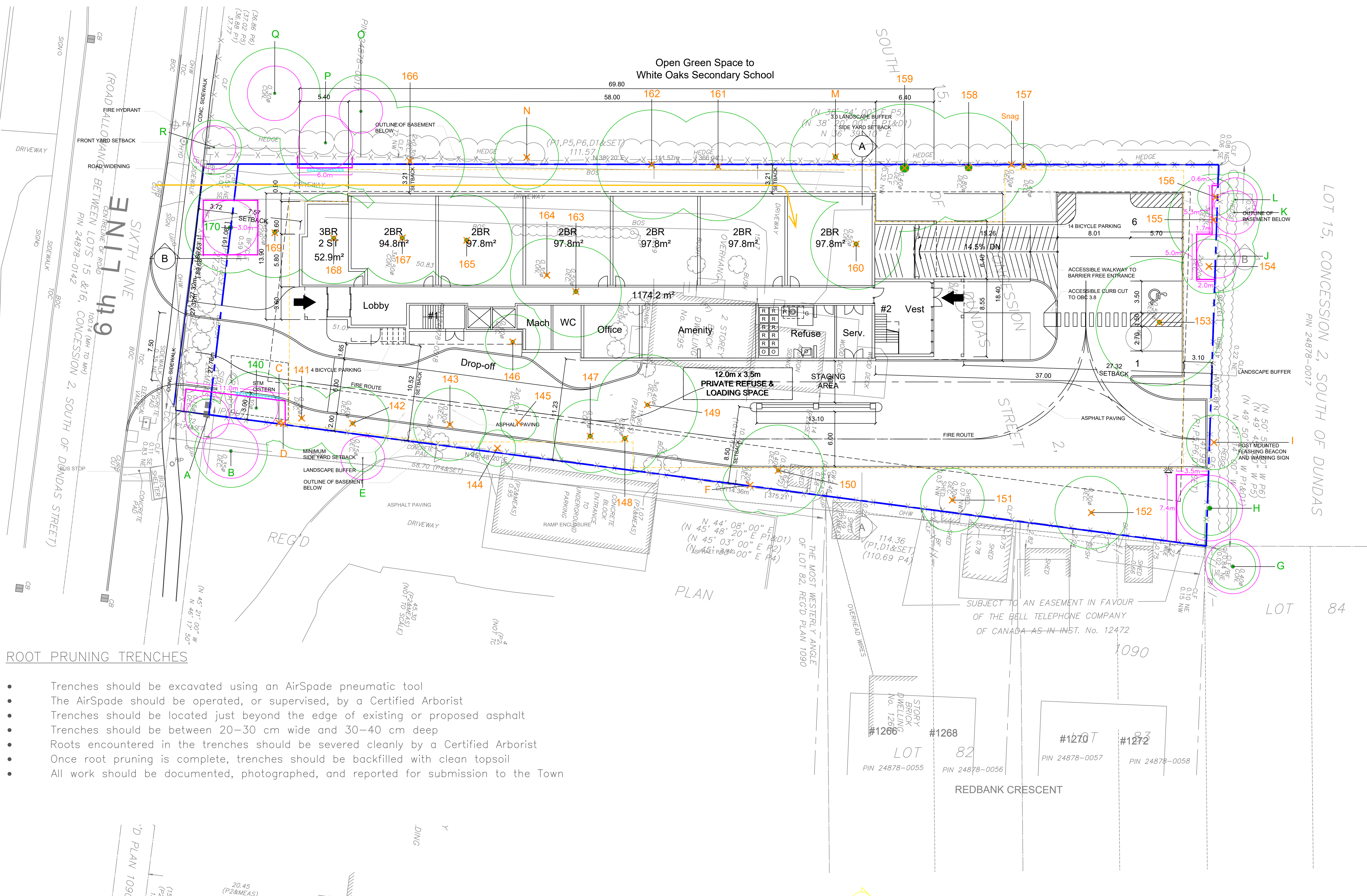
1295 Sixth Line
Oakville, Ontario
L6H 1X1

Notes

- All base information has been supplied by the client.
- Of the 49 trees on this Plan, 35 are recommended for removal and 14 can be preserved.
- Refer to the Arborist Report prepared for the subject site, dated December 12, 2024 for specific instructions regarding tree protection requirements.

LEGEND

- GREEN LABEL TREE TO BE PRESERVED
- ORANGE LABEL TREE TO BE REMOVED
- X SYMBOL OF TREE TO BE REMOVED
- TREE DRIPLINE
- TREE PROTECTION ZONE
- TREE PROTECTION FENCING
- - - LIMIT OF EXCAVATION
- SITE ACCESS ROUTE
- PROPERTY BOUNDARY
- ▨ AIRSPACE TRENCH



ROOT PRUNING TRENCHES

- Trenches should be excavated using an AirSpade pneumatic tool
- The AirSpade should be operated, or supervised, by a Certified Arborist
- Trenches should be located just beyond the edge of existing or proposed asphalt
- Trenches should be between 20–30 cm wide and 30–40 cm deep
- Roots encountered in the trenches should be severed cleanly by a Certified Arborist
- Once root pruning is complete, trenches should be backfilled with clean topsoil
- All work should be documented, photographed, and reported for submission to the Town

MAPLE HILL TREE SERVICES
1220 HERITAGE ROAD
BURLINGTON
ONTARIO
L7L 4X9



P: 905-824-2100
W: www.maplehilltree.com
E: kyle@maplehilltree.com

Drawing By: Kyle Buckley
ISA Certified Arborist ON-2744A

Date: 12 December 2024

Scale: 1:200

TREE INVENTORY

Tree ID	Common Name	Botanical Name	DBH (cm)	Dripline Radius (m)	Health	Structure	TPZ Radius (m)	Owner	Comments	Action
140	Norway Maple	<i>Acer platanoides</i>	27	4	G	F	2.4	Subject Site	Pruning wounds (L), Crook (L), Stem wound (M), Competing limb (L), Surface roots (L)	Preserve
141	Norway Maple	<i>Acer platanoides</i>	26	3.5	G	F	2.4	Subject Site	Pruning wounds (L), Codominant, V-shaped union @ ~2.0 m, Included bark, Surface roots (L)	Remove
142	Norway Maple	<i>Acer platanoides</i>	34	4	G	F	3.0	Subject Site	Sweep (L), Pruning wounds (L), U-shaped union @ ~2.5 m, Surface roots (L)	Remove
143	Red Maple	<i>Acer rubrum</i>	31	4	F	F	3.0	Subject Site	Codominant, U-shaped union @ ~1.5, Pruning wounds (M), Epicormic branches (M), Tip dieback (L)	Remove
144	Norway Maple	<i>Acer platanoides</i>	20	2	G	F	2.4	Subject Site	Pruned to clear hydro lines (M)	Remove
145	Eastern White Cedar	<i>Thuja occidentalis</i>	16, 16	2	G	G	2.4	Subject Site	Calculated DBH = 23 cm, Multi-stemmed @ ground with two stems cut off at 1.0 m, Pruning wounds (L)	Remove
146	Pear	<i>Pyrus spp.</i>	42	3	P	P	3.0	Subject Site	Massive stem wound, Hollow trunk, Decay (H), Cavity (H), Dead branches (H)	Remove
147	Norway Spruce	<i>Picea abies</i>	44	4	G	G	3.0	Subject Site	Surface roots (L), Pruning wounds (L)	Remove
148	Norway Spruce	<i>Picea abies</i>	59	4	G	G	3.0	Subject Site	Surface roots (L), Pruning wounds (L)	Remove
149	White Mulberry	<i>Morus alba</i>	43, 43, 48	5.5	F	P	4.8	Subject Site	Calculated DBH = 77 cm, Three stems @ ground, Decaying stump @ base, Poor wound encapsulation, Pruning wounds (M), Dead branches (M)	Remove
150	Manitoba Maple	<i>Acer negundo</i>	61	5	P	F	4.2	Subject Site	Poor wound encapsulation, Dead wood (H), Epicormic branches (H), Pruning wounds (H), Over extended limbs (H), Burls	Remove
151	Manitoba Maple	<i>Acer negundo</i>	35	3.5	F	P	3.0	Subject Site	Poor form (H), Epicormic branches (H), Pruning wounds (H), Fair vigor, Some sealed wounds and some open wounds	Remove
152	Manitoba Maple	<i>Acer negundo</i>	44	4	F	P	3.0	Subject Site	Lean (H), Trunk wound (L), Broken branches (L)	Remove
153	Black Walnut	<i>Juglans nigra</i>	55	7	G	G	3.6	Subject Site	Water well very near tree, Pruning wounds (L), U-shaped union @ ~4.0 m	Remove
154	Siberian Elm	<i>Ulmus pumila</i>	19, 30	3	P	P	3.0	Subject Site	Calculated DBH = 36 cm, Codominant, V-shaped union @ ground, Included bark, Dead wood (H)	Remove
155	Siberian Elm	<i>Ulmus pumila</i>	28	5	F	P	2.4	Subject Site	V-shaped union @ ~5.0 m, Dead branches (H), Cavity @ base (M), Broken branches (M)	Remove
156	Siberian Elm	<i>Ulmus pumila</i>	21	2	F	P	2.4	Subject Site	Old stem cut off @ ~70 cm - now decaying and hollow, Dead branches (M)	Remove
157	Siberian Elm	<i>Ulmus pumila</i>	38, ~21	2.5	G	F	3.0	Shared (White Oaks S.S.)	Calculated DBH = 43 cm, V-shaped union @ ground, Growing through chain link fence, Pruning wounds (L), Broken branches (L), Good encapsulation	Remove
158	Manitoba Maple	<i>Acer negundo</i>	27, 55	6	F	P	4.2	Subject Site	Calculated DBH = 61 cm, Dead ash tree fused through center of tree, Poor form (H), Dead branches (H), Pruning wounds (H), Basal cavity (M)	Remove
159	Manitoba Maple	<i>Acer negundo</i>	55	7	F	F	3.6	Subject Site	Decaying stub @ ~1.5 m (H), Dead branches (M), Broken branches (M)	Remove
160	Norway Spruce	<i>Picea abies</i>	54	5	G	G	3.6	Subject Site	Broken branches (L)	Remove
161	Bur Oak	<i>Quercus macrocarpa</i>	38	6	F	F	3.0	Subject Site	V-shaped unions in canopy (L), Pruning wounds (L), Dead branches (M)	Remove
162	Manitoba Maple	<i>Acer negundo</i>	51	6	P	P	3.6	Subject Site	Tip dieback on 30% of crown, Dead branches (M), Pruning wounds (H), Trunk wound (H)	Remove
163	Pear	<i>Pyrus spp.</i>	32, 36	5	P	P	3.0	Subject Site	Calculated DBH = 48 cm, Splitting union @ ~60 cm, Decay (H), Dead branches (H), Dying tree could fail anytime	Remove
164	Blue Spruce	<i>Picea pungens</i>	36	4	P	F	3.0	Subject Site	Pruning wounds (H), Canopy raised to ~8.0 m, Dieback 40%	Remove
165	Norway Spruce	<i>Picea abies</i>	58	5	G	G	3.6	Subject Site	Surface roots (L), Pruning wounds (L)	Remove
166	Manitoba Maple	<i>Acer negundo</i>	28, ~52	6	F	P	3.6	Subject Site	Calculated DBH = 59 cm, V-shaped union @ ~30 cm, Included bark, Pruning wounds (H), Dead branches (H), Fence inclusion (H)	Remove
167	Norway Spruce	<i>Picea abies</i>	49	5	G	G	3.0	Subject Site	Pruning wounds (L), Surface roots (L)	Remove
168	Norway Spruce	<i>Picea abies</i>	31, 54	5	G	F	4.2	Subject Site	Calculated DBH = 62 cm, V-shaped union @ ~30 cm, Included bark, Competing stem, Pruning wounds (M), Surface roots (L)	Remove
169	Norway Spruce	<i>Picea abies</i>	47	5	G	G	3.0	Subject Site	Pruning wounds (M), Root damage (L) on exposed roots	Remove
170	Norway Spruce	<i>Picea abies</i>	47	5	G	F	3.0	Subject Site	Pruning wounds (L), Codominant, V-shaped union @ ~1.5 m, Included bark	Preserve
A	Norway Maple	<i>Acer platanoides</i>	~18	2	F	F	2.4	Neighbour (1265 Sixth L)	Pruning wounds (H), Pruned to stay beneath primary hydro lines	Preserve
B	Honey Locust	<i>Gleditsia tricanthos var. inermis</i>	~35	4	G	F	3.0	Neighbour (1265 Sixth L)	Poor form (M), Pruning wounds (M), Pruned to clear primary hydro lines	Preserve
C	Norway Maple	<i>Acer platanoides</i>	~15	2	F	F	2.4	Shared (1265 Sixth L)	Base growing through chain link fence, Pruning wounds (M), Sweep (M)	Remove
D	Norway Maple	<i>Acer platanoides</i>	~16	2	F	F	2.4	Shared (1265 Sixth L)	Base growing through chain link fence, Pruning wounds (M), Sweep (M)	Remove
E	Pear	<i>Pyrus spp.</i>	~15	1.5	P	P	2.4	Neighbour (1265 Sixth L)	Epicormic branches (H), Pruning wounds (H), Dead branches (M)	Preserve
F	Manitoba Maple	<i>Acer negundo</i>	~16, 16	3	F	P	2.4	Shared (1265 Sixth L)	Calculated DBH = 23 cm, Growing through chain link fence, Lean (M), Two stems fused together, Pruning wounds (M)	Remove
G	Blue Spruce	<i>Picea pungens</i>	~38	2.5	F	F	3.0	Neighbour (1274 Redbank Cr)	Pruning wounds (H), Dead stubs (M), Pruned to clear hydro wires	Preserve
H	Manitoba Maple	<i>Acer negundo</i>	~20, 25, 30, 30	3	F	P	3.6	Shared (White Oaks S.S.)	Calculated DBH = 53 cm, Poor form (H), Multi-stemmed @ ground, Dead branches (L)	Preserve
I	Manitoba Maple	<i>Acer negundo</i>	~20	3	F	F	2.4	Neighbour (White Oaks S.S.)	Poor form (H), Sweep (M)	Remove
J	Siberian Elm	<i>Ulmus pumila</i>	~14, 20	4	F	F	2.4	Neighbour (White Oaks S.S.)	Calculated DBH = 24 cm, V-shaped union @ ~30 cm, Included bark, Dead branches (M)	Preserve
K	Siberian Elm	<i>Ulmus pumila</i>	~16, 20	3	F	F	2.4	Neighbour (White Oaks S.S.)	Calculated DBH = 26 cm, Bowed away from subject property, Codominant @ ground, Dead branches (L)	Preserve
L	Siberian Elm	<i>Ulmus pumila</i>	~15, 15	3	F	F	2.4	Neighbour (White Oaks S.S.)	Calculated DBH = 21 cm, Codominant @ ground, Dead branches (H)	Preserve
M	Cherry	<i>Prunus spp.</i>	~52	5	G	G	3.6	Neighbour (White Oaks S.S.)	Pruning wounds (L)	Remove
N	White Mulberry	<i>Morus alba</i>	~11, 20, 24	3.5	F	P	3.0	Neighbour (White Oaks S.S.)	Calculated DBH = 33 cm, Multi-stemmed @ ground, Included bark, Poor form (M)	Remove
O	Kentucky Coffeetree	<i>Gymnocladus dioica</i>	~28	4	G	G	2.4	Neighbour (White Oaks S.S.)	Defect-free	Preserve
P	Kentucky Coffeetree	<i>Gymnocladus dioica</i>	~31	5	G	G	3.0	Neighbour (White Oaks S.S.)	Pruning wounds (L), Dead branches (L)	Preserve
Q	Kentucky Coffeetree	<i>Gymnocladus dioica</i>	~34	5	F	F	3.0	Neighbour (White Oaks S.S.)	Dead branches (M), Dense canopy (M)	Preserve
R	Manitoba Maple	<i>Acer negundo</i>	~19, 21	3	F	P	2.4	Neighbour (White Oaks S.S.)	Calculated DBH = 28 cm, Sprouts from old stump, Lean (M), Dead branches (L)	Preserve

TREE PRESERVATION PLAN

1295 Sixth Line
Oakville, Ontario
L6H 1X1

TREE INVENTORY

EXAMPLE TPZ SIGN

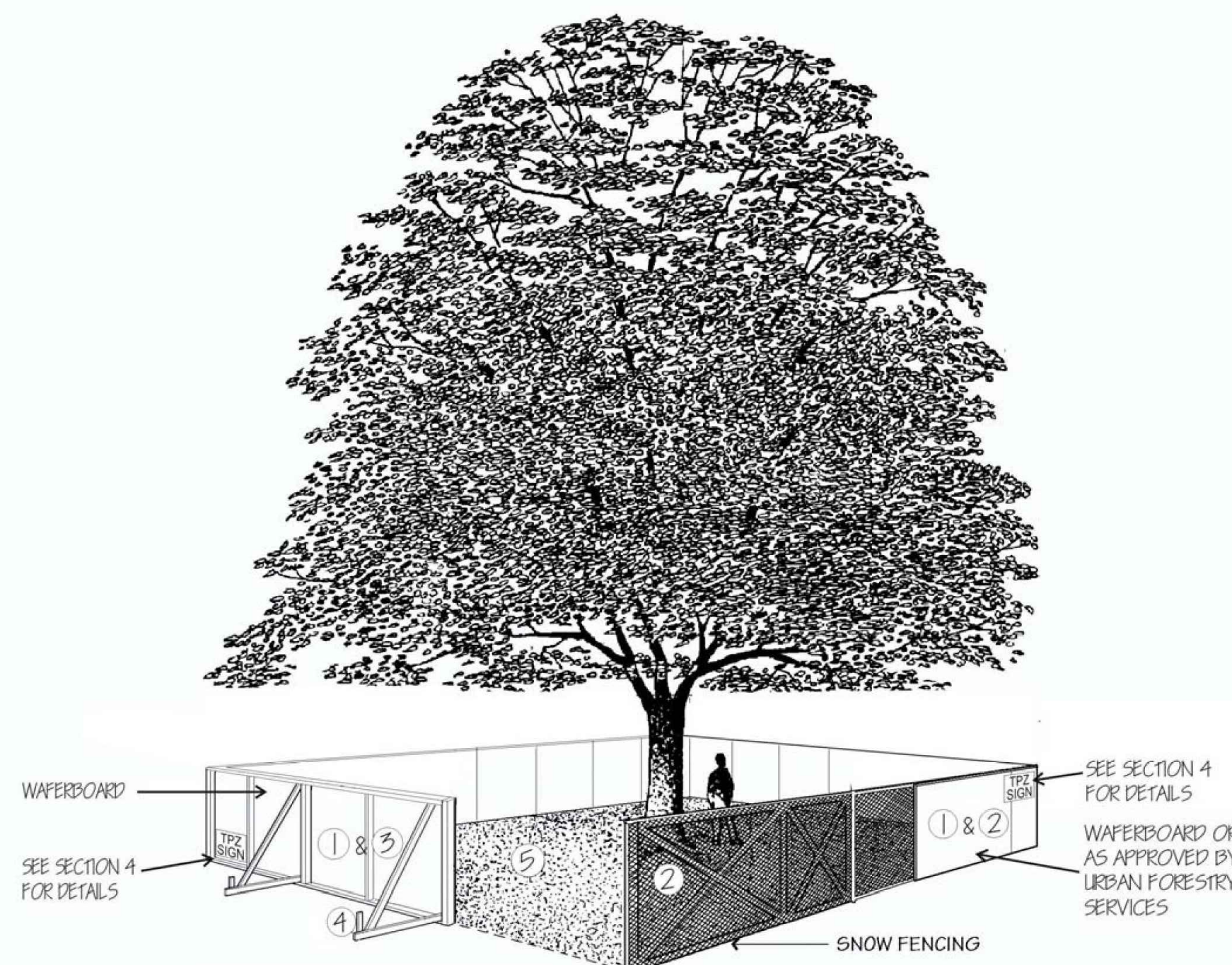
SCHEDULE 1

Tree Protection Zone

- No grade change, storage or temporary storage of any materials or equipment, washing of equipment, nor the dumping of any debris is permitted within this area.
- The tree protection barrier must not be altered, moved or removed in any way without the written authorization of

Maple Hill Tree Services
905-824-2100

SCHEDULE 1
TREE PROTECTION BARRIER



Tree Protection Barriers

- Tree protection barriers must be 1.2m (4ft) high, waferboard hoarding or an equivalent approved by Urban Forestry Services.
- Tree protection barriers for trees situated on the Town road allowance where visibility must be maintained can be 1.2m (4ft.) high and consist of plastic web snow fencing on a wood frame made of 2"x 4"s.
- Where some excavate or fill has to be temporarily located near a tree protection barrier, plywood must be used to ensure no material enters the Tree Protection Zone.
- All supports and bracing should be outside the Tree Protection Zone. All such supports should minimize damaging roots outside the Tree Protection Barrier.
- No construction activity, grade changes, surface treatment or excavations of any kind is permitted within the Tree Protection Zone.

MAPLE HILL
TREE SERVICES

1220 HERITAGE ROAD
BURLINGTON
ONTARIO
L7L 4X9

P: 905-824-2100
W: www.maplehilltree.com
E: kyle@maplehilltree.com



Drawing By: Kyle Buckley
ISA Certified Arborist ON-2744A

Date: 12 December 2024

Scale: N/A