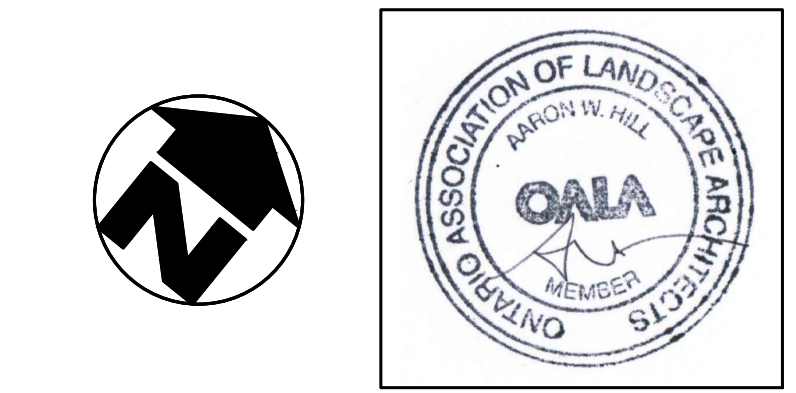


**GENERAL NOTES**

- ALL WORKMANSHIP WILL BE TO THE STANDARDS OF LANDSCAPE ONTARIO.
- ALL PLANT MATERIAL TO BE NO.1 GRADE NURSERY GROWN IN ACCORDANCE WITH THE CANADIAN STANDARDS FOR NURSERY STOCK, 5TH EDITION, 2017, BY THE CANADIAN NURSERY TRADES ASSOCIATION.
- BACKFILL WILL CONSIST OF SOIL NATIVE TO THE SITE OR GENERAL SOIL TYPE/CLASS NATIVE TO THE SITE. TOPSOIL TO BE TESTED FOR NUTRIENT VALUE, AND AMENDED FOR OPTIMAL GROWTH AS PER THE RECOMMENDATIONS OF THE SOIL TEST.
- CONTRACTOR SHALL MAINTAIN ALL LANDSCAPE AREAS UNTIL OWNER'S ACCEPTANCE OF PROJECT.
- CONTRACTOR TO LOCATE ALL UNDERGROUND UTILITIES.
- PLANTING MAY BE ADJUSTED TO SUIT LOCATIONS OF SITE UTILITY STRUCTURES/SERVICES.
- ALL MATERIALS MUST BE APPROVED BY LANDSCAPE ARCHITECT PRIOR TO INSTALLATION.
- SPREAD MULCH TO A MINIMUM OF 100mm COMPACTED DEPTH ON ALL TREE PITS AND PLANTING BEDS.
- CHECK AND VERIFY ALL DIMENSIONS AND QUANTITIES PRIOR TO COMMENCEMENT OF WORK. ANY DISCREPANCIES ARE TO BE REPORTED IN WRITING TO THE LANDSCAPE ARCHITECT. QUANTITIES NOTED WITHIN THE PLAN SUPERCEDE THOSE IN THE PLANT LIST. ANY SUBSTITUTIONS SHALL BE APPROVED BY THE LANDSCAPE ARCHITECT.
- SOD AS MARKED WITH NURSERY SOD ON A MINIMUM OF 100mm OF CLEAN TOPSOIL. FINE GRADE AND SOD ALL BOULEVARD AREAS TO MUNICIPAL SPECIFICATIONS AND REPAIR DAMAGE TO ADJACENT PROPERTIES, AS REQUIRED.
- FINAL INSPECTION AND ACCEPTANCE OF PLANTING WORK SHALL COINCIDE WITH THE FINAL INSPECTION AND ACCEPTANCE OF ALL WORK INCLUDED IN THE CONTRACT.
- ALL SEEDED SLOPES 3:1 AND GREATER TO RECEIVE EROSION CONTROL MATTING. PIN SOD ON ALL SLOPES OF 3:1 OR GREATER.
- SUBMIT A WRITTEN GUARANTEE TO THE EFFECT THAT ALL PLANTS ACCEPTED DURING THE PERIOD OF JANUARY 1st TO JULY 15th SHALL BE GUARANTEED UNTIL JULY 15th THE FOLLOWING YEAR. PLANTS ACCEPTED DURING THE PERIOD OF JULY 15th TO DECEMBER 31st SHALL BE GUARANTEED FOR ONE YEAR FROM THE DATE OF ACCEPTANCE. THE GUARANTEE PERIODS LISTED ABOVE SHALL APPLY TO ALL "NURSERY GROWN" PLANTS.
- AT THE TIME OF FINAL INSPECTION ALL PLANTS SHALL BE IN A HEALTHY, VIGOROUS GROWING CONDITION, PLANTED IN FULL ACCORDANCE WITH DRAWINGS AND CONDITIONS.
- SITE PLAN INFORMATION AS PER Salter Pilon Architecture.
- ENGINEERING AS PER WSP, AND IS PROVIDED FOR INFORMATION ONLY.
- SITE LIGHTING BY OTHERS



REVISIONS

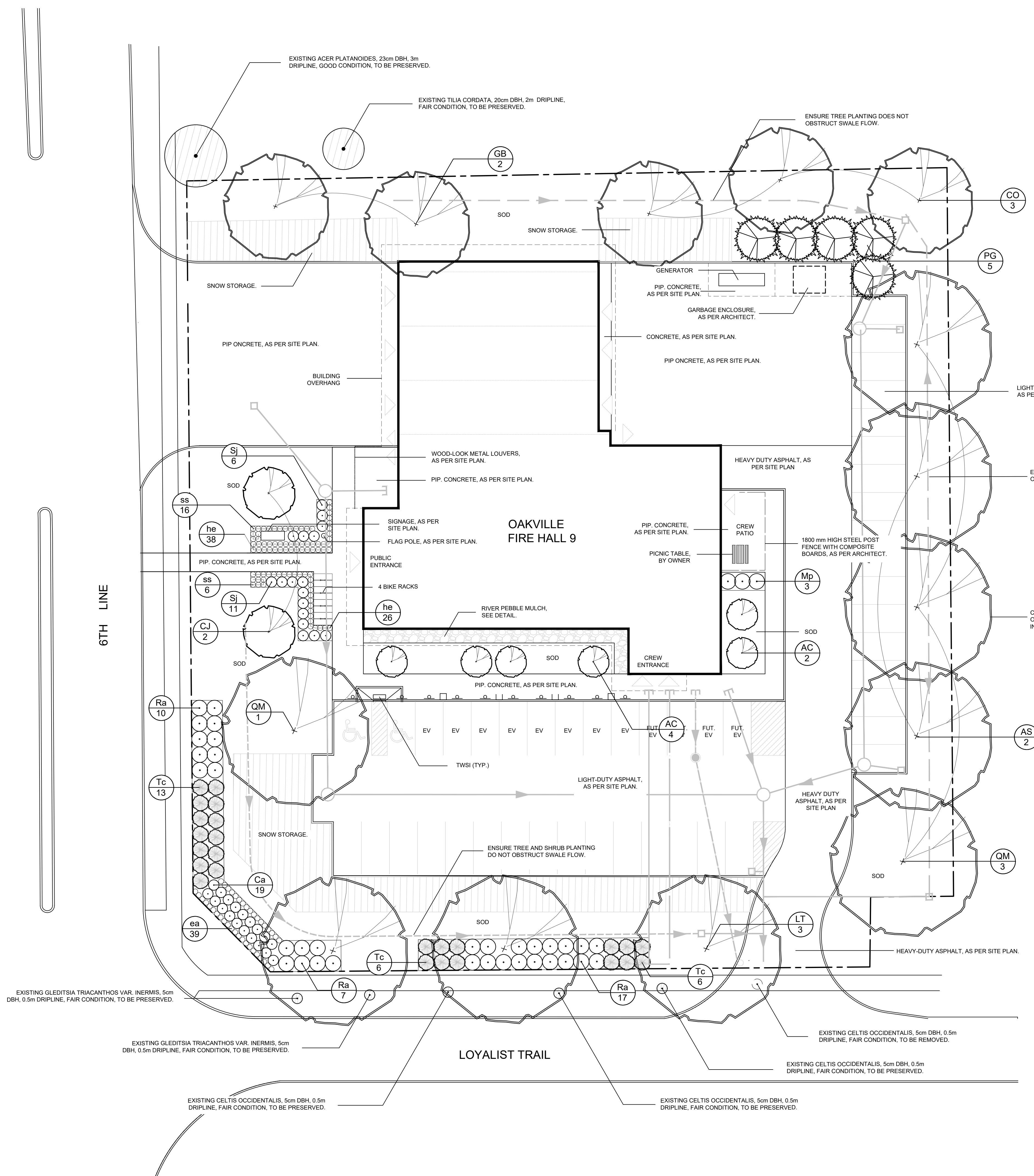
no.	date	description	by
1.	Jul.18.24	Issued for Approval	EH

Salter Pilon Architecture  
4182 Sixth Line  
Oakville

Landscape Plan



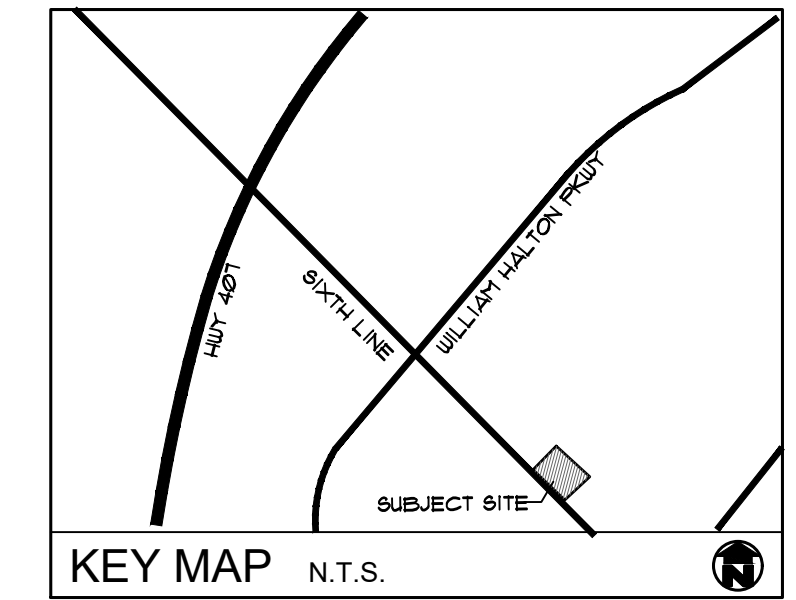
PROJECT NO.: 2023-97 DRAWN BY: JC  
SCALE: 1:200 DESIGNED BY: JC  
SHEET: L1 APPROVED BY: AWH  
PLOT DATE: 07/18/2024



**Plant List**

KEY	QUANT	BOTANICAL NAME	COMMON NAME	SIZE	COND.
AS	2	Acer saccharum	Sugar Maple	60 mm	W.B.
AC	6	Amelanchier canadensis (Tree form)	Serviceberry	50 mm	W.B.
CO	3	Celtis occidentalis	Hackberry	60 mm	W.B.
CJ	2	Cercidiphyllum japonicum	Katsura Tree	60 mm	W.B.
GB	2	Ginkgo biloba	Maidenhair Tree	60 mm	W.B.
LT	3	Liriodendron tulipifera	Tulip Tree	60 mm	W.B.
PG	5	Picea glauca 'Densata'	Black Hills White Spruce	175 cm	W.B.
QM	4	Quercus macrocarpa	Burr Oak	60 mm	W.B.
Ca	19	Ceanothus americanus	New Jersey Tea	3 gal.	Pot
Mp	3	Myrica pensylvanica	Bayberry	3 gal.	Pot
Ra	34	Rhus aromatica	Fragrant Sumac	3 gal.	Pot
Sj	17	Spiraea japonica 'Goldflame'	Goldflame Spiraea	3 gal.	Pot
Tc	25	Taxus cuspidata 'Nana Aurea'	Dwarf Golden Japanese Yew	3 gal.	Pot
ea	39	Echinacea angustifolia	Narrow-leaf Coneflower	1 gal.	Pot
he	64	Hemerocallis 'Stella D'Oro'	Stella D'Oro Daylily	1 gal.	Pot
ss	22	Schizachyrium scoparium	Little Blue Stem	1 gal.	Pot

F:\AUTO\_OP\Drawings\xxxx\xxxx.dwg



GENERAL NOTES

REVISIONS

no.	date	description	by
1.	Jul. 18.24	Issued for Approval	EH

Salter Pilon Architecture  
4182 Sixth Line  
Oakville

DETAILS



PROJECT NO: 2023-97 DRAWN BY: JC  
SCALE: DESIGNED BY: JC  
SHEET: APPROVED BY: AWH  
L2 PLOT DATE: 07/18/2024



MBR-0500-00003  
Legacy #MBR500-S

**Sustainability Facts**

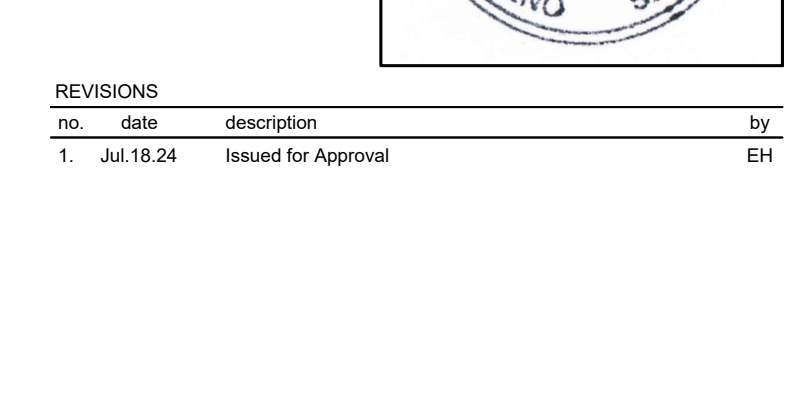
Unit Size	One (1) MBR-0500-00003 Bike Rack
Carbon footprint (GWP)	103 kg CO2-Eq
Total energy use (TPE)	1720 MJ-Eq
Water use (WUP)	0.843 m3 water
Material recyclability	100%

LEED v4.1 Credits

Type III Environmental Product Declaration	<input checked="" type="checkbox"/>
Material Inventory	<input checked="" type="checkbox"/>
Low VOC Products	<input checked="" type="checkbox"/>
Free of Red List substances	<input checked="" type="checkbox"/>

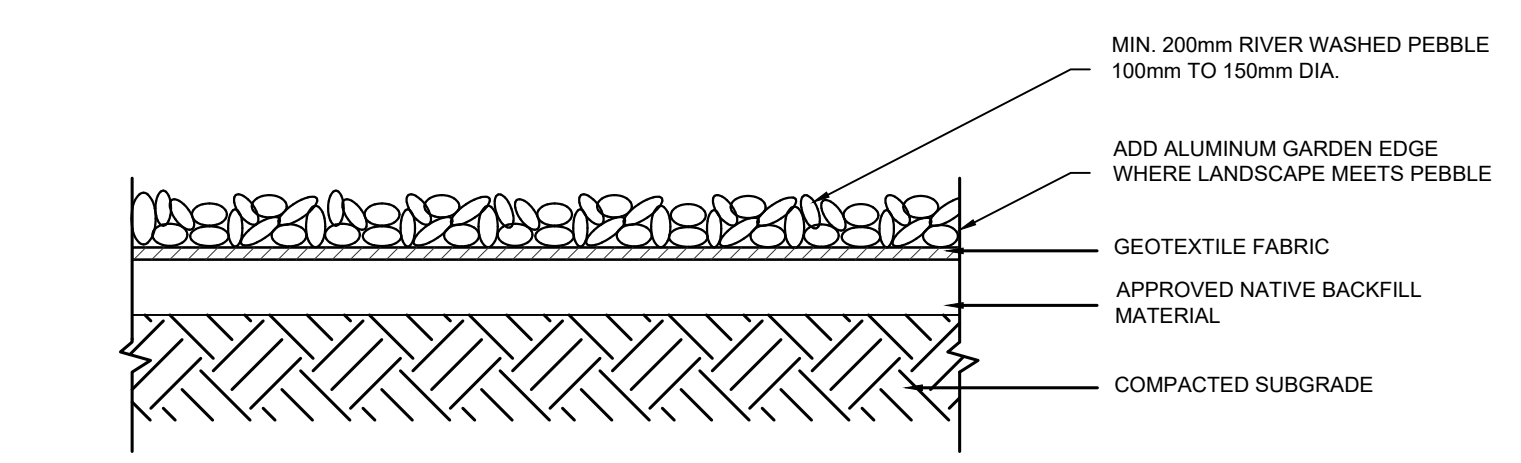
DESCRIPTION: 500 Series - 500 Bike Rack; H.S. Steel Tube, Surface Mount, 2 Bike Configuration  
 FINISH: All steel components are protected with E-Coat rust proofing. The Maglin Powdercoat System provides a durable finish on all metal surfaces.  
 INSTALLATION: The bike rack is delivered pre-assembled. It is available with either a surface mount or direct burial installation option.  
 TO SPECIFY: Select MBR-0500-00003  
 Choose: Powdercoat Color

HEIGHT: 35" (88.9cm) LENGTH: 19.25" (48.9cm) WEIGHT: 13.27 lbs (6.0kg)

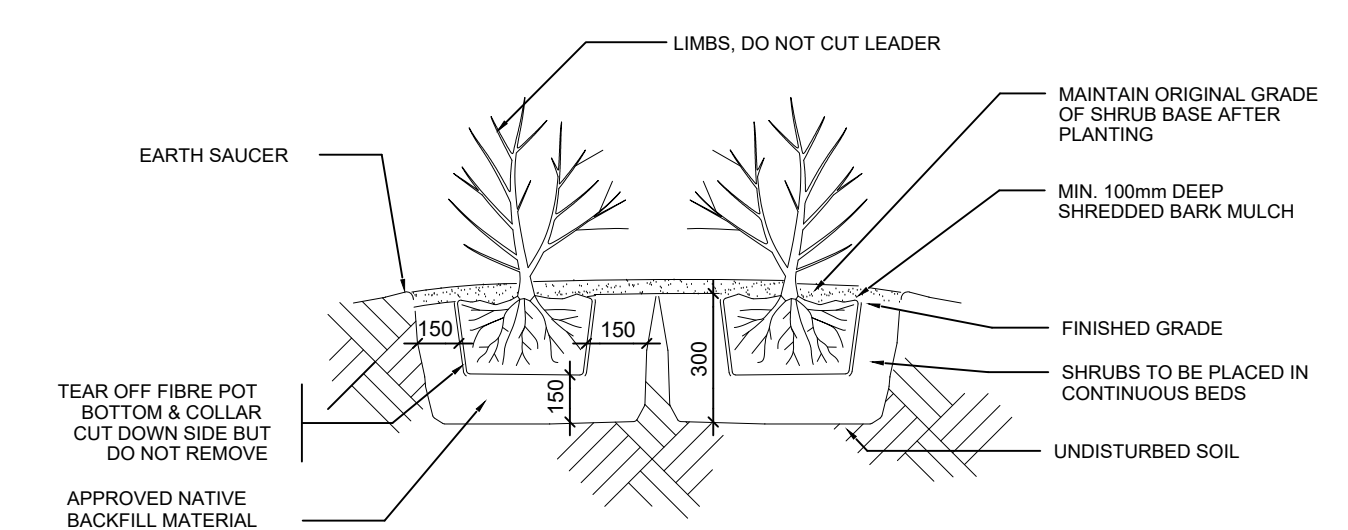


MAGLIN Site Furniture  
 7660 7th Street  
 P.O. Box 203  
 www.maglin.com  
 info@maglin.com

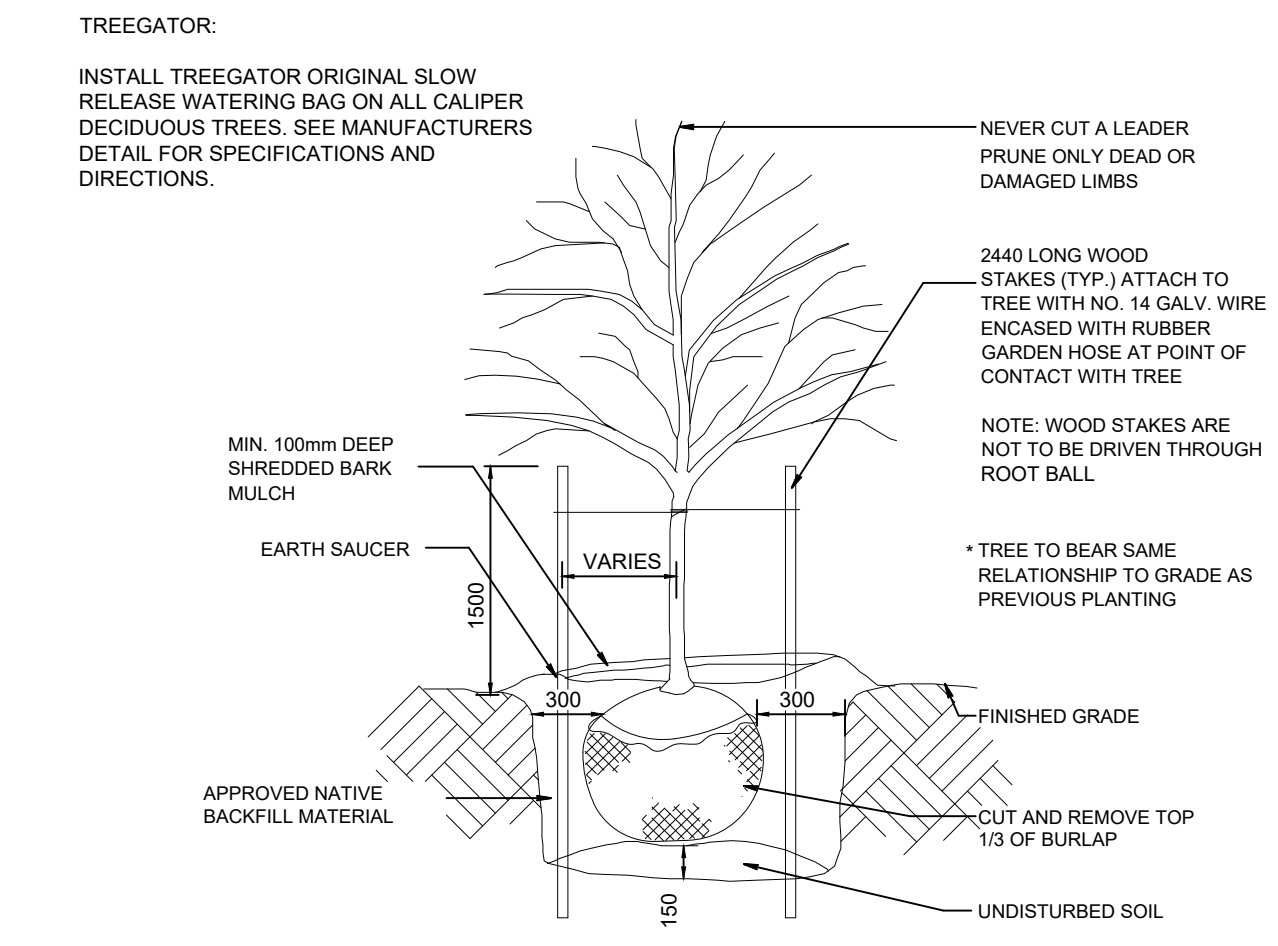
4 BIKE RACK DETAIL  
NTS



3 RIVER PEBBLE MULCH DETAIL  
NTS



2 SHRUB PLANTING DETAIL  
NTS



1 DECIDUOUS TREE PLANTING DETAIL  
NTS

4 BIKE RACK DETAIL  
NTS