

This drawing, as an instrument of service, is provided by and is the property of Graziani + Corazza Architects Inc. The contractor must verify and accept responsibility for all dimensions and conditions on site and must notify Graziani + Corazza Architects Inc. of any variations from the supplied information. Graziani + Corazza Architects Inc. is not responsible for the accuracy of survey, structural, mechanical, electrical, etc., engineering information shown on this drawing. Refer to the appropriate engineering drawings before proceeding with the work. Construction must conform to all applicable codes and requirements of the authorities having jurisdiction. Unless otherwise noted, no investigation has been undertaken or reported on by this office in regards to the environmental condition of this site.

This drawing is not to be scaled. All architectural symbols indicated on this drawing are graphic representations only.

Conditions for electronic information transfer

Electronic information is supplied to the other associated firms to assist them in the execution of their work. The recipient firm must determine the completeness/appropriateness/relevance of the information in respect to their particular responsibility.

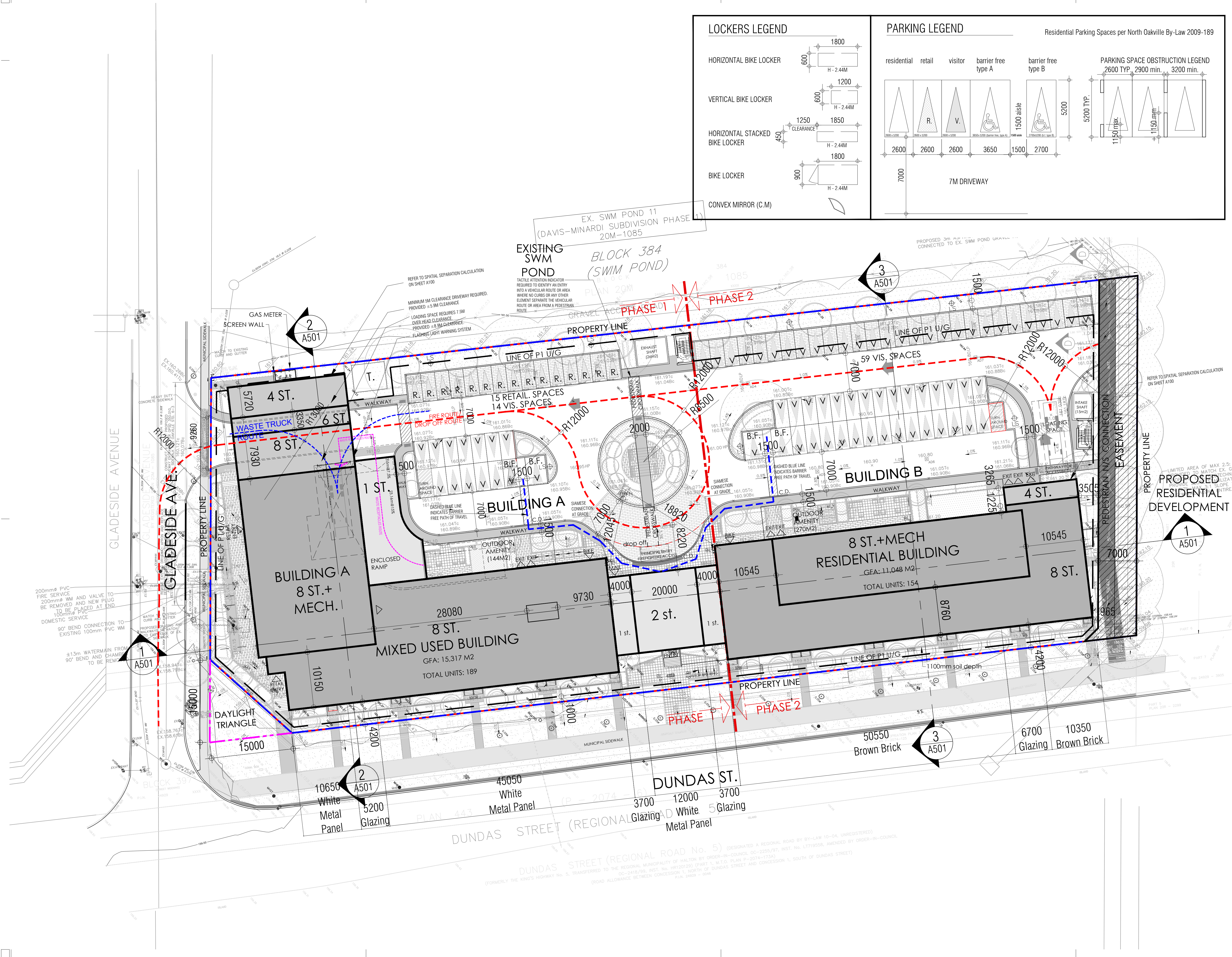
Graziani + Corazza Architects Inc. shall not be responsible for:

- Errors, omissions, incompleteness due to loss of information in whole or part when information is transferred.
- Transmission of any virus or damage to the receiving electronic system when information is transferred.

1. NOV.02.2022 ISSUED FOR SPA J. CHL
 2. JULY.07.2023 ISSUED FOR SPA J. CHL
 3. OCT.19.2023 ISSUED FOR SPA J. CHL
 4. MAR.01.2024 ISSUED FOR SPA J. CHL

General notes:

- Reinforced heavy duty concrete staging area (change in grade not greater than ±2%). Constructed to support a minimum of fully loaded waste truck (35 tonnes).
- A trained staff member is to be present on site at all times during City solid waste refuse collection to maneuver the container bins from garbage/recycling storage room to the collection pad and in front of the collection vehicle, return the bins to the respective storage rooms immediately upon collection and act as a flagsperson when the City's vehicle and other loading trucks are reversing.
- Snow storage is to be trucked off site.
- waste collection will be provided via front-end garbage collection. The collection of residential organic, and recycling materials will occur via totes.
- Flashing lights and sign at the top of the parking garage ramp to alert motorists coming up to watch for large vehicles loading operations going on head



issued for revisions

GRAZIANI + CORAZZA ARCHITECTS INC.

8400 JANE ST. BUILDING D SUITE 300 CONCORD, ONTARIO L4K 4L8
 T. 905.795.2601 F. 905.795.2844 WWW.GC-ARCHITECTS.COM

PROPOSED DEVELOPMENT

455-465 DUNDAS STREET WEST

RIONE DEVELOPMENT CORP. ONTARIO

Project Architect: J. Chimenti
 Assistant Designer: A. Hassan / B. Doadgostar
 Drawn By: B. Doadgostar
 Checked By: D. Blase
 Plot Date: MAR.26.2024
 Job #: 1944.21

LOCKERS LEGEND		PARKING LEGEND	
HORIZONTAL BIKE LOCKER		residential	retail
VERTICAL BIKE LOCKER		visitor	barrier free type A
HORIZONTAL STACKED BIKE LOCKER		barrier free type B	
BIKE LOCKER			
CONVEX MIRROR (C.M.)			

PARKING SPACE OBSTRUCTION LEGEND	
2600 TYP.	2900 min.
3200 min.	

7M DRIVEWAY

This drawing, as an instrument of service, is provided by and is the property of Graziani + Corazza Architects Inc. The contractor must verify and accept responsibility for all dimensions and conditions on site and must notify Graziani + Corazza Architects Inc. of any variations from the supplied information. Graziani + Corazza Architects Inc. is not responsible for the accuracy of survey, structural, mechanical, electrical, etc., engineering information shown on this drawing. Refer to the appropriate engineering drawings before proceeding with the work. Construction must conform to all applicable codes and requirements of the authorities having jurisdiction. Unless otherwise noted, no investigation has been undertaken or reported on by this office in regards to the environmental condition of this site.

This drawing is not to be scaled. All architectural symbols indicated on this drawing are graphic representations only.

Conditions for electronic information transfer

Electronic information is supplied to the other associated firms to assist them in the execution of their work. The recipient firm must determine the completeness/appropriateness/relevance of the information in respect to their particular responsibility.

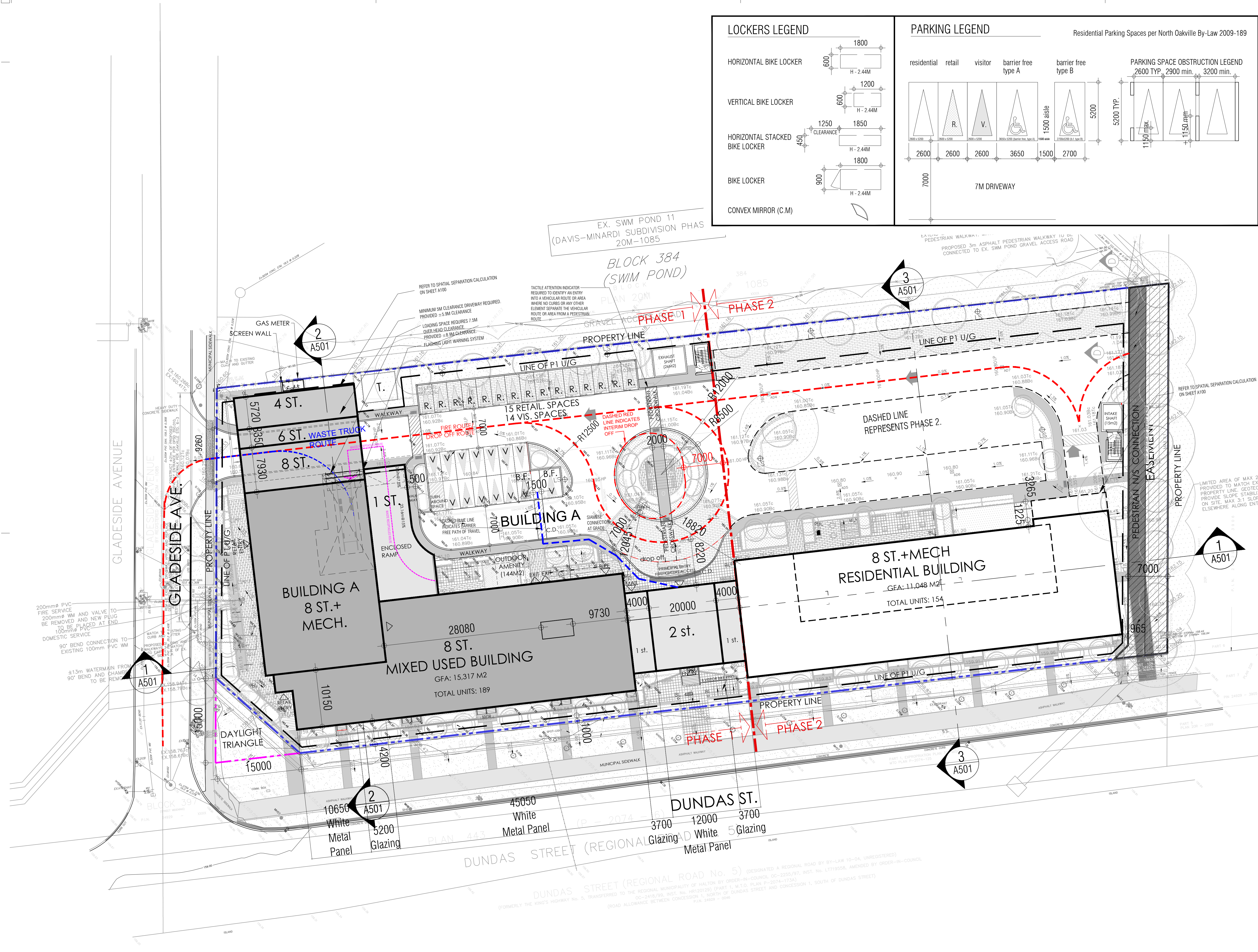
Graziani + Corazza Architects Inc. shall not be responsible for:

- Errors, omissions, incompleteness due to loss of information in whole or part when information is transferred.
- Transmission of any virus or damage to the receiving electronic system when information is transferred.

- NOV.02.2022 ISSUED FOR SPA J. CHL
- JULY.07.2023 ISSUED FOR SPA J. CHL
- OCT.19.2023 ISSUED FOR SPA J. CHL
- MAR.01.2024 ISSUED FOR SPA J. CHL

General notes:

- Reinforced heavy duty concrete staging area (change in grade not greater than ±2%). Constructed to support a minimum of fully loaded waste truck (35 tonnes).
- A trained staff member is to be present on site at all times during City solid waste refuse collection to maneuver the container bins from garbage/recycling storage room to the collection pad and in front of the collection vehicle, return the bins to the respective storage rooms immediately upon collection and act as a flagsperson when the City's vehicle and other loading trucks are reversing.
- Snow storage is to be trucked off site.
- waste collection will be provided via front-end garbage collection. The collection of residential organic, and recycling materials will occur via totes.
- Flashing lights and sign at the top of the parking garage ramp to alert motorists coming up to watch for large vehicles loading operations going on head



issued for revisions

1	2	3
---	---	---

GRAZIANI + CORAZZA ARCHITECTS INC.

8400 JANE ST. BUILDING D SUITE 300 CONCORD, ONTARIO L4K 4L6
 T. 905.795.2601 F. 905.795.2844 WWW.GC-ARCHITECTS.COM

PROPOSED DEVELOPMENT

455-465 DUNDAS STREET WEST

RIONE DEVELOPMENT CORP. ONTARIO

Project Architect: J. Chimenti
 Assistant Designer: A. Hassan / B. Dadgostar
 Drawn By: B. Dadgostar
 Checked By: D. Biase
 Plot Date: MAR.26.2024
 Job #: 1944.21

PHASE 1
INTERIM SITE PLAN