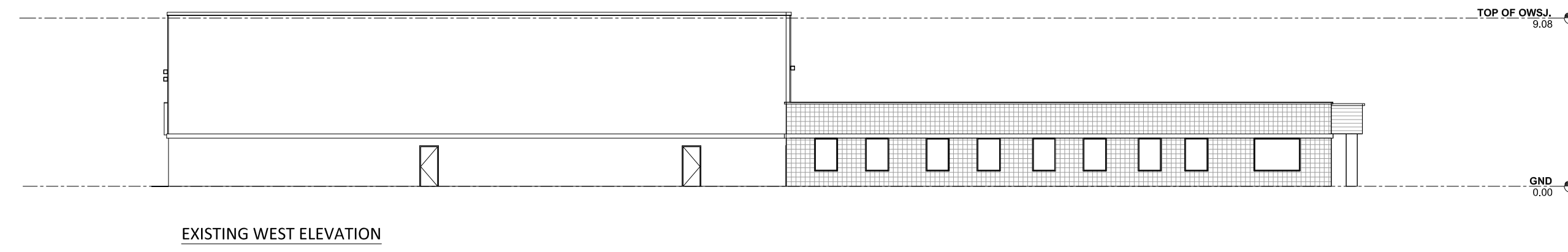
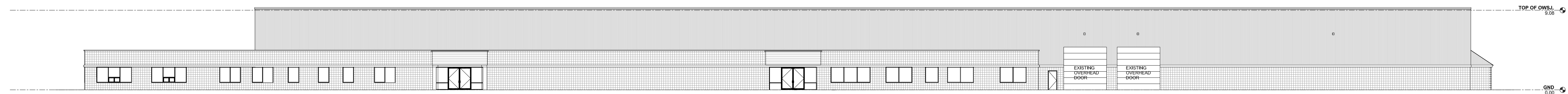


Issued:

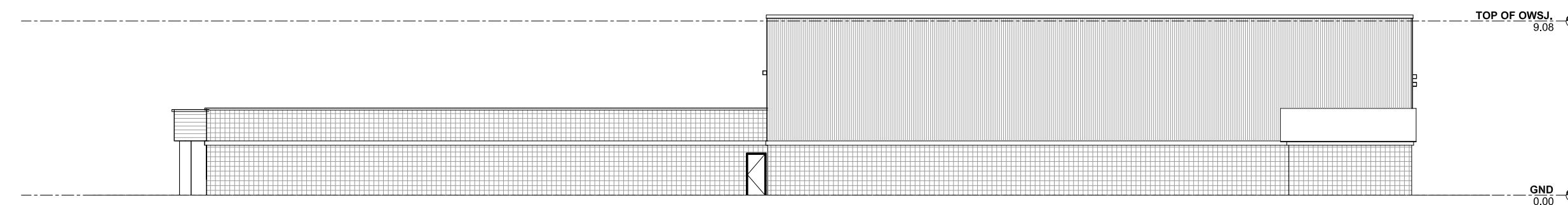
Issued for SPA	Sept. 13, 2024
Issued for Coordination	August 25, 2024
Issued for Coordination	July 8, 2024
Issued for Coordination	May 15, 2024
Issued for Coordination	Apr. 23, 2024
Issued for Coordination	Jan. 29, 2024
Description:	Date:



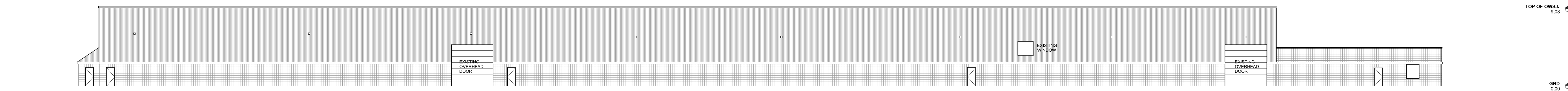
EXISTING WEST ELEVATION



EXISTING SOUTH ELEVATION



EXISTING EAST ELEVATION



EXISTING NORTH ELEVATION



- General Notes:
1. These Contract Documents are the property of the Architect. The Architect bears no responsibility for the interpretations of these documents by the Contractor. Upon written application the Architect will provide written clarification or supplementary information regarding the intent of the Contract Documents. The Architect will review Shop Drawings submitted by the Contractor for design conformance only.
 2. Drawings are not to be scaled for construction. Contractor to verify all existing conditions and dimensions required to perform the Work and report any discrepancies with the Contract Documents to the Architect before commencing work.
 3. Positions of exposed or finished mechanical or electrical devices, fittings, and fixtures are indicated on the Architectural drawings. The locations shown on the Architectural drawings govern over the Mechanical and Electrical drawings. Those items not clearly located will be located as directed by the Architect.

3601 Highway 7 East, Unit 1004
 Markham, ON L3R 0M3
 Tel: 289-597-3911
 Email: info@alma-engineering.com
 www.alma-engineering.com

Rostami Atash

t. 416 230 3467
 www.rostamiatash.ca

RENOVATION & ADDITION TO MANUFACTURING FACILITY
 2775 Coventry Rd,
 Oakville, Ontario
 L6H 5V9

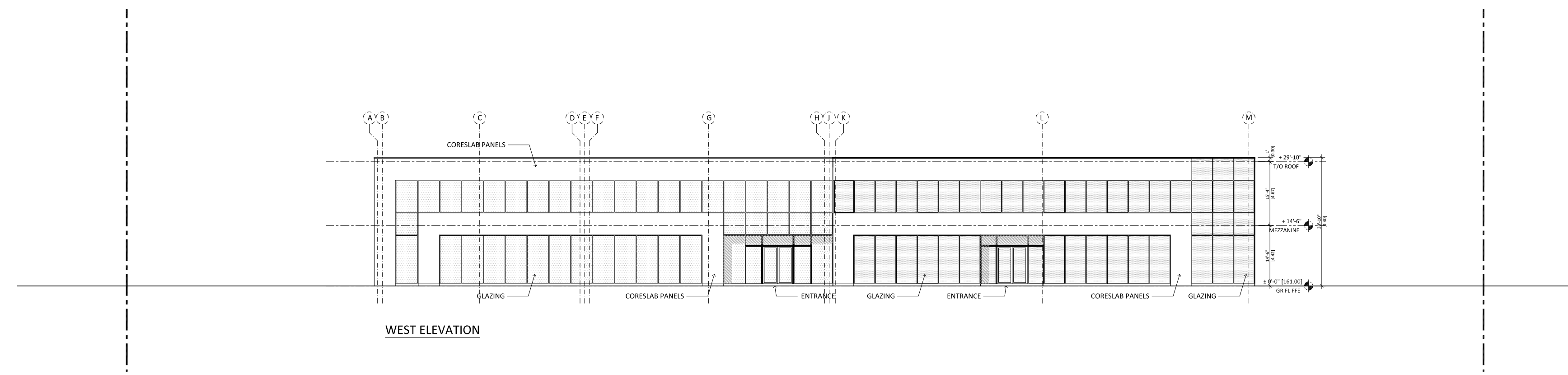
EXISTING ELEVATIONS

Project No.: 2401
 Scale: 1:250
 Date: Jan., 2024
 Drawn by: BA, HR

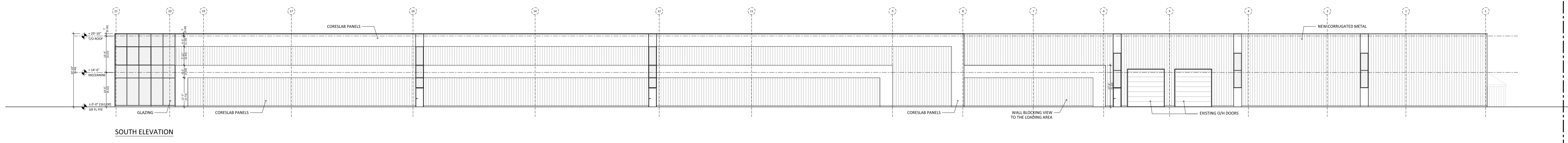
Drawing No.: **A2.50**

Issued:

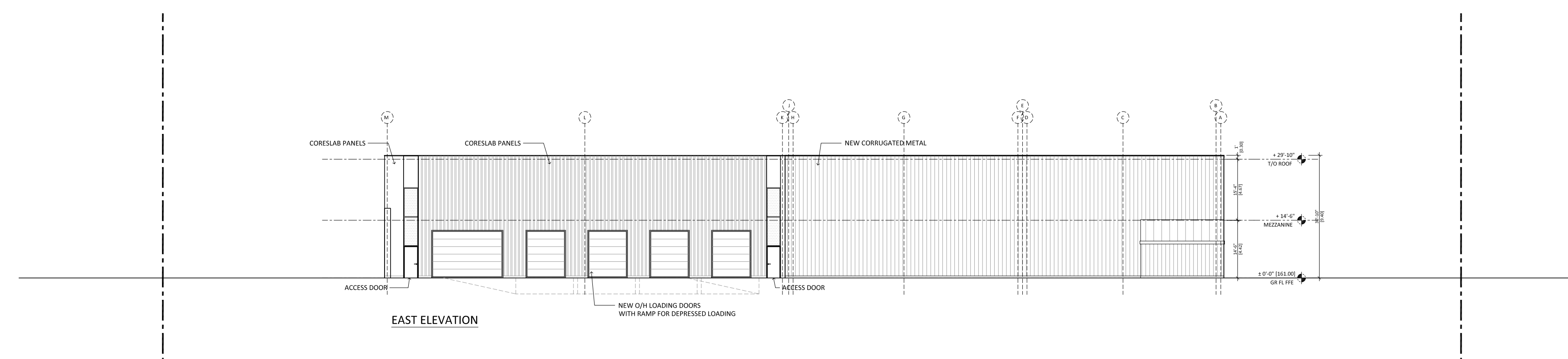
Issued for SPA	Sept. 13, 2024
Issued for Coordination	August 25, 2024
Issued for Coordination	July 8, 2024
Issued for Coordination	May 15, 2024
Issued for Coordination	Apr. 23, 2024
Issued for Coordination	Jan. 29, 2024
Description:	Date:



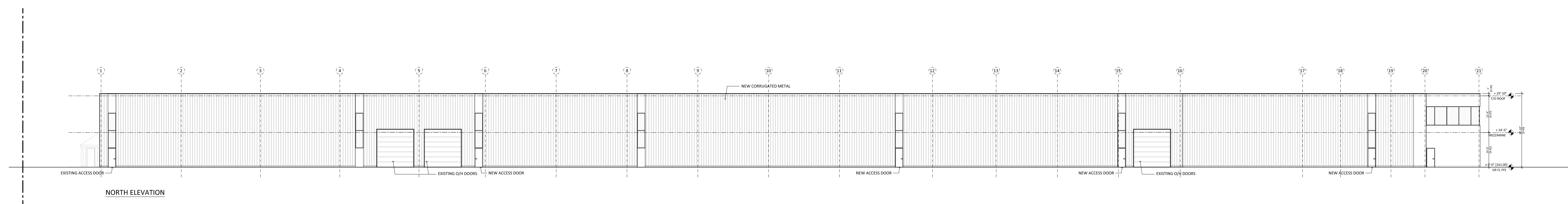
WEST ELEVATION



SOUTH ELEVATION



EAST ELEVATION



NORTH ELEVATION



- General Notes:
1. These Contract Documents are the property of the Architect. The Architect bears no responsibility for the interpretations of these documents by the Contractor. Upon written application the Architect will provide written clarification or supplementary information regarding the intent of the Contract Documents. The Architect will review Shop Drawings submitted by the Contractor for design conformance only.
 2. Drawings are not to be scaled for construction. Contractor to verify all existing conditions and dimensions required to perform the Work and report any discrepancies with the Contract Documents to the Architect before commencing work.
 3. Positions of exposed or finished mechanical or electrical devices, fittings, and fixtures are indicated on the Architectural drawings. The locations shown on the Architectural drawings govern over the Mechanical and Electrical drawings. Those items not clearly located will be located as directed by the Architect.

ALMA GROUP
ENGINEERING

3601 Highway 7 East, Unit 1004
Markham, ON L3R 0M5
Tel: 289-597-3911
Email: info@alma-engineering.com
www.alma-engineering.com

Rostami Atash

t. 416 230 3467
www.rostamiatash.ca

RENOVATION & ADDITION TO MANUFACTURING FACILITY

2775 Coventry Rd.
Oakville, Ontario
L6H 5V9

PROPOSED ELEVATIONS

Project No.: 2401
Scale: 1 : 250
Date: Jan., 2024
Drawn by: BA, HR

Drawing No.:

A5.00