

**KEY PLAN**  
N.T.S.

**LEGEND**

- LIMIT OF EAGLEWOOD DEVELOPMENT
- EXISTING STORM SEWER
- EXISTING STORM MANHOLE ID
- EXISTING GROUND ELEVATION
- EXISTING SEWER INVERTS
- EXISTING STORM DRAINAGE BOUNDARY
- EXISTING DRAINAGE AREA
- EXISTING RUNOFF COEFFICIENT
- EXISTING OVERLAND FLOW ROUTE
- EXISTING CONTOUR & ELEVATION

**BENCHMARK**  
ELEVATIONS ARE REFERRED TO TOWN OF OAKVILLE BENCHMARK No. 101 HAVING A PUBLISHED ELEVATION OF 115.838 METRES.

**ELEVATION NOTE**  
ELEVATIONS ARE OF GEODETIC ORIGIN (CGVD-1928-78) AND ARE DERIVED FROM GNSS OBSERVATIONS AND NATURAL RESOURCES CANADA'S GEODIC MODEL HT 2.0.

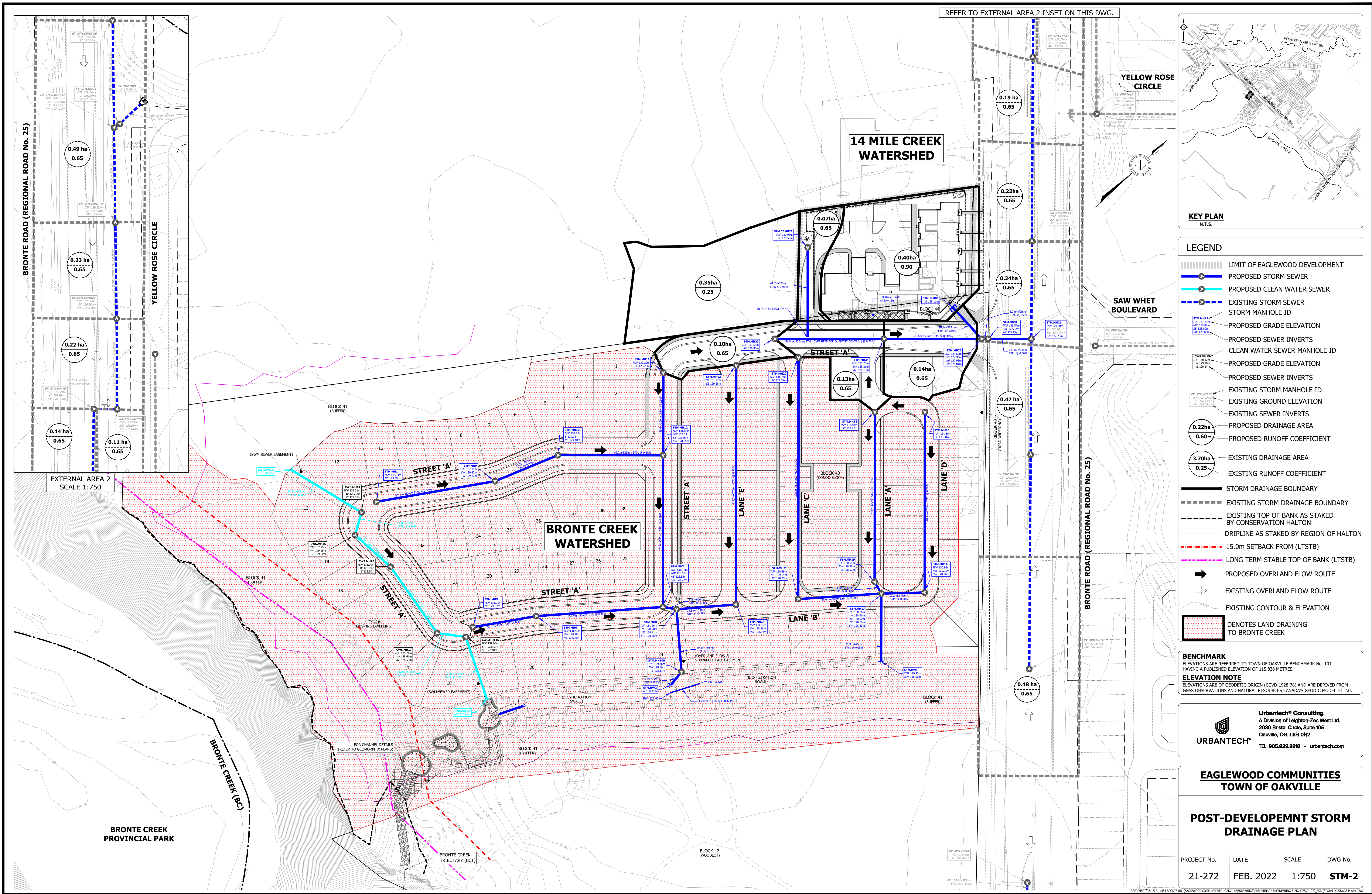
**URBANTECH® Consulting**  
A Division of Leighton-Zec West Ltd.  
2030 Bristol Circle, Suite 105  
Oakville, ON, L6H 0H2  
TEL 905.829.8818 • urbantech.com

**EAGLEWOOD COMMUNITIES  
TOWN OF OAKVILLE**

**PRE-DEVELOPMENT STORM  
DRAINAGE PLAN**

PROJECT No.	DATE	SCALE	DWG No.
21-272	FEB. 2022	1:750	STM-1

P:\PROJECTS\21-272-154 BRONTE RD (EAGLEWOOD COMM. VALLEY - OAKVILLE)\DRAWINGS\PRELIMINARY ENGINEERING & FIGURES\21-272\_154-PR-DEVELOPMENT STORM DRAINAGE PLAN.DWG



REFER TO EXTERNAL AREA 2 INSET ON THIS DWG.



**KEY PLAN**  
N.T.S.

**LEGEND**

- LIMIT OF EAGLEWOOD DEVELOPMENT
- PROPOSED STORM SEWER
- PROPOSED CLEAN WATER SEWER
- EXISTING STORM SEWER
- STORM MANHOLE ID
- PROPOSED GRADE ELEVATION
- PROPOSED SEWER INVERTS
- CLEAN WATER SEWER MANHOLE ID
- PROPOSED GRADE ELEVATION
- PROPOSED SEWER INVERTS
- EXISTING STORM MANHOLE ID
- EXISTING GROUND ELEVATION
- EXISTING SEWER INVERTS
- PROPOSED DRAINAGE AREA
- PROPOSED RUNOFF COEFFICIENT
- EXISTING DRAINAGE AREA
- EXISTING RUNOFF COEFFICIENT
- STORM DRAINAGE BOUNDARY
- EXISTING STORM DRAINAGE BOUNDARY
- EXISTING TOP OF BANK AS STAKED BY CONSERVATION HALTON
- DRIPLINE AS STAKED BY REGION OF HALTON
- 15.0m SETBACK FROM (LTSTB)
- LONG TERM STABLE TOP OF BANK (LTSTB)
- PROPOSED OVERLAND FLOW ROUTE
- EXISTING OVERLAND FLOW ROUTE
- EXISTING CONTOUR & ELEVATION
- DENOTES LAND DRAINING TO BRONTE CREEK

**BENCHMARK**  
ELEVATIONS ARE REFERRED TO TOWN OF OAKVILLE BENCHMARK No. 101 HAVING A PUBLISHED ELEVATION OF 115.838 METRES.

**ELEVATION NOTE**  
ELEVATIONS ARE OF GEODETIC ORIGIN (CGVD-1928-78) AND ARE DERIVED FROM GNSS OBSERVATIONS AND NATURAL RESOURCES CANADA'S GEODIC MODEL HT 2.0.

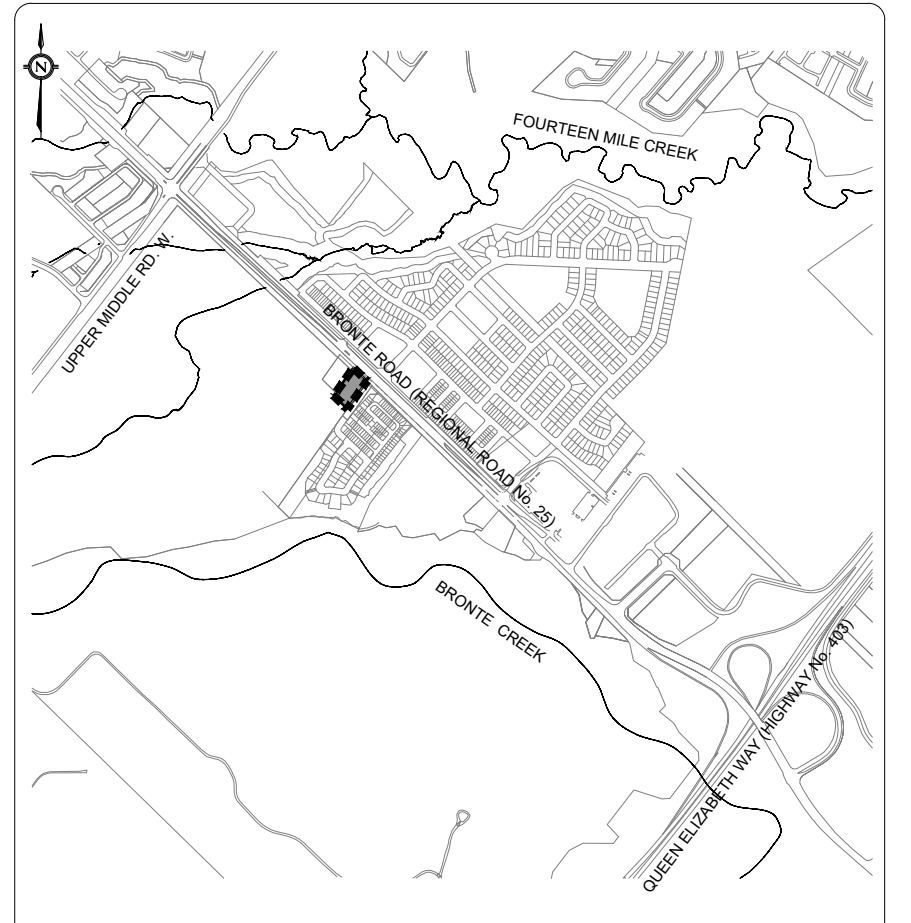
**URBANTECH® Consulting**  
A Division of Leighton-Zec West Ltd.  
2030 Bristol Circle, Suite 105  
Oakville, ON, L6H 0H2  
TEL 905.829.8818 • urbantech.com

**EAGLEWOOD COMMUNITIES  
TOWN OF OAKVILLE**

**POST-DEVELOPEMNT STORM  
DRAINAGE PLAN**

PROJECT No.	DATE	SCALE	DWG No.
21-272	FEB. 2022	1:750	STM-2

PROJECT: 21-272 - 1354 BRONTE RD (EAGLEWOOD COMM. VALLEY - OAKVILLE) DRAWING: PRELIMINARY ENGINEERING & PROGRESSIVE DESIGN - STORM DRAINAGE PLAN



- LEGEND**
- LIMIT OF EAGLEWOOD DEVELOPMENT
  - PROPOSED SANITARY SEWER
  - EXISTING SANITARY SEWER
  - SANITARY MANHOLE ID  
PROPOSED GROUND ELEVATION  
PROPOSED SEWER INVERTS
  - EXISTING SANITARY MANHOLE ID  
EXISTING GROUND ELEVATION  
EXISTING SEWER INVERTS
  - PROPOSED DRAINAGE AREA  
PROPOSED POPULATION  
PROPOSED # OF UNITS/OR POPULATION PER HECTARE
  - SANITARY DRAINAGE BOUNDARY
  - OTHER LANDS CONTRIBUTING TO THE SANITARY SEWER NETWORK  
BRONTE RIVER LIMITED PARTNERSHIP DEVELOPMENT

**BENCHMARK**  
ELEVATIONS ARE REFERRED TO TOWN OF OAKVILLE BENCHMARK No. 101 HAVING A PUBLISHED ELEVATION OF 115.839 METRES.

**ELEVATION NOTE**  
ELEVATIONS ARE OF GEODETIC ORIGIN (CGVD-1928-78) AND ARE DERIVED FROM GNSS OBSERVATIONS AND NATURAL RESOURCES CANADA'S GEODIC MODEL HT 2.0.

**URBANTECH® Consulting**  
A Division of Leighton-Zec West Ltd.  
2030 Bristol Circle, Suite 105  
Oakville, ON. L6H 0H2  
TEL 905.829.8818 • urbantech.com

**EAGLEWOOD COMMUNITIES  
TOWN OF OAKVILLE**

**PRELIMINARY SANITARY  
DRAINAGE PLAN**

PROJECT No.	DATE	SCALE	DWG No.
21-272	FEB. 2022	1:750	SAN-1

