

CONTRACTOR TO VERIFY THE PRECISE LOCATIONS AND INVERT ELEVATIONS OF EX. UNDERGROUND SERVICES AND EX. UTILITIES PRIOR TO STARTING CONSTRUCTION

ANY DISTURBED AREA DURING CONSTRUCTION TO BE RESTORED TO THE ORIGINAL CONDITION OR BETTER TO THE SATISFACTION OF THE AUTHORITIES HAVING JURISDICTION

NOTE:
ALL EXISTING BUILDINGS, POST & WIRE FENCE, TREES, UTILITY POLES, CULVERTS AND RETAINING WALLS, ETC. WITHIN LOTS AND BLOCKS TO BE REMOVED, UNLESS OTHERWISE NOTED

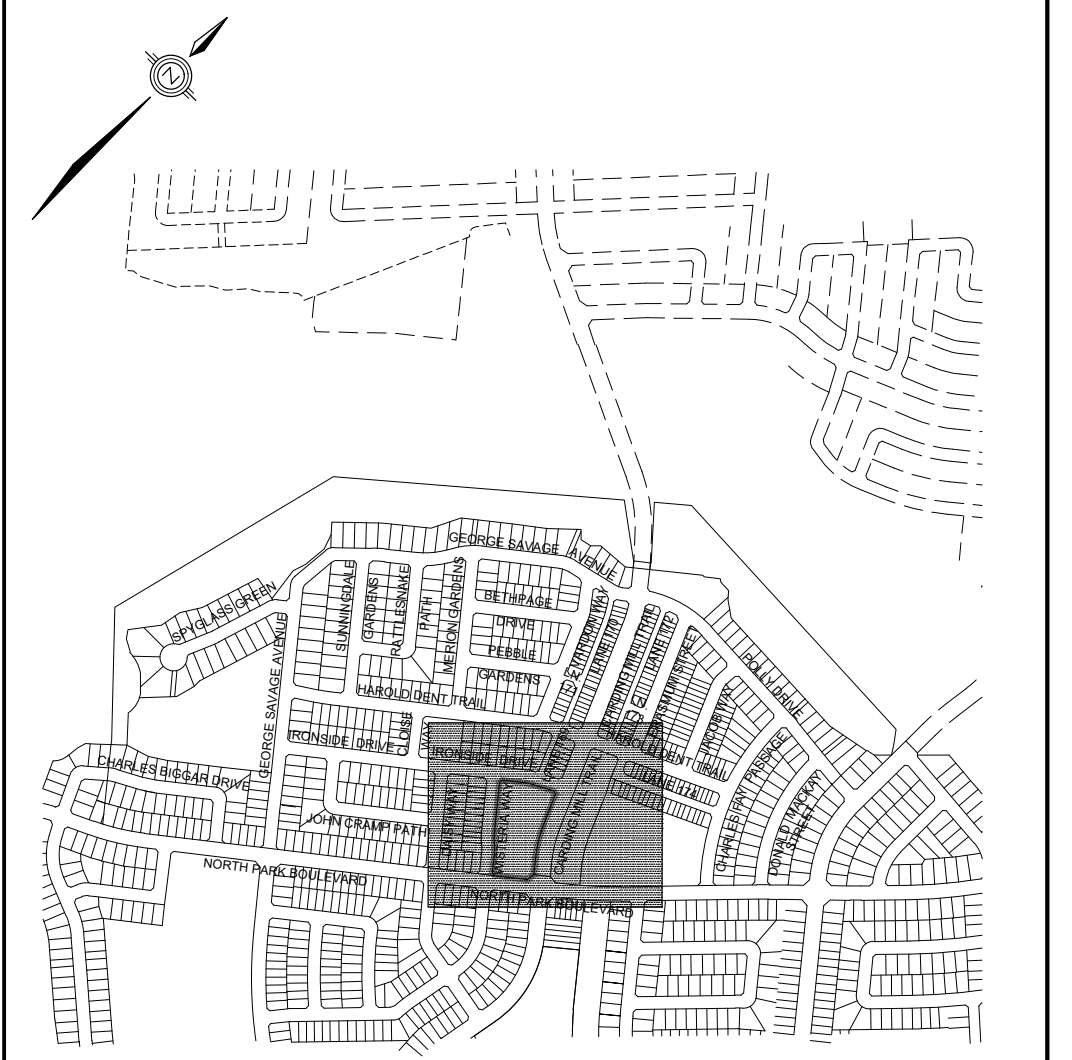
NOTE:
ELEVATIONS SHOWN ON THE FUTURE STREETS, LOTS AND BLOCKS ARE FUTURE ELEVATIONS, UNLESS OTHERWISE NOTED

NOTE:
TEMPORARY CUT-OFF SWALES TO BE PLACED WITH TOPSOIL AND SEED TO THE SATISFACTION OF AUTHORITIES HAVING JURISDICTION

NOTE:
FOR SERVICING, GRADING, ROAD / PARKING LOTS AND EROSION CONTROL NOTES, REFER TO DRAWING No. 1

NOTE: SUMP PUMP FOR FLOOD PROTECTION, SUMP PUMP TO BE PROVIDED FOR ALL UNDERGROUND PARKING FACILITIES. REFER TO MECHANICAL DRAWINGS FOR DETAIL, WHERE APPLICABLE.

- LEGEND**
- 165.71 PROPOSED ELEVATION
 - 162.11 EXISTING ELEVATION
 - [161.35] FUTURE PROPOSED ELEVATION
 - 160.50 EXISTING CONTOUR ELEVATION
 - SWALE
 - 3:1 MAXIMUM SLOPE
 - STORM MANHOLE
 - SANITARY MANHOLE
 - SANITARY MANHOLE BY OTHERS
 - HYDRANT
 - TEE
 - VALVE & BOX
 - SINGLE CATCHBASIN
 - DOUBLE CATCHBASINS
 - MOUNTABLE CURB (OPSD 600.060)
 - BARRIER CURB WITH DEPRESSED SECTION (OPSD 600.110, UNLESS NOTED OTHERWISE)
 - CONCRETE SIDEWALK RAMP (OPSD 310.033)
 - RETAINING WALL (SEE NOTES ON DWG 1 & LANDSCAPE DWG FOR DETAILS)
 - PROPOSED OVERLAND FLOW DIRECTION
 - EXTERNAL OVERLAND FLOW DIRECTION
 - EMERGENCY OVERLAND FLOW DIRECTION
 - HYDRO TRANSFORMER
 - LIGHT STANDARD
 - SLAB ON GRADE UNIT
 - BOREHOLE LOCATIONS
 - DOWNSPOUT



KEY PLAN
SCALE 1:10000

TOPOGRAPHIC INFORMATION
TOPOGRAPHIC INFORMATION PROVIDED BY RADY-PENK & EDWARD SURVEYING LTD., JOB No. 16-146, TOPOGRAPHIC SURVEY DATED ON JULY 5, 2016 AND DATED JULY 20, 2016.

SITE PLAN INFORMATION
SITE PLAN PROVIDED BY O4 ARCHITECTS INC., JOB No. 21010, RECEIVED ON MAY 8, 2023.

NOT FOR CONSTRUCTION

BENCHMARK NOTE
ELEVATIONS ARE GEODETIC AND ARE REFERRED TO MINISTRY OF TRANSPORTATION ONTARIO FIRST ORDER SURVEY BENCHMARK MARK NUMBER 0081981814 HAVING AN ORTHOMETRIC ELEVATION OF 186.94 METRES. ELEVATIONS ARE REFERRED TO THE CANADIAN GEODETIC VERTICAL DATUM OF 1928, 1978 ADJUSTMENT (CGVD-1928/1978).
3.16 M WITH PRECISION OF BENCHMARK MARK NO. 12 ON THE EAST SIDE OF BURNHAMTHORPE RD, 138.7 M EAST OF THE I.C.T. OF BURNHAMTHORPE RD AND SIXTH LINE RD IN OAKVILLE, AND 9.1 M NORTH OF CENTRELINE OF BURNHAMTHORPE RD, BENCH MARK IS SET 1.1 M SOUTH OF NORTH RIGHT-OF-WAY FENCE OF BURNHAMTHORPE RD AND IS MARKED BY A STEEL MARKER 46 CM EAST OF BENCH MARK.

No.	DATE	BY
3.	23-05-26	K.S.
2.	22-11-11	K.M.
1.	22-06-13	K.M.

DESIGNED BY:	P.F./T.H.	CHECKED BY:	K.M.	DATE	JUNE 2022
DRAWN BY:	T.H.	CHECKED BY:	P.F.		

SCALE	HORIZ. 1:400	VERT. 1:100	REFERENCES
	0 4 8 12 16		

MUNICIPAL APPROVAL	FIELD NOTES
APPROVED IN PRINCIPLE SUBJECT TO DETAIL CONSTRUCTION CONFORMING TO TOWN OF OAKVILLE STANDARDS AND SPECIFICATIONS	BELL <input type="checkbox"/> HYDRO <input type="checkbox"/>
MANAGER OF DEVELOPMENT ENGINEERING	GAS <input type="checkbox"/> CABLE <input type="checkbox"/>
	TRAFFIC <input type="checkbox"/> WATER <input type="checkbox"/>

REGIONAL APPROVAL	STAMP
DESIGN OF SANITARY, WATER SERVICES AND REGIONAL ROAD WORKS APPROVED SUBJECT TO DETAIL CONSTRUCTION CONFORMING TO HALTON REGION STANDARDS & SPECIFICATIONS & LOCALITIONAL APPROVAL FROM AREA MUNICIPALITY	

DSEL 600 Alden Road, Suite 700
Markham, Ontario, L3R 0E7
Tel: (905) 475-3080
Fax: (905) 475-3081
www.DSEL.ca

OAKVILLE
DEVELOPMENT ENGINEERING

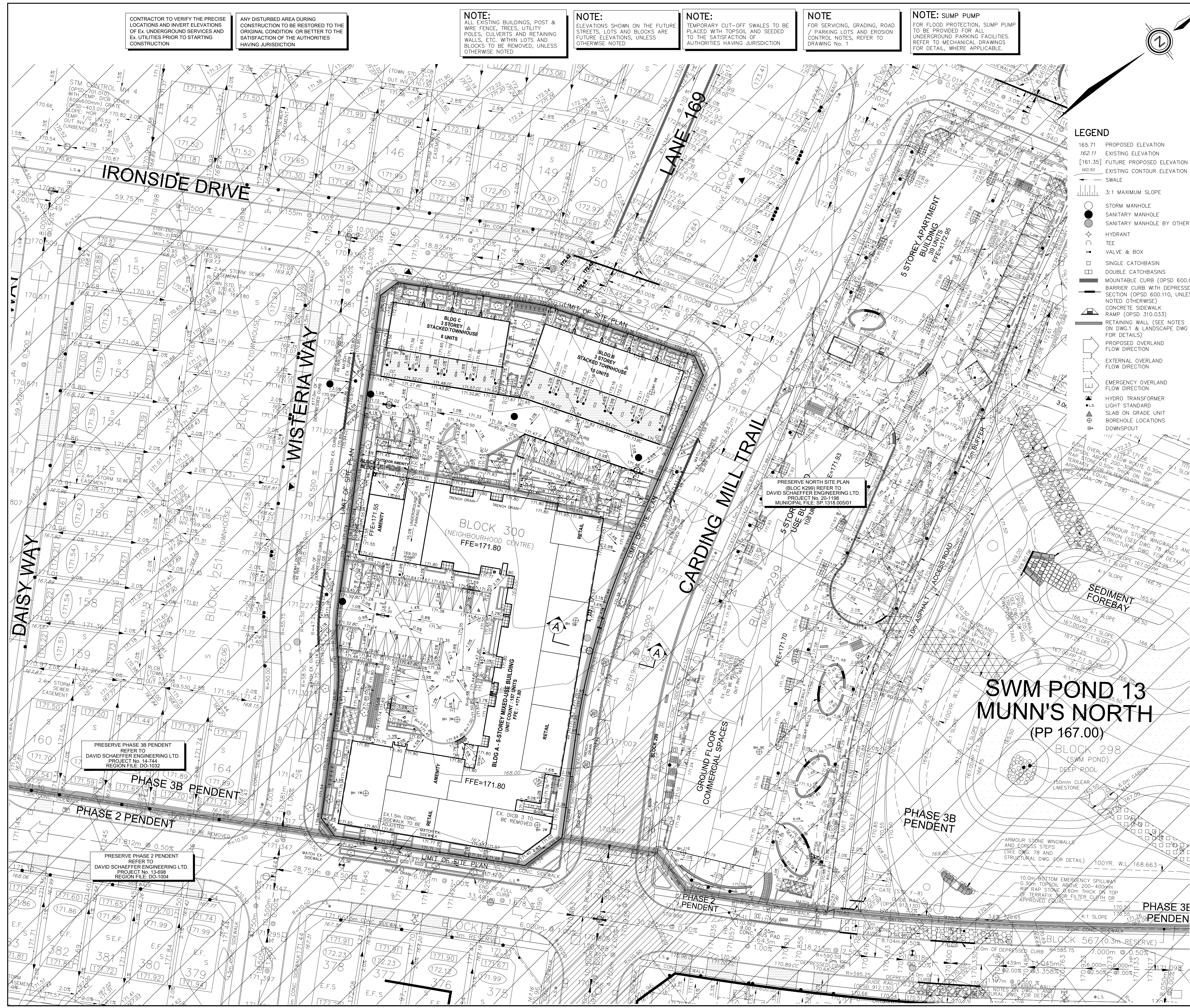
Halton The Regional Municipality of Halton

DEVELOPER
PENDENT DEVELOPMENTS LTD.

DEVELOPMENT MANAGER
PRESERVE NORTH SITE PLAN (BLOCK 300)
3250 CARDING MILL TRAIL, 256-292 IRONSIDE DRIVE

TITLE
GRADING PLAN

MUNICIPAL FILE NO.	XX.XXXXXX	REGIONAL FILE NO.	XXXXXX
PROJECT NO.	22-1291	SHEET	3 OF 9



SWM POND 13
MUNN'S NORTH
(PP 167.00)

PRESERVE PHASE 3B PENDENT REFER TO DAVID SCHAEFFER ENGINEERING LTD. PROJECT No. 14-744 REGION FILE: DC-1032

PRESERVE PHASE 2 PENDENT REFER TO DAVID SCHAEFFER ENGINEERING LTD. PROJECT No. 15-698 REGION FILE: DC-1004

PRESERVE PHASE 2 PENDENT REFER TO DAVID SCHAEFFER ENGINEERING LTD. PROJECT No. 15-698 REGION FILE: DC-1004

PRESERVE NORTH SITE PLAN (BLOCK 300) REFER TO DAVID SCHAEFFER ENGINEERING LTD. PROJECT No. 20-1188 MUNICIPAL FILE: SP-1318.05501

© DSEL