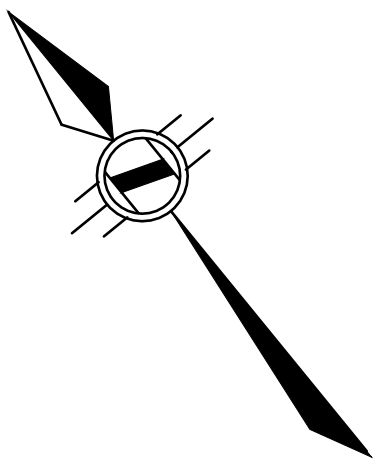
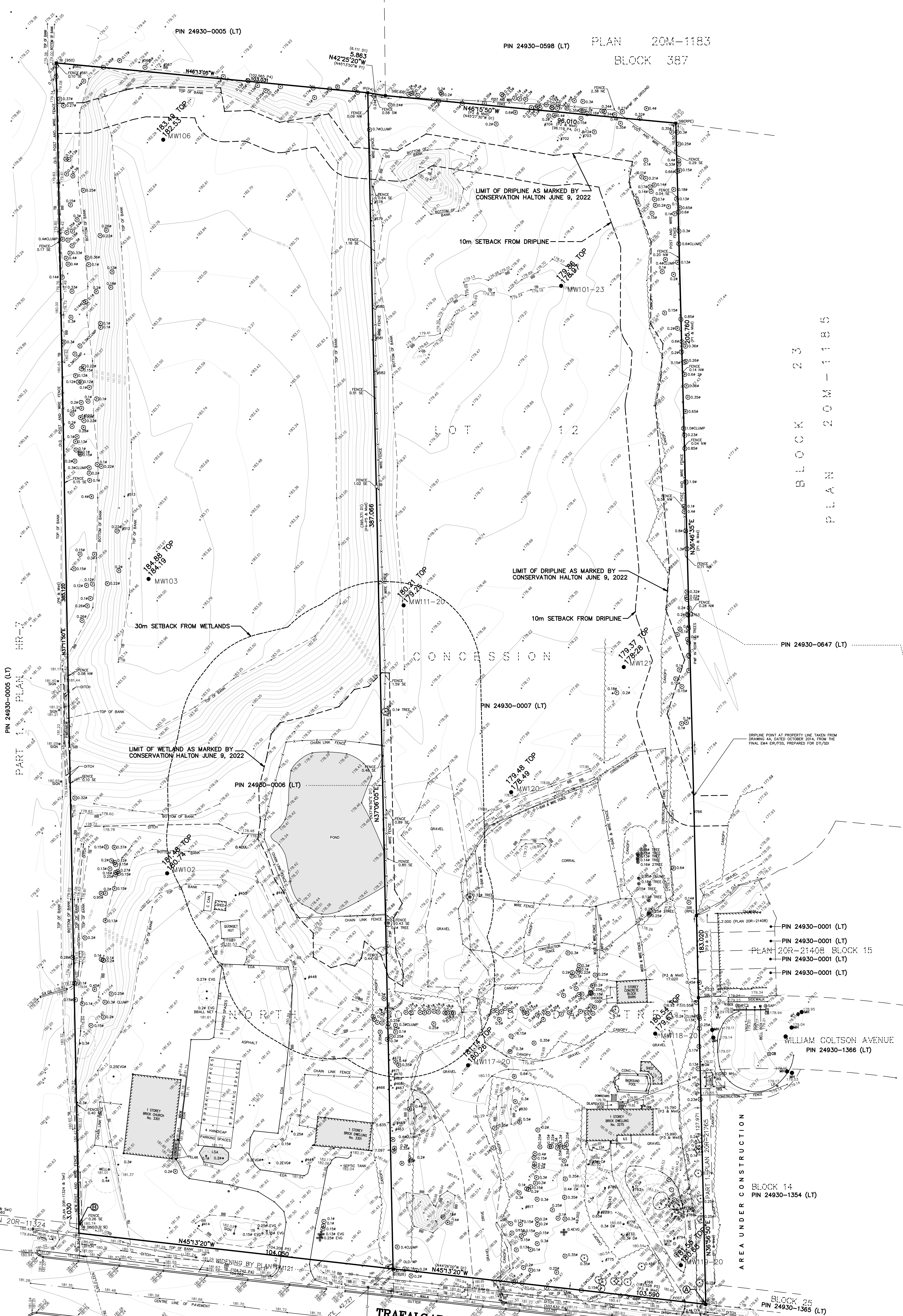


PART 1. PLAN HR-7



PIN 24930-0598 (LT) PLAN 20M-1183  
 BLOCK 387

BLOCK 23  
 PLAN 20M-1185



- LEGEND:**
- MONUMENT SET
  - MONUMENT FOUND
  - STANDING IRON BAR
  - IRON PIPE
  - SHORT STANDING IRON BAR
  - A.L. MCLAREN, O.L.S.
  - J.D. BARNES LIMITED
  - CROWN SURVEYING LTD
  - CROWN SURVEYING
  - M44
  - M45
  - M46
  - M47
  - M48
  - M49
  - M50
  - M51
  - M52
  - M53
  - M54
  - M55
  - M56
  - M57
  - M58
  - M59
  - M60
  - M61
  - M62
  - M63
  - M64
  - M65
  - M66
  - M67
  - M68
  - M69
  - M70
  - M71
  - M72
  - M73
  - M74
  - M75
  - M76
  - M77
  - M78
  - M79
  - M80
  - M81
  - M82
  - M83
  - M84
  - M85
  - M86
  - M87
  - M88
  - M89
  - M90
  - M91
  - M92
  - M93
  - M94
  - M95
  - M96
  - M97
  - M98
  - M99
  - M100

**BENCHMARK:**  
 MONUMENT 0081981815  
 81815: CONCRETE CULVERT UNDER  
 BURHAMTHORPE RD., 221.5 M  
 WEST OF THE JCT OF BURHAMTHORPE  
 RD AND TRAFALGAR RD IN  
 OAKVILLE AND 5.8 M NORTH OF  
 CENTRELINE OF BURHAMTHORPE RD.  
 TABLE IS SET VERTICALLY IN TOP  
 OF NORTH END OF CULVERT, 74  
 CM SOUTH OF NORTH END OF CULVERT  
 AND 85 CM EAST OF WEST FACE  
 OF CULVERT.  
 ELEVATION: 185.692 metres CGVD-1928-1978

**METRIC NOTE**  
 DISTANCES SHOWN ON THIS  
 PLAN ARE IN METRES AND  
 CAN BE CONVERTED TO FEET  
 BY DIVIDING BY 0.3048

**NOTE:**  
 UNDERGROUND SERVICE AND UTILITY LOCATIONS MUST BE  
 VERIFIED PRIOR TO CONSTRUCTION  
 INVERTS MUST BE VERIFIED PRIOR TO CONSTRUCTION

**BEARING NOTE:**  
 BEARINGS ARE UTM GRID, DERIVED FROM OBSERVED  
 REFERENCE POINTS A AND B, BY REAL-TIME NETWORK  
 OBSERVATIONS, UTM ZONE 17, NAD83 (CSRS) (1997.0)

**NOTE:**  
 DISTANCES ARE GROUND AND CAN BE CONVERTED TO GRID BY  
 MULTIPLYING BY THE COMBINED SCALE FACTOR OF 0.9997068019

**INTEGRATION DATA**

POINT ID	UTM EASTING	UTM NORTHING
CP1	485228.470	620291.567
CP2	485228.470	620291.567
CP3	485228.470	620291.567
CP4	485228.470	620291.567
CP5	485228.470	620291.567
CP6	485228.470	620291.567
CP7	485228.470	620291.567
CP8	485228.470	620291.567
CP9	485228.470	620291.567
CP10	485228.470	620291.567

**SURVEYOR'S CERTIFICATE:**  
 I, THE SURVEYOR, HAVE BEEN ADVISED BY THE  
 SURVEYOR THAT THE SURVEYORS ACT AND THE REGULATIONS  
 MADE THEREUNDER.  
 2. THE SURVEY WAS COMPLETED ON THE 9th DAY OF JUNE, 2022

**REVISIONS**

No.	DESCRIPTION	DATE	BY
1	ADD MONITOR M10	JUN 4, 2021	SD
2	ADD MONITOR M11	JUN 4, 2021	SD
3	ADD MONITOR M12	JUN 4, 2021	SD

**DATE:** JUNE 22, 2022  
**SURVEYOR:** S. DAN McLAREN, O.L.S.