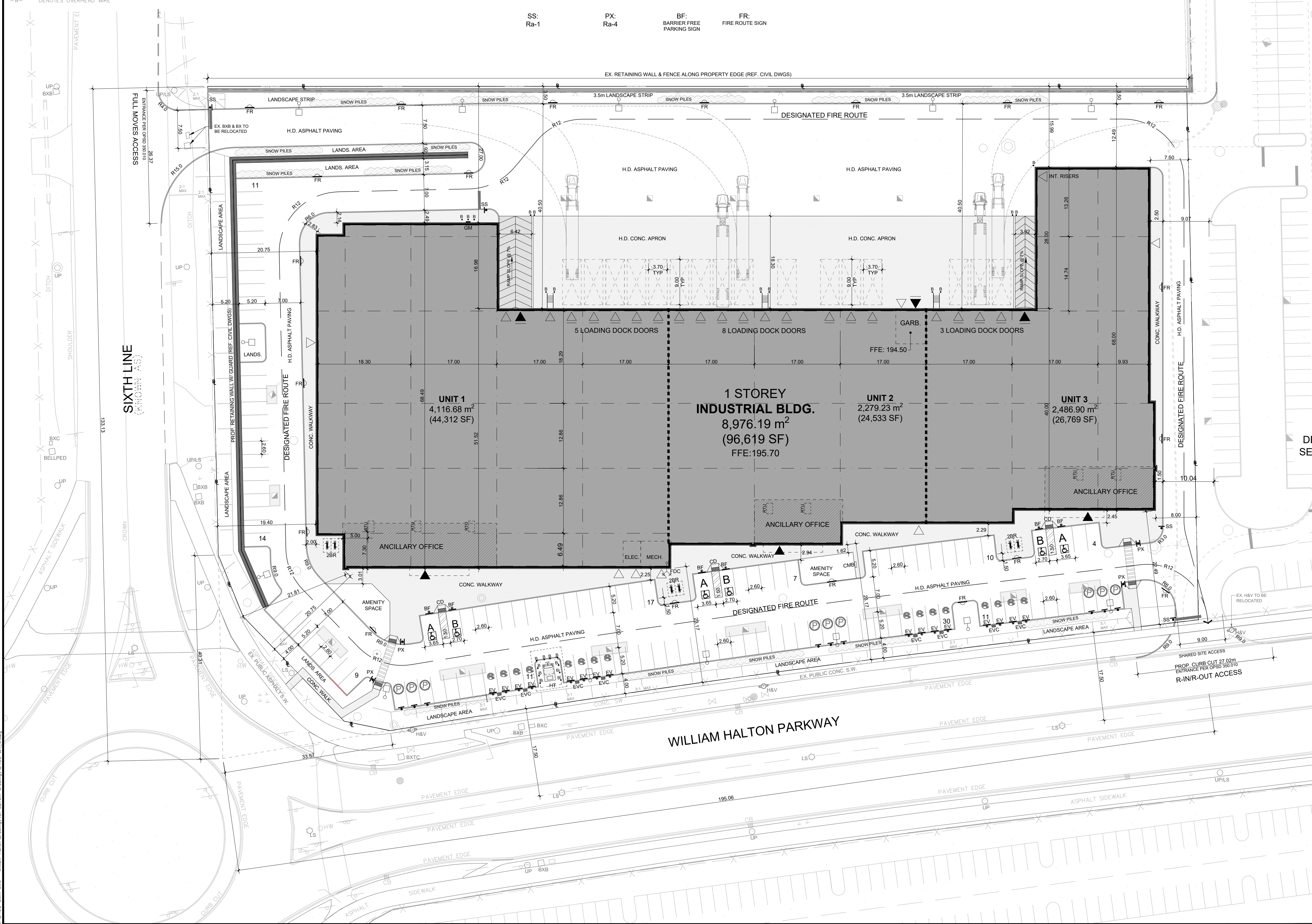
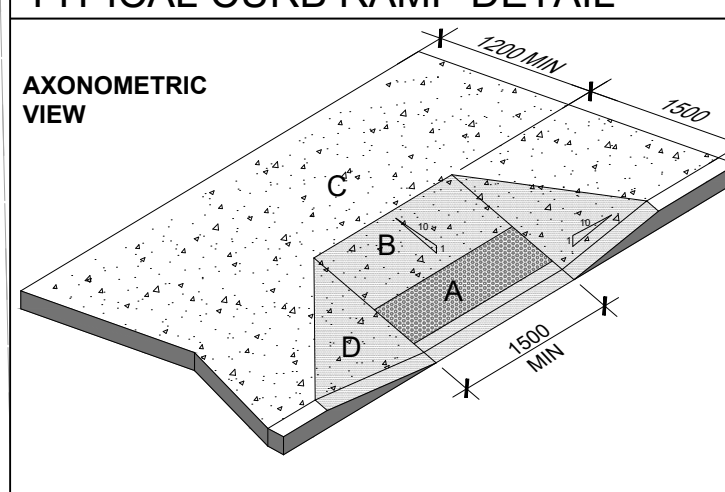


**SURVEY LEGEND**

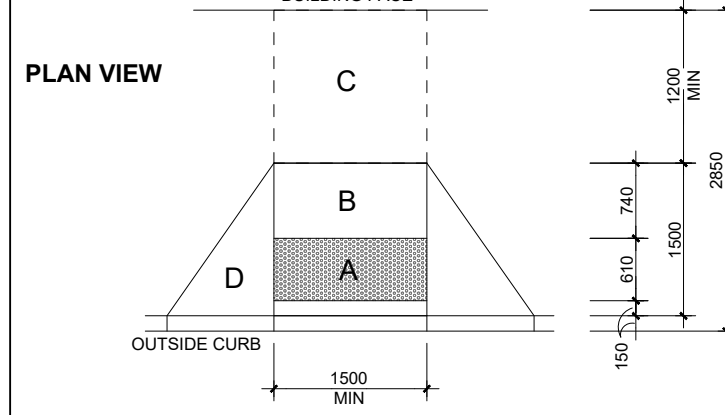
BXB	DENOTES BELL BOX	-X-	DENOTES FENCE LINE	INV.	DENOTES INVERT ELEVATION
CB	DENOTES CATCH BASIN	○	DENOTES FENCE LINE	OBV.	DENOTES OBVERT ELEVATION
P.I.N.	DENOTES PROPERTY IDENTIFIER NUMBER	PC	DENOTES CONCRETE		
M/W	DENOTES MONITORING WELL	SW	DENOTES SIDEWALK		
MH	DENOTES MANHOLE	LS	DENOTES LANDSCAPE		
MHSA	DENOTES MANHOLE SANITARY	LS CONC.	DENOTES CONCRETE LANDSCAPE		
MHST	DENOTES MANHOLE STORM	LS	DENOTES LANDSCAPE STANDARD		
MHW	DENOTES MANHOLE WATER	LS	DENOTES LANDSCAPE STANDARD		
UP	DENOTES UTILITY POLE	HW	DENOTES HANDWELL		
WV	DENOTES WATER VALVE	BXC	DENOTES COMMUNICATION BOX		
-W-	DENOTES OVERHEAD WIRE	BXTC	DENOTES TRAFFIC CONTROL BOX		
		↓	DENOTES GUY WIRE ANCHOR		



**TYPICAL CURB RAMP DETAIL**



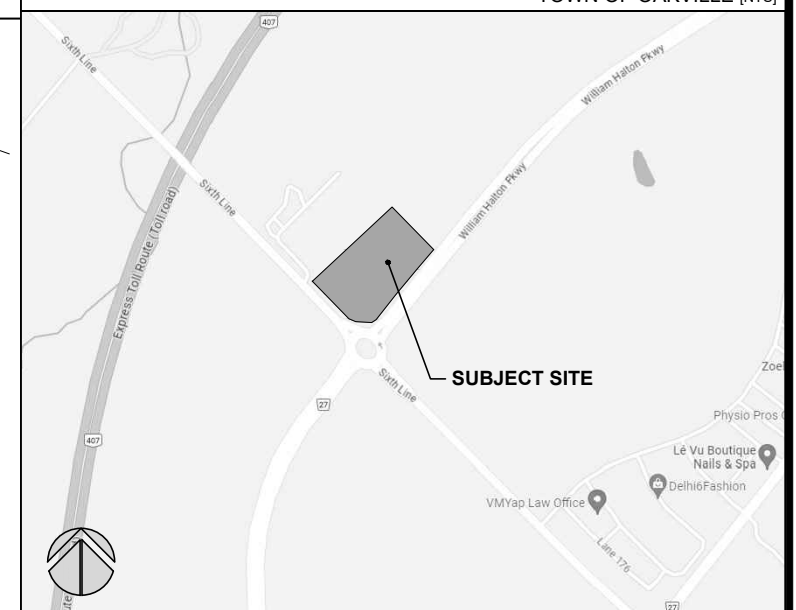
- CURB RAMP MUST HAVE A MINIMUM CLEAR WIDTH OF 1500mm, EXCLUSIVE OF ANY FLARED SIDES.
- THE RUNNING SLOPE OF THE CURB MUST:
  - i. BE A MAX OF 1:8, WHERE ELEVATION IS LESS THAN 75mm, AND
  - ii. BE A MAX OF 1:10, WHERE ELEVATION IS LESS THAN 75mm OR GREATER AND 200mm OR LESS.
- THE MAX SLOPE ON THE FLARED SIDE OF THE CURB RAMP MUST BE NO MORE THAN 1:10.
- CURB RAMP MUST HAVE A TACTILE WALKING SURFACE INDICATOR THAT:
  - HAVE RAISED TACTILE PROFILES COMPOSED OF TRUNCATED DOMES.
  - HAVE A HIGH TONAL CONTRAST WITH THE ADJACENT SURFACE.
  - ARE LOCATED AT THE BOTTOM OF THE CURB RAMP.
  - ARE SET BACK BETWEEN 150mm AND 200mm FROM THE CURB EDGE.
  - EXTEND THE FULL WIDTH OF THE CURB RAMP.
  - ARE A MIN OF 610mm IN DEPTH, AND
  - BE SLIP-RESISTANT.



- A** TACTILE SURFACE / DETECTABLE HAZARD INDICATOR 150mm FROM EDGE OF CURB AND 610mm IN DEPTH
- B** SLOPE SURFACE @ 1:10 (max)
- C** LANDING / UNINTERRUPTED SPACE OF NOT LESS THAN 1100mm
- D** FLARED SIDES WITH MAX SLOPE OF 1:10

THE INFORMATION PROVIDED HERE WAS ASSEMBLED FROM OBC 3.8.3.2. AND O. REG. 19111. INTEGRATED ACCESSIBILITY STANDARDS under the ACCESSIBILITY FOR ONTARIANS WITH DISABILITIES ACT, 2005 updated JUL 2016.

**KEY PLAN**



**LEGAL DESCRIPTION**  
**PROJECT NORTH**  
**TRUE NORTH**

**SITE STATISTICS**

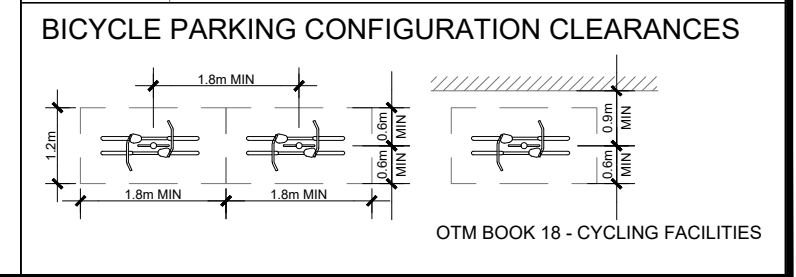
ZONING	REQUIRED	PROVIDED
SITE AREA	22,462.50 m <sup>2</sup>	5.55 Ac
LOT FRONTAGE (SIXTH LINE)	15m MIN	133.13 m
FRONT YARD	3m MIN   24m MAX	19.40 m
INTERIOR SIDE YARD	3.0m	15.99 m
REAR YARD	7.5m	7.50 m
FLANKAGE YARD	3m MIN   24m MAX	22.49 m
BUILDING AREA	8,976.19 m <sup>2</sup>	96,619 SF
GROSS FLOOR AREA	8,976.19 m <sup>2</sup>	96,619 SF
LEASEABLE FLOOR AREA	8,994.79 m <sup>2</sup>	95,743 SF
FLOOR SPACE INDEX	3 MAX	0.4
SITE COVERAGE	UNKNOWN	39.96 %
BUILDING HEIGHT	15 STOREYS	1 STOREY
LANDSCAPED AREA	10 % MIN	15.28%
PAVED AREA	UNKNOWN	44.76%

**PARKING ANALYSIS**

INDUSTRIAL USE ( LIGHT OR GENERAL)	REQUIRED	PROVIDED
LEASEABLE FLOOR AREA OF EACH PREMISES IN EXCESS OF 7,500 m <sup>2</sup>	45 Spaces	124 Spaces
1 PARKING SPACE per 200 m <sup>2</sup> of Leaseable Floor Area MIN.	3 Type A 3 Type B OR 6 Spaces	3 Type A 3 Type B OR 6 Spaces
TOTAL PARKING	2 Spaces MIN	16 Spaces
BARRIER FREE PARKING 151-200 Spaces PROVIDED	3 + 5 Spaces	8 Spaces
LOADING SPACES	2 Spaces MIN	16 Spaces
BICYCLE SPACES 7% of automobile parking spaces + 5 Bicycle Parking Spaces for Visitor	3 + 5 Spaces	12 Spaces

**SYMBOL LEGEND**

▶	MAN DOOR LOCATIONS
▶	PRINCIPAL DOOR LOCATIONS
▶	LOADING DOCK LOCATIONS
▶	DRIVE-IN OR OVERHEAD DOORS
▶	NEW FIRE HYDRANT
▶	CATCH BASIN (REF. CIVIL DWGS)
▶	DOUBLE CATCH BASIN (REF. CIVIL DWGS)
▶	SANITARY MANHOLE (REF. CIVIL DWGS)
▶	CATCH BASIN / MANHOLE (REF. CIVIL DWGS)
▶	STORM MANHOLE (REF. CIVIL DWGS)
▶	HYDRO POLE STANDARD / UTILITY POLE (REF. ELECTRICAL DWGS)
▶	BICYCLE RING: 2 SPACES (REF. DTL BELOW & LANDS DWGS)
▶	DIRECTION OF TRAFFIC FLOW
▶	HYDRO TRANSFORMER ON CONC. PAD (REF. ELECTRICAL DWGS)
▶	GAS METER LOCATIONS
▶	BARRIER FREE PARKING   TYPE 'A' (3.65m WIDE) TYPE 'B' (2.70m WIDE)
▶	LIGHT STANDARD (REF. ELECTRICAL DWGS)
▶	PEDESTRIAN DRIVE AISLE CONNECTIONS: PAINTED LINEWORK
▶	CURB-RAMP WITH TACTILE PLATES
▶	1.2m, 0.2m DIA. CONC. FILLED STEEL BOLLARD
▶	FIRE DEPARTMENT CONNECTION / SIAMSE CONNECTION
▶	BARRIER FREE PARKING SIGNAGE
▶	CARPOOL PARKING SPACE & SIGN
▶	POST MOUNTED FIRE ROUTE SIGN
▶	POST MOUNTED STOP SIGN
▶	PAINTED STOP BAR & SIGNAGE PLAN BY LEA CONSULTING LTD.
▶	MECH. MECHANICAL ROOM (WHERE REQUIRED)
▶	ELEC. ELECTRICAL ROOM
▶	GARB. INTERNAL REFUSE STORAGE
▶	LOADING SPACE (8.0m x 3.7m x 4.2m Clear Height)
▶	HIGH EFFICIENCY VEHICLE CHARGING STATION
▶	HIGH EFFICIENCY VEHICLE PARKING SIGN & SPACE
▶	POST MOUNTED SIGNAGE & SIGNAGE PLAN BY LEA CONSULTING LTD.
▶	SNOW STORAGE AREAS (REF. LANDS DWGS)
▶	BOUNDARY / PROPERTY LINE
▶	SHARED COMMUNITY MAILBOX - CPC-4 MODULE
▶	POST MOUNTED PEDESTRIAN CROSSING SIGNS
▶	POST MOUNTED SIGNAGE & SIGNAGE PLAN BY LEA CONSULTING LTD.



No.	ISSUED	DATE
1	ISSUED FOR SITE PLAN PRE-CONSULTATION	JAN. 31, 2024
2	ISSUED FOR SITE PLAN REVIEW 1ST SUBMISSION	JULY 16, 2024

No.	REVISION	DATE
-----	----------	------

**BALDASSARRA**  
 Architects Inc.  
 30 Great Gulf Drive, Unit 20 | Concord ON | L4K 0K7  
 T. 905.660.0722 | www.baldassarra.ca  
 OWNERS INFORMATION:  
 TAFIA DEVELOPMENT CORP.



**SIXTH LINE & WILLIAM HALTON PKWY**  
 15 WILLIAM HALTON PARKWAY EAST  
 OAKVILLE, ON

**SITE PLAN**

DATE: OCT. 2023  
 DRAWN BY: DW  
 CHECKED: SCALE: 1:400  
 PROJECT No. 24-06  
 DRAWING No. A-1.0