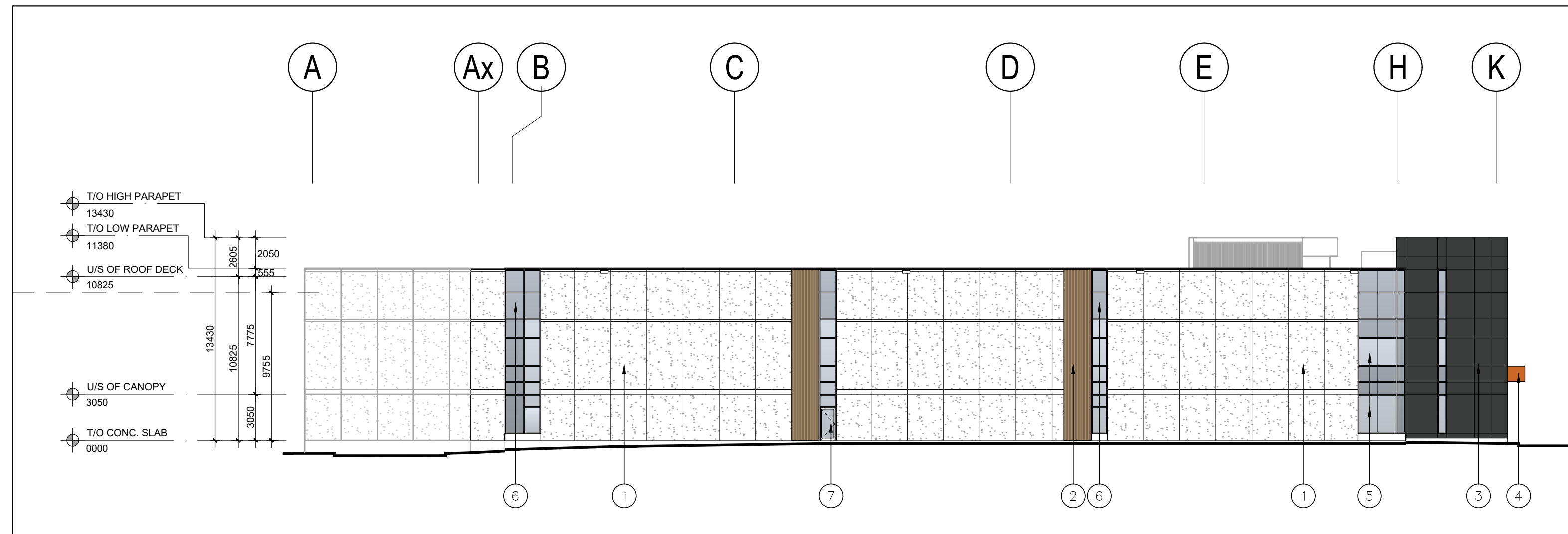
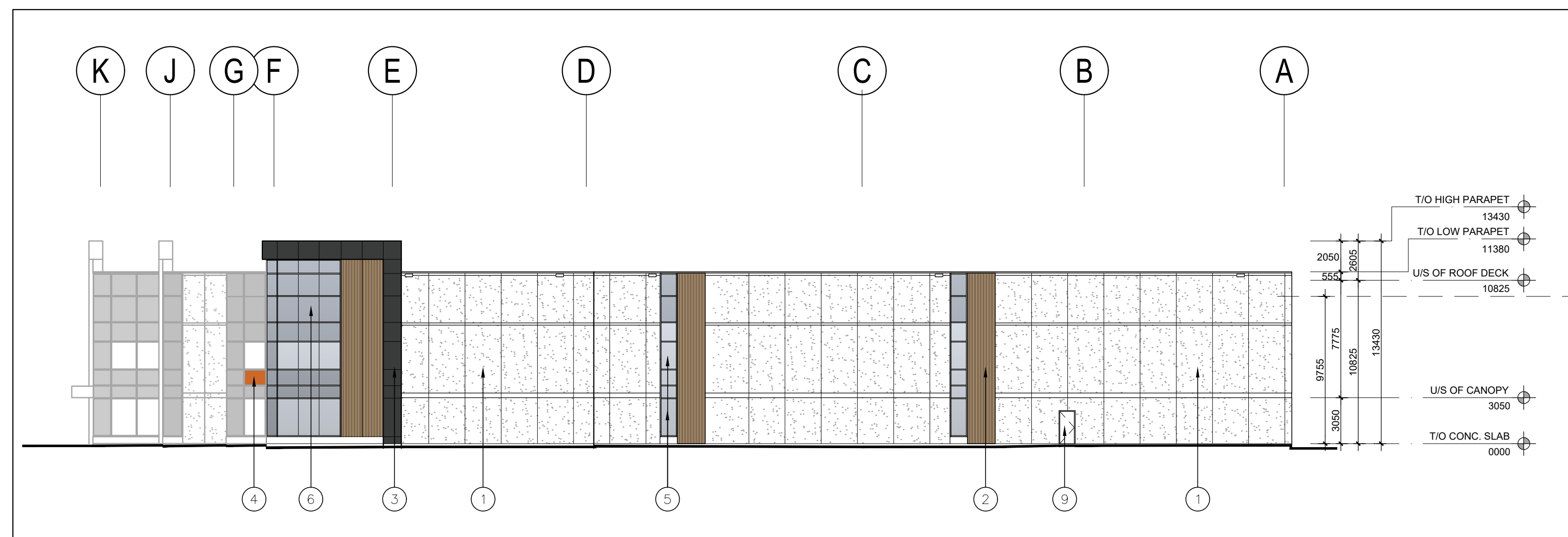


1 SOUTH ELEVATION  
A-3.0 1:250



2 WEST ELEVATION  
A-3.0 1:250



3 EAST ELEVATION  
A-3.0 1:250

MATERIAL LEGEND

- 1 INSUL. PRECAST CONC. PANELS | COLOUR: EXPOSED AGGREGATE WHITE
- 2 LONG BOARD SIDING (VERTICAL) OR APPROVED EQUAL. COLOUR TO BE TABLE WALNUT. SAMPLE TO BE SUBMITTED FOR ARCHITECTS APPROVAL.
- 3 ALUMINUM COMPOSITE METAL PANELS | COLOUR: CHARCOAL
- 4 ALUMINUM COMPOSITE METAL PANELS | COLOUR: COPPER
- 5 THERMAL DOUBLE GLAZING VISION GLASS IN ALUMINIUM CURTAIN WALL FRAMES. COLOUR OF FRAMES: CLEAR ANODIZED
- 6 LOW REFLECTIVE SPANDREL GLAZING IN ALUMINIUM CURTAIN WALL FRAMES. COLOUR OF SPANDREL: GREY | COLOUR OF FRAMES: CLEAR ANODIZED
- 7 ALUMINUM & TEMPERED THERMAL GLASS DOOR(S) IN ALUMINIUM CURTAIN WALL DOOR FRAMING SYSTEM. GLASS TO BE CLEAR. ALUMINIUM COLOUR TO MATCH WINDOW GLAZING SYSTEM ALUMINIUM COLOUR.
- 8 ALUMINUM & SPANDREL GLASS DOOR(S) IN ALUMINIUM CURTAIN WALL DOOR FRAMING SYSTEM. ALUMINIUM COLOUR TO MATCH WINDOW GLAZING SYSTEM ALUMINIUM COLOUR. SPANDREL GLASS TO HAVE ALUMINIUM BACKPAN.
- 9 INSULATED HOLLOW METAL DOOR IN PRESSED STEEL THERMAL FRAME. DOOR & FRAME PAINTED TO MATCH ADJACENT WALL COLOUR.
- 10 INSULATED HOLLOW METAL OVERHEAD DOOR C/W TEMPERED GLASS VIEW WINDOW. COLOUR TO BE GREY TO MATCH INSULATED METAL PANELS C/W DOCK SEAL, DOCK LEVELLER & DOCK BUMPERS. (2745 W X 3050 H)
- 11 INSULATED HOLLOW METAL OVERHEAD DOOR C/W TEMPERED GLASS VIEW WINDOW. COLOUR TO BE GREY TO MATCH INSULATED METAL PANELS.
  - A) 4270 W X 4875 H
  - B) 3050 W X 4270 H
  - C) 2440 W X 2440 H
- 12 GALVANIZED MISC METAL STAIR

D:\3006 - Sixth Line - William Halton Drawings\30 - Current Drawings\3006 - A-3.0.dwg

No.	ISSUED	DATE
1	ISSUED FOR SITE PLAN PRE-CONSULTATION	JAN. 31, 2024
2	ISSUED FOR SITE PLAN REVIEW 1ST SUBMISSION	JULY 16, 2024

No.	REVISION	DATE

**BALDASSARRA**  
Architects Inc.

30 Great Gulf Drive, Unit 20 | Concord ON | L4K 0K7  
T. 905.660.0722 | www.baldassarra.ca

OWNERS INFORMATION:



SIXTH LINE &  
WILLIAM HALTON PKWY

6TH LINE & WILLIAM HALTON PKWY, BLOCK 7  
OAKVILLE

ELEVATIONS

DATE:	DRAWN BY:	CHECKED:	SCALE:
OCT. 2023	DW/MM		1:250

PROJECT No.      DRAWING No.

24-06

A-3.0