


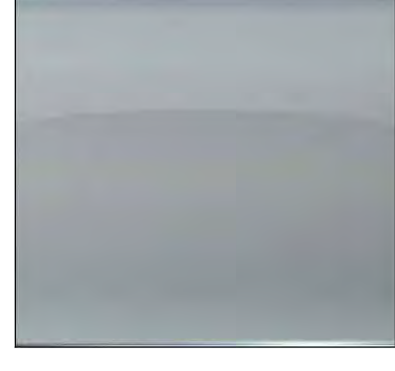
MATERIAL LEGEND

- 1

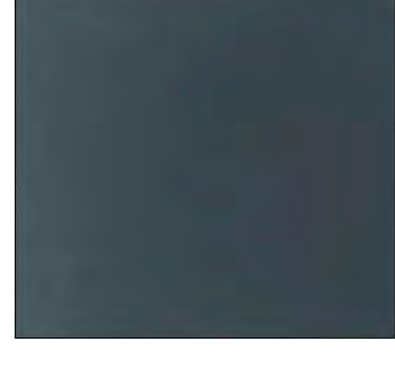
VISION GLASS
 MANUFACTURER: TBD
 DESCRIPTION: CLEAR


- 2


SPANDREL PANEL
 MANUFACTURER: TBD
 DESCRIPTION: LIGHT GREY


- 3


LOUVERS & MULLIONS
 MANUFACTURER: TBD
 DESCRIPTION: CHARCOAL GREY


- 4


METAL PANEL
 MANUFACTURER: TBD
 DESCRIPTION: WHITE


- 5


RAILING GLASS
 MANUFACTURER: TBD
 DESCRIPTION: CLEAR


- 6

BRICK
 MANUFACTURER: TBD
 DESCRIPTION: BROWN


- 7

STUCCO
 MANUFACTURER: TBD
 DESCRIPTION: WHITE



This drawing, as an instrument of service, is provided by and is the property of Graziani + Corazza Architects Inc. The contractor must verify and accept responsibility for all dimensions and conditions on site and must notify Graziani + Corazza Architects Inc. of any variations from the supplied information. Graziani + Corazza Architects Inc. is not responsible for the accuracy of survey, structural, mechanical, electrical, etc., engineering information shown on this drawing. Refer to the appropriate engineering drawings before proceeding with the work. Construction must conform to all applicable codes and requirements of the authorities having jurisdiction. Unless otherwise noted, no investigation has been undertaken or reported on by this office in regards to the environmental condition of this site.

This drawing is not to be scaled. All architectural symbols indicated on this drawing are graphic representations only.

Conditions for electronic information transfer

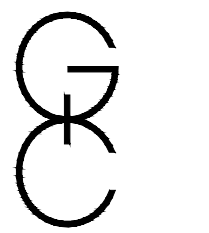
Electronic information is supplied to other associated firms to assist them in the execution of their work/revise. The recipient firms must determine the completeness/appropriateness/relevance of the information in respect to their particular responsibility.

Graziani + Corazza Architects Inc. shall not be responsible for:

- Errors, omissions, incompleteness due to loss of information in whole or part when information is transferred.
- Transmission of any virus or damage to the receiving electronic system when information is transferred.

1.	NOV.02.2022	ISSUED FOR SPA	J. CHL
2.	JULY.07.2023	ISSUED FOR SPA	J. CHL
3.	OCT.19.2023	ISSUED FOR SPA	J. CHL
4.	MAR.01.2024	ISSUED FOR SPA	J. CHL
5.	SEPT.30.2024	ISSUED FOR SPA	J. CHL

issued for revisions



ONTARIO ASSOCIATION
OF ARCHITECTS

JOHNNY CHIMIENTI
LICENCE
6299

GRAZIANI + CORAZZA ARCHITECTS INC.

8400 JANE ST. BUILDING D SUITE 300 CONCORD, ONTARIO L4K 4L8
 T.905.795.2601 F.905.795.2844 WWW.GC-ARCHITECTS.COM

PROPOSED DEVELOPMENT

455-465 DUNDAS STREET WEST

RIONE DEVELOPMENT CORP. ONTARIO

OAKVILLE ONTARIO

Project Architect: J. Chimienti
 Assistant Designer: A. Hassan / B. Dadgostar
 Drawn By: B. Dadgostar
 Checked By: D. Biase
 Plot Date: **SEP. 30. 2024**
 Job #: 1944.21

This drawing, as an instrument of service, is provided by and is the property of Graziani + Corazza Architects Inc. The contractor must verify and accept responsibility for all dimensions and conditions on site and must notify Graziani + Corazza Architects Inc. of any variations from the supplied information. Graziani + Corazza Architects Inc. is not responsible for the accuracy of survey, structural, mechanical, electrical, etc., engineering information shown on this drawing. Refer to the appropriate engineering drawings before proceeding with the work. Construction must conform to all applicable codes and requirements of the authorities having jurisdiction. Unless otherwise noted, no investigation has been undertaken or reported on by this office in regards to the environmental condition of this site.

This drawing is not to be scaled. All architectural symbols indicated on this drawing are graphic representations only.

Conditions for electronic information transfer

Electronic information is supplied to the other associated firms to assist them in the execution of their work/review. The recipient firms must determine the completeness/appropriateness/relevance of the information in respect to their particular responsibility.

Graziani + Corazza Architects Inc. shall not be responsible for:

1. Errors, omissions, incompleteness due to loss of information in whole or part when information is transferred.
2. Transmission of any virus or damage to the receiving electronic system when information is transferred.

1. NOV.02.2022 ISSUED FOR SPA J. CHL
2. JULY.07.2023 ISSUED FOR SPA J. CHL
3. OCT.19.2023 ISSUED FOR SPA J. CHL
4. MAR.01.2024 ISSUED FOR SPA J. CHL
5. SEPT.30.2024 ISSUED FOR SPA J. CHL



SOUTH ELEVATION

BIRD FRIENDLY TREATMENT

LOW REFLECTANCE OPACQUE MATERIALS

STUCCO MARKERS APPLIED TO GLASS WITH A MAXIMUM SPACING OF 100MM x 100MM.

BUILDING INTEGRATED STRUCTURES TO MUTE REFLECTIONS ON GLASS SURFACES

MATERIAL LEGEND

1	VISION GLASS MANUFACTURER: TBD DESCRIPTION: CLEAR	
2	SPANDREL PANEL MANUFACTURER: TBD DESCRIPTION: LIGHT GREY	
3	LOUVERS & MULLIONS MANUFACTURER: TBD DESCRIPTION: CHARCOAL GREY	
4	METAL PANEL MANUFACTURER: TBD DESCRIPTION: WHITE	
5	RAILING GLASS MANUFACTURER: TBD DESCRIPTION: CLEAR	
6	BRICK MANUFACTURER: TBD DESCRIPTION: BROWN	
7	STUCCO MANUFACTURER: TBD DESCRIPTION: WHITE	

issued for revisions

GRAZIANI + CORAZZA ARCHITECTS INC.
JOHNNY CHIMIENTI LICENCE 6299

8400 JANE ST. BUILDING D SUITE 300 CONCORD, ONTARIO L4K 4L8
T.905.795.2601 F.905.795.2844 WWW.GC-ARCHITECTS.COM

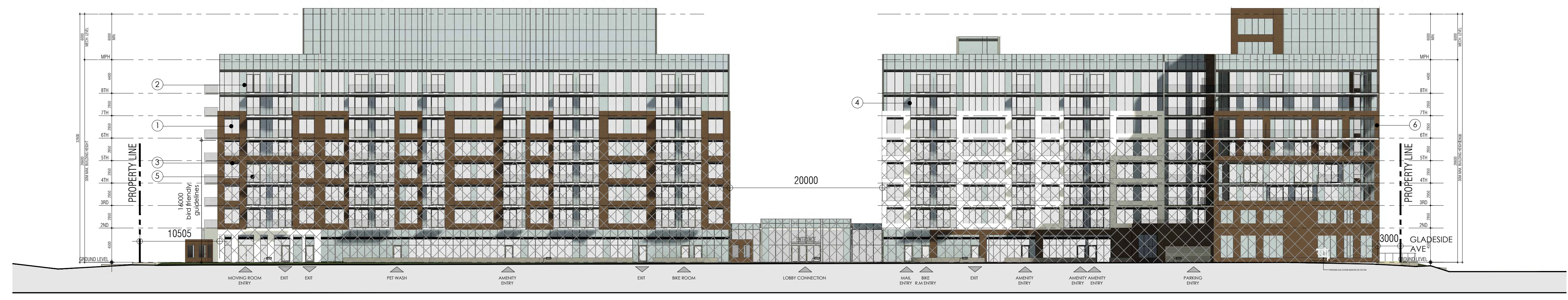
PROPOSED DEVELOPMENT

455-465 DUNDAS STREET WEST

RIONE DEVELOPMENT CORP. ONTARIO

Project Architect: J. Chimienti
Assistant Designer: A. Hassan / B. Dodgostar
Drawn By: B. Dodgostar
Checked By: D. Biase
Plot Date: SEP.30.2024
Job #: 1944.21

NORTH & SOUTH ELEVATIONS



NORTH ELEVATION

1:300 A401

TITLEBLOCK SIZE: 610 x 900

This drawing, as an instrument of service, is provided by and is the property of Graziani + Corazza Architects Inc. The contractor must verify and accept responsibility for all dimensions and conditions on site and must notify Graziani + Corazza Architects Inc. of any variations from the supplied information. Graziani + Corazza Architects Inc. is not responsible for the accuracy of survey, structural, mechanical, electrical, etc., engineering information shown on this drawing. Refer to the appropriate engineering drawings before proceeding with the work. Construction must conform to all applicable codes and requirements of the authorities having jurisdiction. Unless otherwise noted, no investigation has been undertaken or reported on by this office in regards to the environmental condition of this site.

This drawing is not to be scaled. All architectural symbols indicated on this drawing are graphic representations only.

Conditions for electronic information transfer

Electronic information is supplied to the other associated firms to assist them in the execution of their work/review. The recipient firms must determine the completeness/appropriateness/relevance of the information in respect to their particular responsibility.

Graziani + Corazza Architects Inc. shall not be responsible for:

- Errors, omissions, incompleteness due to loss of information in whole or part when information is transferred.
- Transmission of any virus or damage to the receiving electronic system when information is transferred.

- NOV.02.2022 ISSUED FOR SPA J. CHL
- JULY.07.2023 ISSUED FOR SPA J. CHL
- OCT.19.2023 ISSUED FOR SPA J. CHL
- MAR.01.2024 ISSUED FOR SPA J. CHL
- SEPT.30.2024 ISSUED FOR SPA J. CHL

BIRD FRIENDLY TREATMENT

- LOW REFLECTANCE OPACQUE MATERIALS
- STUCCO MARKERS APPLIED TO GLASS WITH A MAXIMUM SPACING OF 100MM x 100MM
- BUILDING INTEGRATED STRUCTURES TO MUTE REFLECTIONS ON GLASS SURFACES

MATERIAL LEGEND

1	VISION GLASS MANUFACTURER: TBD DESCRIPTION: CLEAR	
2	SPANDREL PANEL MANUFACTURER: TBD DESCRIPTION: LIGHT GREY	
3	LOUVERS & MULLIONS MANUFACTURER: TBD DESCRIPTION: CHARCOAL GREY	
4	METAL PANEL MANUFACTURER: TBD DESCRIPTION: WHITE	
5	RAILING GLASS MANUFACTURER: TBD DESCRIPTION: CLEAR	
6	BRICK MANUFACTURER: TBD DESCRIPTION: BROWN	
7	STUCCO MANUFACTURER: TBD DESCRIPTION: WHITE	

issued for revisions

GRAZIANI + CORAZZA ARCHITECTS INC.

JOHNNY CHIMIENTI LICENCE 6299

8400 JANE ST. BUILDING G SUITE 300 CONCORD, ONTARIO L4K 4L8
T.905.795.2601 F.905.795.2844 WWW.GC-ARCHITECTS.COM

PROPOSED DEVELOPMENT

455-465 DUNDAS STREET WEST

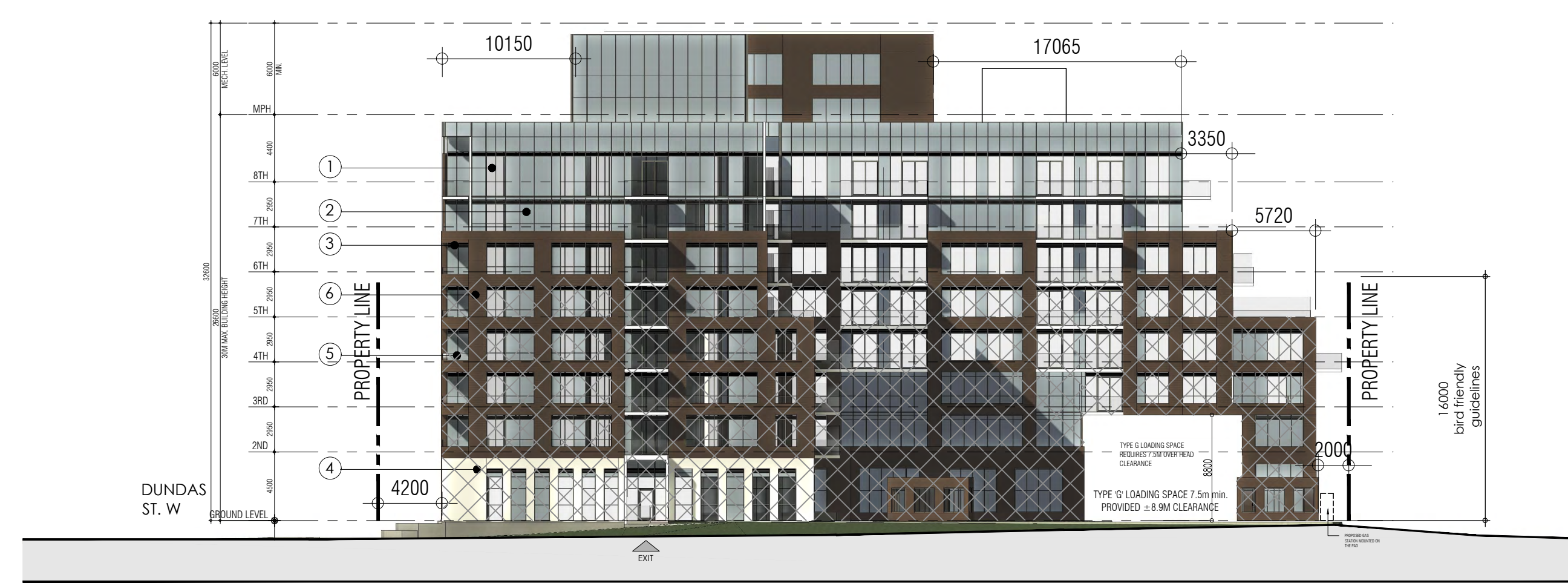
RIONE DEVELOPMENT CORP. ONTARIO

Project Architect: J. Chimenti
Assistant Designer: A. Hassan / B. Dadgostar
Drawn By: B. Dadgostar
Checked By: D. Biase
Plot Date: SEP.30.2024
Job #: 1944.21

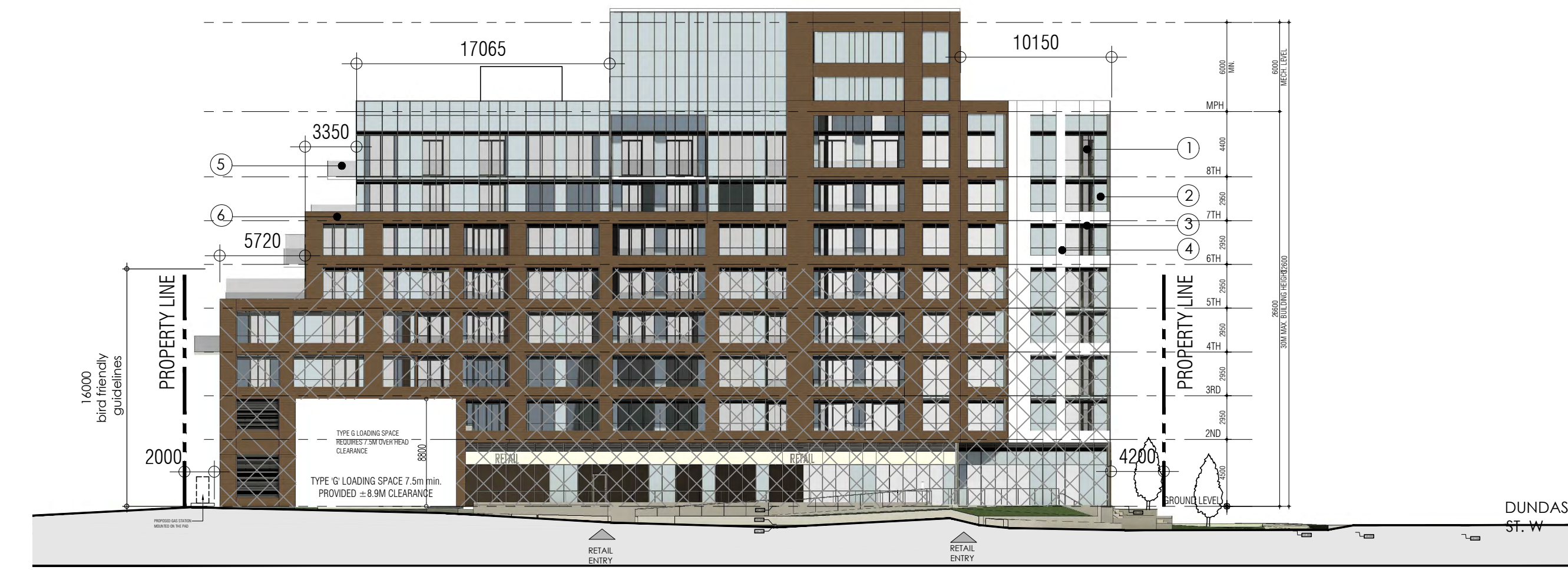
WEST & EAST ELEVATIONS

1:300 A402

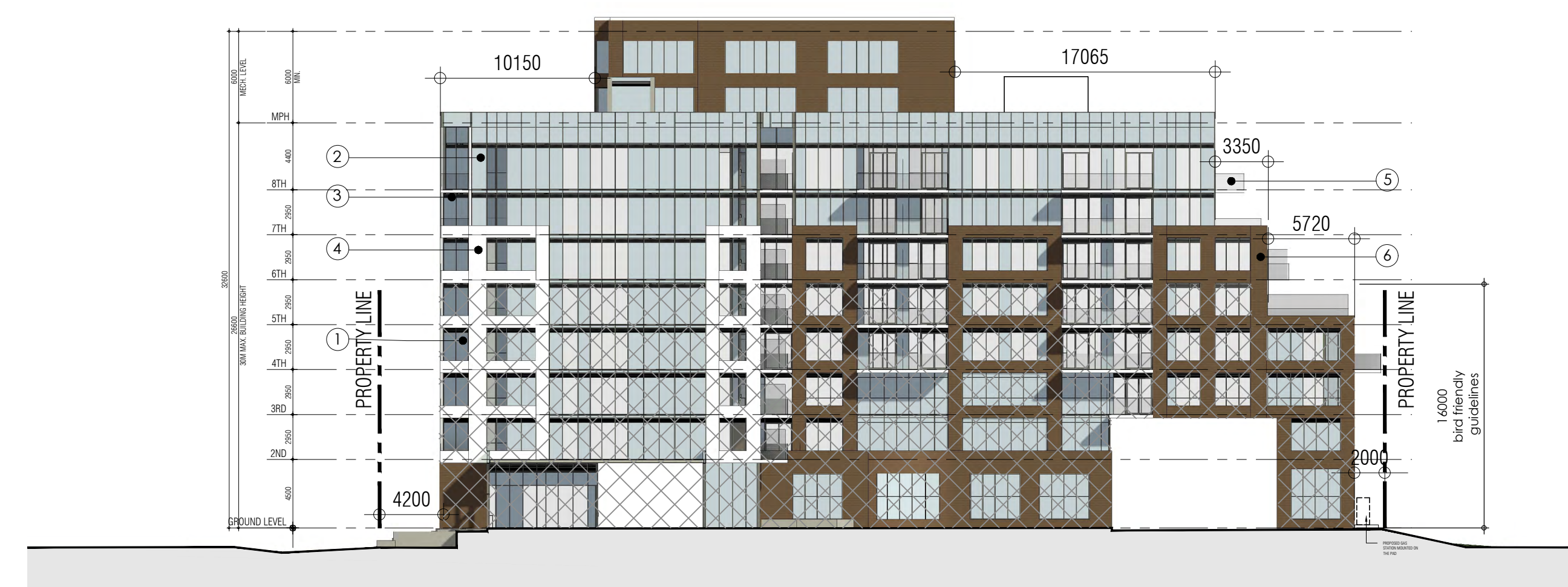
TITLEBLOCK SIZE: 610 x 900



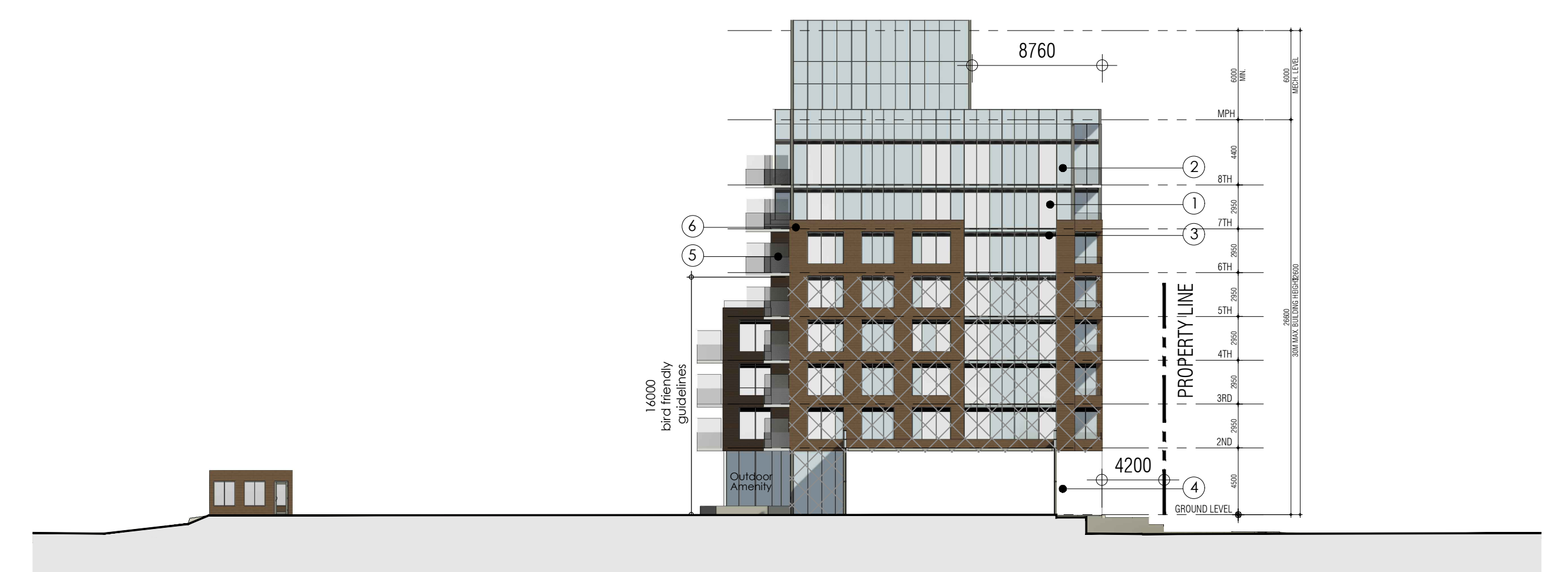
EAST ELEVATION



WEST ELEVATION



EAST ELEVATION - BUILDING A



WEST ELEVATION - BUILDING B

This drawing, as an instrument of service, is provided by and is the property of Graziani + Corazza Architects Inc. The contractor must verify and accept responsibility for all dimensions and conditions on site and must notify Graziani + Corazza Architects Inc. of any variations from the supplied information. Graziani + Corazza Architects Inc. is not responsible for the accuracy of survey, structural, mechanical, electrical, etc., engineering information shown on this drawing. Refer to the appropriate engineering drawings before proceeding with the work. Construction must conform to all applicable codes and requirements of the authorities having jurisdiction. Unless otherwise noted, no investigation has been undertaken or reported on by this office in regards to the environmental condition of this site.

This drawing is not to be scaled. All architectural symbols indicated on this drawing are graphic representations only.

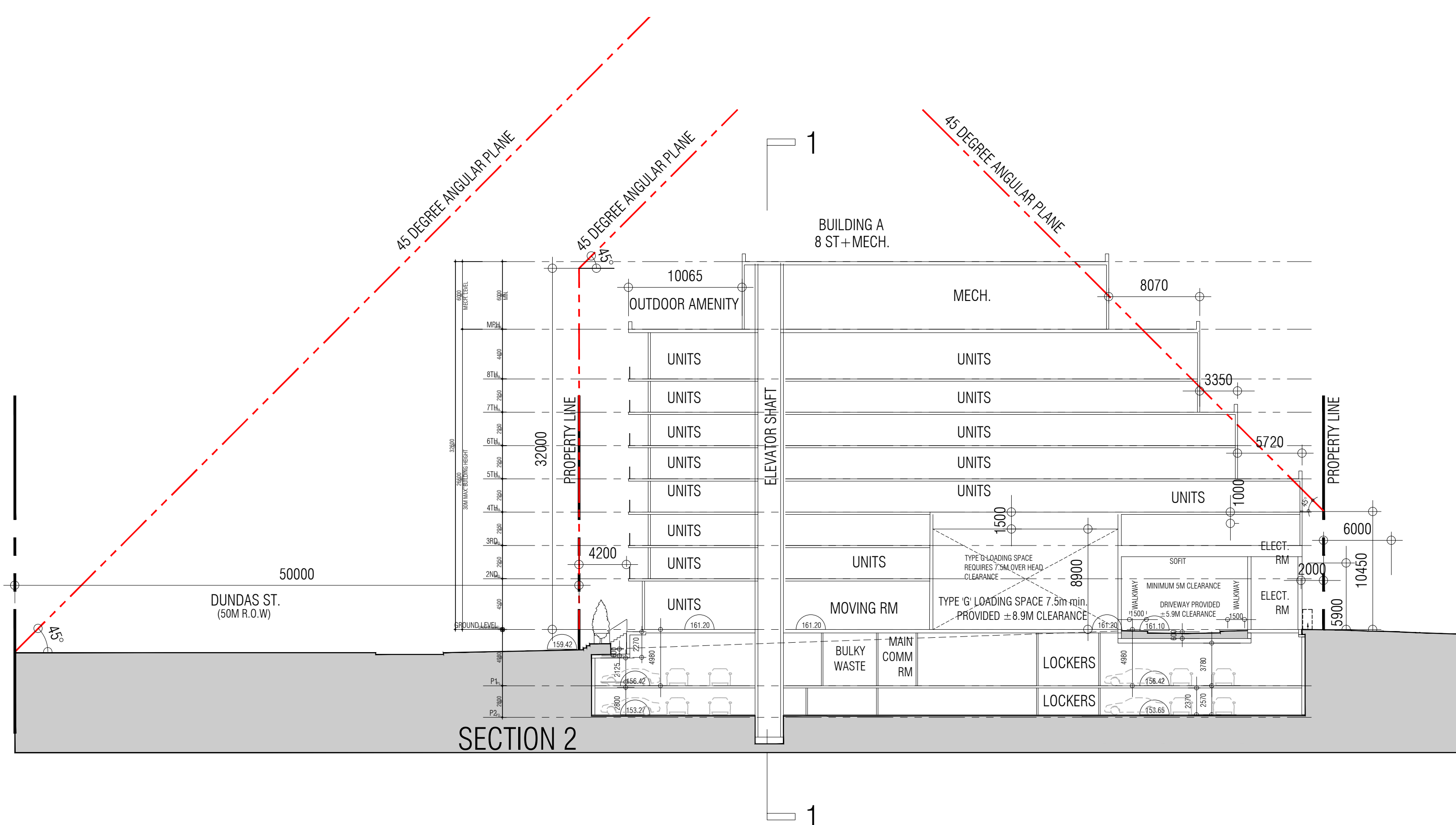
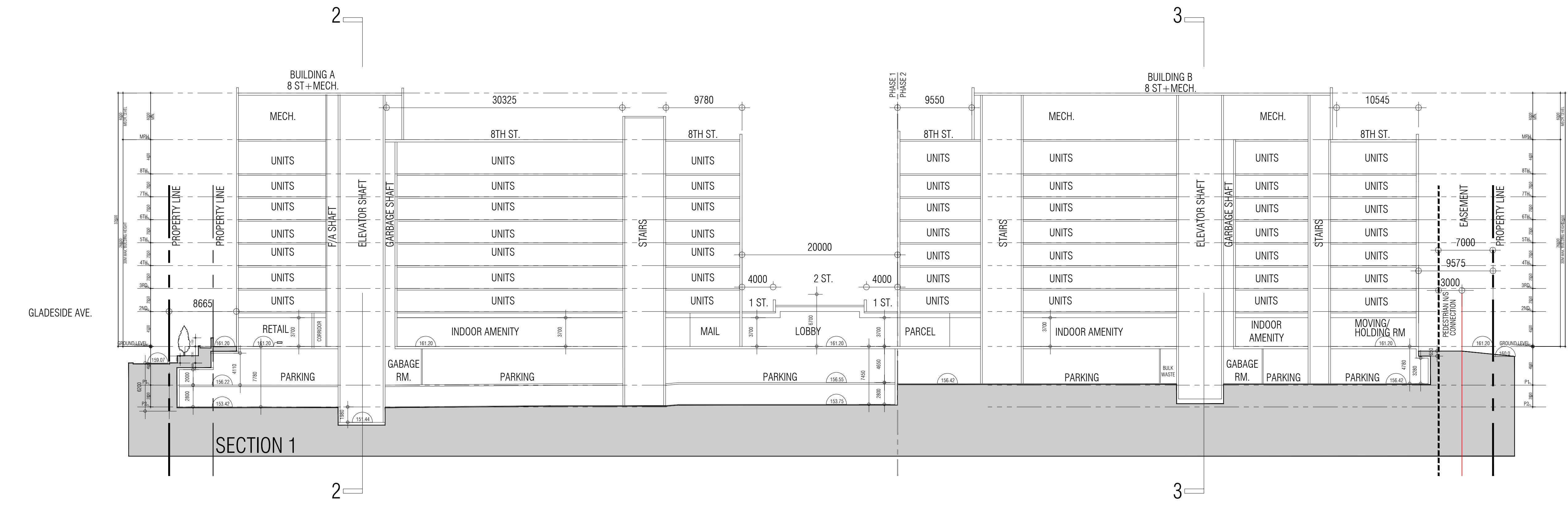
Conditions for electronic information transfer

Electronic information is supplied to the other associated firms to assist them in the execution of their work/review. The recipient firms must determine the completeness/appropriateness/relevance of the information in respect to their particular responsibility.

Graziani + Corazza Architects Inc. shall not be responsible for:

- Errors, omissions, incompleteness due to loss of information in whole or part when information is transferred.
- Transmission of any virus or damage to the receiving electronic system when information is transferred.

- NOV.02.2022 ISSUED FOR SPA J. CHL
- JULY.07.2023 ISSUED FOR SPA J. CHL
- OCT.19.2023 ISSUED FOR SPA J. CHL
- MAR.01.2024 ISSUED FOR SPA J. CHL
- SEPT.30.2024 ISSUED FOR SPA J. CHL



issued for revisions

GRAZIANI + CORAZZA ARCHITECTS INC.

JOHNNY CHIMENTI
LICENCE 6299

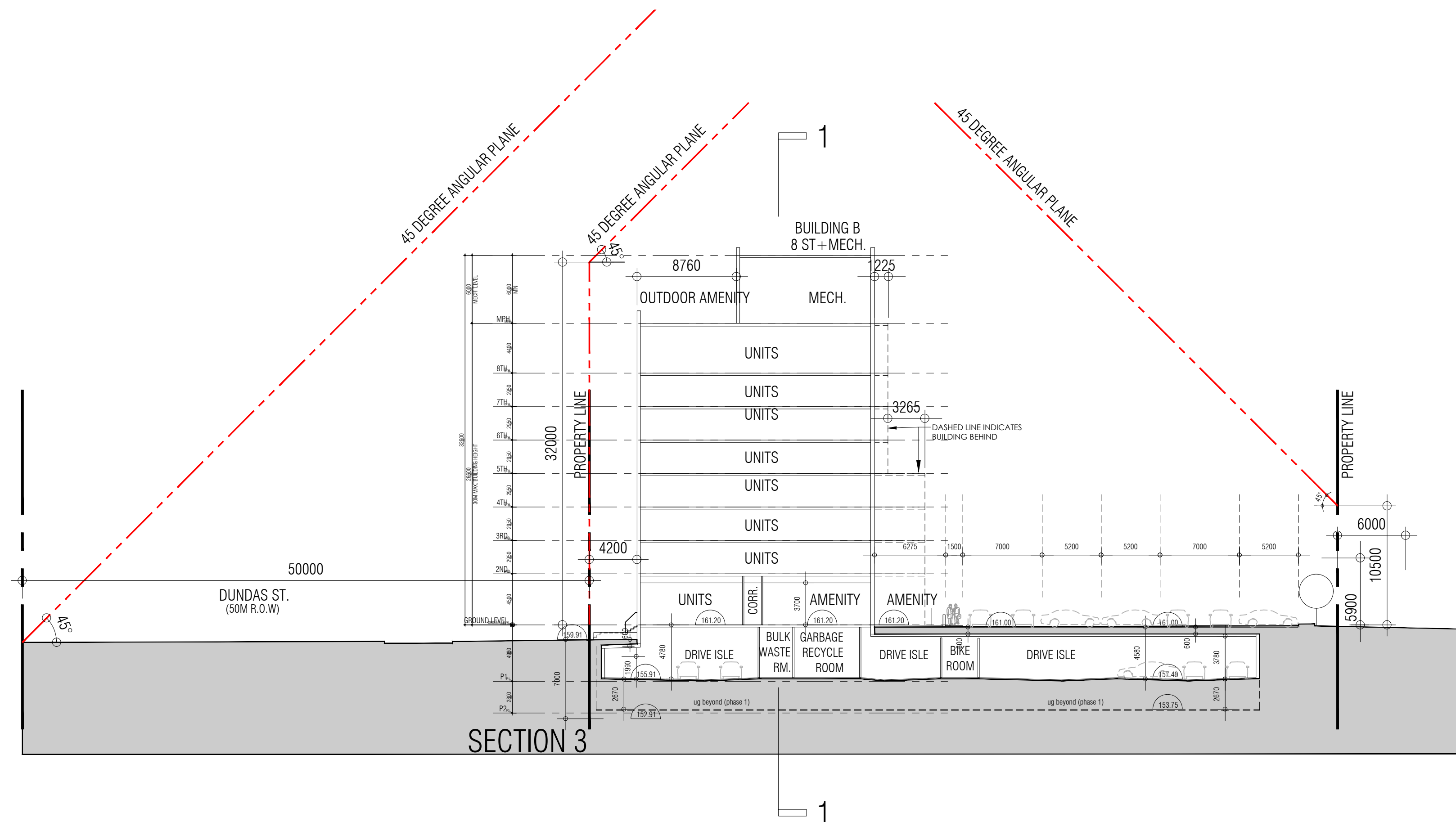
8400 JANE ST. BUILDING D SUITE 300 CONCORD, ONTARIO L4K 4L8
T.905.795.2844 F.905.795.2844 WWW.GC-ARCHITECTS.COM

PROPOSED DEVELOPMENT

455-465 DUNDAS STREET WEST

RIONE DEVELOPMENT CORP. ONTARIO

Project Architect: J. Chimenti
Assistant Designer: A. Hassan / B. Dadgostar
Drawn By: B. Dadgostar
Checked By: D. Biase
Plot Date: **SEP. 30. 2024**
Job #: 1944.21



This drawing, as an instrument of service, is provided by and is the property of Graziani + Corazza Architects Inc. The contractor must verify and accept responsibility for all dimensions and conditions on site and must notify Graziani + Corazza Architects Inc. of any variations from the supplied information. Graziani + Corazza Architects Inc. is not responsible for the accuracy of survey, structural, mechanical, electrical, etc., engineering information shown on this drawing. Refer to the appropriate engineering drawings before proceeding with the work. Construction must conform to all applicable codes and requirements of the authorities having jurisdiction. Unless otherwise noted, no investigation has been undertaken or reported on by this office in regards to the environmental condition of this site.

This drawing is not to be scaled. All architectural symbols indicated on this drawing are graphic representations only.

Conditions for electronic information transfer

Electronic information is supplied to the other associated firms to assist them in the execution of their work/review. The recipient firms must determine the completeness/appropriateness/relevance of the information in respect to their particular responsibility.

Graziani + Corazza Architects Inc. shall not be responsible for:

- Errors, omissions, incompleteness due to loss of information in whole or part when information is transferred.
- Transmission of any virus or damage to the receiving electronic system when information is transferred.

1.	NOV.02.2022	ISSUED FOR SPA	J. CHL
2.	JULY.07.2023	ISSUED FOR SPA	J. CHL
3.	OCT.19.2023	ISSUED FOR SPA	J. CHL
4.	MAR.01.2024	ISSUED FOR SPA	J. CHL
5.	SEPT.30.2024	ISSUED FOR SPA	J. CHL

issued for revisions

GRAZIANI + CORAZZA ARCHITECTS INC.

JOHNNY CHIMIENTI
LICENCE
6299

8400 JANE ST. BUILDING D SUITE 300 CONCORD, ONTARIO L4K 4L8
T.905.795.2601 F.905.795.2844 WWW.GC-ARCHITECTS.COM

PROPOSED DEVELOPMENT

455-465 DUNDAS STREET WEST

RIONE DEVELOPMENT CORP.	
OAKVILLE	ONTARIO
Project Architect:	J. Chimienti
Assistant Designer:	A. Hassan / B. Dadgostar
Drawn By:	B. Dadgostar
Checked By:	D. Biase
Plot Date:	SEP. 30. 2024
Job #	1944.21

SECTION 3

1:300 **A502**



AERIAL VIEW LOOKING NORTH EAST



AERIAL VIEW LOOKING NORTH WEST



AERIAL VIEW LOOKING SOUTH EAST



AERIAL VIEW LOOKING SOUTH WEST

This drawing, as an instrument of service, is provided by and is the property of Graziani + Corazza Architects Inc. The contractor must verify and accept responsibility for all dimensions and conditions on site and must notify Graziani + Corazza Architects Inc. of any variations from the supplied information. Graziani + Corazza Architects Inc. is not responsible for the accuracy of survey, structural, mechanical, electrical, etc., engineering information shown on this drawing. Refer to the appropriate engineering drawings before proceeding with the work. Construction must conform to all applicable codes and requirements of the authorities having jurisdiction. Unless otherwise noted, no investigation has been undertaken or reported on by this office in regards to the environmental condition of this site.

This drawing is not to be scaled. All architectural symbols indicated on this drawing are graphic representations only.

Conditions for electronic information transfer

Electronic information is supplied to the other associated firms to assist them in the execution of their work/phase. The recipient firms must determine the completeness/appropriateness/relevance of the information in respect to their particular responsibility.

Graziani + Corazza Architects Inc. shall not be responsible for:

1. Errors, omissions, incompleteness due to loss of information in whole or part when information is transferred.
2. Transmission of any virus or damage to the receiving electronic system when information is transferred.

1.	NOV.02.2022	ISSUED FOR SPA	J. CHL
2.	JULY.07.2023	ISSUED FOR SPA	J. CHL
3.	OCT.19.2023	ISSUED FOR SPA	J. CHL
4.	MAR.01.2024	ISSUED FOR SPA	J. CHL
5.	SEPT.30.2024	ISSUED FOR SPA	J. CHL

issued for revisions

GRAZIANI + CORAZZA ARCHITECTS INC.

JOHNNY CHIMIENTI
LICENCE 6299

8400 JANE ST. BUILDING D SUITE 300 CONCORD, ONTARIO L4K 4L8
T.905.795.2801 F.905.795.2844 WWW.GC-ARCHITECTS.COM

PROPOSED DEVELOPMENT

455-465 DUNDAS STREET WEST

RIONE DEVELOPMENT CORP. ONTARIO

OAKVILLE ONTARIO

Project Architect: J. Chimienti
Assistant Designer: A. Hassan / B. Dadgostar
Drawn By: B. Dadgostar
Checked By: D. Biase
Plot Date: **SEP. 30. 2024**
Job #: 1944.21

AERIAL VIEWS

N.T.S. **A601**