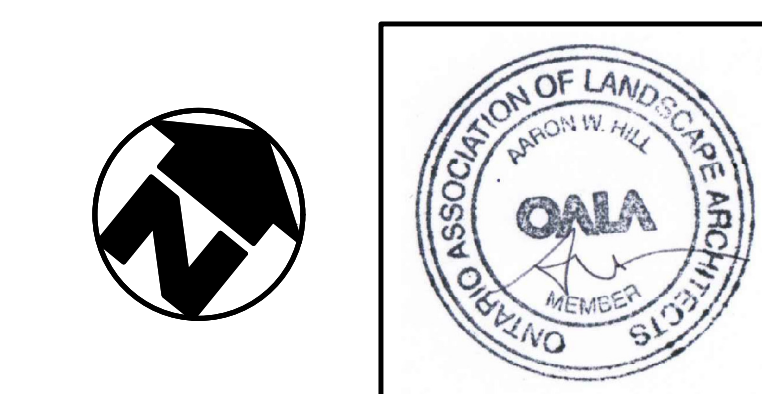


GENERAL NOTES

1. ALL WORKMANSHIP WILL BE TO THE STANDARDS OF LANDSCAPE ONTARIO.
2. ALL PLANT MATERIAL TO BE NO.1 GRADE NURSERY GROWN IN ACCORDANCE WITH THE CANADIAN STANDARDS FOR NURSERY STOCK, 8TH EDITION, 2017, BY THE CANADIAN NURSERY TRADES ASSOCIATION.
3. BACKFILL WILL CONSIST OF SOIL NATIVE TO THE SITE OR GENERAL SOIL TYPE/CLASS NATIVE TO THE SITE. TOPSOIL TO BE TESTED FOR NUTRIENT VALUE, AND AMENDED FOR OPTIMAL GROWTH AS PER THE RECOMMENDATIONS OF THE SOIL TEST.
4. CONTRACTOR SHALL MAINTAIN ALL LANDSCAPE AREAS UNTIL OWNER'S ACCEPTANCE OF PROJECT.
5. CONTRACTOR TO LOCATE ALL UNDERGROUND UTILITIES.
6. PLANTING MAY BE ADJUSTED TO SUIT LOCATIONS OF SITE UTILITY STRUCTURES/SERVICES.
7. ALL MATERIALS MUST BE APPROVED BY LANDSCAPE ARCHITECT PRIOR TO INSTALLATION.
8. SPREAD MULCH TO A MINIMUM OF 100mm COMPACTED DEPTH ON ALL TREE PITS AND PLANTING BEDS.
9. CHECK AND VERIFY ALL DIMENSIONS AND QUANTITIES PRIOR TO COMMENCEMENT OF WORK. ANY DISCREPANCIES ARE TO BE REPORTED IN WRITING TO THE LANDSCAPE ARCHITECT. QUANTITIES NOTED WITHIN THE PLAN SUPERCEDE THOSE IN THE PLANT LIST. ANY SUBSTITUTIONS SHALL BE APPROVED BY THE LANDSCAPE ARCHITECT.
10. SOD AS MARKED WITH NURSERY SOD ON A MINIMUM OF 100mm OF CLEAN TOPSOIL. FINE GRADE AND SOD ALL BOULEVARD AREAS TO MUNICIPAL SPECIFICATIONS AND REPAIR DAMAGE TO ADJACENT PROPERTIES, AS REQUIRED.
11. FINAL INSPECTION AND ACCEPTANCE OF PLANTING WORK SHALL COINCIDE WITH THE FINAL INSPECTION AND ACCEPTANCE OF ALL WORK INCLUDED IN THE CONTRACT.
12. ALL SEEDED SLOPES 3:1 AND GREATER TO RECEIVE EROSION CONTROL MATTING. PIN SOD ON ALL SLOPES OF 3:1 OR GREATER.
13. SUBMIT A WRITTEN GUARANTEE TO THE EFFECT THAT ALL PLANTS ACCEPTED DURING THE PERIOD OF JANUARY 1st TO JULY 15th SHALL BE GUARANTEED UNTIL JULY 15th THE FOLLOWING YEAR. PLANTS ACCEPTED DURING THE PERIOD OF JULY 15th TO DECEMBER 31st SHALL BE GUARANTEED FOR ONE YEAR FROM THE DATE OF ACCEPTANCE. THE GUARANTEE PERIODS LISTED ABOVE SHALL APPLY TO ALL "NURSERY GROWN" PLANTS.
14. AT THE TIME OF FINAL INSPECTION ALL PLANTS SHALL BE IN A HEALTHY, VIGOROUS GROWING CONDITION, PLANTED IN FULL ACCORDANCE WITH DRAWINGS AND CONDITIONS.
15. SITE PLAN INFORMATION AS PER SALTER PILON ARCHITECTURE.
16. ENGINEERING AS PER WSP, AND IS PROVIDED FOR INFORMATION ONLY.
17. SITE LIGHTING BY OTHERS



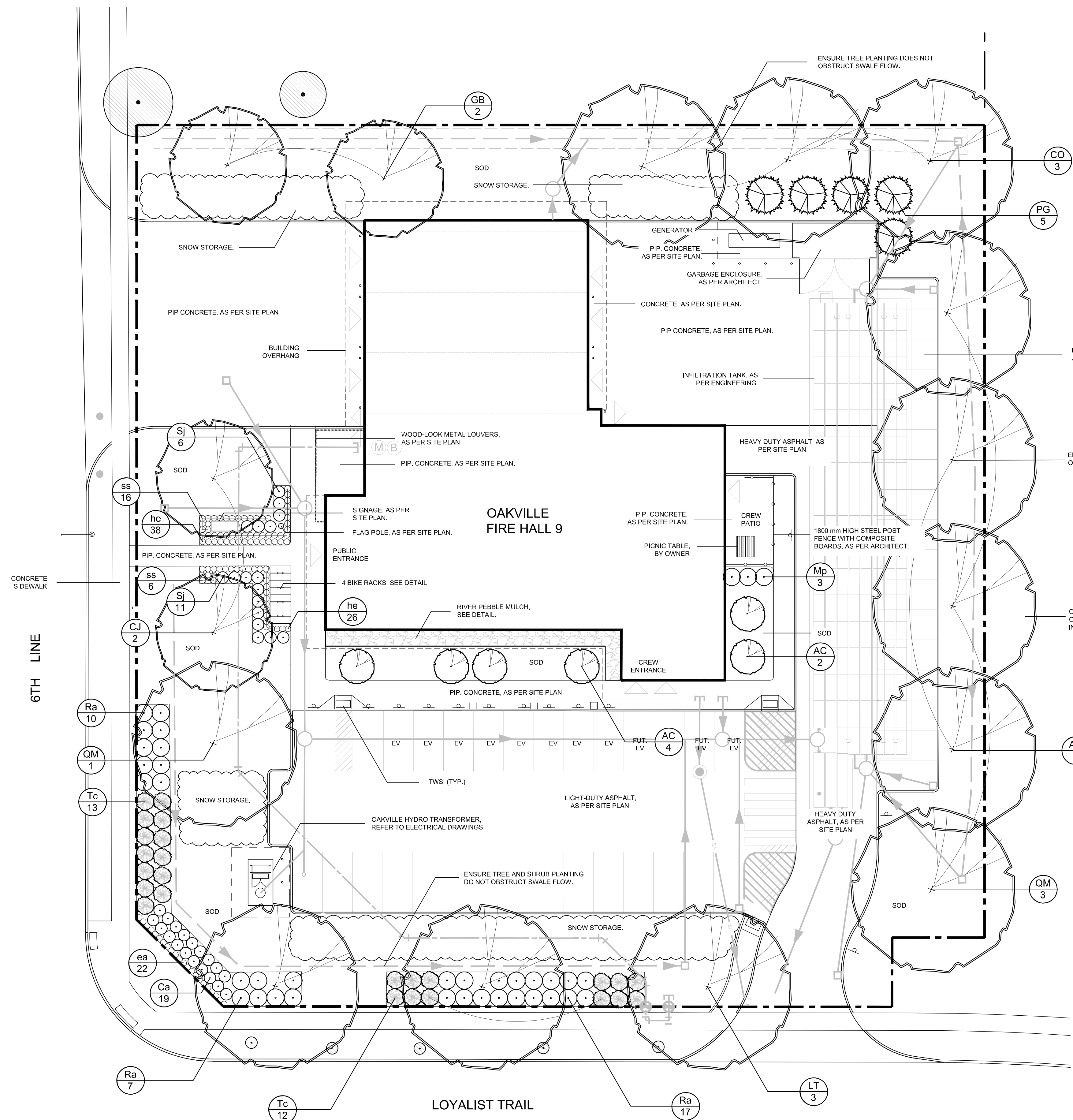
no.	date	description	by
1.	Jul.18.24	Issued for Approval	EH
2.	Aug.09.24	90% Contract Documents	JC
3.	Aug.26.24	Issued for Approval	JC
4.	Sep.13.24	90% Contract Documents	JC
5.	Sep.20.24	Issued for Building Permit	JC
6.	Feb.14.25	Issued for Site Plan Resubmission (v2)	JC

Salter Pilon Architecture
4182 Sixth Line
Oakville

Landscape Plan



PROJECT NO.: 2023-97 DRAWN BY: JC
SCALE: 1:200 DESIGNED BY: JC
SHEET: L2 APPROVED BY: AWH
PLOT DATE: Feb/14/2025

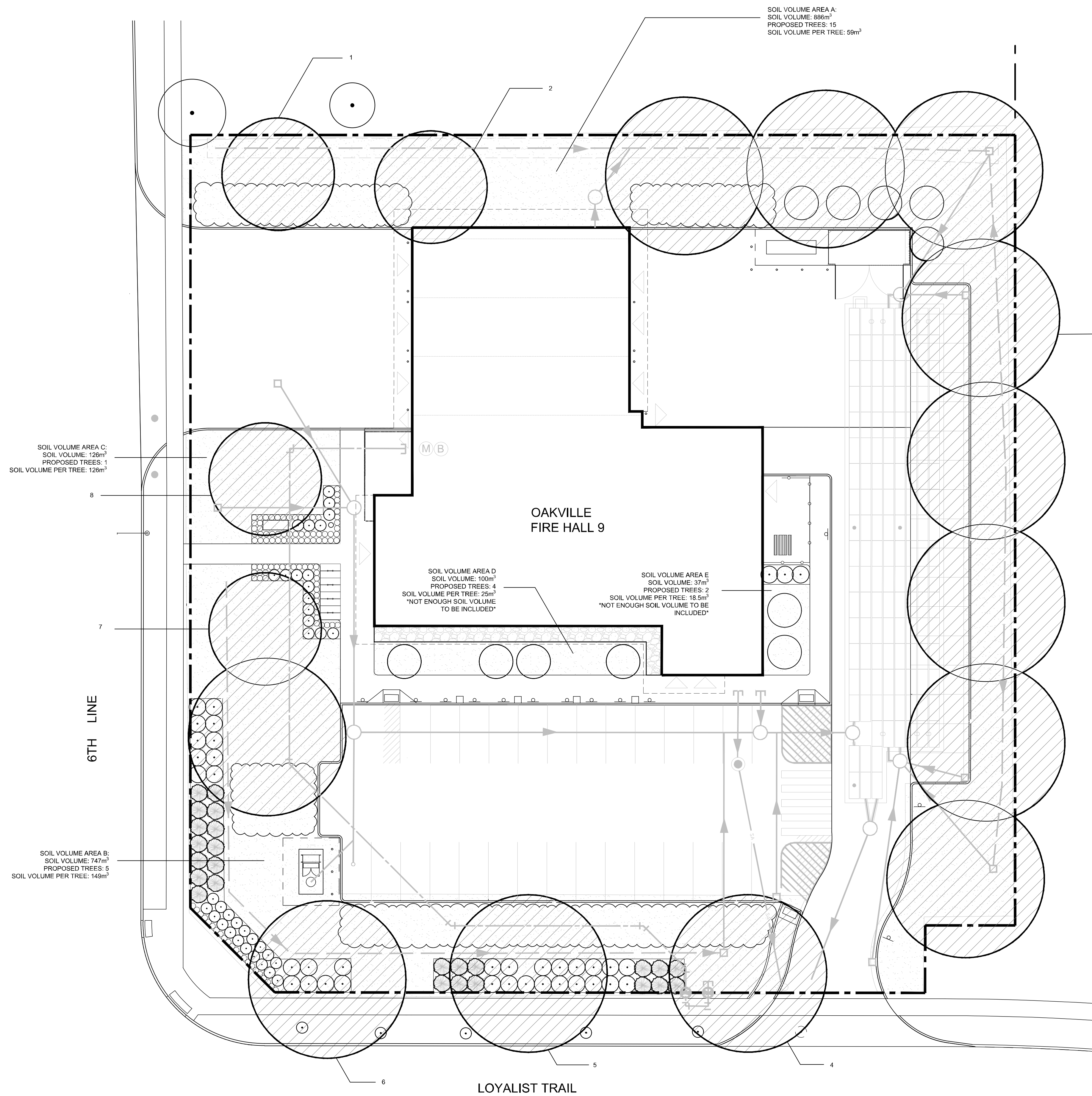


LEGEND

		EXISTING TREES TO REMAIN
		PROPERTY LINE
		PROPOSED TREES

Plant List

KEY	QUANT	BOTANICAL NAME	COMMON NAME	SIZE	COND.
AS	2	Acer saccharum	Sugar Maple	60 mm	W.B.
AC	6	Amenancher canadensis (Tree form)	Serviceberry	50 mm	W.B.
CO	3	Celtis occidentalis	Hackberry	60 mm	W.B.
CJ	2	Cercidiphyllum japonicum	Katsura Tree	60 mm	W.B.
GB	2	Ginkgo biloba	Maidenhair Tree	60 mm	W.B.
LT	3	Liriodendron tulipifera	Tulip Tree	60 mm	W.B.
PG	5	Picea glauca 'Densata'	Black Hills White Spruce	175 cm	W.B.
QM	4	Quercus macrocarpa	Burr Oak	60 mm	W.B.
Ca	10	Coarctatus americanus	New Jersey Tea	3 gal.	Pot
Mp	3	Myrica pensylvanica	Bayberry	3 gal.	Pot
Ra	34	Rhus aromatica	Fragrant Sumac	3 gal.	Pot
Sj	17	Spiraea japonica 'Goldflame'	Goldflame Spiraea	3 gal.	Pot
Tc	25	Taxus cuspidata 'Nana Aurea'	Dwarf Golden Japanese Yew	3 gal.	Pot
ea	39	Echinacea angustifolia	Narrow-leaf Coneflower	1 gal.	Pot
he	64	Hemerocallis 'Stella D'Oro'	Stella D'Oro Daylily	1 gal.	Pot
ss	22	Schizachyrium scoparium	Little Blue Stem	1 gal.	Pot

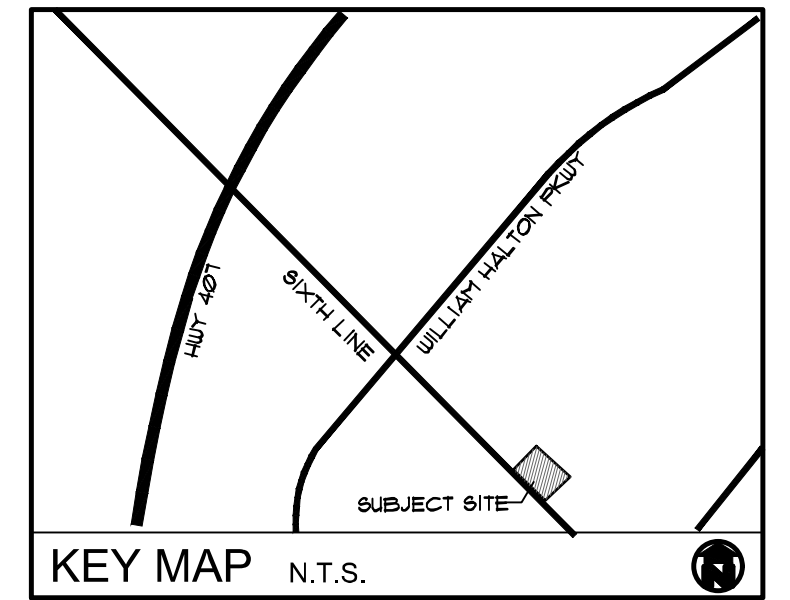


CANOPY CALCULATION CHART

Canopy Key	Tree Quantity	Stature	Soil Volume Area	Soil Volume Provided / tree (m ³)	Canopy Area (m ²)
Proposed Canopy on Site					
1	1	M	A	59	78.5
2	1	M	A	59	78.5
3	13	L - 7 S - 5	A	59	1215
4	1	L	B	149	154
5	1	L	B	149	154
6	1	L	B	149	154
7	2	L - 1 M - 1	B	149	223
8	1	M	C	126	78.5
Proposed Canopy Subtotal:					2135.5
Canopy Coverage Summary					
Proposed Canopy On Site (m²)				2135.5	
Existing Canopy On Site (m²)				0	
Existing Canopy Overlapping Site (m²)				0	
Total Site Area (m²)				5540	
Site Canopy Cover %				39%	
Canopy Cover Target %				25%	
Parking Area Summary					
Total Parking Spaces Proposed:				46	
Total # of Trees within 5m of Parking:				13	

LEGEND

	CANOPY COVERAGE AREA
	TREE CANOPY AREA NOT COUNTED
	TREE SOIL VOLUME AREA



GENERAL NOTES

- ALL WORKMANSHIP WILL BE TO THE STANDARDS OF LANDSCAPE ONTARIO.
- ALL PLANT MATERIAL TO BE NO.1 GRADE NURSERY GROWN IN ACCORDANCE WITH THE CANADIAN STANDARDS FOR NURSERY STOCK, 8TH EDITION, 2017, BY THE CANADIAN NURSERY TRADES ASSOCIATION.
- BACKFILL WILL CONSIST OF SOIL NATIVE TO THE SITE OR GENERAL SOIL TYPE/CLASS NATIVE TO THE SITE. TOPSOIL TO BE TESTED FOR NUTRIENT VALUE, AND AMENDED FOR OPTIMAL GROWTH AS PER THE RECOMMENDATIONS OF THE SOIL TEST.
- CONTRACTOR SHALL MAINTAIN ALL LANDSCAPE AREAS UNTIL OWNER'S ACCEPTANCE OF PROJECT.
- CONTRACTOR TO LOCATE ALL UNDERGROUND UTILITIES.
- PLANTING MAY BE ADJUSTED TO SUIT LOCATIONS OF SITE UTILITY STRUCTURES/SERVICES.
- ALL MATERIALS MUST BE APPROVED BY LANDSCAPE ARCHITECT PRIOR TO INSTALLATION.
- SPREAD MULCH TO A MINIMUM OF 100mm COMPACTED DEPTH ON ALL TREE PITS AND PLANTING BEDS.
- CHECK AND VERIFY ALL DIMENSIONS AND QUANTITIES PRIOR TO COMMENCEMENT OF WORK. ANY DISCREPANCIES ARE TO BE REPORTED IN WRITING TO THE LANDSCAPE ARCHITECT. QUANTITIES NOTED WITHIN THE PLAN SUPERCEDE THOSE IN THE PLANT LIST. ANY SUBSTITUTIONS SHALL BE APPROVED BY THE LANDSCAPE ARCHITECT.
- SOD AS MARKED WITH NURSERY SOD ON A MINIMUM OF 100mm OF CLEAN TOPSOIL. FINE GRADE AND SOD ALL BOULEVARD AREAS TO MUNICIPAL SPECIFICATIONS AND REPAIR DAMAGE TO ADJACENT PROPERTIES, AS REQUIRED.
- FINAL INSPECTION AND ACCEPTANCE OF PLANTING WORK SHALL COINCIDE WITH THE FINAL INSPECTION AND ACCEPTANCE OF ALL WORK INCLUDED IN THE CONTRACT.
- ALL SEEDED SLOPES 3:1 AND GREATER TO RECEIVE EROSION CONTROL MATTING. PIN SOD ON ALL SLOPES OF 3:1 OR GREATER.
- SUBMIT A WRITTEN GUARANTEE TO THE EFFECT THAT ALL PLANTS ACCEPTED DURING THE PERIOD OF JANUARY 1st TO JULY 15th SHALL BE GUARANTEED UNTIL JULY 15th THE FOLLOWING YEAR. PLANTS ACCEPTED DURING THE PERIOD OF JULY 15th TO DECEMBER 31st SHALL BE GUARANTEED FOR ONE YEAR FROM THE DATE OF ACCEPTANCE. THE GUARANTEE PERIODS LISTED ABOVE SHALL APPLY TO ALL "NURSERY GROWN" PLANTS.
- AT THE TIME OF FINAL INSPECTION ALL PLANTS SHALL BE IN A HEALTHY, VIGOROUS GROWING CONDITION, PLANTED IN FULL ACCORDANCE WITH DRAWINGS AND CONDITIONS.
- SITE PLAN INFORMATION AS PER SALTER PILON ARCHITECTURE.
- ENGINEERING AS PER WSP, AND IS PROVIDED FOR INFORMATION ONLY.
- SITE LIGHTING BY OTHERS



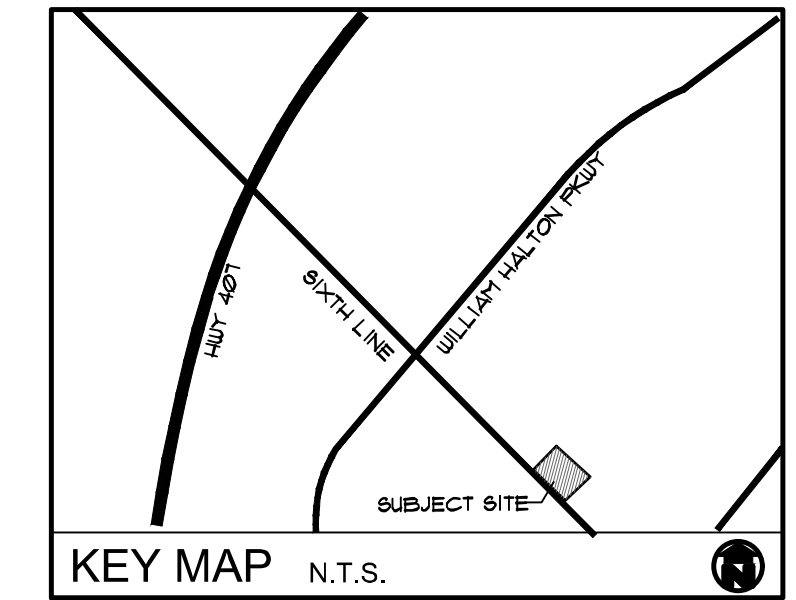
no.	date	description	by
1.	Jul.18.24	Issued for Approval	EH
2.	Aug.09.24	90% Contract Documents	JC
3.	Aug.26.24	Issued for Approval	JC
4.	Sep.13.24	90% Contract Documents	JC
5.	Sep.20.24	Issued for Bulking Permit	JC
6.	Feb.14.25	Issued for Site Plan Resubmission (v2)	JC

Salter Pilon Architecture
4182 Sixth Line
Oakville

Canopy Cover Plan



PROJECT NO.: 2023-97 DRAWN BY: JC
SCALE: 1:200 DESIGNED BY: JC
SHEET: L3 APPROVED BY: AWH
PLOT DATE: Feb/14/2025



GENERAL NOTES

PROJECT NO.: 2023-97 DRAWN BY: JC
 SCALE: DESIGNED BY: JC
 SHEET: APPROVED BY: AWH
L4 PLOT DATE: Feb/14/2025

REVISIONS

no.	date	description	by
1.	Jul.18.24	Issued for Approval	EH
2.	Aug.09.24	90% Contract Documents	JC
3.	Aug.26.24	Issued for Approval	JC
4.	Sep.13.24	90% Contract Documents	JC
5.	Sep.20.24	Issued for Bulking Permit	JC
6.	Feb.14.25	Issued for Site Plan Resubmission (v2)	JC

Salter Pilon Architecture
 4182 Sixth Line
 Oakville

Details



MEMBER

ASSOCIATION OF LANDSCAPE ARCHITECTS

PARSONS HILL

MEMBER

ASSOCIATION OF LANDSCAPE ARCHITECTS

MEMBER

ASSOCIATION OF LANDSCAPE ARCHITECTS

MEMBER

ASSOCIATION OF LANDSCAPE ARCHITECTS

MEMBER

ASSOCIATION OF LANDSCAPE ARCHITECTS

MEMBER

ASSOCIATION OF LANDSCAPE ARCHITECTS

MEMBER

ASSOCIATION OF LANDSCAPE ARCHITECTS

MEMBER

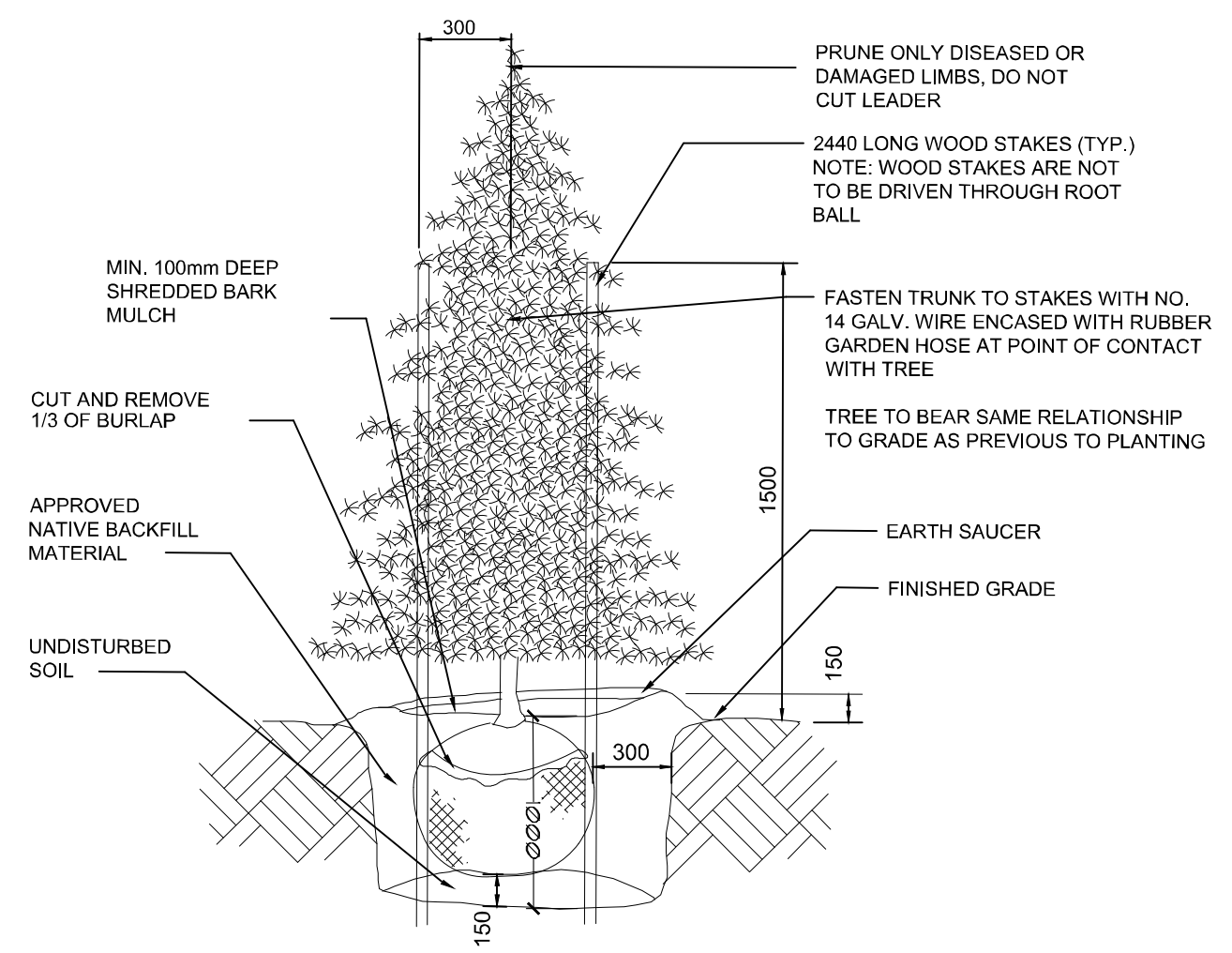
ASSOCIATION OF LANDSCAPE ARCHITECTS

MEMBER

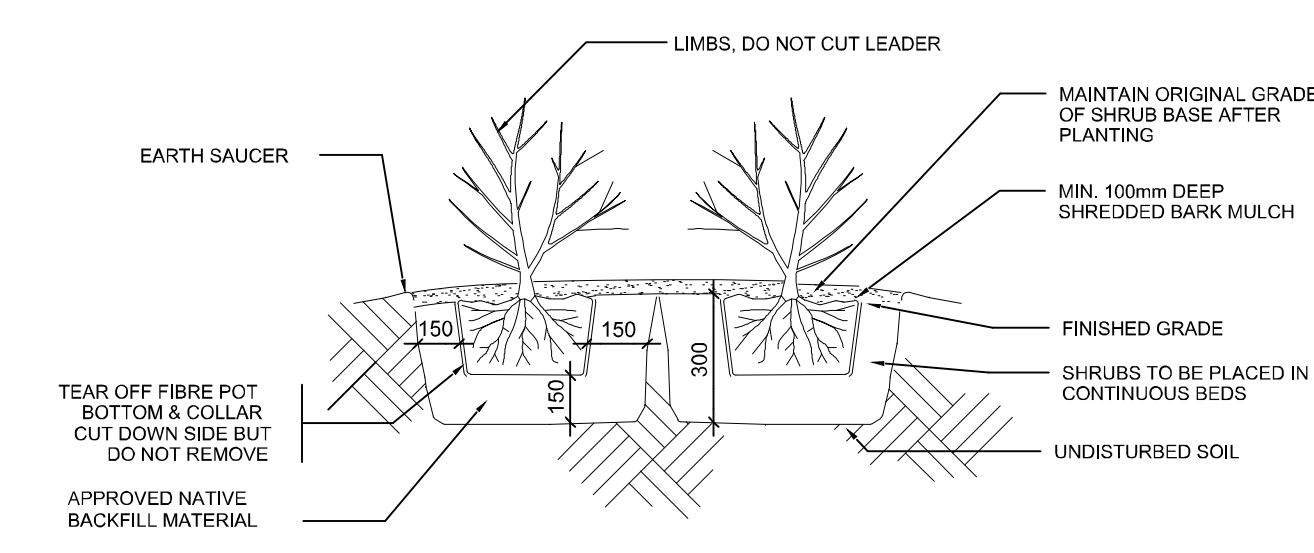
ASSOCIATION OF LANDSCAPE ARCHITECTS

MEMBER

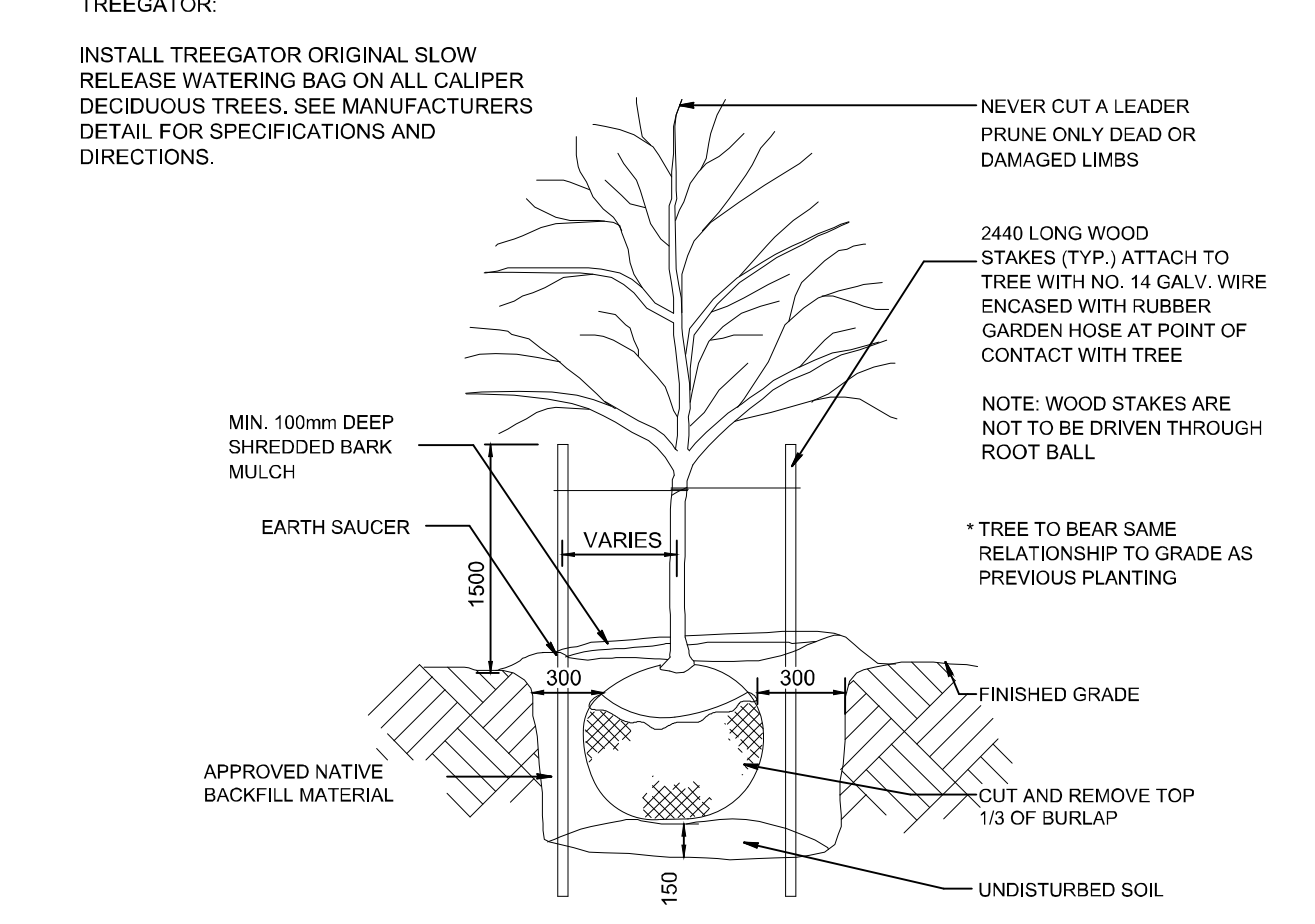
ASSOCIATION OF LANDSCAPE ARCHITECTS



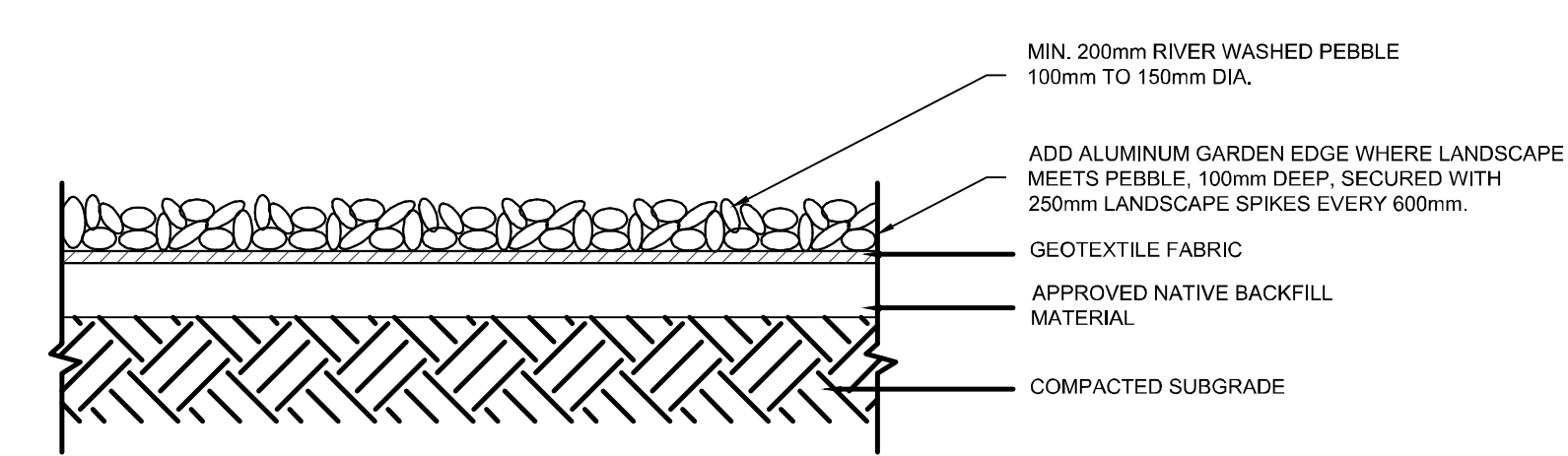
3 CONIFEROUS TREE PLANTING DETAIL
 NTS



2 SHRUB PLANTING DETAIL
 NTS



1 DECIDUOUS TREE PLANTING DETAIL
 NTS



5 RIVER PEBBLE MULCH DETAIL
 NTS

BIKE RACK BY MAGLIN (OR APPROVED EQUAL)
 T 1-800-716-5506
 F 1-877-260-5393
 WWW.MAGLIN.COM
 SALES@MAGLIN.COM

SPECIFICATIONS:
 MODEL: MBR-0500-00003
 POWDER COAT COLOUR: GUNMETAL,
 FROM FINE TEXTURED COLLECTION (MATTE FINISH)
 OPTIONS: SURFACE MOUNT
 INSTALL AS PER MANUFACTURERS SPECIFICATIONS

500 SERIES

MBR-0500-00003
 Legacy #MBR500-S

Sustainability Facts

Unit Size	One (1) MBR-0500-00003 Bike Rack
Carbon footprint (GWP)	103 kg CO ₂ -Eq
Total energy use (PRE)	1770 MJ-Eq
Water use (WUP)	0.843 m ³ water
Material recyclability	100%

LEED v4.1 Credits

Type III Environmental Product Declaration

Material Inventory

Low VOC Isocyanate

Free of Red List Substances

DESCRIPTION: 500 Series - 500 Bike Rack: H.S. Steel Tube, Surface Mount, 2 Bike Configuration

FINISH: All steel components are protected with E-Coat rust proofing. The Maglin Powdercoat System provides a durable finish on all metal surfaces.

INSTALLATION: The bike rack is delivered pre-assembled. It is available with either a surface mount or direct burial installation option.

TO SPECIFY: Select MBR-0500-00003
 Choose:
 - Powdercoat Color

HEIGHT: 35" (88.9cm) LENGTH: 19.25" (48.9cm) WEIGHT: 13.27 lbs (6.0kg)

MAGLIN Site Furniture

T 800 716 5506
 F 877 260 5393
 www.maglin.com
 sales@maglin.com

All drawings, specifications, design and details on this page remain the property of Maglin Site Furniture Inc. and may not be used without Maglin's authorization.
 Details and specifications may vary due to continuing improvements of our products.

4 BIKE RACK DETAIL
 NTS

F:\AUTO_OPEN\Drawings\XXXX\XXXX.dwg